



# GS1 Spain: Adding value to our members

Barcelona, 4th April 2006

José María Bonmatí – CEO GS1 Spain

The global language of business

[www.gs1.org](http://www.gs1.org)



## GS1 Spain Mission

**MISSION:** Support our members to increase efficiency in the relationship between supplier and retailers, identifying improvement opportunities in the supply chain management to provide added value to the final consumer.

Non-for-profit organization that work with its members.

Multisectorial approach. More than 22.000 members:  
FMCG, Healthcare, DIY, Textile, Sport, ...

Service oriented organization

Active participation of the member companies through Committees and working groups.

Skilled and efficient staff, with a clear quality-oriented culture.

Organization with a lot of dynamism and innovation. We are in a constant research of new products and services opportunities for our members.

Efficient use of resources within all the activities

Quality is an intrinsic constant for all the people who make up the company.

## Role of GS1 Spain

GS1 Spain provides full GS1 implementation support to our member companies

- Allocation of GS1 Company Prefixes
- Make available GS1 specifications and Implementation Guidelines
- Provide technical support & services on GS1 implementations
- Represent the interests of our members with relevant national bodies and across GS1 International

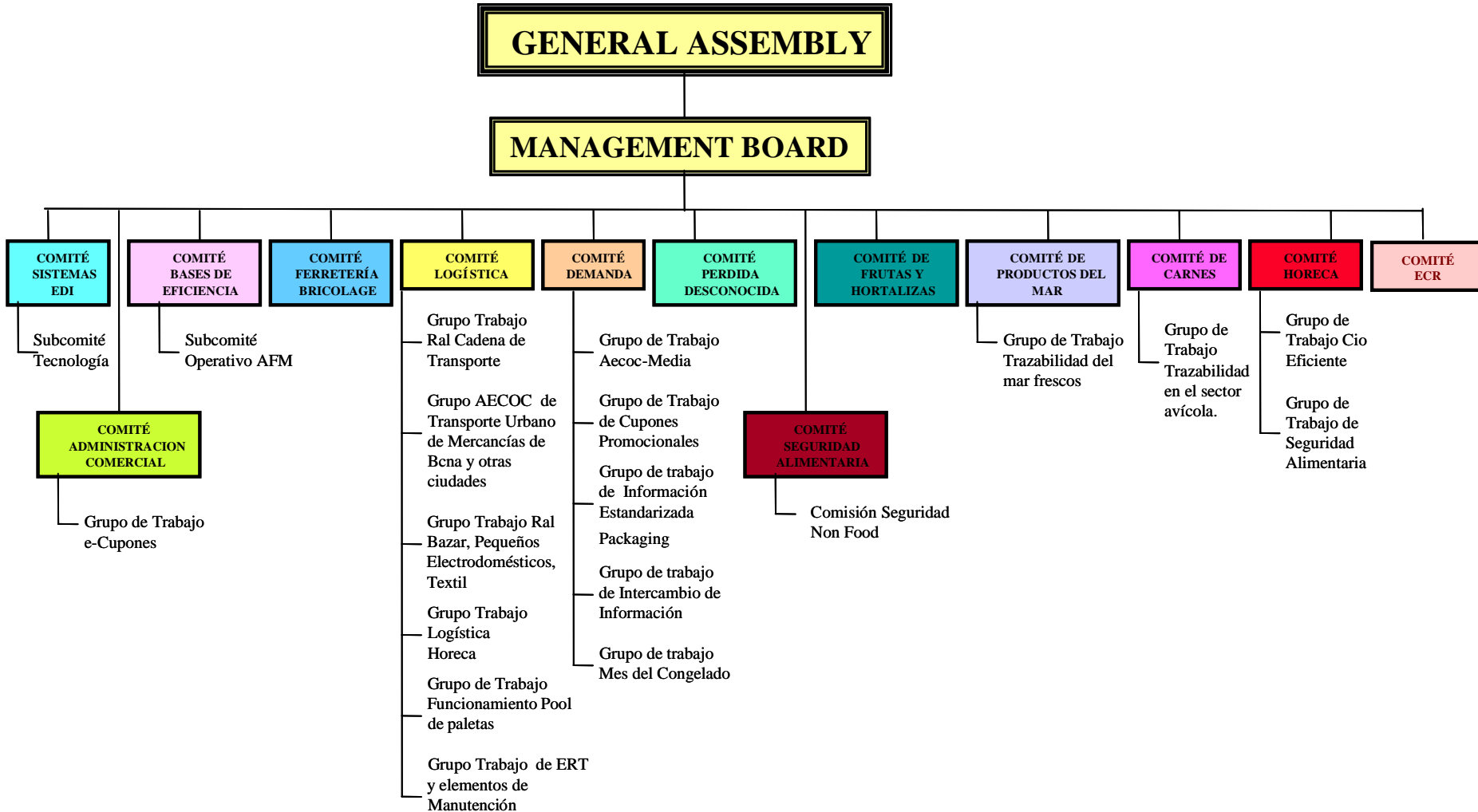
### Work close to GS1 Spain Members in:

- **Implementation of GS1 standards**
  - All national GS1 standards should conform with international GS1 specifications. No divergences and no development of national standards is key for success.
  - Accurate translations of international specifications
  - Ensure that our members implement the standards correctly
- **Technical support and training to member companies**
  - Provide the technical competence to inform & train our members about the standards
  - Provide technical support and services linked to the implementation of GS1 Standard
- **Represent the interests and maintain the support of users & potential users of GS1 standards within our territory**

# Standards Development Rules

- GS1 to lead the Standards development to provide truly Global Standards -> prevent divergences in implementations.
- GSMP to reduce time of response to a requirement and decrease Time-To-Market. A business need needs to be addressed in a reasonable period of time.
- A local business need may be global tomorrow. Local needs have to be addressed by GSMP.
- No more national Standards to be developed. GS1 Spain to bring its members experience into the process to contribute to create Global Standards.

# Working close to users...



More than 600 persons working in GS1 Spain Groups

*Barcelona, Building the Standards Architecture Together*

## Suppliers

CAMPOFRÍO  
SARA LEE  
GRUPO SIRO  
NESTLÉ  
DANONE  
KRAFT FOOD IBERIA  
NUTREXPA  
GRUPO SOS  
COCA COLA

## Retailers

DÍA  
EROSKI  
EL CORTE INGLES  
EUROMADI  
IFA  
TOYS “R” US  
CAPRABO  
ALCAMPO  
MERCADONA



# GS1 Spain Traceability Project

The global language of business

[www.gs1.org](http://www.gs1.org)

GS1 Spain traceability project based on:

- STANDARDS
- EXPERTISE AND CONSULTING
- PARTNERSHIP
- TRAINING

- **GS1 Spain has launched a new line of services to provide expertise and consulting to fill the gap between business analysis and technology implementation.**
- **GS1 Spain consulting services is a key step during the execution of a traceability project:**
  - **Legal assessment**
  - **Business requirements analysis**
  - **Professional Standards advise**
  - **GS1-128 and GS1 eCom quality check service**

- **GS1 Spain is working actively and closely with main consulting and technical companies in Spain.**
- **Traceability Partners constitute a true milestone to provide expert technical advice and implement traceability projects in our member associates.**
- **Traceability Partners guarantee the compliance of their solutions and implementations with GS1 standards.**



# GS1 Spain activities in the Healthcare Sector

The global language of business

[www.gs1.org](http://www.gs1.org)

## GS1 SPAIN – HEALTHCARE MEMBERSHIP FIGURES

**Number of members:** **579**

Laboratories & Wholesalers: 388

Medical Devices Supplier: 161

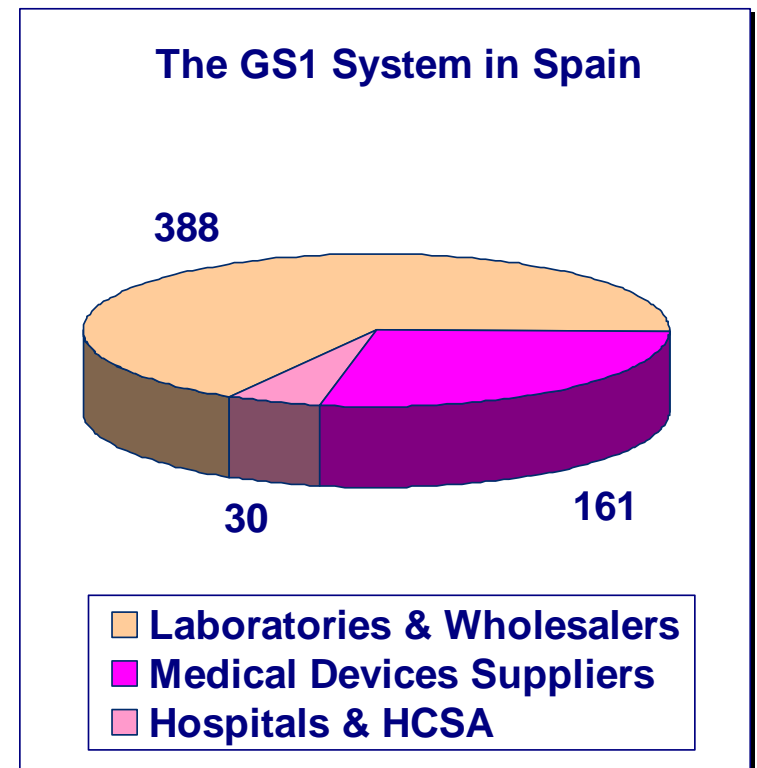
Hospitals & H.C.S. Areas: 30

**EDI users:** **250**

ORDERS, DESADV, INVOIC

**GS1-128 users:**

**100**





**17 Spanish Healthcare Service Areas**

**7 Healthcare Services are promoting and using GS1 Standards**

## Implementation of GS1 Standards

- GS1 Barcodes: GTIN and GS1-128
- GS1 eCom

## Traceability

- Prostheses
- Vaccines

## Patient Safety

## Master Data Alignment



Spain

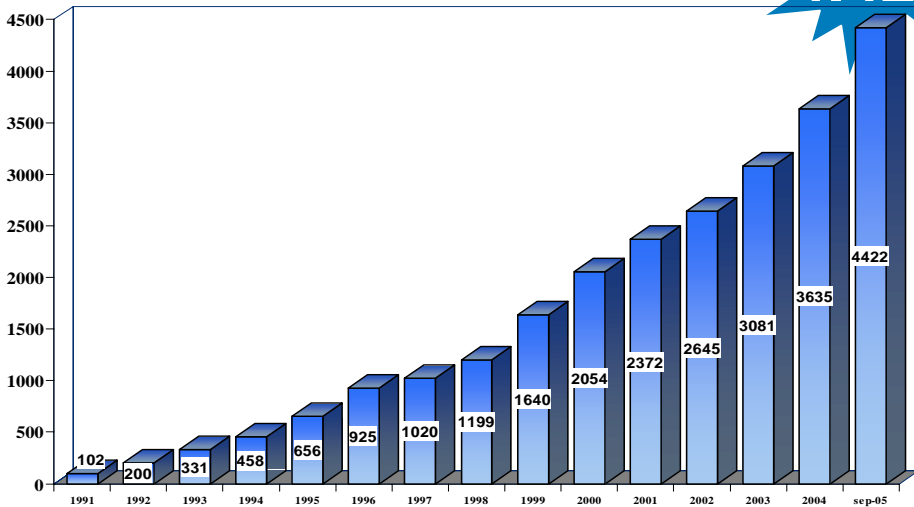
# Paperless Invoice

The global language of business

[www.gs1.org](http://www.gs1.org)

## Number of EDI Users

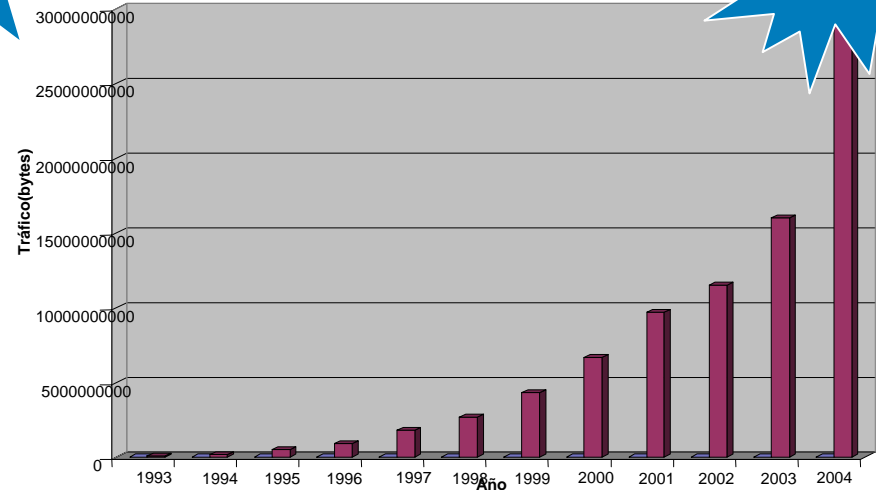
**4.422**



Source: VANs

## EDI Traffic/month

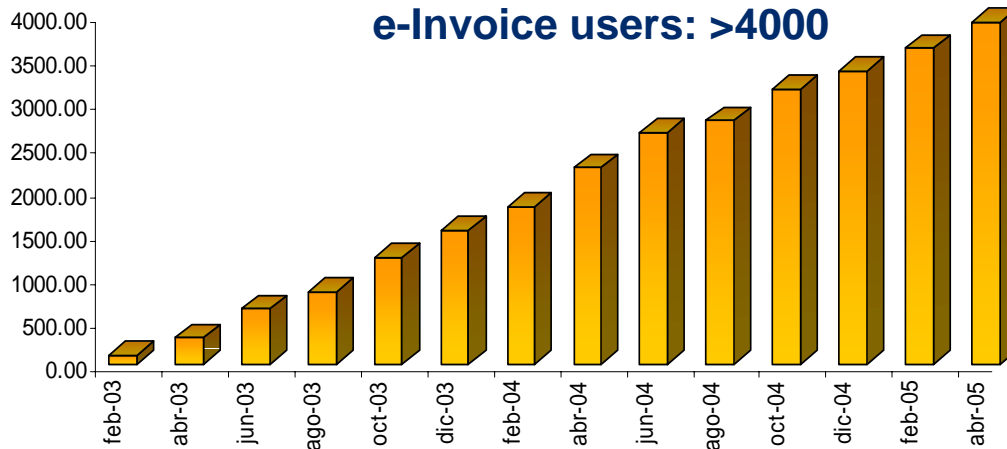
**29GB**



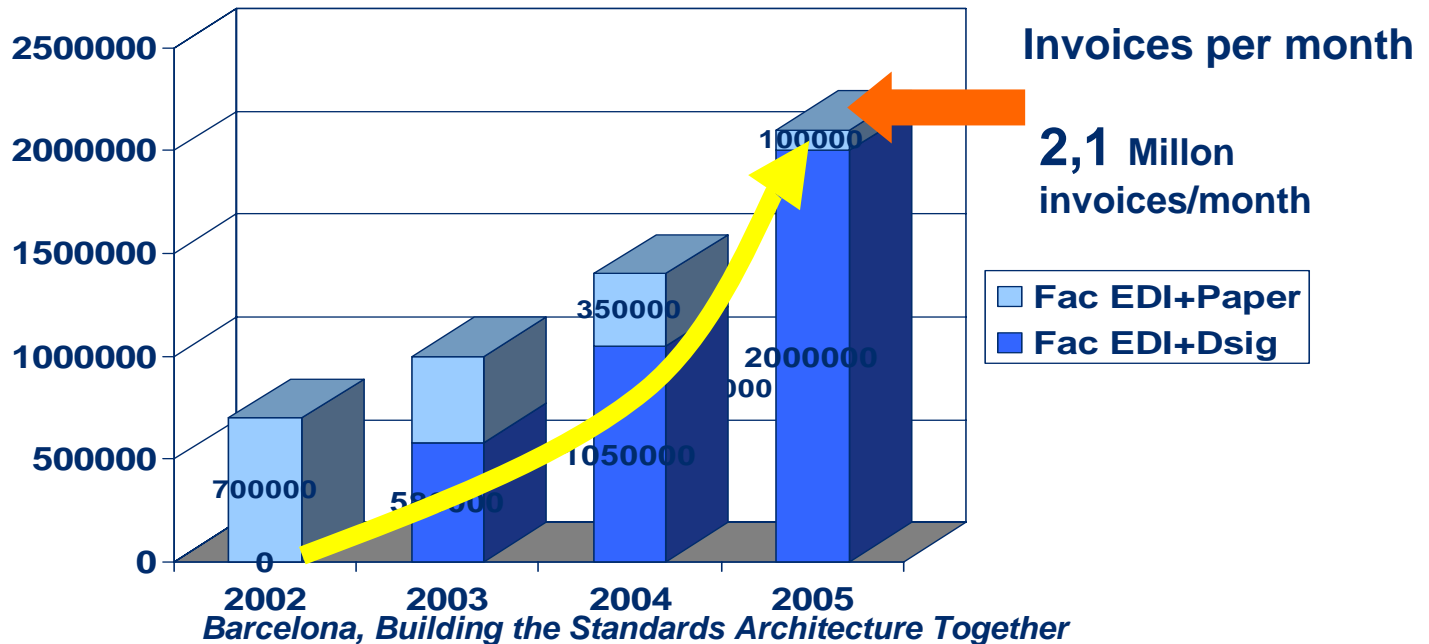
Source: VANs

**More than 4400 EDI Users**  
**>80% of traffic exchanged over the Internet**  
**More than 10.000.000 documents exchanged per month**

# E-Invoice



Fuentes:  
EDICOM  
SERES España



Spanish legislation approved on February 2003, based on digital signature.

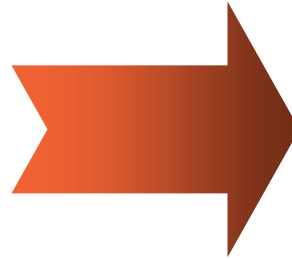
- Very active role of GS1 Spain lobbying and working together with the Tax Authority

Very active role in working together with facilitators

- Definition of the Standard for Invoice and Digital Signature (EANCOM&XML)
- Establish a “validation” process for Software and Networks

Communication effort to our Members to promote the use of Digital Signatures in INVOICES.

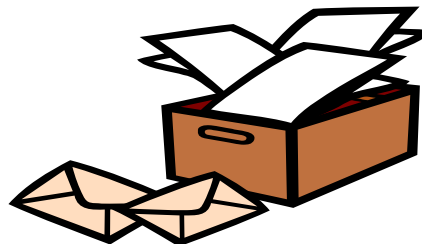
Benefits and Saving for companies are enormous



**3 €/invoice**  
**72 M €/year**  
**savings in the**  
**sector**



**15 Km**  
**Archives**



**>3000 jobs**  
**with more value**



*Barcelona, Building the Standards Architecture Together*



Spain



# EPC COMPETENCE CENTRE

The global language of business

[www.gs1.org](http://www.gs1.org)

**The aim of EPC CC initiative is to support Spanish companies to implement EPC in their business processes.**

EPC CC should be able to provide all the necessary services to cover the needs raised in each phase of EPC Technology implementation.

- **Research**
- **Development**
- **Test**
- **Pilots**
- **Deployment**

# EPC COMPETENCE CENTRE



Different kinds of boxes that are conveyed by the conveyor pass through a portal in which antennas have been installed. The conveyor has been designed in such a way that the antennas and the reader can be easily changed. This way, different combinations of technical solutions can be tested. The speed of the conveyor is variable, achieving 660ft/min.

Contact us if you are interested to see it during GSMP Week



## Contact details

José M Bonmatí, CEO GS1 Spain

Ronda General Mitre, 10

08017 - Barcelona

T. +34 932 523 900

F. +34 932 802 135

E. [jmbonmati@gs1es.org](mailto:jmbonmati@gs1es.org)

The global language of business

[www.gs1.org](http://www.gs1.org)