

PCN #	PCN Name	Effective Date
08-004	Traceability Business Requirement Group (BRG)	14-Nov-2008

Purpose:

Create a Traceability BRG from the current Traceability Work Group to process on-going continuous improvement to GS1 traceability standards including the Global Traceability Standard (GTS) and Global Traceability Conformance Programme (GTCP).

Rationale:

There has been a business demand to update the GTS for implementation reasons. Currently there is no standing group to facilitate these changes.

Background:

The GTS describes the specifications and structures of traceability involved in supply chain processes. It aims to be the generic, foundational standard for traceability in ANY industry sector. However, being based on the Fast Moving Consumer Goods (FMCG) sector, the current GTS is not generic enough. Any items in the GTS that are sector specific should be removed to ensure it is truly generic.

It was identified by GS1 Healthcare (CR 08-000130 and 08-000201) and included on their Roadmap that a standard for Traceability in Healthcare was required. GTS was reviewed by GS1 Healthcare Global Traceability Work Team, and the work team provided documents which constitute recommendations for changes to the GTS to make it truly generic.

The GTCP has been developed and is actually in piloting step. This programme is a set of checklists to fulfill the global traceability standard within the supply chain. It has been designed in order to implement and review the Traceability Systems in manufacturing organisations, producers/handlers and providers of product supplies and services to the chain.

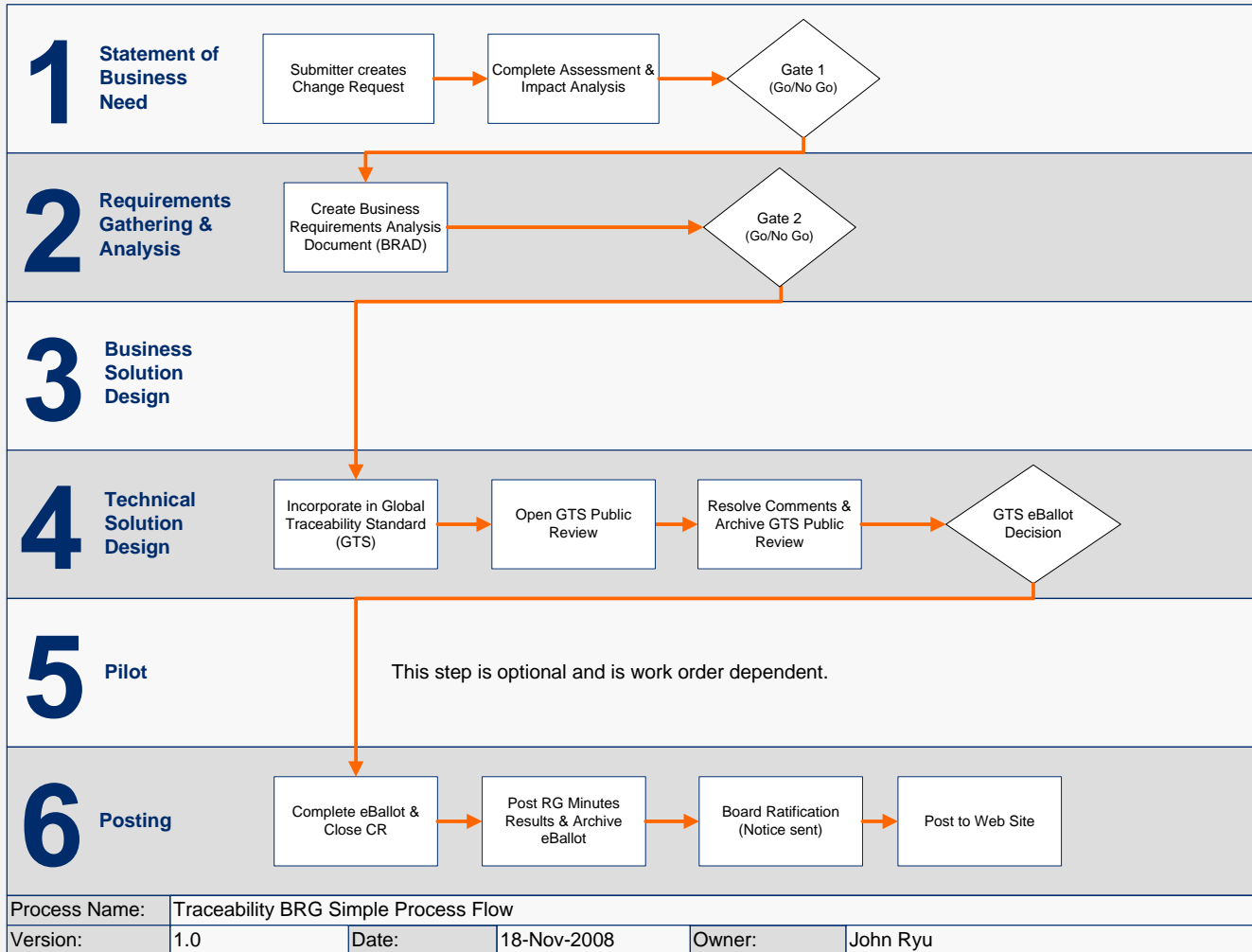
Traceability BRG Mission Statement

The Traceability BRG mission is to maintain the GTS and to develop the GTCP

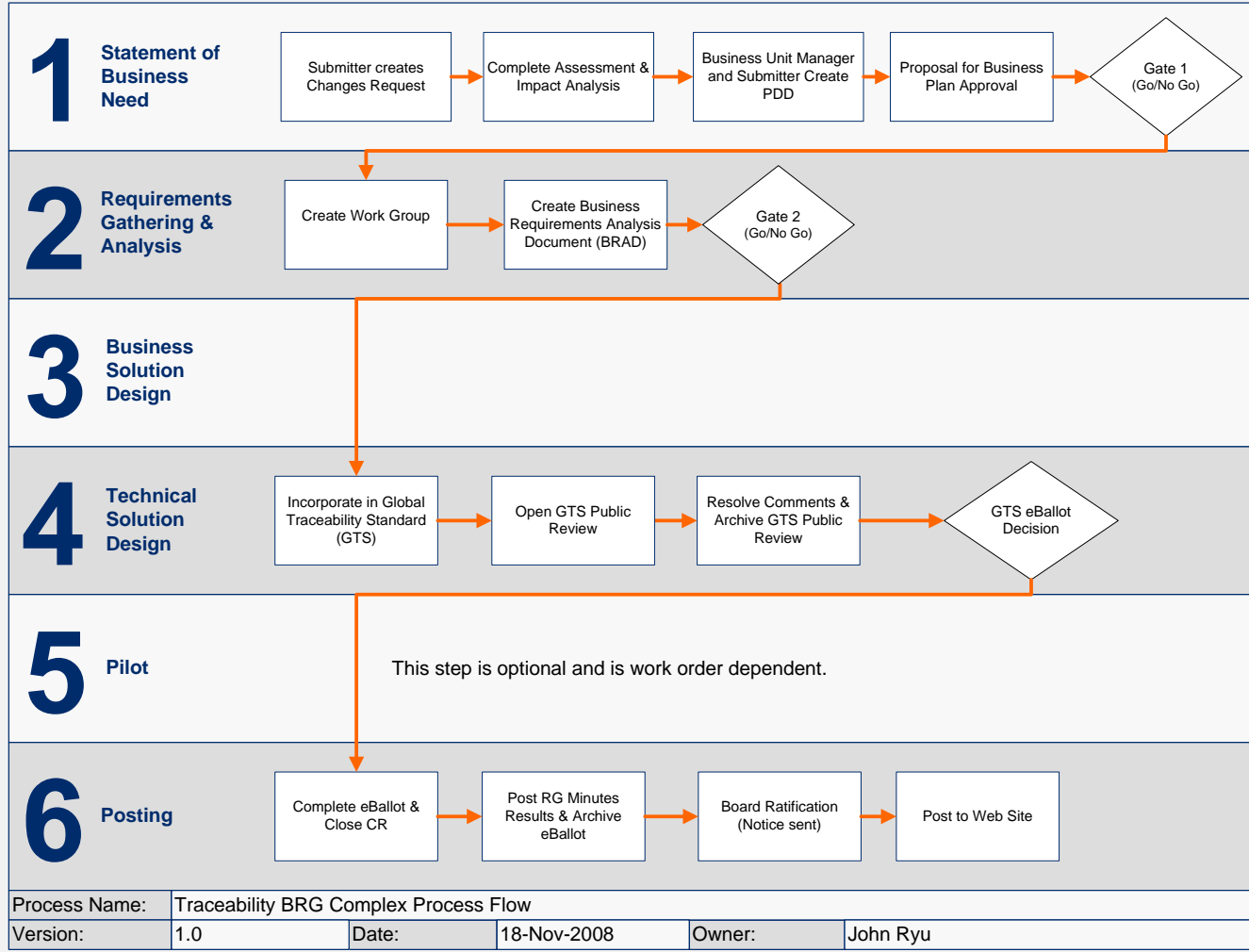
The Traceability BRG provides the following:

- Forum for processing Simple Work Orders as defined in the GSMP User Manual
- A pool of subject matter experts to provide chairs & members for any work groups formed to process complex traceability work orders
- Forum for discussing guidelines for implementation of Traceability related standards.
- Swift development/enhancement of the processes that support GTS.
- Forum to discuss for the development of GTCP
- Will test solutions as part of the process towards creating standards, including feedback from the pilots to update/improve the draft standards, as a result, a close cooperation with GS1 Solutions Department.
- The GS1 Solution Department liaises with the Traceability BRG to provide direction and counsel.

Traceability BRG: Simple Process Flow



Traceability BRG: Complex Process Flow



Criteria for Simple Work Order classification

- Maintenance update to GTS
- Work effort generally completed in less than 120 days

Criteria for Complex Work Order Classification

- Development of new functionality as opposed to maintenance to existing standard.
- Application to a new sector or technology
- Development of GTCP
- Work effort is expected not to be completed within 120 days (generally completed in less than 260 days)

Impact/ Next Steps

- Approval from the Process Group to create the Traceability BRG
- Creation of a Traceability BRG community room
- Draft a process flow for the GTS BRG and incorporate in GSMP User Manual
- Finalize Traceability BRG Mission Statement
- Community Announcement and CTA (BRG contact john.ryu@gs1.org)
- Obtain co-chairs