



**Quarterly GSMP Management Report**  
**April – June 2007**

## Overview

The GSMP Management Report was created to give a high level overview of the state of GSMP and recent outcomes. This issue covers the period of April – June 2007. The Process continues to grow into the new model (post '06 re-structuring).

## Highlights of the Quarter

Following are the key GSMP highlights of April – June 2007:

HIGHLIGHT	IMPACT
GDSN Package Measurement Rules - New Issue Released!	GDSN Package Measurement Rules has been updated to include the following new package measurement rules: <ul style="list-style-type: none"> <li>■ Personal, Decorative, and Sporting Goods Variable Measure Products</li> <li>■ Building Materials and Nursery Stock</li> </ul>
GDSN Trade Item Implementation Guide - New Issue Released!	GDSN Trade Item Implementation Guide: the <u>definitive source</u> on how to implement GDSN data has been updated to include the following new guidelines: <ul style="list-style-type: none"> <li>■ Variable Measure Products (Non-Food)</li> <li>■ Metric and Imperial Measurements</li> <li>■ Net Weight</li> <li>■ Country of Origin</li> </ul>
UN/CEFACT Recognizes GS1 Conformance Project	GSMP takes global leadership in the UN/CEFACT determination of conformation to UN/CEFACT standards
GSMP Event Achieves 97% Satisfaction	The global standards event continues to meet expectations of attendees and 98% say they will return.
eCom BRG Swiftly Supports GS1 Australia to best UBL in Healthcare	Due to the swift turnaround of GS1 Australia's requirements into the GS1 invoice message, the Australian healthcare now ranks GS1 XML ahead of UBL.
GDSN Roadmap Enabled by GSMP for Next Release	GSMP delivers the first maintenance release on time and in accordance with the GDSN roadmap, supporting industries like entertainment, food and beverage, hardlines, etc.
GSMP Bears Fruit for the Healthcare Industry	The first GS1 Healthcare work group approves Healthcare GTIN Allocation Rules.

## Work Status

### CR's/SOW activity from April – June 2007

#### Closed CR's: April – June 2007

Total Number	Approved	Closed based on complex rules	Withdrawn by Submitter
76	61	3	12

73 New CR's were submitted to the GSMP processing this quarter.

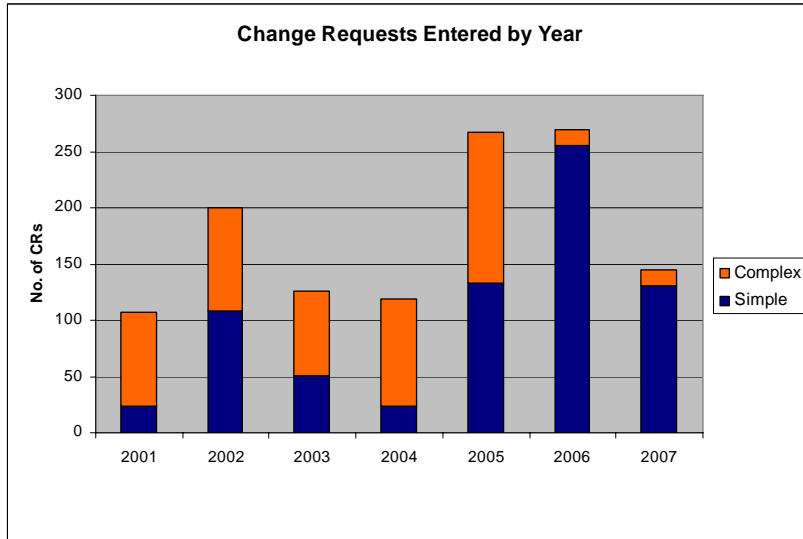
85 CR's remain open as of June 30, 2007 in the following status:

CR Number	Type	Submitter	Status
06-000224	GDSN BRG	GS1	Work Queue
06-000254	Upstream2EANCOM WG	GS1	Work Queue
07-000018	GDSN BRG	1SYNC	Work Queue
07-000042	GPC BRG	Ahold	Work Queue
07-000047	BarCodes & Identification BRG	GS1	Public Review
07-000050	GDSN BRG	GS1	Work Queue
07-000067	GPC BRG	Best Buy Co, Inc	Work Queue
07-000073	GPC BRG	Ahold	Work Queue
07-000077	eCom BRG	GS1 Nederland	Work Queue
07-000078	GPC BRG	Ahold	Work Queue
07-000079	GPC BRG	Ahold	Work Queue
07-000098	eCom BRG	GS1 Nederland	Work Queue
07-000103	eCom BRG	GS1 Nederland	Work Queue
07-000132	GPC BRG	Ahold	Work Queue
07-000135	GDSN BRG	GS1 UK	Work Queue
07-000136	GDSN BRG	GS1 UK	Work Queue
07-000137	GDSN BRG	GS1 UK	Work Queue
07-000138	GDSN BRG	GS1 UK	Work Queue
07-000139	GDSN BRG	GS1 UK	Work Queue
07-000140	GDSN BRG	GS1 UK	Work Queue
07-000141	GDSN BRG	GS1 UK	Work Queue
07-000142	GDSN BRG	GS1 UK	Work Queue
07-000143	GPC BRG	Hasbro, Inc	Work Queue
07-000146	GDSN BRG	GS1	Work Queue

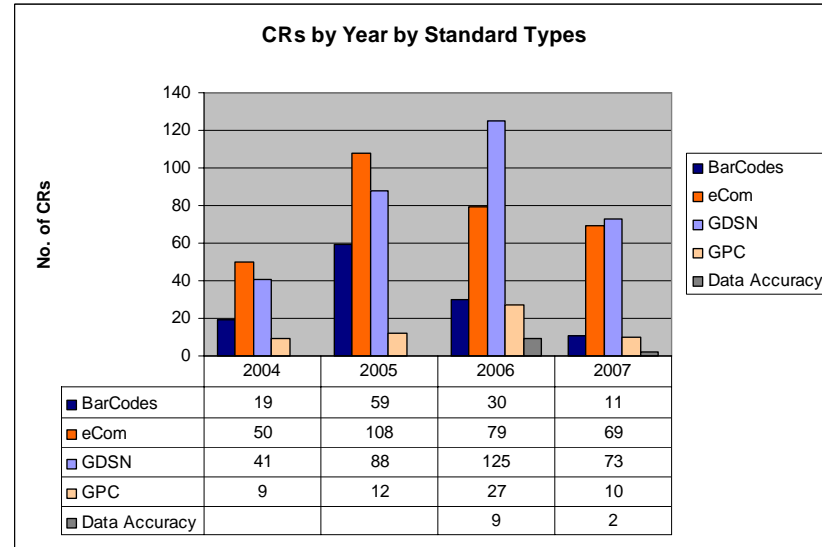
CR Number	Type	Submitter	Status
07-000151	GDSN BRG	GS1 UK	Work Queue
07-000152	GDSN	GS1 UK	Work Queue
07-000153	GDSN BRG	GS1 UK	Work Queue
07-000157	Global Product Classification Team	Hasbro, Inc	Work Queue
07-000159	Global Product Classification (GPC)	Ahold	Work Queue
07-000166	GDSN	General Mills	Work Queue
07-000169	GDSN	PepsiCo	Work Queue
07-000171	GDSN BRG	GS1 on behalf of Agentrics	Work Queue
07-000174	GDSN BRG	Agentrics	Work Queue
07-000175	GDSN BRG	Agentrics	Work Queue
07-000181	GDSN BRG	Agentrics	Work Queue
07-000182	GDSN BRG	Agentrics	Work Queue
07-000186	GDSN BRG	UDEX	Work Queue
07-000187	GDSN BRG	GS1	Work Queue
07-000188	eCom BRG	SINFOS GmbH	eBallot
07-000189	GDSN BRG	Agentrics	Work Queue
07-000196	GDSN BRG	1SYNC	Work Queue
07-000197	GDSN BRG	GS1	Work Queue
07-000198	Barcodes and ID	GS1 Germany	Work queue
07-000200	Data Accuracy WG	Kimberly-Clark	Public Review
07-000204	GDSN BRG	GS1 France	Work Queue
07-000207	EANCOM Team	GS1 Germany	eBallot
07-000208	EANCOM Team	GS1 Germany	eBallot
07-000214	GDSN	GMA/FPA	Work Queue
07-000215	EANCOM Team	GS1 UK	eBallot
07-000219	GDSN BRG	1Sync	Work Queue
07-000221	GDSN BRG	Gladson Interactive	Work Queue
07-000222	eCom BRG	GS1 UK	Brad & BSD
07-000223	GDSN BRG	GXS	Work Queue
07-000224	GDSN	GS1	Work Queue
07-000225	GDSN BRG	Gladson Interactive	Work Queue
07-000226	GDSN	1SYNC	Work Queue
07-000228	GDSN BRG	GS1 Nederland	Work Queue
07-000232	Barcodes and ID	GS1	Work Queue
07-000233	GDSN BRG	P&G	Work Queue

CR Number	Type	Submitter	Status
07-000234	Global Product Classification (GPC)	Hasbro, Inc	Work Queue
07-000237	GDSN BRG	PepsiCo	Work Queue
07-000238	GDSN BRG	1SYNC	Work Queue
07-000239	GDSN BRG	1SYNC	Work Queue
07-000240	GDSN BRG	1SYNC	Work Queue
07-000241	GDSN BRG	1SYNC	Work Queue
07-000242	GDSN BRG	PepsiCo	Work Queue
07-000243	eCom	GS1 Global Office	Work Queue
07-000244	eCom	Accenture Supply Chain Services	Work Queue
07-000246	eCom	GS1 France	Work Queue
07-000247	eCom	GS1 France	Work Queue
07-000248	eCom	GS1 France	Work Queue
07-000249	eCom	GS1 France	Work Queue
07-000250	eCom	GS1 France	Work Queue
07-000251	eCom	GS1 France	Work Queue
07-000252	eCom	GS1 France	Work Queue
07-000253	eCom	GS1 France	Work Queue
07-000254	eCom	GS1 France	Work Queue
07-000255	eCom	GS1 France	Work Queue
07-000256	eCom	GS1 France	Work Queue
07-000257	eCom	GS1 France	Work Queue
07-000258	eCom	GS1 France	Work Queue
07-000259	eCom	GS1 France	Work Queue
07-000261	eCom	GS1 France	Work Queue
07-000262	Data Accuracy	Hampton Affiliates	Work Queue
07-000263	GDSN BRG	Agentrics	Work Queue

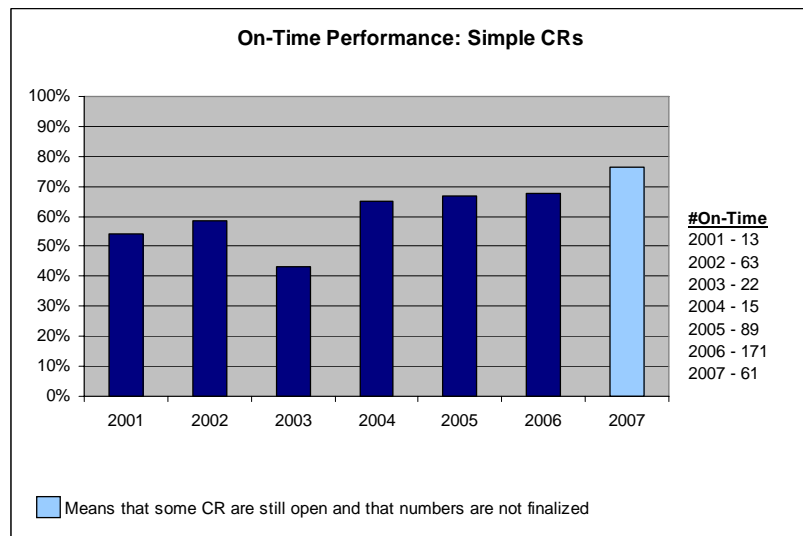
**Chart 1:**



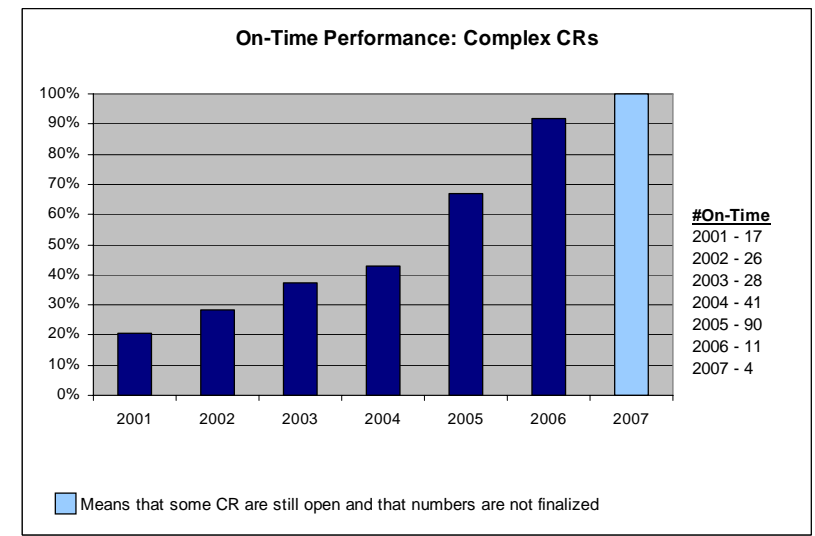
**Chart 2:**



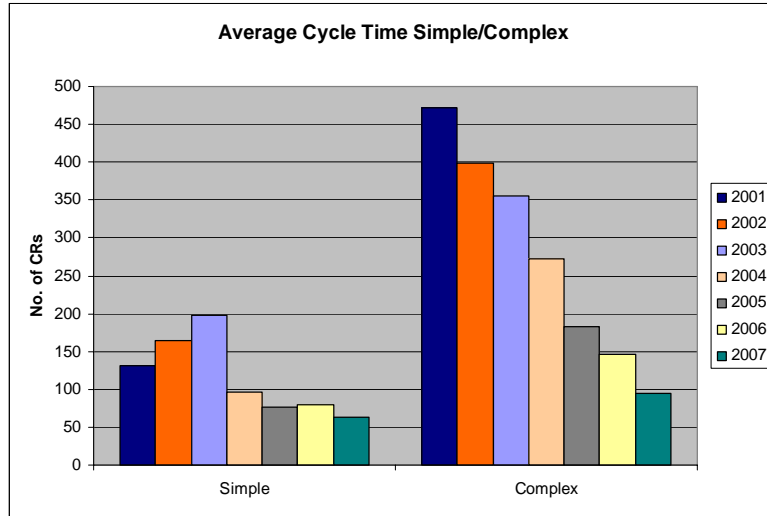
**Chart 3:**



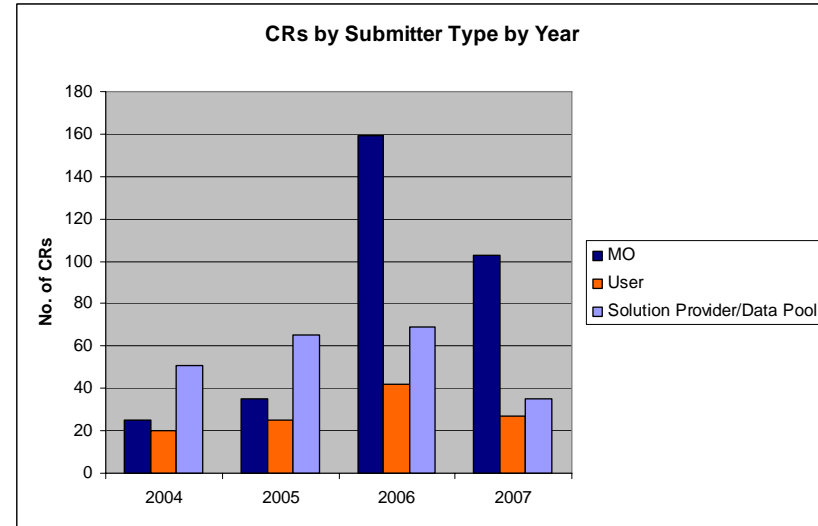
**Chart 4:**



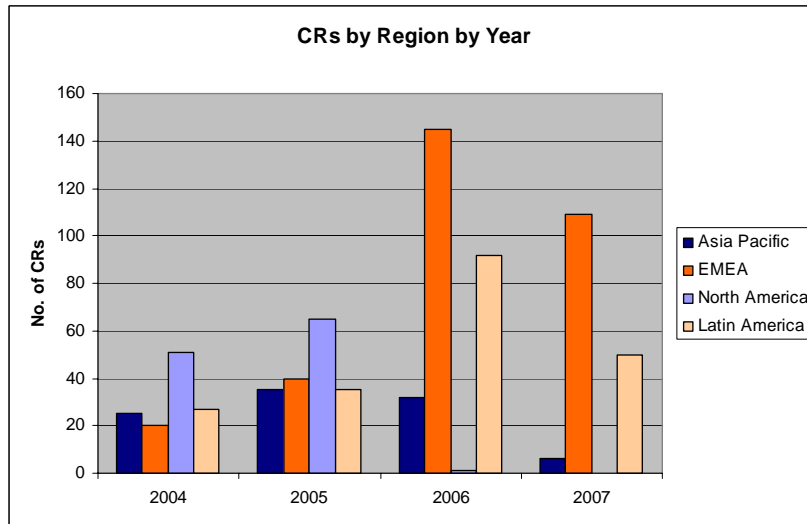
**Chart 5:**



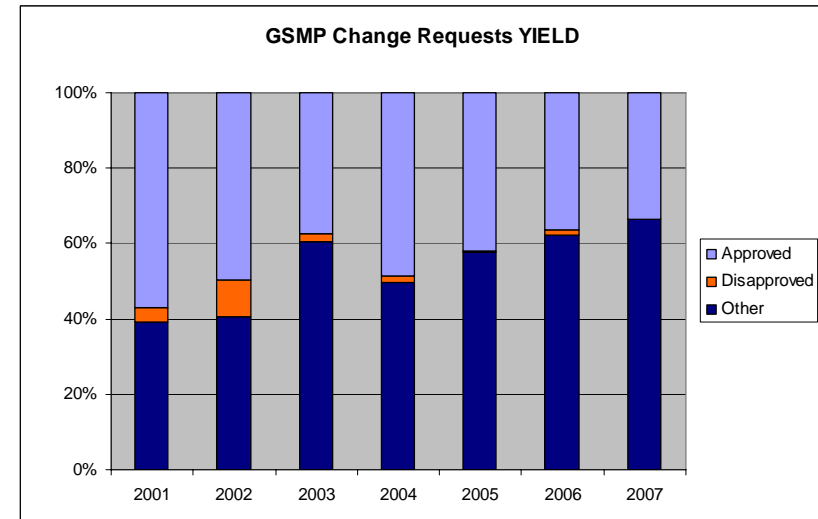
**Chart 6:**



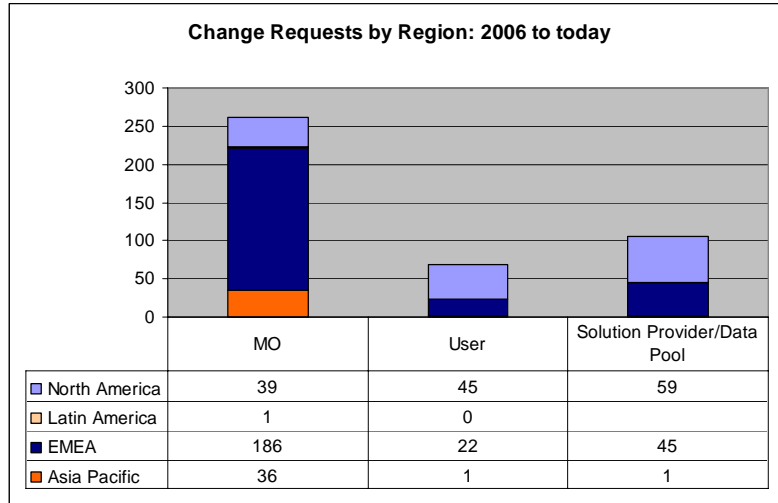
**Chart 7:**



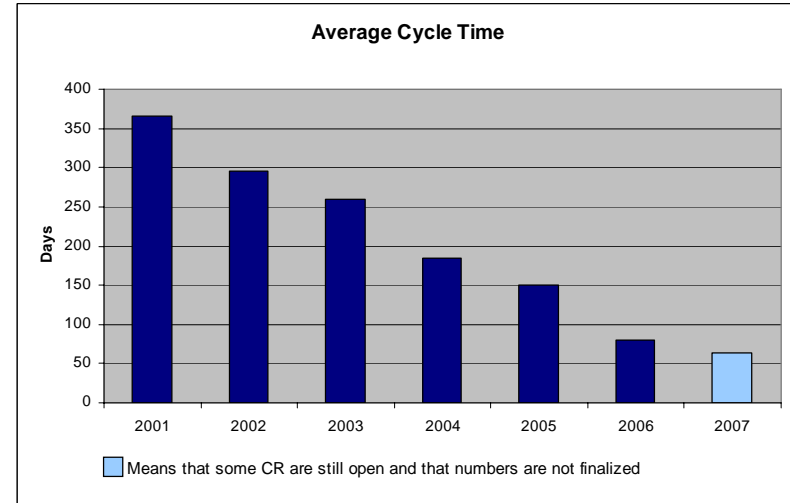
**Chart 8:**



**Chart 9:**



**Chart 10:**



**Chart 11:**

