



# Training & Education Update



Welcome to this update of face-to-face and distance learning courses taking place in the coming months.

Your suggestions for improvement are always welcome, just send me an email at [michalinka.buczek@gs1.org](mailto:michalinka.buczek@gs1.org).

**“It is impossible for a man to learn what he thinks he already knows.”**

**Epictetus**

## In this issue:

[GS1 Identification Keys and Bar Codes Workshop](#)

[SPECIAL: GS1 Data \(Bar + Matrix\) Reloaded!](#)

[Introduction to GS1 Healthcare](#)

[XML Basics & Advanced](#)

[Basics of EANCOM](#)

[Supply Chain Management](#)

[GS1 Data \(Bar + Matrix\) Reloaded](#)

[NEW/Webinar: DataMatrix in Action!](#)

[NEW/Webinar: eCom Implementation Survey 2009](#)

[NEW/Webinar: Webinar: What's new in the GS1 GenSpecs \(2010\) Release](#)

[NEW: Webinars scheduled for 2010](#)

**We remind you that all the courses are free for GS1 Staff Members!**





# “GS1 Identification Keys and Bar Codes Workshop”

## About This Training

The course "GS1 Identification Keys and Bar Codes" is modular. Individual topics can be added (or removed) according to the need.

**The following list provides a summary of the main content areas:**

- GS1 Identification Keys  
Global Trade Item Numbers, Global Location Numbers, Serial Shipping Container Codes
- Bar Code Symbolologies
- Bar Code Verification
- Variable Measure Trade Items
- The GS1 Application Identifiers
- The GS1 Logistics Label
- Introduction to the Bar Codes training materials

## Target Audience

GS1 MO Staff with **zero to 18 months experience.**

With this solid foundation, students should be able to access additional information with greater ease.

## Your Trainer



**David Buckley**  
Director GS1 MO Support

## When & Where?

**In GS1 Global Office**  
326, avenue Louise  
1050 Brussels

**02 – 03 February 2010**

**Recommended:**  
Also attend on 4<sup>th</sup> of February:  
**GS1 Data (Bar + Matrix) Reloaded**

**Registration via LEARN**  
**Course limited to 20 students**





# “Special: GS1 Data (Bar + Matrix ) Reloaded”

## About This Training

**This course has been condensed in 1 day**

For the convenience of the students, this course has been scheduled in a way **to be easily combined with the “GS1 Identification Keys and Bar Codes Workshop” delivered the days before.**

### • TOPICS IN A NUTSHELL

- Encoding & Decoding Advance Level Symbology
- Why do your customers need these symbologies
- Retailer Readiness Update
- Symbol Structures and Application Areas

GS1 DataMatrix & GS1 DataBar



## Target Audience

It is designed for technical staff of GS1 Member Organizations with the GS1 Identification Keys knowledge.

At the end of the training, the students will have an understanding of symbol specification of GS1 DataBar and GS1 DataMatrix.

## Your Trainer



**Lutfi Ilteris Oney**  
Technical Support Manager

## When & Where?

**In GS1 Global Office**  
326, avenue Louise  
1050 Brussels

**04 February 2010 (1 day)**

**Recommended to follow previous days training!**

GS1 Identification Keys and Bar Codes Workshop on  
**02 – 03 February 2010**

**Registration via LEARN**  
**Course limited to 20 students**





# “Introduction to GS1 in Healthcare”

## About This Training

### This training will cover:

- Specific requirements of the healthcare supply chain and the regulatory worldmap
- Detailed training on the new standards in AIDC, GDSN and Traceability
- GS1 identification keys and data carriers for the healthcare sector: What is needed for which product?
- GTIN Allocation Rules for Healthcare
- GS1 Healthcare activities: user group, local programs, marketing activities

**The intention is to make it informative and practical !**  
(Interactive group discussions)

## Target Audience

Are you just involved or will you be involved in healthcare activities in your country?

Do you want to learn more about what makes healthcare special?

This training is for **YOU!**

## The Trainer



**Ulrike Kreysa**  
GS1 Global Office, Healthcare Director

## When & Where?

**In GS1 Global Office**  
326, avenue Louise  
1050 Brussels

**18 – 19 February 2010**

**Registration via LEARN**  
**Course limited to 30 students**



# “XML Basics & Advanced”

## About This Training

The training is both theoretical and practical.

It is a mixture of presentations and hands-on exercises. The training session is concluded with a practical workshop.

### The objectives are:

- Create a common understanding of the theoretical and practical issues involving XML used for the EDI
- Establish awareness and provide hands-on experience of GS1 standards related to XML syntax
- Create basic understanding of GS1 e-business messaging architecture
- Provide hands-on practice of software tools related to XML

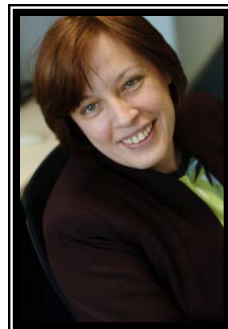
## Target Audience

**Come in Brussels for 4 most interactive days if:**

- You have a technical profile
- You are interested in XML standards

You will get a basic understanding of the technology that forms currently the mainstream of the new EDI development .

## Your Trainer



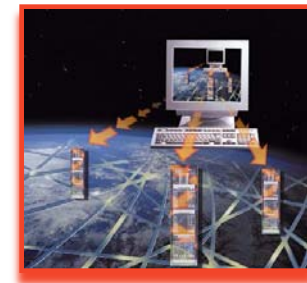
**Ewa Iwicka**  
EDI Customer Service Manager

## When & Where?

**In GS1 Global Office**  
326, avenue Louise  
1050 Brussels

**01– 04 March 2010**  
+  
**14 – 17 June 2010**

**Registration via LEARN**  
**Course limited to 20 students**



# “Basics of EANCOM”

## About this Training

In this training you learn the basic concepts of Electronic Data Interchange (EDI) and the EANCOM®.

The theoretical presentations are followed by practical exercises.

### If you want to:

- Get an understanding of the technology that is currently most widely used in the EDI and within GS1 MO's community
- Learn to use the documentation related to EANCOM®
- Feel confident in submitting EANCOM® change requests and understand the standardization process

**This training is for you!**

## Target audience

- Technical staff of GS1 MO's
- Responsible for EDI principles and EANCOM® standards within their users' community.

### **IMPORTANT:**

You have to follow the eLearning course “Basics of EANCOM®”, as prerequisite to the classroom training.

## Your Trainer



**Jean-Luc Champion**  
eCom Process Manager

## When & Where?

**In GS1 Global Office**  
326, avenue Louise  
1050 Brussels

**10 – 11 May 2010**

**Registration via LEARN**  
Course limited to 20 students





# “Supply Chain Management”

## About This Training

### The course is composed of 3 modules:

- Introduction to SCM
- Logistics
- Information Technology in SCM

Those modules will help you to look at the SC, what it represents, and to highlight the challenges and opportunities linked to SC.

### The objectives:

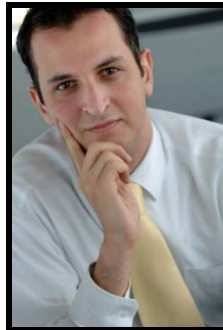
- Refresh your knowledge on the science of SCM.
- Learn you how to apply this knowledge in your respective markets.
- Give an understanding on what are the daily issues that User Members face in managing their Supply Chain's business processes

## Target Audience

### This training is particularly relevant to:

- New MO's staff recruits
- Participants seeking to 'refresh' their SCM knowledge.

## Your Trainer



**Lutfi Ilteris Oney**  
Technical Support Manager

## When & Where?

### **In GS1 Global Office**

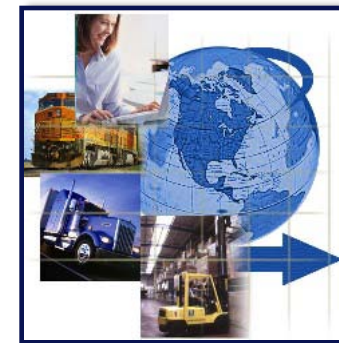
326, avenue Louise  
1050 Brussels

**17 May 2010**

**+**

**11 October 2010**

**Registration via LEARN**  
**Course limited to 20 students**





# “GS1 Data (Bar + Matrix ) Reloaded”

## About this Training

### This is a 2 days course:

- First day is for GS1 **DataMatrix**
- Second day is reserved for **GS1 DataBar**

### Topics in a Nutshell:

- Encoding & Decoding
- Advance Level Symbology
- Why do your customers need these symbologies
- Retailer Readiness Update
- Symbol Structures and Application Areas

## Target Audience

Technical Staff of GS1 MOs with the GS1 Identification Keys knowledge.

Students will have an expert understanding of symbol specification of GS1 DataBar and GS1 DataMatrix.

## When & Where?

**In GS1 Global Office**  
326, avenue Louise  
1050 Brussels

**12 – 13 October 2010**

**Registration via LEARN**  
Course limited to 20 students

## Your Trainer



**Lutfi Ilteris Oney**  
Technical Support Manager





# “Webinar: GS1 DataMatrix in Action!”

## About This Webinar

---

**The topics that will be covered are the following:**

**By Raman Chhima, GS1 NZ:**

1. How GS1 NZ members are using GS1 DataMatrix for shipping Health products into Turkey?
2. What about the rumor from GS1 Singapore concerning a royalty fee for the usage of DataMatrix?
3. Q&A time on DataMatrix raised in New Zealand

**By Marc Benhaim, GS1 France:**

1. The Technical Aspects of GS1 DataMatrix

**By Ilteris Oney, GS1 GO:**

1. How to create a GS1 DataMatrix and “Human Readable”?

## Target Audience

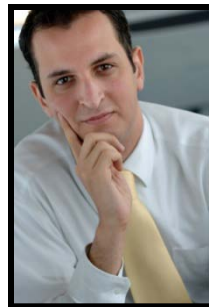
---

This webinar is dedicated to **GS1 staff members and users!**

**Reserve your Webinar seat now:**  
<https://www2.gotomeeting.com/register/440148450>

## Your trainers

---



**Ilteris Oney**  
Technical Support Manager



**Raman Chhima,**  
Technical Consultant



**Marc Benhaim,**  
Mobile Commerce Manager

## When

---

**Date:** 15th of December 2009

**Time:** 13:00 pm, GMT+8

(10:30 New Delhi, 13:00 Beijing, Taipei, Singapore, Hong Kong, 16:00 Sydney, 18:00 Wellington)

**Remark:** For the exact hour matching your time offset, please refer to the registration page

# “Webinar: eCom Implementation Survey 2009”

## About This Webinar

---

**The eCom Implementation survey is about to be launched for the fifth time in the next few days.**

Over last years the survey has become a very important tool for various stakeholders.

### We will tell more about:

- For who and why it has become important?
- What are the data that we expect to receive?
- How you can estimate the eCom implementation at your market?
- What happen if you cannot provide us with absolute figures?
- How the received results will be used by the Global Office?

## Expectations

---

It is very important that we receive data from as many MO's as possible, based on best possible estimation.

**We count on having a discussion among the participants** about the ways the data can be collected. This could help us to improve the survey outcome.

## When

---

**Date:** 15th of December 2009

**Time:** 11:00 UCT/GMT  
(13:00 Brussels, 07:00 Princeton)

**Remark:** For the exact hour matching your time offset, please refer to the registration page

**Registration link:**

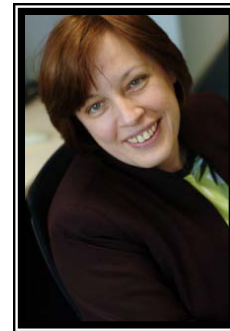
<https://www2.gotomeeting.com/register/228432354>

## Your trainers

---



**Anders Grangard,**  
GS1 eCom Director



**Ewa Iwicka**  
EDI Customer Service Manager



# GS1 “Webinar: What's new in the GS1 GenSpecs (2010) Release”

## About This Webinar

### The Objectives are:

- Provide an update on GS1 General Specifications (January 2010) availability and change summary details
- Provide an overview of major changes to the GS1 General Specifications (January 2010)
- Provide some hints and guidance for updating MO documentation and any translation work

## When

**Date:** 21 January 2010

**2 sessions are scheduled as to fit different time zones**

**Time: 08:00 CET**

Reserve your seat now at:

<https://www2.gotomeeting.com/register/420629530>

**Time: 15:00 CET**

Reserve your seat now at:

<https://www2.gotomeeting.com/register/259163594>

**Remark:** For the exact hour matching your time offset, please refer to the registration page

After registering you will receive a confirmation email containing information about joining the Webinar.

## Your trainers



**David Buckley**  
Director GS1 MO Support



**Andrew Hearn**  
Sr. Director, Global Standards

# “Webinars to be delivered in 2010”

## January

---

**GS1 Canada Product Recall Tool & new eCom message development project**

**By Rita Laur, GS1 Canada**  
12 January 2010

Register by clicking on this link:  
<https://www2.gotomeeting.com/register/317944378>

## November

---

**Collaborative Product Development**

**By A. C. Krid & S. Hervé, GS1 France**  
17 November 2010

Link in the next Training Update

**System requirements for PC-based attendees:** Windows® 2000, XP Home, XP Pro, 2003 Server, Vista

**System requirements for Macintosh®-based attendees:** Mac OS® X 10.4 (Tiger®) or newer

## October

---

**GS1 Netherlands GLN Data Base and its use in eCom implementation**

**By E Peelen, GS1 Netherlands**  
20 October 2010

Link in the next Training Update

**Click on the link for registration!**



**Remark:**

You can also get register on LEARN Homepage !