

# **Business Message Standard (BMS)**

**For**

**Multi Ship to Order**

**BRG: Order**

**Version: 0.10.4**

**Date: 22/04/2005**  
(dd/mm/ccyy)



### Change Request Reference

<b>Refer to Change Request (CR) Number(s):</b>	CR 01-00094, CR 03-000167, CR 04 - 000137 & CR 04 -000138
<b>CR Submitter(s):</b>	BP on behalf of Order BRG MVC on behalf of RB (NAMM)
<b>Date of CR Submission to GSMP:</b>	October 10, 2001 November 11, 2003 July 13, 2004

### Business Requirements Analysis Document (BRAD) Reference

<b>BRD Title: Multi Ship to Order</b>
<b>BRD Date: September 20, 2004</b>
<b>BRD Version: v 0.3.8 A</b>

<b>BRAD Title: Multi Ship to Order</b>
<b>BRAD Date: Mayo 10, 2004</b>
<b>BRAD Version: v 0.3.9</b>

<b>BRAD Title: Enhancements Multi Ship to Order Music Industry</b>
<b>BRAD Date: October 10, 2004</b>
<b>BRAD Version: v 0.0.2</b>

### Document Summary

<b>Document Title:</b>	BSD Multi Ship to Order
<b>Document Version</b>	0.10.3
<b>Owner:</b>	Order BRG
<b>Status:</b>	( <i>Check one box</i> )      DRAFT      x Approved
<b>BSD Template Version:</b>	1.0
<b>Targeted BMS Publication Version</b>	Post Version 2.0.2

### Document Change History

Date of Change	Version	Changed By	Reason for Change	Summary of Change	Model Build #
20041208	0.0.1	MVC, RT	Creation of the document	Migration of the BRD Multi Ship to Order approved by Order BRG and ITRG for publication December 2004 Update based on new requirements: - Cross Docking Ordering process - Enhancements for the music Industry	
09/12/2004	0.0.2	RT	Incorporated changes agreed upon during conference call of 08/12/2004	Modified Order Common (locally) to show NameAndAddress class as option coming off ShipToLogistics class. Its association is called shipToNonCommercial to reflect a "DirectTo-Consumer" scenario. Also named the shipTo association from ShipToLogistics to PartyIdentification as shipTo-Commercial, to differentiate a pure commercial relationship. Both associations are choice relationships. Also, in the Multi Ship To Order class diagram, changed role name from buyerName to buyerIdentification.	
13/12/2004	0.0.3	RT		Removed note in the changes to common class. Changed shipToCommercial back to shipTo in Order common class. Removed role name from MultiShipToOrder to OrderLogisticalInformation.	
20.12.2004	0.0.4	RT		Incorporated common class diagrams, GDD information and code lists.	

Date of Change	Version	Changed By	Reason for Change	Summary of Change	Model Build #
27/12/2004	0.0.5	RT		Inserted Party Common class diagram	
02/01/2005	0.0.6	MVC	Finishing the document for public review	Adjustments of GDD definitions according BRADs approved	
26/01/2005	0.0.7	MVC, RT	Modifications on the texts and classes according to the final resolutions on the public review	<ul style="list-style-type: none"> <li>- Use of the terms business message and ultimate consignee in the problem statement.</li> <li>- Inclusion of the ITRG member (liaison),</li> <li>- Format Table of content</li> <li>- Wording use case description.</li> <li>- Modifications to class diagram</li> </ul>	
03/02/2005	0.0.8	MVC, RT	Modifications on the texts and classes according to the final resolutions on the public review	<ul style="list-style-type: none"> <li>- Replace promotional code header and line role by promotional deal role</li> <li>- Change the relation class Contact to Order Party Information with the role Order Contact</li> <li>- Add the mode attribute to Simple Order Line Item</li> <li>- Add Ship to Detail definition</li> <li>- Remove data source relation</li> <li>- Formatting in the GDD grid</li> <li>- Change the Ship to non-Commercial definition</li> <li>- Include examples for the different scenarios</li> <li>- Include BRG Participants</li> </ul>	
15/02/2005	0.0.9	RT	Modifications on texts and classes according to BRG comments	<ul style="list-style-type: none"> <li>- Added carrier role to PartyIdentification from SimpleOrderLineItem which puts carrier at the Line level. mode and requestedQuantity are already at the Line level as attributes of SimpleOrderLineItem.</li> <li>- Added mode and carrier roles at the header level from ShipToLo-</li> </ul>	

Date of Change	Version	Changed By	Reason for Change	Summary of Change	Model Build #
				gistics and ShipFromLogistics to PartyIdentification. - Made corresponding text changes in GDD report	
18/02/2005	0.10.0	JR	Updates  Advanced to XML for development  Definitions needed for GDD section 1.5.2. GDD platform needs to be updated.	- Review Change History Section 1.9	Model P4CL: 5774  BSD P4CL: 5777
14/03/2005	0.10.1	JR	Pasted GDD generated report	Included in section 1.5.2 GDD Report	
14/03/2005	0.10.2	JR and MVC	Updated GDD	Updated the missing or "Not Available" definition in section 1.5.2	BSD P4CL: 6034
22/04/2005	0.10.3	JR and MVC	Update section 1.7 Implementation Considerations	Update Section according comments received from TRG	BSD P4CL: 6483
23/04/2007	0.10.4	Giovanni Biffi	Editorial Changes	Minor Editorial Changes to the Document	

<b>1</b>	<b>Business Solution .....</b>	<b>6</b>
1.1	Business Domain View .....	6
1.1.1	Problem Statement / Business Need.....	6
1.1.2	Objective.....	6
1.1.3	Audience.....	6
1.1.4	Artefacts .....	6
1.1.5	References .....	7
1.1.6	Acknowledgements .....	8
1.1.7	BRG Members .....	8
1.1.8	ITRG Members .....	8
1.1.9	Task/Project Group Participants ( <i>where applicable</i> ) .....	8
1.1.10	Design Team Members .....	8
1.2	Business Context .....	9
1.3	Additional Technical Requirements Analysis .....	9
1.3.1	Technical Requirements (optional).....	9
1.4	Business Transaction View .....	10
1.4.1	Business Transaction Use Case Diagram.....	10
1.4.2	Use Case Description.....	10
1.4.3	Business Transaction Activity Diagram(s) .....	10
1.4.4	Business Transaction Sequence Diagram(s) (optional) .....	11
1.5	Information Model (including GDD Report) .....	12
1.5.1	Data Description: .....	12
1.5.2	GDD Report: .....	14
1.5.3	Class Diagrams .....	17
1.5.4	Code Lists.....	18
1.6	Business Document Examples.....	18
1.7	Implementation Considerations .....	19
1.8	Testing.....	19
1.8.1	Pass / Fail Criteria .....	19
1.8.2	Test Data .....	20
1.9	Summary of Changes .....	23
<b>2</b>	<b>XML Technical Solution ITRG Packet.....</b>	<b>24</b>

### 1 Business Solution

#### 1.1 Business Domain View

##### 1.1.1 Problem Statement / Business Need

The Multi Ship to Order provides the ability for a buyer to order variable quantities of trade items/services shipped to multiple locations using one business message.

The multi-ship-to order process initiated by the buyer includes the capability to:

- Request shipment to multiple locations
- Vary the quantity of the trade item/service by each ship to location (or ultimate consignee)
- Vary the quantities to the ship to locations (or ultimate consignee) per the order line item
- Specify dates per each ship to location (or ultimate consignee)
- Specify dates per the order line item

##### 1.1.2 Objective

The objective is to enhance the Multi Ship to Order message with specific requirements from the music industry and also to incorporate business needs from the user community that will allow issuing a Cross Docking using the EAN.UCC System.

##### 1.1.3 Audience

The audience for this document is the global business community, the senders and receivers of purchase orders, changes to purchase orders, and responses.

##### 1.1.4 Artefacts

Artefact name	State	Artefact / State description
Change Request 01 -000094	Routed	Original Change submitted
Change Request 03 -000167	Routed	Original Change submitted
Change Request 04 -000137	Routed	Original Change submitted
Change Request 04 -000138	Routed	Original Change submitted
BRD Order v 1.4.3	Published	November 2003. Contains the requirements of the Order process.
BRD Order v 1.4.4	Approved	Contains the business requirements for Cross Docking Order using the Order message. Based on a CR (03-00167) submitted by Bill Purnell on behalf of Order BRG
BRD Multi Ship to Order v0.3.8A	Approved	Contains the business requirements of the Multi Ship to Order process. Based on a CR (01-00094) submitted by Bill Purnell on behalf of Order BRG
BRD Multi Ship to Order v0.3.9	Approved	Contains the business requirements for Cross Docking Order using the Multi Ship to Order message. Based on a CR (03-00167) submitted by Bill Purnell on behalf of Order BRG
BRAD Enhancements to the Multi Ship to Order for Music Industry	Motion to progress	Contains the business requirements for the music industry needed to use the Multi Ship to Order message. Based on a CR (04-00137 & 04-138) submitted by Maria Victoria Caro on behalf of Robert Bates (NAMMS)
Guide to use the XML EAN.UCC Standards for Cross Docking Order v 0.5	Approved	Guide developed by Order BRG to explain and facilitate the use of the Order and Multi Ship to Order XML messages for a Cross Docking Order scenario.

## Business Solution Design

---

---

### 1.1.5 References

Reference Name	Description
None	

### 1.1.6 Acknowledgements

### 1.1.7 BRG Members

Function	Name	Company / organisation
BRG Chair	Bill Purnell	Foot Locker
BRG Member	Alice Agumon	GS1 France
BRG Member	Branko Safaric	GS1 Slovenia
BRG Member	Brendon Beumer	Royal Ahold
BRG Member	Caren Kaegebein	VF Corporation
BRG Member	Don Weston	Pfizer Canada
BRG Member	Dorien Mouthaan	GS1 Nederlands
BRG Member	Frank Kuhlmann	GS1 Germany
BRG Member	Frederico Cunha	GS1 Brazil
BRG Member	Johnny Tang	GS1 Hong Kong
BRG Member	Marcelo Alonso	GS1 Argentina
BRG Member	Massimo Bolchini	GS1 Italy
BRG Member	Naoto Sakamoto	GS1 Japan
BRG Member	Steve Wilhoit	Eveready Battery Company
BRG Member	Thomas Moriarty	JC Penney Co. Inc

### 1.1.8 ITRG Members

Function	Name	Company / organisation
ITRG Member	Pam Flaten	Target Stores
ITRG Member		
ITRG Member		
...		

### 1.1.9 Task/Project Group Participants (*where applicable*)

Function	Name	Company / organisation
BRG Participant	Tan Jin Soon	GS1 Singapore

### 1.1.10 Design Team Members

Function	Name	Organisation
Modeller	John Ryu	GS1
Modeller	Coen Janssen	GS1 Nederlands
Modeller	Robert Toole	GS1
XML Technical Designer		
EANCOM Technical Designer		
Peer Reviewer		

## Business Solution Design

---

### 1.2 Business Context

Context Category	Value(s)
Industry	All
Geopolitical	Global
Product	All
Process	Order
System Capabilities	None
Official Constraints	None

### 1.3 Additional Technical Requirements Analysis

#### 1.3.1 Technical Requirements (optional)

None

Number	Statement	Rationale

### 1.4 Business Transaction View

#### 1.4.1 Business Transaction Use Case Diagram

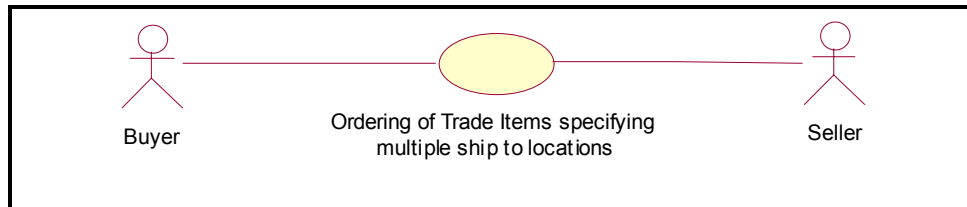


Figure 1 – Multi Ship to Ordering of Trade Items Use Case Diagram

#### 1.4.2 Use Case Description

Use Case ID	UC -1
Use Case Name	Ordering of Trade Items specifying multiple ship to locations
Use Case Description	This Use Case provides the ability for a buyer to order specified quantities of items and services from a seller for multiple shipments.
Actors (Goal)	Buyer Seller.
Performance Goals	
Preconditions	<ul style="list-style-type: none"><li>• The Buyer and Seller have aligned Party and Item information.</li><li>• The Buyer and Seller have established their trading partner agreements</li><li>• The parties (Buyer and Seller) must exchange and have aligned their basic business data such as trading partner names, addresses, locations (Party Information), Item information and Price information.</li><li>• The Buyer and Seller agree that each can produce and process an order with multiple ship-to locations with varied quantities and dates of trade items/services per ship-to location.</li><li>• The Buyer and Seller agree on whether a Receipt Acknowledgement or Order Confirmation messages are required, as an option based on the pre-determined trading partner agreements.</li></ul>
Post conditions	The Seller has received the Multi Ship to Order sent by the Buyer
Scenario	<b>Begins when</b> the Buyer sends an order to the seller indicating multiple ship-to locations with respective trade items/services and quantities <b>Ends when</b> the Seller receives the Multi Ship to Order for processing.
Alternative Scenario	

#### 1.4.3 Business Transaction Activity Diagram(s)

No Activity Diagram

1.4.4 Business Transaction Sequence Diagram(s) (optional)

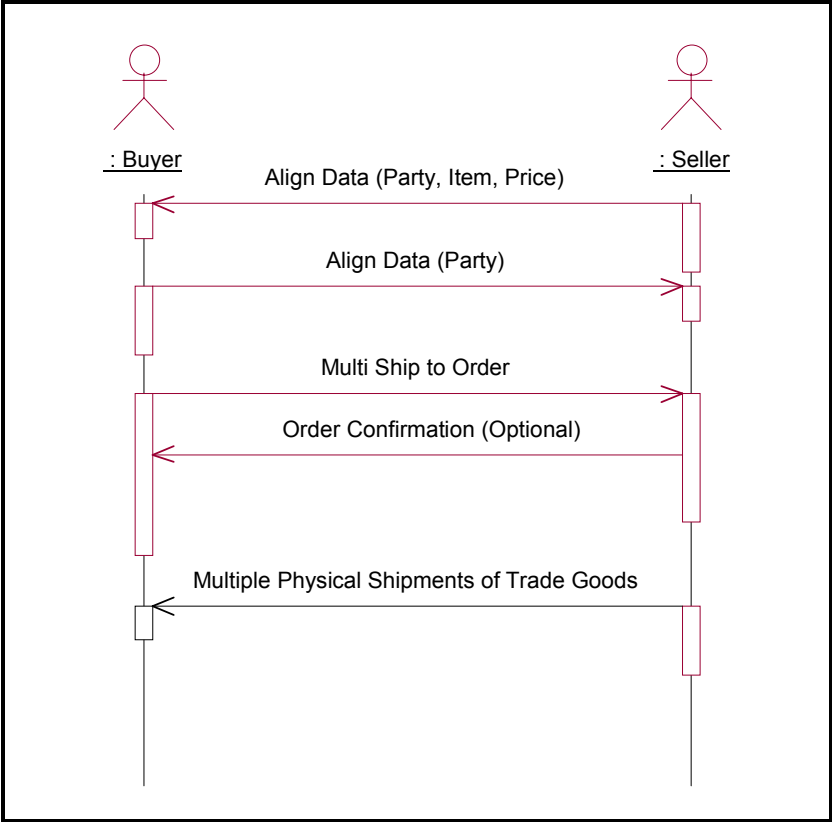


Figure 2 – Multi Ship to Ordering of Trade Items Sequence Diagram

## Business Solution Design

---

### 1.5 Information Model (including GDD Report)

#### 1.5.1 Data Description:

Class (ABIE)	Related Requirements
AllowanceCharge	BSD Common Library
Document	BSD Common Library
EntityIdentification	BSD Common Library
MultiShipToOrder	BRD For Multi Ship to Order v 0.3.8.A BRD For Multi Ship to Order v 0.3.9 BRAD for Enhancements Multi-Ship to Order Music Industry v 0.0.2
MultiShipToOrderLineItem	BRD For Multi Ship to Order v 0.3.8.A BRD For Multi Ship to Order v 0.3.9 BRAD for Enhancements Multi-Ship to Order Music Industry v 0.0.2
OrderLogisticalDateGroup	BSD Common Library
OrderLogisticalInformation	BSD Common Library
OrderPartyInformation	BSD Common Library
PartyIdentification	BSD Common Library
PaymentTerms	BSD Common Library
ShipToDetail	BRD For Multi Ship to Order v 0.3.8.A BRD For Multi Ship to Order v 0.3.9

## Business Solution Design

---

Class (ABIE)	Related Requirements
	BRAD for Enhancements Multi-Ship to Order Music Industry v 0.0.2
SimpleOrderLineItem	BSD Common Library
TradeAgreement	BRAD for Enhancements Multi-Ship to Order Music Industry v 0.0.2
TrasnportationMode	BSD Common Library

## Business Solution Design

---

### 1.5.2 GDD Report:

#### Multi Ship To Order

Class (ABIE)	Attribute (BBIE)	Association (ASBIE)	Secondary Class	Official Dictionary Entry Name	Definition	Multiplicity
MultiShipToOrder				Multi Ship To_ Purchase Order. Details	The Multi Ship to Order provides the ability for a buyer to order variable quantities of trade items/services shipped to multiple locations using one business message	
		None	Allow- anceCharge	Multi Ship To_ Purchase Order. Association. Allow- ance Charge	Contains the information related with the allowance charge in the Multi Ship To Order.	0..*
		None	Document	Multi Ship To_ Purchase Order. Inheritance. Elec- tronic_ Document	Contains the information related with the document in the Multi Ship To Order.	1..1
		orderIdentification	EntityIdentifi- cation	Multi Ship To_ Purchase Order. Order Identifica- tion_ Association. Entity Identification	The unique identification of the Or- der	1..1
		None	MultiShip- ToOrder- LineItem	Multi Ship To_ Purchase Order. Association. Multi Ship To_ Purchase Order Line	Specify the information related to each line item. Multi Ship to Order will contain one or more line items.	1..*
		None	OrderLogisti-	Multi Ship To_ Purchase	Contains the information related	1..1

## Business Solution Design

Class (ABIE)	Attribute (BBIE)	Association (ASBIE)	Secondary Class	Official Dictionary Entry Name	Definition	Multiplicity
			callInformation	Order. Association. Order_ Logistical Information Group	with the dates and destinations of the goods or services.	
		None	OrderPartyInformation	Multi Ship To_ Purchase Order. Association. Order_ Party Group	Contains the information related with the parties involved in the order process.	1..1
		None	Payment-Terms	Multi Ship To_ Purchase Order. Association. Payment Terms	Contains the information related with the payment terms in the Multi Ship To Order.	0..*
		promotionalDeal	TradeAgreement	Multi Ship To_ Purchase Order. Promotional Deal_ Association. Trade Agreement	A reference to a trade agreement related to a promotional deal.	0..1
MultiShipToOrderLineItem				Multi Ship To_ Purchase Order Line. Details	Specify the information related to each line item. Each Multi Ship to Order will contain one or more line items.	
		None	AllowanceCharge	Multi Ship To_ Purchase Order Line. Association. Allowance Charge	Contains the information related with the allowance charge in the detail order level.	0..*
		None	ShipToDetail	Multi Ship To_ Purchase Order Line. Association. Multi Ship To_ Purchase Order Sub Line	Allows the identification of shipping details	0..*
		None	SimpleOrderLineItem	Multi Ship To_ Purchase Order Line. Inheritance. Simple_ Purchase Order Line	Specify the information related to each line item within the order.	1..1

## Business Solution Design

Class (ABIE)	Attribute (BBIE)	Association (ASBIE)	Secondary Class	Official Dictionary Entry Name	Definition	Multiplicity
		promotionalDeal	TradeAgreement	Multi Ship To_ Purchase Order Line. Promotional Deal_ Association. Trade Agreement	A reference to a trade agreement related to a promotional deal. The reference is associated with specific items in the order.	0..1
Ship-ToDetail				Multi Ship To_ Purchase Order Sub Line. Details	Allows the identification of shipping details.	
	requestedQuantity			Multi Ship To_ Purchase Order Sub Line. Requested_ Quantity. Quantity	The quantity which has been requested.	1..1
		None	OrderLogisticalDateGroup	Multi Ship To_ Purchase Order Sub Line. Association. Order Logistical_ Date Group	The date/time on which the goods are requested, to be delivered, pickup or shipped.	0..1
		shipTo	PartyIdentification	Multi Ship To_ Purchase Order Sub Line. Ship To_ Association. Party Identification	The location destination to which goods will be shipped.	0..1
		ultimateConsignee	PartyIdentification	Multi Ship To_ Purchase Order Sub Line. Ultimate Consignee_ Association. Party Identification	The final destination to which goods will be shipped.	0..1
		None	TransportationMode	Multi Ship To_ Purchase Order Sub Line. Association. Transportation Mode	Contains the identification of the carrier and mode associated with the transportation of the goods or services.	0..1

## 1.5.3 Class Diagrams

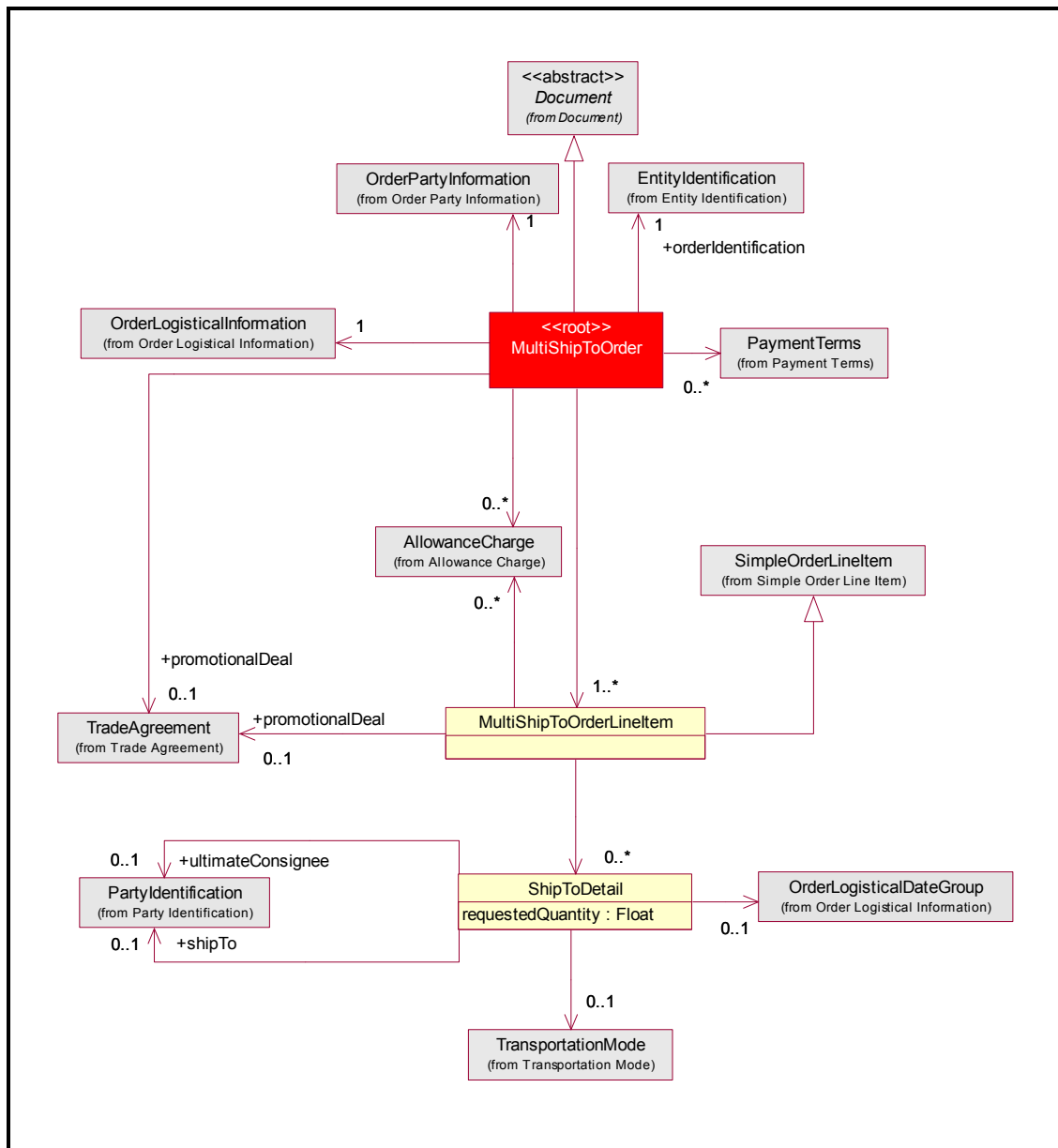


Figure 3 – Multi - Ship To Order Class Diagram

### 1.5.4 Code Lists

No Code Lists

### 1.6 Business Document Examples

#### Example A:

The following is an example of the use of the Multi Ship to Order Message.

The buyer identified by the EAN.UCC Global Location Number 7594567000014 places an order to the supplier identified by the EAN.UCC Global Location Number 8431472300015.

The order identification is PO0222 and is placed on 21<sup>st</sup> of July 2004 at 10:00 AM.

The main distribution center is identified by the EAN.UCC Global Location Number 7594567000090 where the goods should be shipped to and delivered on 23<sup>rd</sup> July 2004 (if no other specification is given)

The buyer orders the following:

EAN.UCC Global Trade Item Number	Quantity	Location
8431472300053	25	7594567000090
8431472300053	14	7594567000083

#### Example B:

The following is an example of the use of the Multi Ship to Order Message for Cross Docking Order with multiple cross docking destinations and multiple final destinations.

The buyer, identified by the EAN.UCC Global Location Number 7704567000017 places an order to the supplier is identified by the EAN.UCC Global Location Number 8881472300018

The order identification is PO00341 and is placed on 4<sup>th</sup> of March 2004 at 10:00 AM.

The main distribution center is identified by the EAN.UCC Global Location Number 7704567000024 where the goods should be shipped to and delivered the 15<sup>th</sup> of March 2004 (if no other specification is given)

The buyer orders the following:

EAN.UCC Global Trade Item Number	Quantity	Warehouse	Store	Delivery Date
8881472300049	8	-	-	-
8881472300025	15	7704567000031	7704567000063	2004-03- 12 (Store)
8881472300032	10	7704567000031	7704567000079	2004-03- 13 (Store)

### Example C:

The following is an example of the use of the Multi Ship to Order Message with additional information used within the music industry.

The buyer identified by the EAN.UCC Global Location Number 0079452000319 places an order to the supplier identified by the EAN.UCC Global Location Number 0074562000457. The person responsible for issuing the order is Joe Smith.

The order identification is PO00759, is placed on the 3<sup>rd</sup> of February 2005 at 10:00 AM and the made reference to the promotional deal number AHK00765.

The goods have to be shipped directly to the consumer by a carrier identified by the EAN.UCC Global Location Number 0078245000635 by air (4<sup>th</sup> February 2005).

The buyer orders the following:

EAN.UCC Global Trade Item Number	Quantity	Consumer information	Delivery Date
0074562000525	2	Carol Johnson 1900 NW 150 Ave Pembroke Pines FL 33028 US	2005-02-10

## 1.7 Implementation Considerations

In the business case scenario where there is the ship to location that is present at the order line item level (use of Ship to Detail class), it overrides the ship to location specified for the entire Multi Ship to Order. Once it is used, is recommended, but not mandatory, to identify ship to locations per the total quantity ordered per line item. The quantities in the ship to detail level should equal the total order quantity at the header level.

## 1.8 Testing

None

### 1.8.1 Pass / Fail Criteria

Number	Test Criteria	Related Requirement	Design Element	Pass Criteria	Fail Criteria
--------	---------------	---------------------	----------------	---------------	---------------

## Business Solution Design

---

Number	Test Criteria	Related Requirement	Design Element	Pass Criteria	Fail Criteria

### 1.8.2 Test Data

#### Example A:

	Value
<b>Document</b>	
Creation Date Time	2004 – 07 -21 10:00
Document Status List	ORIGINAL
<b>Order Identification – Entity Identification</b>	
Unique Creator Identification	PO0222
Content Owner	7594567000014
<b>Order Party Information</b>	
Seller (GLN)	8431472300015
Buyer (GLN)	7594567000014
<b>Order Logistical Information</b>	
Ship to Logistics	
Ship to (GLN)	7594567000090
<b>Order Logistical Date Group</b>	
Requested Delivery Date– Logistical Date	
Requested Delivery Date	2004 – 07 -23
<b>Multiple Ship to Order Line Item</b>	
<b>Simple Order Line Item</b>	
Line Item	1
Trade Item Identification (GTIN)	8431472300053
Requested Quantity	39
<b>Ship to Detail</b>	
Requested Quantity	14
Ship to (GLN)	7594567000083

Example B:

	Value
<b>Document</b>	
Creation Date Time	2004 – 03 -04 10:00
Document Status List	ORIGINAL
<b>Order Identification – Entity Identification</b>	
Unique Creator Identification	PO0341
Content Owner	7704567000017
<b>Order Party Information</b>	
Seller (GLN)	8881472300018
Buyer (GLN)	7704567000017
<b>Order Logistical Information</b>	
Ship to Logistics	
Ship to (GLN)	7704567000024
Order Logistical Date Group	
Requested Delivery Date– Logistical Date	
Date	2004 – 03 – 15
<b>Multiple Ship to Order Line Item</b>	
Simple Order Line Item	
Line Item	1
Trade Item Identification (GTIN)	8881472300049
Requested Quantity	8
<b>Multiple Ship to Order Line Item</b>	
Simple Order Line Item	
Line Item	2
Trade Item Identification (GTIN)	8881472300025
Requested Quantity	15
Ship to Detail	
Requested Quantity	15
Ship to (GLN)	7704567000031
Ultimate Consignee (GLN)	7704567000063
Order Logistical Date Group	
Requested Delivery Date Ultimate Consignee – Logistical Date	
Date	2004-03- 12
<b>Multiple Ship to Order Line Item</b>	
Simple Order Line Item	
Line Item	3
Trade Item Identification (GTIN)	8881472300032
Requested Quantity	10
Ship to Detail	
Requested Quantity	10
Ship to (GLN)	7704567000031
Ultimate Consignee (GLN)	7704567000079
Order Logistical Date Group	
Requested Delivery Date Ultimate Consignee – Logistical Date	
Date	2004-03- 13

Example C:

## Business Solution Design

---

	Value
<b>Document</b>	
Creation Date Time	2005-02-03 10:00
Document Status List	ORIGINAL
<b>Order Identification – Entity Identification</b>	
Unique Creator Identification	PO00759
Content Owner	0079452000319
<b>Promotional Deal – Trade Agreement</b>	
Trade Agreement Reference Number	AHK00765
<b>Order Party Information</b>	
Seller (GLN)	0074562000457
Buyer (GLN)	0079452000319
<b>Order Contact – Contact</b>	
Person or Department Name	Joe Smith
<b>Order Logistical Information</b>	
Ship to Logistics	
<b>Ship to Non Commercial – Name and Address</b>	
Name	Carol Johnson
Street Address One	1900 NW 150 Ave
City	Pembroke Pines
State	FL
Postal Code	33028
Country ISO code	US
<b>Transportation Mode</b>	
Transportation Method Type	AIR
Carrier (GLN)	0078245000635
<b>Order Logistical Date Group</b>	
<b>Requested Delivery Date– Logistical Date</b>	
Requested Delivery Date	2005–02-04
<b>Multiple Ship to Order Line Item</b>	
<b>Simple Order Line Item</b>	
Line Item	1
Trade Item Identification (GTIN)	0074562000525
Requested Quantity	2

### Appendices

#### 1.9 Summary of Changes

Change	BSD Version	Associated CR Number
<p>Removed external class diagrams. External class diagrams should be referenced in the Common Library BSD.</p> <p>Updated MultiShipToOrder class diagram</p> <p>Added an optional association from Ship-ToDetail to TransportationMode.</p> <p>Added an optional association from Ship-ToLogistics to TransportationMode.</p> <p>Added an optional association from SimpleOrderLineItem to TransportationMode.</p> <p>Added optional association from TransportationMode to PartyIdentification with role of +carrier</p> <p>Still need definitions in GDD and updates needed to GDD Platform to generate the Official Dictionary Entry Name.</p> <p>Updated footer</p>	0.10.0	
<p>GDD platform has been updated, and the output copied in section 1.5.2 GDD Report.</p> <p>Vicky and Order BRG needs to validate the definitions and provide definitions for "Not Available".</p>	0.10.1	
<p>MVC and JR updated the missing definition in 1.5.2 GDD report</p>	0.10.2	
<p>MVC and JR updated section 1.7 according to comments received on ITRG review</p>	0.10.3	

### 2 XML Technical Solution ITRG Packet

The Technical Representation of the Business process is documented in a Technical Solution ITRG Packet containing all supplemental XML artefacts and is used by the Information Requirements Group (ITRG) to evaluate the solution. Upon approval from the Information Technical Requirements Group (ITRG), the Technical Solution ITRG Packet is updated to the Technical Solution Implementers Packet and published with the Business

Message Standard at:

[http://www.ean-ucc.org/global\\_smp/ean.ucc\\_standards.htm](http://www.ean-ucc.org/global_smp/ean.ucc_standards.htm).

Technical Solution ITRG Packet Content:

- Business Message Standard (BMS)
- ITRG Review Packet
  - Style Sheet: This HTML has been created using a Style Sheet that is a visual representation of the data. It is not an actual Style Sheet, but an ex-ample of what a Style Sheet may look like.
  - Instance File: The Instance File is an example of what the schema may look like when it includes live data. This can be used as comparison to a completed schema and can serve as a point of reference for development.
  - Technical Level GDD Report

Technical Solution Implementers Packet Content:

Contains all the message specific.XSD files required to implement

Example:

- AS2Envelope
- Command.xsd
- DocumentCommand.xsd
- Proxy.xsd
- ComponentLibrary.xsd

Both the Business Message Standard and the Implementers Packet are available during the ITRG Review Period in the working documents section of the ITRG eRoom:

[http://eroom.uncouncil.org/eRoom/facility/InformationTechnicalAssessmentGroupITAG/0\\_14f7](http://eroom.uncouncil.org/eRoom/facility/InformationTechnicalAssessmentGroupITAG/0_14f7)

All documents for review will be in this folder listed by name of the Change Request and Change Request Number. The Business Message Standard is not open for review, but offered as the basis for determining the suitability of the technical solutions.

This eRoom may be accessed by using the following User Name and Password:

User Name: guest

Password: guest