

Business Message Standard (BMS)

for

Plan / Exception Notification

BRG: Plan

Version: 2.0.3

Date: 31/03/2005



Change Request Reference

Refer to Change Request (CR) Number(s):	
CR Submitter(s):	
Date of CR Submission to GSMP:	

Business Requirements Document (BRAD) Reference

BRAD Title: Exception Notification – Business Requirement Document
BRAD Date: 17/05/2004
BRAD Version: 1.7.1

BRAD Title:
BRAD Date:
BRAD Version:

Document Summary

Document Title:	BMS For Plan/Exception Notification
Document Version	2.0.3
Owner:	Plan BRG
Status:	(Check one box) <input type="checkbox"/> DRAFT <input checked="" type="checkbox"/> Approved
BMS Template Version:	1.0
Targeted BMS Publication Version	2.0.2

Document Change History

Date of Change	Version	Changed By	Reason for Change	Summary of Change	Model Build #
31/03/2005	2.0.1	Alice Aguemon	Initial Version in BMS/BSD template	Migration of BRD to standard BMS/BSD format	N/A
31/03/2005	2.0.2	Andrew Hearn	Context Update	Updated the context listed within the document	N/A
23/04/2007	2.0.3	Giovanni Biffi	Editorial Changes	Minor Editorial Changes to the Document	N/A

Business Message Standard

Table of contents

Chapter	Page
1 Business Solution Design	7
1.1 Business Domain View.....	7
1.1.1 Problem Statement / Business Need.....	7
1.1.2 Objective.....	7
1.1.3 Audience.....	7
1.1.4 Artefacts	8
1.1.5 References	8
1.1.6 Acknowledgements	9
1.1.7 BRG Members.....	9
1.1.8 ITRG Members	9
1.1.9 Task/Project Group Participants (<i>where applicable</i>)	9
1.1.10 Design Team Members	9
1.2 Business Context	10
1.3 Additional Technical Requirements Analysis	10
1.3.1 Technical Requirements (optional).....	10
1.4 Business Transaction View	11
1.4.1 Business Transaction Use Case Diagram.....	11
1.4.2 Use Case Description.....	Error! Bookmark not defined.
1.4.3 Business Transaction Activity Diagram(s)	13
1.4.4 Business Transaction Sequence Diagram(s) (optional).....	Error! Bookmark not defined.
1.5 Information Model (including GDD Report)	15
1.5.1 Data Description:	15
1.5.2 GDD Report :	17
1.5.3 Class Diagrams	28
1.5.4 Code Lists.....	Error! Bookmark not defined.
1.6 Business Document Example	31
1.7 Implementation Considerations.....	32
1.8 Testing.....	32
1.8.1 Pass / Fail Criteria	32
1.8.2 Test Data	32
1.9 Appendices.....	33
1.10 Summary of Changes.....	33

2 XML Technical Solution 34

1 Business Solution Design

1.1 Business Domain View

1.1.1 Problem Statement / Business Need

Collaborative Planning Forecasting and Replenishment (CPFR®) is a well documented nine step process developed and maintained by the Voluntary Interindustry Commerce Standards Association (VICS) for use by trading partners.

In the CPFR® process an exception notification is an indication of a variance from trading partner guidelines for changes in a forecast, differences between partner forecasts, or key performance metrics (forecast error, overstock, etc.).

The Exception Notification Business Requirements Document is the output of the VICS CPFR®, GCI, the Plan BRG (Business Requirements Group) and EAN ECEG (Electronic Commerce Expert Group). It is the responsibility of the BRG's to provide the business requirements for the process of the creation and maintenance of the business and data models. The BRG's develop and maintain business process models and supporting Use Case diagrams, Class diagrams and data requirements for a specific business function in a global electronic commerce environment. The BRG's review and resolve change requests. The BRG's provide guidance for the technical application of new business processes and changes to existing business processes. Currently, BRG's exist for the following business processes: Align Data, Plan, Order, Despatch, Pay, After Sales Services, Asset Management, Manufacturing and Point Of Service.

EAN (ECEG) covers similar functionality, through a pool of experts that liaises with the local users, ensuring the effective gathering of the business requirements from its network of national Member Organisations worldwide.

There are several types of exceptions, but all types describe a variance of a data item from an expected value during a particular time interval. There are:

- Operational Exceptions to alert users to a variance from expected product activity data values, such as a surge in emergency orders, an overstock condition, or reduced shipment levels
- Metric Exceptions to identify variances in key performance metrics such as forecast accuracy and fill rate from their expected values in a particular time period.
- Forecast Data Item Exceptions. There are two kinds within this type.
 - Forecast Accuracy Exceptions to compare a forecasted item with the actual value observed. (Example: a sales forecast would be compared to point-of-sale data for the same period, and an exception is triggered if the numbers vary by more than the forecast item exception criterion threshold).
 - Forecast Comparison Exceptions to compare two forecast streams. (Examples: either the buyer's forecast to the seller's or two generations of a forecast produced by the same trading partner).

CPFR® is the registered trademark of VICS, the Voluntary Interindustry Commerce Standards Association

1.1.2 Objective

The objective of this BRD is to document a process-to-data approach. The Unified Modelling Language (UML) is used for notation. Processes are clearly understood because of the use of formal modelling with the UML models. Agreed to models permit the application of the data elements to support the processes. The biggest benefit of this process-to-data approach is the alignment of the model to fit the business need.

The objective is to notify a trading partner when a buyer or seller exception has been triggered.

1.1.3 Audience

Business Solution Design

The audience for this document is anyone involved in collaborative planning, forecasting and replenishment.

To better understand this business requirements document the audience should become familiar with the VICS CPFR® Process, the VICS CPFR® XML Messaging Model, June 13, 2001 and VICS Collaborative Planning Forecasting and Replenishment (CPFR®), Global Commerce Initiative Recommendation, June 30, 2001 as these documents provide the basis and context of the business requirements.

1.1.4 Artefacts

Artefact name	State	Artefact / State description

1.1.5 References

Reference Name	Description
EAN•UCC Global Business Model (Process and Data), "The Trade Of Goods and Services", October 1999	
VICS CPFR® XML Messaging Model, June 13, 2001	
VICS Collaborative Planning Forecasting and Replenishment (CPFR®), Global Commerce Initiative Recommendation, June 30, 2001	

1.1.6 Acknowledgements

1.1.6.1 BRG Members

Function	Name	Company
Plan BRG Co-Chair	Not filled in the previous BRD	
Plan BRG Member	Not filled in the previous BRD	
Plan BRG Member		
Plan BRG Member		
Plan BRG Member		
Plan BRG Manager		

1.1.6.2 ITRG Members

Function	Name	Company / organisation
ITRG Chair	None	
ITRG Member	None	
ITRG Member	None	
ITRG Member	None	
...		

1.1.6.3 Task/Project Group Participants (*where applicable*)

Function	Name	Company / organisation
Participant	None	
Participant	None	
Participant	None	
...		

1.1.6.4 Design Team Members

Function	Name	Organisation
Modeller		
XML Technical Designer		
EANCOM Technical Designer		
Peer Reviewer		

Business Solution Design

1.2 Business Context

Context Category	Value(s)
Industry	All
Geopolitical	All
Product	All
Process	Plan
System Capabilities	EAN.UCC
Official Constraints	None

1.3 Additional Technical Requirements Analysis

1.3.1 Technical Requirements (optional)

(User Interface, Security, Performance, Quality, etc.)

Number	Statement	Rationale

1.4 Business Transaction View

1.4.1 Business Transaction Use Case Diagram

Use Case ID	UC-1																								
Use Case Name	Request Exception Notification																								
Use Case Description	Not filled in the previous BRD																								
Actors (Goal)	<ul style="list-style-type: none">Exception Notification is a two-actor system involving a buyer and a seller.																								
Performance Goals	Goals related to technical requirements None																								
Preconditions	CPFR® Steps 1 through 6 have been completed.																								
Post conditions	Success : An Exception Notification is received by the other trading partner Failure : A variance occurred and was not triggered resulting in the trading partner not being notified of an exception.																								
Scenario	<p>Begins when there is a variance of a data item from an expected value during a particular time interval. The variance is triggered by agreed upon buyer and seller exception criteria.</p> <p>Continues with...</p> <table><thead><tr><th></th><th>Step #</th><th>Actor</th><th>Activity Step</th></tr></thead><tbody><tr><td>1</td><td></td><td></td><td>Both trading partners have established the buyer and seller exception criteria</td></tr><tr><td>2</td><td></td><td></td><td>CPFR® is being practiced and data collected</td></tr><tr><td>3</td><td></td><td></td><td>A variance exceeding the exception criteria occurs</td></tr><tr><td>4</td><td></td><td></td><td>The variance to operational, metric or forecast items is identified</td></tr><tr><td>5</td><td></td><td></td><td>An exception notification is sent to the other trading partner</td></tr></tbody></table> <p>Ends when... the message is transmitted</p>		Step #	Actor	Activity Step	1			Both trading partners have established the buyer and seller exception criteria	2			CPFR® is being practiced and data collected	3			A variance exceeding the exception criteria occurs	4			The variance to operational, metric or forecast items is identified	5			An exception notification is sent to the other trading partner
	Step #	Actor	Activity Step																						
1			Both trading partners have established the buyer and seller exception criteria																						
2			CPFR® is being practiced and data collected																						
3			A variance exceeding the exception criteria occurs																						
4			The variance to operational, metric or forecast items is identified																						
5			An exception notification is sent to the other trading partner																						
Alternative Scenario	There are no alternative scenarios.																								

Business Solution Design

	None Step # Actor Activity Step
Related Requirements	None
Related Rules	<i>Business rules associated with use case.</i> None

Business Solution Design

1.4.2 Business Transaction Activity Diagram(s)

Not filled in the previous BRD

Business Solution Design

1.4.3 Business Transaction Sequence Diagram(s) (optional)

Not filled in the previous BRD

Business Solution Design

1.5 Information Model (including GDD Report)

1.5.1 Data Description:

Class (ABIE)	Attribute (BBIE)	Association (ASBIE)	Secondary Class	Related Requirements
CollaborativeTradeItem				BRD for Exception Notification Version 1.7.1, 17.05.2004
		buyerLocation	PartyIdentification	BRD for Exception Notification Version 1.7.1, 17.05.2004
		sellerLocation	PartyIdentification	BRD for Exception Notification Version 1.7.1, 17.05.2004
		product	TradeItemIdentification	BRD for Exception Notification Version 1.7.1, 17.05.2004
Exception				BRD for Exception Notification Version 1.7.1, 17.05.2004
	collaborationPriority			BRD for Exception Notification Version 1.7.1, 17.05.2004
	comparedValue			BRD for Exception Notification Version 1.7.1, 17.05.2004
	exceptionComment			BRD for Exception Notification Version 1.7.1, 17.05.2004
	exceptionStatus			BRD for Exception Notification Version 1.7.1, 17.05.2004
	resolutionCode			BRD for Exception Notification Version 1.7.1, 17.05.2004
	sourceValue			BRD for Exception Notification Version 1.7.1, 17.05.2004
		None	CollaborativeTradeItem	BRD for Exception Notification Version 1.7.1, 17.05.2004
		None	ForecastAccuracyException	BRD for Exception Notification Version 1.7.1, 17.05.2004
		None	ForecastComparisonException	BRD for Exception Notification Version 1.7.1, 17.05.2004
		None	MetricException	BRD for Exception Notification Version 1.7.1, 17.05.2004
		variance	MultiMeasurementValue	BRD for Exception Notification Version 1.7.1, 17.05.2004
		None	OperationalException	BRD for Exception Notification Version 1.7.1, 17.05.2004
		effectiveDate	TimePeriod	BRD for Exception Notification Version 1.7.1, 17.05.2004

Business Solution Design

ExceptionNotification				BRD for Exception Notification Version 1.7.1, 17.05.2004
		None	ForecastDataItemException	BRD for Exception Notification Version 1.7.1, 17.05.2004
		None	PlanDocument	BRD for Exception Notification Version 1.7.1, 17.05.2004
ForecastAccuracyException				BRD for Exception Notification Version 1.7.1, 17.05.2004
		None	ForecastDataItemException	BRD for Exception Notification Version 1.7.1, 17.05.2004
ForecastComparisonException				BRD for Exception Notification Version 1.7.1, 17.05.2004
	comparisonDataSource			BRD for Exception Notification Version 1.7.1, 17.05.2004
	comparisonForecastGenerationDateTime			BRD for Exception Notification Version 1.7.1, 17.05.2004
		None	ForecastDataItemException	BRD for Exception Notification Version 1.7.1, 17.05.2004
ForecastDataItemException				BRD for Exception Notification Version 1.7.1, 17.05.2004
	dataSource			BRD for Exception Notification Version 1.7.1, 17.05.2004
	forecastGenerationDateTime			BRD for Exception Notification Version 1.7.1, 17.05.2004
	forecastPurpose			BRD for Exception Notification Version 1.7.1, 17.05.2004
	forecastType			BRD for Exception Notification Version 1.7.1, 17.05.2004
MetricException				BRD for Exception Notification Version 1.7.1, 17.05.2004
	metricType			BRD for Exception Notification Version 1.7.1, 17.05.2004
OperationalException				BRD for Exception Notification Version 1.7.1, 17.05.2004
	activityType			BRD for Exception Notification Version 1.7.1, 17.05.2004

Business Solution Design

1.5.2 GDD Report :

Class (ABIE)	Attribute (BBIE)	Association (ASBIE)	Secondary Class	Official Dictionary Entry Name	Definition	Multiplicity
CollaborativeTradeItem				Collaborative Item. Details	!! This external class originates in Plan Common and is a class that is used in more than one CPFR class diagram. Collaborative Trade Item identifies the product with the buyer and seller locations.	
		buyerLocation	PartyIdentification	Collaborative Item. Buyer Location. Party Identification	None	1..1
		sellerLocation	PartyIdentification	Collaborative Item. Seller Location. Party Identification	None	1..1
		product	TradeItemIdentification	Collaborative Item. Product. Trade Item Identification	None	1..1
Exception				Forecast Exception Line. Details		
	collaborationPriority			Forecast Exception Line. Collaborative Priority. Collaboration	!! This external class originates in Collaboration Common. Each exception shall have	0..1

Business Solution Design

				Priority_ Code	an assigned collaboration priority code. This class provides the codes. The collaboration priority code list has the following attributes: Low, Medium, High,	
	comparedValue			Forecast Exception Line. Compared Value. Numeric	The value that was compared with the source value that resulted in the exception (e.g. local forecast, actual inventory level)	1..1
	exceptionComment			Forecast Exception Line. Exception Comment. Text	A string of text intended as an explanation, or illustration for the exception.	1..1
	exceptionStatus			Forecast Exception Line. Exception Status. Exception Status_ Code	!! Each exception shall have a designated exception status. This class provides the codes. The Exception Status Code List has the following attributes: Acknowledged, New, Resolved, Superseded, Unresolvable, , 4.1.8 Forecast Accuracy Exception	1..1
	resolutionCode			Forecast Exception Line. Resolution Code. Code	The exception notification message shall provide the receiving party with an under-	1..1

Business Solution Design

					standing of why the exception was generated. A resolution code list is provided for the selection and assignment of a resolution code to the exception.	
	sourceValue			Forecast Exception Line. Source Value. Numeric	The value used as the basis of comparison (e.g. POS, partner forecast, safety stock threshold).	1..1
		None	CollaborativeTradeItem	Forecast Exception Line. Association. Collaborative Item	!! This external class originates in Plan Common and is a class that is used in more than one CPFR class diagram. Collaborative Trade Item identifies the product with the buyer and seller locations.	1..1
		None	ForecastAccuracyException	Forecast Exception Line. Choice_ Association. Accuracy_ Forecast Exception Line	!! This external class originates in Plan Common and is a class that is used in more than one CPFR class diagram. Collaborative Trade Item identifies the product with the buyer and seller locations.	1..1
		None	ForecastComparisonException	Forecast Exception Line.	!! This external class originates in Plan	1..1

Business Solution Design

				Choice_ Association. Comparison_ Forecast Exception Line	Common and is a class that is used in more than one CPFR class diagram. Collaborative Trade Item identifies the product with the buyer and seller locations.	
		None	MetricException	Forecast Exception Line. Choice_ Association. Metric_ Forecast Exception Line	!! This external class originates in Plan Common and is a class that is used in more than one CPFR class diagram. Collaborative Trade Item identifies the product with the buyer and seller locations.	1..1
		variance	MultiMeasurement-Value	Forecast Exception Line. Variance. Multi-unit Measure	!! This external class originates in Plan Common and is a class that is used in more than one CPFR class diagram. Collaborative Trade Item identifies the product with the buyer and seller locations.	1..1
		None	OperationalException	Forecast Exception Line. Choice_ Association. Operational_ Forecast Exception Line	!! This external class originates in Plan Common and is a class that is used in more than one CPFR class diagram. Collaborative Trade Item	1..1

Business Solution Design

					identifies the product with the buyer and seller locations.	
		effectiveDate	TimePeriod	Forecast Exception Line. Date. Date_ Time Period	!! This external class originates in Plan Common and is a class that is used in more than one CPFR class diagram. Collaborative Trade Item identifies the product with the buyer and seller locations.	1..1
ExceptionNotification				Forecast Exception. Details	!! The Exception Notification classes are pictured and are listed here alphabetically. These include: Activity Type Code List, Collaboration Priority Code List, Collaborative Trade Item , Data Source Code List, Exception , Exception Notification, Exception Status Code List, Forecast Accuracy Exception, Forecast Comparison Exception, Forecast Data Item Exception, Forecast Purpose Code List, Forecast Type Code List, Measurement, Metric Excep-	

Business Solution Design

					tion, Metric Type Code List, Operational Exception, Plan Document, Resolution Code List, Time Period	
		None	ForecastDataItemException	Forecast Exception. Exception. Data Item_Forecast Exception Line	!! This class links the type of exception, the collaboration priority code, exception status code time period and collaborative item to an exception report. Two attributes enable a party receiving an exception to interpret it even if the party does not have local access to the underlying data that triggered the message. The attributes are: Comment, Compared Value, Source Value.	1..*
		None	PlanDocument	Forecast Exception. Inheritance_Association. Plan Document	!! This class links the type of exception; the collaboration priority code; exception status code time period and collaborative item to an exception report. Two attributes enable a party receiving an exception to interpret it even if the party does not have local	1..1

Business Solution Design

					access to the underlying data that triggered the message. The attributes are: Comment; Compared Value; Source Value.	
ForecastAccuracyException				Accuracy_ Forecast Exception Line. Details	This is one of the two kinds of forecast data item exceptions. This class identifies the exception as a forecast accuracy exception.	
		None	ForecastDataItemException	Accuracy_ Forecast Exception Line. Association. Data Item_ Forecast Exception Line	None	1..1
ForecastComparisonException				Comparison_ Forecast Exception Line. Details	This establishes the criterion for one of the two kinds of forecast data item exceptions. This class compares the buyer and seller data source(s) and identifies the time basis of comparison.	
	comparisonDataSource			Comparison_ Forecast Exception Line. Comparison_ Data Source. Data Source_ Code	!! This external class originates in Plan Common and is a class that is used in more than one CPFR class diagram. The source of a forecast	1..1

Business Solution Design

					data item exception shall be identified. This class provides the codes. The data source code list has the following attributes: Buyer, Seller	
	comparisonForecastGenerationDateTime			Comparison_Forecast Exception Line. Comparison_Forecast Generation Date Time. Date Time	The date and time that the comparison forecast was generated, for identification purposes.	1..1
		None	ForecastDataItemException	Comparison_Forecast Exception Line. Association. Data Item_Forecast Exception Line	None	1..1
ForecastDataItemException				Data Item_Forecast Exception Line. Details	This class links the type of exception, the collaboration priority code, exception status code time period and collaborative item to an exception report. Two attributes enable a party receiving an exception to interpret it even if the party does not have local access to the underlying data that triggered the message. The	

Business Solution Design

					attributes are: Comment, Compared Value, Source Value	
	dataSource			Data Item_ Forecast Exception Line. Data Source. Data Source_ Code	!! This external class originates in Plan Common and is a class that is used in more than one CPFR class diagram. The source of a forecast data item exception shall be identified. This class provides the codes. The data source code list has the following attributes: Buyer, Seller	1..1
	forecastGenerationDateTime			Data Item_ Forecast Exception Line. Forecast Generation Date Time. Date Time	Date and time that the forecast was generated/created, for identification purposes.	1..1
	forecastPurpose			Data Item_ Forecast Exception Line. Forecast Purpose. Forecast Purpose Criteria Type_ Code	!! This external class originates in Plan Common and is a class that is used in more than one CPFR class diagram. Each Forecast Data Item Exception Criterion will be assigned a forecast purpose code.	1..1
	forecastType			Data Item_ Forecast Exception	!! This external class originates in Plan	0..1

Business Solution Design

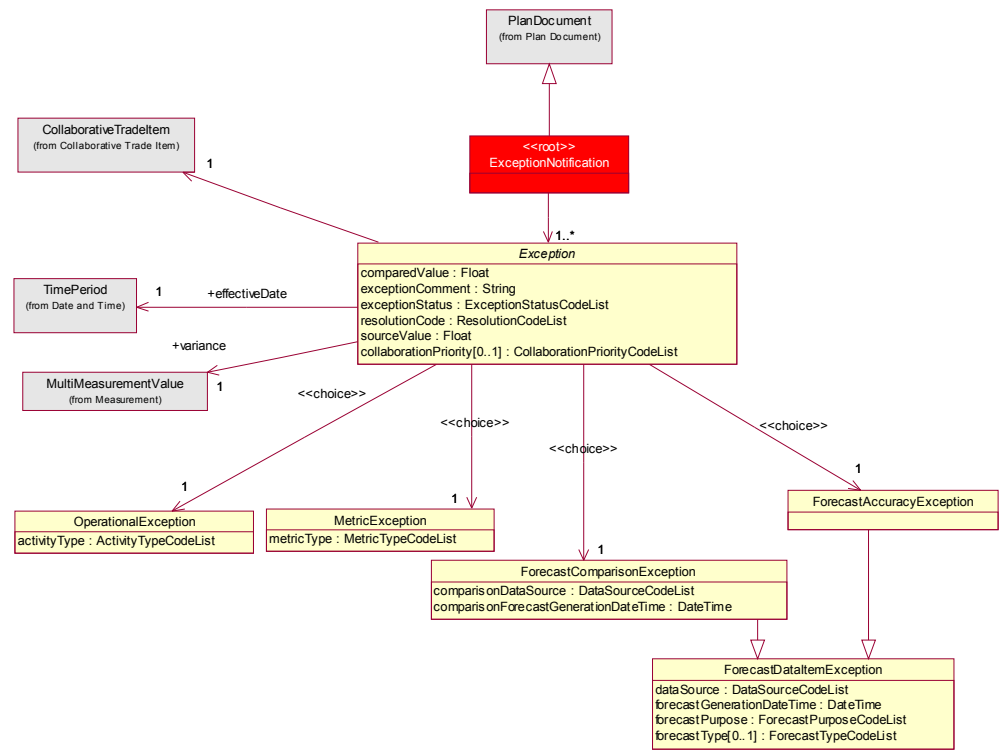
				tion Line. Forecast Type. Forecast Type_ Code	Common and is a class that is used in more than one CPFR class diagram. Each Abstract Forecast Data Item will be assigned a forecast type code identifying it as a base, promotional, seasonal or total type of item. The Forecast Type Code List has the following attributes. Base, Promotional, Seasonal, Total	
MetricException				Metric_ Forecast Exception Line. Details	!! This is one of the three types of exceptions. This class links the metric type code to the exception. This class has no attributes.	
	metricType			Metric_ Forecast Exception Line. Metric Type. Metric Criteria Type_ Code	!! This external class originates in Plan Common and is a class that is used in more than one CPFR class diagram. This class identifies the metric type code. The metric type code list has the following attributes: Fill rate, Forecast accuracy, Gross margin, In	1..1

Business Solution Design

					stock, On time delivery, Supply	
OperationalException				Operational_Forecast Exception Line. Details	!! This is one of the three types of exceptions. This class links the activity type code list to the exception. This class has no attributes.	
	activityType			Operational_Forecast Exception Line. Activity Type. Activity Criteria Type_Code	!! This external class originates in Plan Common and is a class that is used in more than one CPFR class diagram. This class identifies the activity type code for an operational exception. The activity type code list has the following attributes: Canceled orders, Emergency orders , On hand, Orders, Receipts, Sales, Shipments	1..1

1.5.3 Class Diagrams

Class Diagram for Exception Notification



1.5.4 Code Lists

Code List Name	Code List Description
CollaborationPriorityCodeList	
Code Name	Code Description
HIGH	N/A
LOW	N/A
MEDIUM	N/A

Code List Name	Code List Description
MetricTypeCodeList	
Code Name	Code Description
FILL_RATE	N/A
FORECAST_ACCURACY	N/A
GROSS_MARGIN	N/A
IN_STOCK	N/A
ON_TIME_DELIVERY	N/A
SUPPLY	N/A

Code List Name	Code List Description
ForecastTypeCodeList	
Code Name	Code Description
BASE	N/A
PROMOTIONAL	N/A
SEASONAL	N/A
TOTAL	N/A

Code List Name	Code List Description
DataSourceCodeList	
Code Name	Code Description
BUYER	N/A
SELLER	N/A

Code List Name	Code List Description
ForecastPurposeCodeList	
Code Name	Code Description
ORDER_FORECAST	Not Available
SALES_FORECAST	Not Available

Code List Name	Code List Description
ResolutionCodeList	
Code Name	Code Description
LOCAL_INTERPOLATED_VALUE	N/A
LOCAL_ISSUE_CHANGED_VALUE	N/A
LOCAL_ISSUE_LEFT_VAL	N/A

Business Solution Design

UE_UNCHANGED	
NEW_VALUE_JOINTLY_ID ENTIFIED	N/A
OBSOLETE_VALUE	N/A
PARTNER_ISSUE_CHANG ED_VALUE	N/A
PARTNER_ISSUE_LEFT_V ALUE_UNCHANGED	N/A
UNRESOLVABLE	N/A

Code List Name	Code List Description
ExceptionStatusCodeList	
Code Name	Code Description
ACKNOWLEDGED	N/A
NEW	N/A
RESOLVED	N/A
SUPERSEDED	N/A
UNRESOLVABLE	N/A

Code List Name	Code List Description
ActivityTypeCodeList	
Code Name	Code Description
CANCELED_ORDERS	N/A
EMERGENCY_ORDERS	N/A
ON_HAND	N/A
ORDERS	N/A
RECEIPTS	N/A
SALES	N/A
SHIPMENTS	N/A

1.6 Business Document Example

Not filled in the previous BRD

Business Solution Design

1.7 Implementation Considerations

Not filled in the previous BRD

1.8 Testing

1.8.1 Pass / Fail Criteria

Unit testing criteria for business solution.

Number	Test Criteria	Related Requirement	Design Element	Pass Criteria	Fail Criteria
1					
2					
3					

1.8.2 Test Data

Test data is detailed in section 1.7.

Business Solution Design

1.9 Appendices

1.10 Summary of Changes

(Details changes to BMS for each version by BMS Section)

Change	BMS Version	Associated CR Number

2. XML Technical Solution ITRG Packet

The Technical Representation of the Business process is documented in a Technical Solution ITRG Packet containing all supplemental XML artefacts and is used by the Information Requirements Group (ITRG) to evaluate the solution. Upon approval from the Information Technical Requirements Group (ITRG), the Technical Solution ITRG Packet is updated to the Technical Solution Implementers Packet and published with the Business

Message Standard at:

http://www.ean-ucc.org/global_smp/ean.ucc_standards.htm.

Technical Solution ITRG Packet Content:

- Business Message Standard (BMS)
- ITRG Review Packet
 - Style Sheet: This HTML has been created using a Style Sheet that is a visual representation of the data. It is not an actual Style Sheet, but an ex-ample of what a Style Sheet may look like.
 - Instance File: The Instance File is an example of what the schema may look like when it includes live data. This can be used as comparison to a completed schema and can serve as a point of reference for development.
 - Technical Level GDD Report

Technical Solution Implementers Packet Content:

Contains all the message specific.XSD files required to implement

Example:

- AS2Envelope
- Command.xsd
- DocumentCommand.xsd
- Proxy.xsd
- ComponentLibrary.xsd

Both the Business Message Standard and the Implementers Packet are available during the ITRG Review Period in the working documents section of the ITRG eRoom:

http://eroom.uncouncil.org/eRoom/facility/InformationTechnicalAssessmentGroupITAG/0_14f7

All documents for review will be in this folder listed by name of the Change Request and Change Request Number. The Business Message Standard is not open for review, but offered as the basis for determining the suitability of the technical solutions.

This eRoom may be accessed by using the following User Name and Password:

User Name: guest

Password: guest