

# **Business Message Standard (BMS)**

**for**

**Pay/Control Totals  
Buyer to Buyer's Financial Institution**

**BRG: Pay**

**BMS Release: 2.0**

**Document Version: 2.0.1**

**Release Date: 31.12.2004**

*(dd.mm.cyyy)*



### Change Request Reference

<b>Refer to Change Request (CR) Number(s):</b>	N/A
<b>CR Submitter(s):</b>	N/A
<b>Date of CR Submission to GSMP:</b>	N/A

### Business Requirements Document (BRAD) Reference

<b>BRAD Title:</b> Business Requirements Document For Control Totals -Buyer to Buyer's Financial Institution
<b>BRAD Date:</b> 17.04.2003
<b>BRAD Version:</b> 1.4

<b>BRAD Title:</b>
<b>BRAD Date:</b>
<b>BRAD Version:</b>

### Document Summary

<b>Document Title:</b>	BMS for Pay/Control Totals -Buyer to Buyer's Financial Institution
<b>Document Version</b>	2.0.1
<b>Owner:</b>	Pay BRG
<b>Status:</b>	(Check one box) <input type="checkbox"/> DRAFT    x Approved
<b>BMS Template Version:</b>	1.1
<b>Targeted BMS Publication Version</b>	2.0

### Document Change History

*Note: During development include revisions in history. Upon Approval, eliminate revisions and include only delta from previous version.*

Date of Change	Version	Changed By	Reason for Change	Summary of Change	Model Build #
31.12.2004	2.0.0	John Ryu	Initial Version in BMS/BSD template	Migration of BRD to standard BMS/BSD format	N/A
24.04.2007	2.0.1	Giovanni Biffi	Editorial Changes	Minor Editorial Changes to the Document	N/A

# Business Message Standard

---

## Table of contents

---

Chapter	Page
<b>1 Business Solution .....</b>	<b>1</b>
1.1 Business Domain View.....	1
1.1.1 Problem Statement / Business Need.....	1
1.1.2 Objective.....	1
1.1.3 Audience.....	1
1.1.4 Artefacts .....	1
1.1.5 References .....	1
1.1.6 Acknowledgements .....	2
1.1.6.1 BRG Members .....	2
1.1.6.2 ITRG Members .....	3
1.1.6.3 Task/Project Group Participants ( <i>where applicable</i> ) .....	3
1.1.6.4 Design Team Members .....	3
1.2 Business Context .....	4
1.3 Additional Technical Requirements Analysis .....	4
1.3.1 Technical Requirements (optional).....	4
1.4 Business Transaction View .....	5
1.4.1 Business Transaction Use Case Diagram.....	5
1.4.2 Use Case Description.....	5
1.4.3 Business Transaction Activity Diagram(s) .....	6
1.4.4 Business Transaction Sequence Diagram(s) (optional) .....	6
1.4.4.1 Send control total number and grand total amount .....	6
1.5 Information Model (including GDD Report) .....	7
1.5.1 Data Description: .....	7
1.5.2 GDD Report : .....	8
1.5.3 Class Diagrams .....	12
1.5.3.1 Control Total .....	12
1.5.4 Code Lists.....	13
1.6 Business Document Example .....	14
1.7 Implementation Considerations.....	14
1.8 Testing.....	14
1.8.1 Pass / Fail Criteria .....	14
1.8.2 Test Data .....	14

**Business Message Standard**

---

Table of contents

---

1.9 Appendices..... 15

1.10 Summary of Changes..... 15

**2 XML Technical Solution ITRG Packet..... 16**

### 1 Business Solution

#### 1.1 Business Domain View

##### 1.1.1 Problem Statement / Business Need

As part of the financial checks and balances employed within a company, to insure that sufficient funds are available for payment by the financial institution, and in order to remove the possibility of the submission of fraudulent payment transactions, a validation process is needed to verify payment requests submitted to the paying financial institution.

Typically, payment transactions are generated by the accounts payable department of a company and forwarded to a financial institution for payment. As part of a company's control mechanism, a request has been made to have the capability of initiating a verification document to the financial institution, confirming the monetary value and count of payments to be made by the financial institution.

##### 1.1.2 Objective

To supply the detail design of a Control Totals business transaction needed to meet the requirements of the referenced BRAD(s).

##### 1.1.3 Audience

The audience of the standards would be any participant in the global supply chain. This would include retailers, manufacturers, service providers and other third parties.

##### 1.1.4 Artefacts

Artefact name	State	Artefact / State description

##### 1.1.5 References

Reference Name	Description
Business Requirements Document For Control Totals -Buyer to Buyer's Financial Institution, Version 1.4, 17.04.2003	

### 1.1.6 Acknowledgements

#### 1.1.6.1 BRG Members

Function	Name	Company / organisation
BRG Member	Mickey Atkins	AHOLD Information Services
BRG Member	Janet Bailey	VF Corporation
BRG Member	Brian Barker	Wal-Mart Stores
BRG Member	Henry Gerstman	Century Business Credit Corporation
BRG Member	Joel Goldberg	Rosenthal & Rosenthal
BRG Member	Mark Gorman	HSBC Business Credit (USA) Inc
BRG Member	Nancy Laskero	Sears, Roebuck & Company
BRG Member	John Little	Hershey Foods
BRG Member	Marie Perry	Coca Cola Enterprises Inc.
BRG Member	Diane Pruitt	SunTrust Bank
BRG Member	Ian Rogers	Cap Gemini Ernst & Young
BRG Manager	Steve Rosenberg	UCC

### 1.1.6.2 ITRG Members

Function	Name	Company / organisation
ITRG Chair		
ITRG Member		
ITRG Member		
ITRG Member		
...		

### 1.1.6.3 Task/Project Group Participants (*where applicable*)

Function	Name	Company / organisation
Participant		
Participant		
Participant		
...		

### 1.1.6.4 Design Team Members

Function	Name	Organisation
Modeller	John Ryu	UCC Business Process Modeler
XML Technical Designer		
EANCOM Technical Designer		
Peer Reviewer		

## Business Solution Design

---

### 1.2 Business Context

Context Category	Value(s)
Industry	All
Geopolitical	All
Product	All
Process	Pay
System Capabilities	All
Official Constraints	None

### 1.3 Additional Technical Requirements Analysis

#### 1.3.1 Technical Requirements (optional)

Number	Statement	Rationale
	None	



### 1.4 Business Transaction View

#### 1.4.1 Business Transaction Use Case Diagram

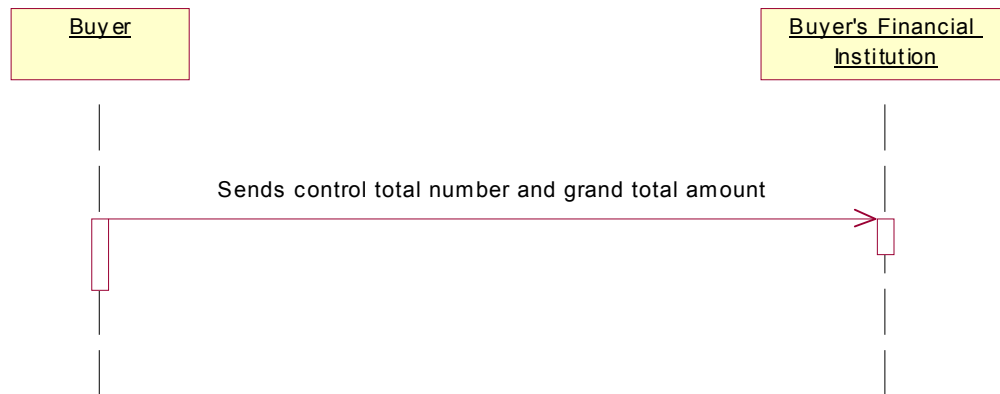
#### 1.4.2 Use Case Description

Use Case ID	UC-1							
Use Case Name	Control Totals							
Use Case Description	Buyer sends to buyer's financial institution a Control Total amount and total number of the 'Settlement of Request for Payment(s)'.							
Actors (Goal)	The two general actors in the 'Control Totals-Buyer to Buyer's Financial Institution' process are the "buyer" and the "buyer's financial institution". Depending on the specific nature of the relationship other players may have a role, such as a third party.							
Performance Goals	N/A							
Preconditions	Buyer has sent one or more 'Settlement of Request for Payment(s)' to buyer's financial institution to process.							
Post conditions	None							
Scenario	<p><b>Begins when</b> the buyer sends control total number and amount to buyer's financial institution.</p> <p><b>Continues with...</b></p> <table><tr><th>Step #</th><th>Actor</th><th>Activity Step</th></tr><tr><td>1</td><td>Buyer</td><td>Buyer sends a control totals document to the financial institution, indicating the total number of 'Settlement of Request for Payment(s)' transmitted and grand total amount sent by the buyer (payer).</td></tr></table> <p><b>Ends when</b> control total and amount is received by buyer's financial institution</p>		Step #	Actor	Activity Step	1	Buyer	Buyer sends a control totals document to the financial institution, indicating the total number of 'Settlement of Request for Payment(s)' transmitted and grand total amount sent by the buyer (payer).
Step #	Actor	Activity Step						
1	Buyer	Buyer sends a control totals document to the financial institution, indicating the total number of 'Settlement of Request for Payment(s)' transmitted and grand total amount sent by the buyer (payer).						
Alternative Scenario	None							
Related Requirements	None							
Related Rules	None							

### 1.4.3 Business Transaction Activity Diagram(s)

### 1.4.4 Business Transaction Sequence Diagram(s) (optional)

#### 1.4.4.1 Send control total number and grand total amount



## Business Solution Design

---

### 1.5 Information Model (including GDD Report)

#### 1.5.1 Data Description:

(Contains list of attributes included in the model and the related requirement which led to its inclusion in the design.)). .

CLASS (ABIE)	ATTRIBUTE (BBIE)	ASSOCIATION (ASBIE)	SECONDARY CLASS	RELATED REQUIREMENT
ControlTotal				Control Totals - Business Requirement Document Version 1.4
			ControlTotalDetail	
			Document	
		controlTotalIdentification	EntityIdentification	
		buyer	PartyIdentification	
		buyerFinancialInstitution	PartyIdentification	
ControlTotalDetail				Control Totals - Business Requirement Document Version 1.4
	amountSubmitted			
	batchIdentification			
	counter			
	transactionCountProcessed			
	workOfDate			
Document				
	contentVersion			
	creationDate			
	documentStatus			
	documentStructureVersion			
	lastUpdateDate			
EntityIdentification				
	uniqueCreatorIdentification			
		contentOwner	PartyIdentification	

## Business Solution Design

CLASS (ABIE)	ATTRIBUTE (BBIE)	ASSOCIATION (ASBIE)	SECONDARY CLASS	RELATED REQUIREMENT
PartyIdentification				
	globalLocationNumber			
			AdditionalPartyIdentification	

### 1.5.2 GDD Report :

*(Output from GDD should be pasted in this section.)*

CLASS (ABIE)	ATTRIBUTE (BBIE)	ASSOCIATION (ASBIE)	SECONDARY CLASS	Official Dictionary Entry Name	Definition	Multi- plicity
ControlTotal				Control Total. Details	ControlTotal information confirming the monetary value and count of payments to be made by the financial institution.	
			ControlTotalDetail	Control Total. Association. Control Total Line	ControlTotal information confirming the monetary value and count of payments to be made by the financial institution.	1..*
			Document	Control Total. Inheritance _ Association. Electronic _ Document		1..1
		controlTotalIdentification	EntityIdentification	Control Total. Association. Entity Identification	!! Provides a unique identification to the Control Total message.	1..1
		buyer	PartyIdentification	Control Total. Buyer. Party Identification	n.a.	1..1
		buyerFinancialInstitution	PartyIdentification	Control Total. Buyer Financial Institution. Party Identification	n.a.	1..1

## Business Solution Design

CLASS (ABIE)	ATTRIBUTE (BBIE)	ASSOCIATION (ASBIE)	SECONDARY CLASS	Official Dictionary Entry Name	Definition	Multi- plicity
ControlTotalDetail				Control Total Line. De- tails	ControlTotal information con- firming the monetary value and count of payments to be made by the financial institution.	
	amountSubmitted			Control Total Line. Sub- mitted_ Amount. Amount	Monetary value of Settlement of Request for Payment transac- tions submitted for processing for a specific work-of date.	1..1
	batchIdentification			Control Total Line. Batch Identification. Identifier	Reference identification that identifies one or more transac- tions sent by the Buyer to the Financial Institution.	0..1
	counter			Control Total Line. Counter. Integer_ Nu- meric	N/A	1..1
	transactionCount- Processed			Control Total Line. Transaction Count. Inte- ger_ Numeric	!! Count of transactions proc- essed for a specific work-of date.	1..1
	workOfDate			Control Total Line. Work Of_ Date. Date Time	The date to which the control totals refers.	1..1
Document				Electronic_ Document. Details	Used to specify basic informa- tion about the content of the message including version number; creation date and time.	

## Business Solution Design

CLASS (ABIE)	ATTRIBUTE (BBIE)	ASSOCIATION (ASBIE)	SECONDARY CLASS	Official Dictionary Entry Name	Definition	Multi- plicity
	contentVersion			Electronic_ Document. Content_ Version. Identifier	N/A	0..1
	creationDateTime			Electronic_ Document. Creation_ Date. Date Time	N/A	1..1
	documentStatus			Electronic_ Document. Status. Identifier	Indicates if the document is a copy or an original.	1..1
	documentStructureVersion			Electronic_ Document. Document Structure_ Version. Identifier	N/A	0..1
	lastUpdateDate			Electronic_ Document. Last Update_ Date. Date Time	N/A	0..1
EntityIdentification				Entity Identification. De- tails	The unique identification of a document.	

## Business Solution Design

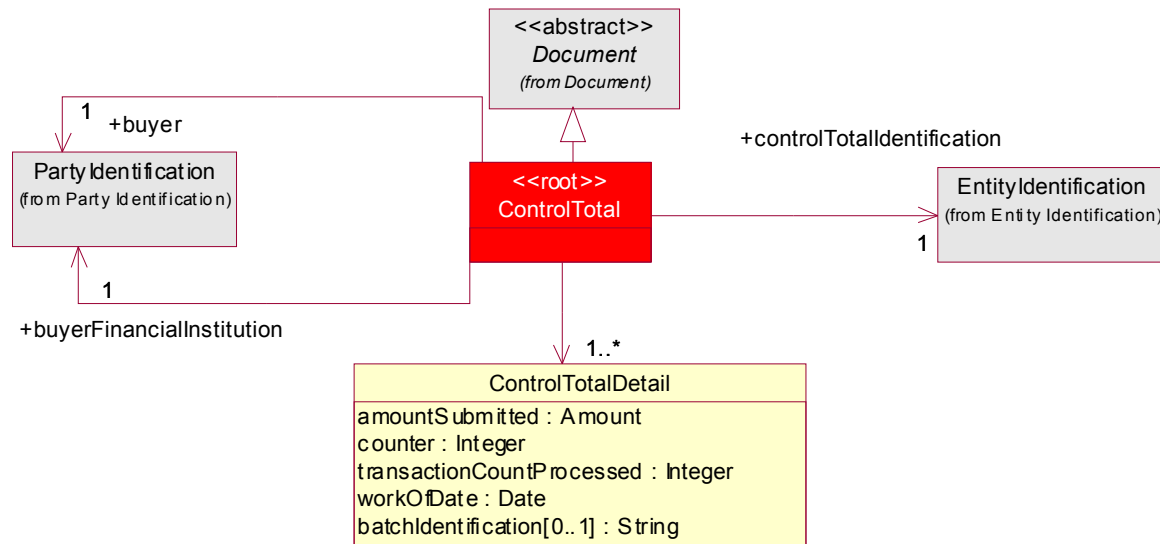
CLASS (ABIE)	ATTRIBUTE (BBIE)	ASSOCIATION (ASBIE)	SECONDARY CLASS	Official Dictionary Entry Name	Definition	Multiplicity
	uniqueCreatorIdentification			Entity Identification. Identification. Identifier	N/A	1..1
		contentOwner	PartyIdentification	Entity Identification. Content Owner. Party Identification	N/A	1..1
PartyIdentification				Party Identification. Details	Unique location number identifying the Party for which the rest of the message defines.	
	globalLocation-Number			Party Identification. Primary_ Identification. GLN_ Identifier	!! The Global Location Number (GLN) is a structured Identification of a physical location, legal or functional entity within an enterprise. The GLN is the recommended primary party identifier. Each party identified in the trading relationship must have a primary party Identification. We recommend use of GLN. However, we have allowed for use of alternate party identification for transition.	1..1
			AdditionalParty-Identification	Party Identification. Additional. Non GLN_ Party Identification	N/A	0..*

## Business Solution Design

---

### 1.5.3 Class Diagrams

#### 1.5.3.1 Control Total





## Business Solution Design

---

### 1.5.4 Code Lists

*(Output from GDD should be pasted in this section.)*

Code List Name	Code List Description
Code Name	Code Description

## Business Solution Design

---

### 1.6 Business Document Example

### 1.7 Implementation Considerations

### 1.8 Testing

#### 1.8.1 Pass / Fail Criteria

*Unit testing criteria for business solution.*

Number	Test Criteria	Related Requirement	Design Element	Pass Criteria	Fail Criteria
1	Reflects a specific business requirement from a related BRAD. For example: When goods are ordered, the buyer requires an answer from the suppliers that the order has been received.	BRAD Name.Version. Req #	Message, role, attribute	Result which determines that requirement has been satisfied: For example:  Seller is able to create and send an Order Receipt Acknowledgement.	Result which shows that requirement has not been satisfied: For example:  Buyer does not receive the Order Receipt Acknowledgement.
2					
3					

#### 1.8.2 Test Data

Attribute	Value
Attribute Name. For example "orderQuantity"	Valid value associated with the attribute. For example "5".

## Business Solution Design

---

---

### 1.9 Appendices

#### 1.10 Summary of Changes

*(Details changes to BMS for each version by BMS Section)*

Change	BMS Ver- sion	Associated CR Number
•		

### 2 XML Technical Solution ITRG Packet

The Technical Representation of the Business process is documented in a Technical Solution ITRG Packet containing all supplemental XML artefacts and is used by the Information Requirements Group (ITRG) to evaluate the solution. Upon approval from the Information Technical Requirements Group (ITRG), the Technical Solution ITRG Packet is updated to the Technical Solution Implementers Packet and published with the Business

Message Standard at:

[http://www.ean-ucc.org/global\\_smp/ean.ucc\\_standards.htm](http://www.ean-ucc.org/global_smp/ean.ucc_standards.htm).

Technical Solution ITRG Packet Content:

- Business Message Standard (BMS)
- ITRG Review Packet
  - Style Sheet: This HTML has been created using a Style Sheet that is a visual representation of the data. It is not an actual Style Sheet, but an ex-ample of what a Style Sheet may look like.
  - Instance File: The Instance File is an example of what the schema may look like when it includes live data. This can be used as comparison to a completed schema and can serve as a point of reference for development.
  - Technical Level GDD Report

Technical Solution Implementers Packet Content:

Contains all the message specific.XSD files required to implement

Example:

- AS2Envelope
- Command.xsd
- DocumentCommand.xsd
- Proxy.xsd
- ComponentLibrary.xsd

Both the Business Message Standard and the Implementers Packet are available during the ITRG Review Period in the working documents section of the ITRG eRoom:

[http://eroom.uncouncil.org/eRoom/facility/InformationTechnicalAssessmentGroupITAG/0\\_14f7](http://eroom.uncouncil.org/eRoom/facility/InformationTechnicalAssessmentGroupITAG/0_14f7)

All documents for review will be in this folder listed by name of the Change Request and Change Request Number. The Business Message Standard is not open for review, but offered as the basis for determining the suitability of the technical solutions.

This eRoom may be accessed by using the following User Name and Password:

User Name: guest

Password: guest