

# **Business Message Standard (BMS)**

**for**

**Small Package Pickup Manifest**

**BRG: Deliver**

**BMS Release: 2.0**

**Document Version: 2.0.1**

**Release Date: 31.12.2004**



### Change Request Reference

<b>Refer to Change Request (CR) Number(s):</b>	01-000066
<b>CR Submitter(s):</b>	N/A
<b>Date of CR Submission to GSMP:</b>	N/A

### Business Requirements Document (BRAD) Reference

<b>BRAD Title:</b> EAN•UCC – Business Requirements Document For “Small Package Pickup Manifest”
<b>BRAD Date:</b> 30.06.2003
<b>BRAD Version:</b> 1.3

<b>BRAD Title:</b>
<b>BRAD Date:</b>
<b>BRAD Version:</b>

### Document Summary

<b>Document Title:</b>	BMS for Deliver/Small Package Pickup Manifest
<b>Document Version</b>	2.0.1
<b>Owner:</b>	Deliver BRG
<b>Status:</b>	(Check one box) <input type="checkbox"/> DRAFT <input checked="" type="checkbox"/> Approved
<b>BMS Template Version:</b>	1.1
<b>Targeted BMS Publication Version</b>	2.0

### Document Change History

*Note: During development include revisions in history. Upon Approval, eliminate revisions and include only delta from previous version.*

Date of Change	Version	Changed By	Reason for Change	Summary of Change	Model Build #
31.12.2004	2.0.0	John Ryu	Initial Version in BMS/BSD template	Migration of BRD to standard BMS/BSD format	N/A
31.12.2004	2.0.1	Rob Toole	Added GDD information and updated class diagram		
24.04.2007	2.0.2	Giovanni Biffi	Editorial Changes	Minor Editorial Changes to the Document	N/A

# Business Message Standard

---

## Table of contents

---

Chapter	Page
<b>1 Business Solution .....</b>	<b>1</b>
1.1 Business Domain View.....	1
1.1.1 Problem Statement / Business Need.....	1
1.1.2 Objective.....	1
1.1.3 Audience.....	1
1.1.4 Artefacts .....	1
1.1.5 References .....	1
1.1.6 Acknowledgements .....	2
1.1.6.1 BRG Members .....	2
1.1.6.2 ITRG Members .....	2
1.1.6.3 Task/Project Group Participants ( <i>where applicable</i> ) .....	2
1.1.6.4 Design Team Members .....	2
1.2 Business Context .....	3
1.3 Additional Technical Requirements Analysis .....	3
1.3.1 Technical Requirements (optional).....	3
1.4 Business Transaction View .....	4
1.4.1 Business Transaction Use Case Diagram.....	4
1.4.2 Use Case Description.....	4
1.4.3 Business Transaction Activity Diagram(s) .....	5
1.4.3.1 Send Pickup Manifest.....	5
1.4.4 Business Transaction Sequence Diagram(s) (optional) .....	5
1.4.4.1 Send Pickup Manifest.....	6
1.5 Information Model (including GDD Report) .....	7
1.5.1 Data Description: .....	7
1.5.2 GDD Report : .....	17
1.5.3 Class Diagrams .....	22
1.5.3.1 Small Package Pickup Manifest .....	22
1.5.3.2 Small Package Pickup Manifest Party Information .....	23
1.5.3.3 Notification Block .....	24
1.5.4 Code Lists.....	25
1.6 Business Document Example .....	28
1.7 Implementation Considerations .....	28

**Business Message Standard**

---

Table of contents

---

1.8 Testing.....28

    1.8.1 Pass / Fail Criteria .....28

    1.8.2 Test Data .....28

1.9 Appendices.....29

1.10 Summary of Changes.....29

**2 XML Technical Solution ITRG Packet.....30**

## Business Solution Design

---

### 1 Business Solution

#### 1.1 Business Domain View

##### 1.1.1 Problem Statement / Business Need

A message is needed that can provide manifest information of all packages tendered to the carrier from the Shipper, Consignee or Third Party.

A standard pickup manifest for small packages, would provide the North American Motor Freight industry an electronic means of communicating pickup manifest information to the carrier from the shipper (also called consignor), or 3<sup>rd</sup> party.

##### 1.1.2 Objective

To supply the detail design of a Small Package Pickup Manifest business transaction needed to meet the requirements of the referenced BRAD(s).

##### 1.1.3 Audience

N/A

##### 1.1.4 Artefacts

*(List of the artefacts that are used as either an input to the process or an output from the process, also indicating the different states that the artefact takes during the process.)*

Artefact name	State	Artefact / State description

##### 1.1.5 References

Reference Name	Description
EAN•UCC – Business Requirements Document For “Small Package Pickup Manifest” Version 1.3, June 30, 2003	
Change Request Transportation AS-IS Model, Draft 1.2, July 13, 2001	
X-12 (215) Transaction Set	
Change Request #01-000066	

### 1.1.6 Acknowledgements

#### 1.1.6.1 BRG Members

Function	Name	Company / organisation
BRG Co-Chair	Doug Harness	Fleming Companies, Inc. Co-Chair
BRG Member	Regina A. De Baker	Watkins Associated Industries
BRG Member	Becky Dettling	3M Company
BRG Member	Sue Donarski	Schneider Logistics
BRG Member	K. Wayne Gingerich	Werner Enterprises
BRG Member	Stephanie Hodge-Daniels	Levi Strauss & Co.
BRG Member	Kent Jamison	Consolidated Freightways
BRG Member	Kari Melhus	Target Corporation
BRG Member	Jeff Miller	Kraft Foods, Inc.
BRG Member	Debra Noyes	Johnsonville Sausage, L.L.C.
BRG Member	Mike Osiecki	Best Buy Company, Inc.
BRG Manager	Jamie Rodriguez	UCC

#### 1.1.6.2 ITRG Members

Function	Name	Company / organisation
ITRG Chair		
ITRG Member		
ITRG Member		
ITRG Member		
...		

#### 1.1.6.3 Task/Project Group Participants (*where applicable*)

Function	Name	Company / organisation
Participant		
Participant		
Participant		
...		

#### 1.1.6.4 Design Team Members

Function	Name	Organisation
Modeller	John Ryu	UCC – Business Process Modeler
XML Technical Designer		
EANCOM Technical Designer		
Peer Reviewer		

## Business Solution Design

---

### 1.2 Business Context

*(Note: The business context of the business)*

Context Category	Value(s)
Industry	All
Geopolitical	North America
Product	All
Process	Deliver
System Capabilities	All
Official Constraints	None

### 1.3 Additional Technical Requirements Analysis

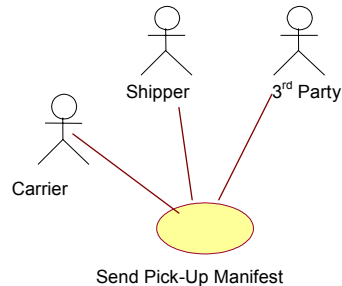
#### 1.3.1 Technical Requirements (optional)

*(User Interface, Security, Performance, Quality, etc.)*

Number	Statement	Rationale
	None	

### 1.4 Business Transaction View

#### 1.4.1 Business Transaction Use Case Diagram

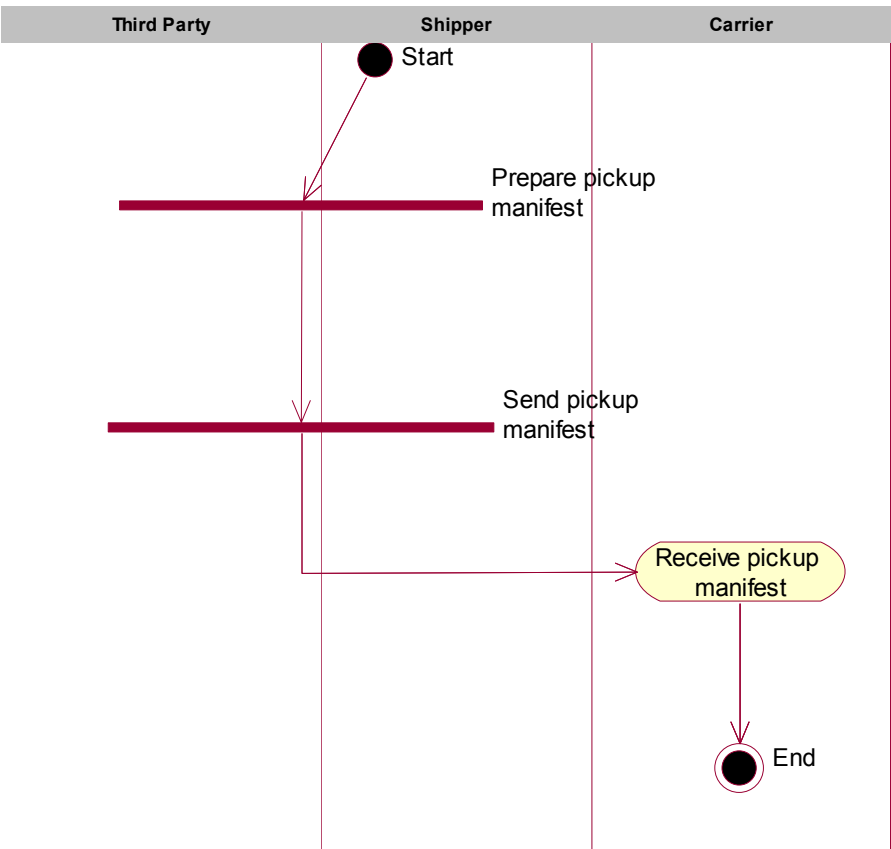


#### 1.4.2 Use Case Description

Use Case ID	UC-1										
Use Case Name	Send Pickup Manifest										
Use Case Description	Small Package Pickup Manifest is a transportation process used by the Shipper to communicate package level detail about a shipment ready for pickup by small package carrier.										
Actors (Goal)	There are two actors in this process: The Carrier and Shipper with another possible actor called 3rd Party.										
Performance Goals	N/A										
Preconditions	Business Relationship and Process Alignment established.										
Post conditions	<b>Successful end condition:</b> Receipt of manifest message by the carrier.  <b>Failed end condition:</b> Shipper cannot transmit manifest message.										
Scenario	<b>Begins when</b> the. packages are ready/or scheduled to be picked up.  <b>Continues with...</b> <table><tr><th>Step #</th><th>Actor</th><th>Activity Step</th></tr><tr><td>1</td><td>Shipper or 3rd Party</td><td>Shipper or 3rd Party prepares manifest message</td></tr><tr><td>2</td><td>Shipper or 3rd Party</td><td>Sends manifest message.</td></tr></table> <b>Ends when</b> the carrier receives manifest message.		Step #	Actor	Activity Step	1	Shipper or 3rd Party	Shipper or 3rd Party prepares manifest message	2	Shipper or 3rd Party	Sends manifest message.
Step #	Actor	Activity Step									
1	Shipper or 3rd Party	Shipper or 3rd Party prepares manifest message									
2	Shipper or 3rd Party	Sends manifest message.									
Alternative Scenario	None										
Related Requirements	None										
Related Rules	None										

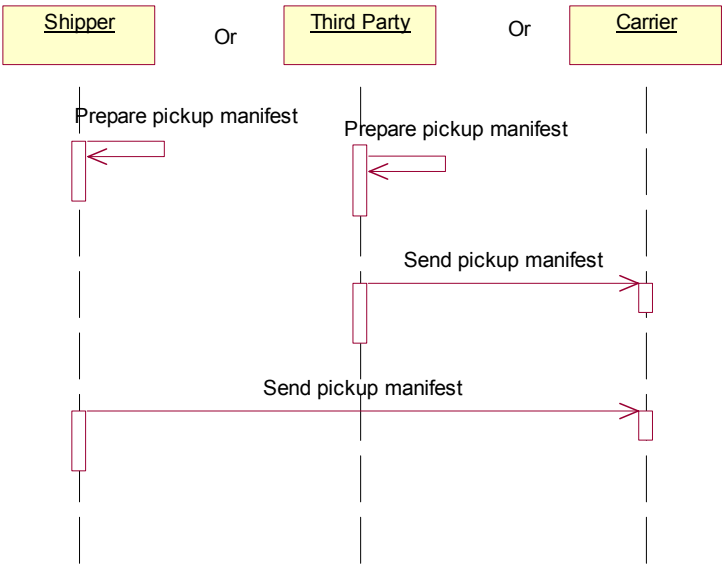
**1.4.3 Business Transaction Activity Diagram(s)**

**1.4.3.1 Send Pickup Manifest**



**1.4.4 Business Transaction Sequence Diagram(s) (optional)**

**1.4.4.1 Send Pickup Manifest**



## Business Solution Design

---

### 1.5 Information Model (including GDD Report)

#### 1.5.1 Data Description:

Class (ABIE)	Attribute (BBIE)	Association (ASBIE)	Secondary Class	Related Requirements
DeliverLocationInformation				Small Package Pickup Manifest BRD V1.3 30.06.2003
		contactInformation	Contact	Small Package Pickup Manifest BRD V1.3 30.06.2003
		None	NameAndAddress	Small Package Pickup Manifest BRD V1.3 30.06.2003
		None	PartyIdentification	Small Package Pickup Manifest BRD V1.3 30.06.2003
				Small Package Pickup Manifest BRD V1.3 30.06.2003
DeliverShipmentInformation				Small Package Pickup Manifest BRD V1.3 30.06.2003
	numberOfUnits			Small Package Pickup Manifest BRD V1.3 30.06.2003
		shipmentWeight	Measurement	Small Package

## Business Solution Design

Class (ABIE)	Attribute (BBIE)	Association (ASBIE)	Secondary Class	Related Requirements
				Pickup Manifest BRD V1.3 30.06.2003
Document				Small Package Pickup Manifest BRD V1.3 30.06.2003
	contentVersion			Small Package Pickup Manifest BRD V1.3 30.06.2003
	creationDate			Small Package Pickup Manifest BRD V1.3 30.06.2003
	documentStatus			Small Package Pickup Manifest BRD V1.3 30.06.2003
	documentStructureVersion			Small Package Pickup Manifest BRD V1.3 30.06.2003
	lastUpdateDate			Small Package Pickup Manifest BRD V1.3 30.06.2003
				Small Package Pickup Manifest BRD V1.3 30.06.2003

## Business Solution Design

Class (ABIE)	Attribute (BBIE)	Association (ASBIE)	Secondary Class	Related Requirements
EntityIdentification				Small Package Pickup Manifest BRD V1.3 30.06.2003
	uniqueCreatorIdentification			Small Package Pickup Manifest BRD V1.3 30.06.2003
		contentOwner	PartyIdentification	Small Package Pickup Manifest BRD V1.3 30.06.2003
				Small Package Pickup Manifest BRD V1.3 30.06.2003
SmallPackagePickupManifest				Small Package Pickup Manifest BRD V1.3 30.06.2003
	actualPickUpDate			Small Package Pickup Manifest BRD V1.3 30.06.2003
		smallPackagePickupManifestIdentification	EntityIdentification	Small Package Pickup Manifest BRD V1.3 30.06.2003
		shipper	ShipmentPartyInformation	Small Package Pickup Manifest BRD V1.3 30.06.2003

## Business Solution Design

Class (ABIE)	Attribute (BBIE)	Association (ASBIE)	Secondary Class	Related Requirements
		None	SmallPackagePickupManifestShipmentLevel	Small Package Pickup Manifest BRD V1.3 30.06.2003
SmallPackagePickupManifestShipmentLevel				Small Package Pickup Manifest BRD V1.3 30.06.2003
	documentType			Small Package Pickup Manifest BRD V1.3 30.06.2003
	isAveragePackageWeightIndicated			Small Package Pickup Manifest BRD V1.3 30.06.2003
	residentialType			Small Package Pickup Manifest BRD V1.3 30.06.2003
	serviceLevelType			Small Package Pickup Manifest BRD V1.3 30.06.2003
	consolidatedServiceLevelType			Small Package Pickup Manifest BRD V1.3 30.06.2003
	shipmentSpecialChargeType			Small Package Pickup Manifest BRD V1.3 30.06.2003

## Business Solution Design

Class (ABIE)	Attribute (BBIE)	Association (ASBIE)	Secondary Class	Related Requirements
		None	DeliverPaymentMethod	Small Package Pickup Manifest BRD V1.3 30.06.2003
		shipmentInformation	DeliverShipmentInformation	Small Package Pickup Manifest BRD V1.3 30.06.2003
		None	DeliverReference	Small Package Pickup Manifest BRD V1.3 30.06.2003
			SmallPackagePickupManifestPackageLevel	Small Package Pickup Manifest BRD V1.3 30.06.2003
		None	NotificationBlock	Small Package Pickup Manifest BRD V1.3 30.06.2003
				Small Package Pickup Manifest BRD V1.3 30.06.2003
DeliverPaymentMethod				Small Package Pickup Manifest BRD V1.3 30.06.2003
				Small Package Pickup Manifest BRD V1.3 30.06.2003

## Business Solution Design

Class (ABIE)	Attribute (BBIE)	Association (ASBIE)	Secondary Class	Related Requirements
SmallPackagePickupManifestPartyInformation				Small Package Pickup Manifest BRD V1.3 30.06.2003
		<<choice>> thirdPartyBillConsignee	ShipmentPartyInformation	Small Package Pickup Manifest BRD V1.3 30.06.2003
		<<choice>> alternateReturnServiceAddress	ShipmentPartyInformation	Small Package Pickup Manifest BRD V1.3 30.06.2003
		<<choice>> thirdPartyBillShipper	ShipmentPartyInformation	Small Package Pickup Manifest BRD V1.3 30.06.2003
		<<choice>> consignee	ShipmentPartyInformation	Small Package Pickup Manifest BRD V1.3 30.06.2003
		<<choice>> returnService	ShipmentPartyInformation	Small Package Pickup Manifest BRD V1.3 30.06.2003
		<<choice>> genericThirdParty	ShipmentPartyInformation	Small Package Pickup Manifest BRD V1.3 30.06.2003
ShipmentPartyInformation				Small Package Pickup Manifest BRD V1.3 30.06.2003

## Business Solution Design

Class (ABIE)	Attribute (BBIE)	Association (ASBIE)	Secondary Class	Related Requirements
	shipmentPartyAccountNumber			Small Package Pickup Manifest BRD V1.3 30.06.2003
	shipmentPartyAttention			Small Package Pickup Manifest BRD V1.3 30.06.2003
		partyInformation	DeliverLocationInformation	Small Package Pickup Manifest BRD V1.3 30.06.2003
				Small Package Pickup Manifest BRD V1.3 30.06.2003
NotificationBlock				Small Package Pickup Manifest BRD V1.3 30.06.2003
				Small Package Pickup Manifest BRD V1.3 30.06.2003
				Small Package Pickup Manifest BRD V1.3 30.06.2003
				Small Package Pickup Manifest BRD V1.3 30.06.2003

## Business Solution Design

Class (ABIE)	Attribute (BBIE)	Association (ASBIE)	Secondary Class	Related Requirements
				Small Package Pickup Manifest BRD V1.3 30.06.2003
				Small Package Pickup Manifest BRD V1.3 30.06.2003
				Small Package Pickup Manifest BRD V1.3 30.06.2003
				Small Package Pickup Manifest BRD V1.3 30.06.2003
DeliverReference				Small Package Pickup Manifest BRD V1.3 30.06.2003
				Small Package Pickup Manifest BRD V1.3 30.06.2003
SmallPackagePickupManifestPackageLevel				Small Package Pickup Manifest BRD V1.3 30.06.2003
	packagingType			Small Package Pickup Manifest BRD V1.3 30.06.2003

## Business Solution Design

Class (ABIE)	Attribute (BBIE)	Association (ASBIE)	Secondary Class	Related Requirements
	packageWeight			Small Package Pickup Manifest BRD V1.3 30.06.2003
	trackingIdentification			Small Package Pickup Manifest BRD V1.3 30.06.2003
	deliveryConfirmationType			Small Package Pickup Manifest BRD V1.3 30.06.2003
	merchandiseDescription			Small Package Pickup Manifest BRD V1.3 30.06.2003
	packageReferenceIdentification			Small Package Pickup Manifest BRD V1.3 30.06.2003
	packageSpecialChargeType			Small Package Pickup Manifest BRD V1.3 30.06.2003
	returnServiceType			Small Package Pickup Manifest BRD V1.3 30.06.2003
		None	NotificationBlock	Small Package Pickup Manifest BRD V1.3 30.06.2003

## Business Solution Design

Class (ABIE)	Attribute (BBIE)	Association (ASBIE)	Secondary Class	Related Re-requirements
		None	DeliverReference	Small Package Pickup Manifest BRD V1.3 30.06.2003
		None	PackageDimension	Small Package Pickup Manifest BRD V1.3 30.06.2003
		None	CollectOnDeliveryInformation	Small Package Pickup Manifest BRD V1.3 30.06.2003
PackageDimension				Small Package Pickup Manifest BRD V1.3 30.06.2003
CollectOnDeliveryInformation				Small Package Pickup Manifest BRD V1.3 30.06.2003
				Small Package Pickup Manifest BRD V1.3 30.06.2003

End of Report

## Business Solution Design

### 1.5.2 GDD Report :

Class (ABIE)	Attribute (BBIE)	Association (ASBIE)	Secondary Class	Official Dictionary Entry Name	Definition	Multiplicity
DeliverLocationInformation				Deliver_ Location. Details	This class originates from Deliver Common. This class has two mandatory roles of 'ship From' and 'location Information'. This class has a mandatory association to 'Name And Address' class which supplies the ship from and ship to name and address information.	
		contactInformation	Contact	Deliver_ Location. Association. Contact	N/A	0..*
		None	NameAndAddress	Deliver_ Location. Association. Party Address Group	N/A	1..1
		None	PartyIdentification	Deliver_ Location. Association. Party Identification	N/A	0..1
DeliverShipmentInformation				Shipment. Details	This class originates from Deliver Common. This class is mandatory with a role name of shipment information. (Populated from Small Package Pickup Manifest BRD, but this is not a good definition as it is specific to SPC)	
	numberOfUnits			Shipment. Units. Quantity	N/A	1..1
		shipmentWeight	Measurement	Shipment. Weight. Multi-unit Measure	N/A	1..1

## Business Solution Design

Class (ABIE)	Attribute (BBIE)	Association (ASBIE)	Secondary Class	Official Dictionary Entry Name	Definition	Multiplicity
Document				Electronic_ Document. Details	Used to specify basic information about the content of the message including version number, creation date and time.	
	contentVersion			Electronic_ Document. Content_ Version. Identifier	N/A	0..1
	creationDate			Electronic_ Document. Creation_ Date. Date Time	N/A	1..1
	documentStatus			Electronic_ Document. Status. Identifier	Indicates if the document is a copy or an original.	1..1
	documentStructureVersion			Electronic_ Document. Document Structure_ Version. Identifier	Not defined in BRD	0..1
	lastUpdateDate			Electronic_ Document. Last Update_ Date. Date Time	Not defined in BRD	0..1
EntityIdentification				Entity Identification. Details	The unique identification of a document.	
	uniqueCreatorIdentification			Entity Identification. Identification. Identifier	N/A	1..1
		contentOwner	PartyIdentification	Entity Identification. Content Owner. Party Identification	N/A	1..1
SmallPackagePickupManifest				Small Package_ Pickup Manifest. Details	N/A	
	actualPickUpDate			Small Package_ Pickup Manifest. Ac-		1..1

## Business Solution Design

Class (ABIE)	Attribute (BBIE)	Association (ASBIE)	Secondary Class	Official Dictionary Entry Name	Definition	Multiplicity
				tual Pickup_ Date. Date Time		
		smallPackagePickupManifestIdentification	EntityIdentification	Small Package_ Pickup Manifest. Association. Entity Identification	N/A	1..1
		shipper	ShipmentPartyInformation	Small Package_ Pickup Manifest. Shipper. Shipment Terms	N/A	1..1
		None	SmallPackagePickupManifest-ShipmentLevel	Small Package_ Pickup Manifest. Association. Small Package_ Shipment Level_ Pickup Manifest Line	N/A	1..*
SmallPackagePickupManifestShipmentLevel				N/A	N/A	
	documentType			N/A	N/A	1..1
	isAveragePackageWeightIndicated			N/A	N/A	1..1
	residentialType			N/A	N/A	1..1
	serviceLevelType			N/A	N/A	1..1
	consolidatedServiceLevelType			N/A	N/A	0..1
	shipmentSpecialChargeType			N/A	N/A	0..1
		None	DeliverPaymentMethod	N/A	N/A	1..1
		shipmentInformation	DeliverShipmentInformation	N/A	N/A	1..1
		None	DeliverReference	N/A	N/A	0..*
			SmallPackagePickupManifest-PackageLevel	N/A	N/A	1..*

## Business Solution Design

Class (ABIE)	Attribute (BBIE)	Association (ASBIE)	Secondary Class	Official Dictionary Entry Name	Definition	Multiplicity
		None	NotificationBlock	N/A	N/A	0..*
DeliverPaymentMethod				N/A	N/A	
SmallPackagePickupManifestPartyInformation				N/A	N/A	
		<<choice>> thirdParty-BillConsignee	ShipmentPartyInformation	N/A	N/A	1..1
		<<choice>> alternateReturnServiceAddress	ShipmentPartyInformation	N/A	N/A	1..1
		<<choice>> thirdParty-BillShipper	ShipmentPartyInformation	N/A	N/A	1..1
		<<choice>> consignee	ShipmentPartyInformation	N/A	N/A	1..1
		<<choice>> returnService	ShipmentPartyInformation	N/A	N/A	1..1
		<<choice>> generic-ThirdParty	ShipmentPartyInformation	N/A	N/A	1..1
ShipmentPartyInformation				N/A	N/A	
	shipmentPartyAccountNumber			N/A	N/A	0..1
	shipmentPartyAttention			N/A	N/A	0..1
		partyInformation	DeliverLocationInformation	N/A	N/A	1..1
NotificationBlock				N/A	N/A	
DeliverReference				N/A	N/A	
SmallPackagePickupManifestPackageLevel				N/A	N/A	1..1
	packagingType			N/A	N/A	1..1
	packageWeight			N/A	N/A	1..1
	trackingIdentification			N/A	N/A	0..1

## Business Solution Design

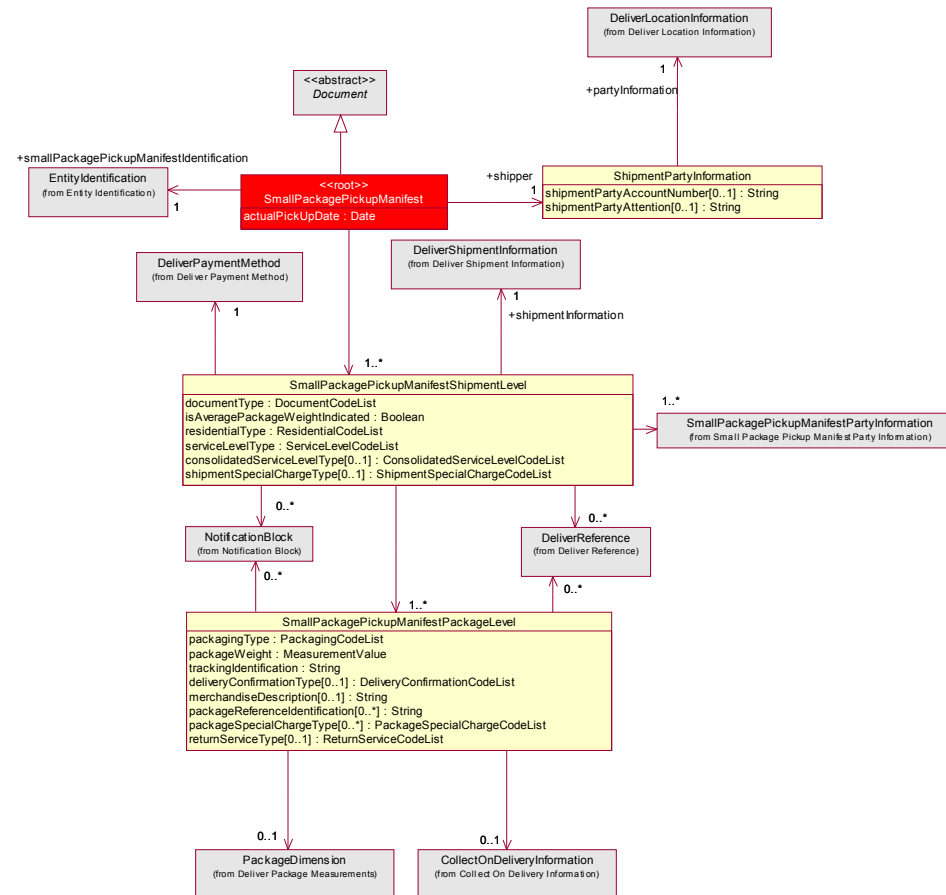
Class (ABIE)	Attribute (BBIE)	Association (ASBIE)	Secondary Class	Official Dictionary Entry Name	Definition	Multiplicity
	deliveryConfirmation-Type			N/A	N/A	0..1
	merchandiseDescription			N/A	N/A	0..*
	packageReferenceIdentification			N/A	N/A	0..*
	packageSpecialChargeType			N/A	N/A	0..*
	returnServiceType			N/A	N/A	0..1
		None	NotificationBlock	N/A	N/A	0..*
		None	DeliverReference	N/A	N/A	0..*
		None	PackageDimension	N/A	N/A	0..1
		None	CollectOnDeliveryInformation	N/A	N/A	0..1
PackageDimension				N/A	N/A	0..1
CollectOnDeliveryInformation				N/A	N/A	

End of Report

## Business Solution Design

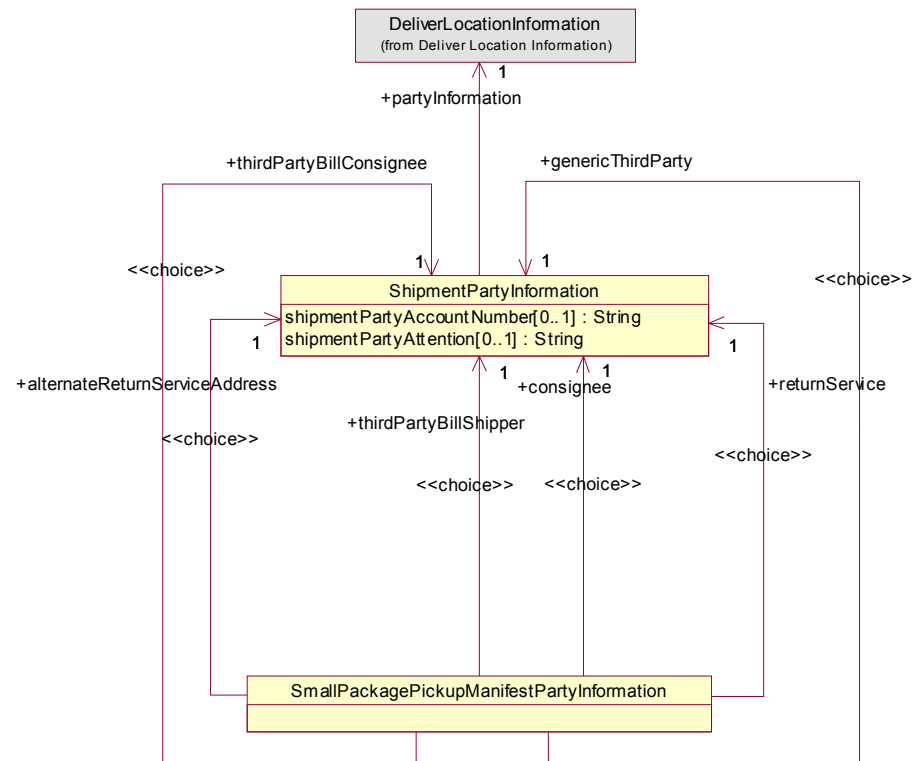
### 1.5.3 Class Diagrams

#### 1.5.3.1 Small Package Pickup Manifest



## Business Solution Design

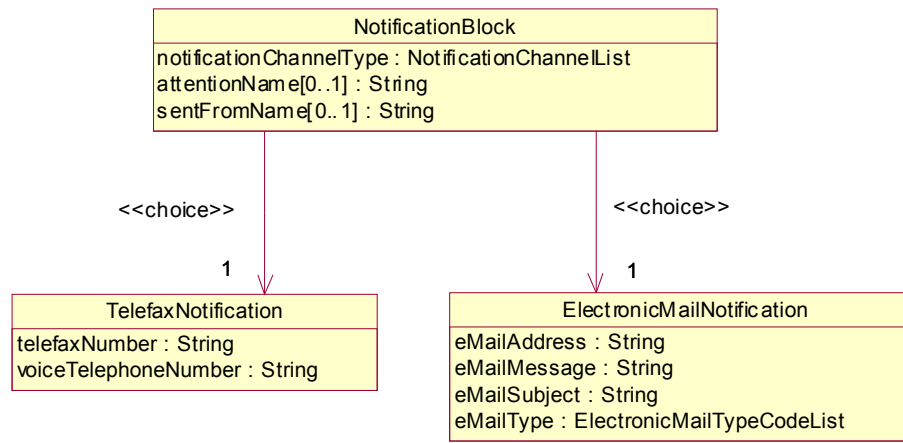
### 1.5.3.2 Small Package Pickup Manifest Party Information



## Business Solution Design

---

### 1.5.3.3 Notification Block



## Business Solution Design

---

### 1.5.4 Code Lists

(Output from GDD should be pasted in this section.)

Code List Name	Code List Description
DocumentCodeList	
Code Name	Code Description
DOCUMENT	N/A
LETTER	N/A
NON_DOCUMENT	N/A

Residential Code List (see Common BSD)

Service Level Code List (see Common BSD)

Code List Name	Code List Description
ConsolidatedServiceLevel-CodeList	
Code Name	Code Description
CONSOLIDATED_ALLOW_SINGLE_PIECE_RATING	N/A
CONSOLIDATED_MULTI_PIECE_RATING	N/A

Code List Name	Code List Description
ShipmentSpecialCharge-CodeList	
Code Name	Code Description
ONCALL_AIR	N/A
SATURDAY_DELIVERY	N/A
SATURDAY_PICKUP	N/A

## Business Solution Design

---

Code List Name	Code List Description
PackagingCodeList	
Code Name	Code Description
BOX	N/A
CUSTOMER_SUPPLIED	N/A
JUMBO	N/A
MIXED_UNKNOWN	N/A
NAME	N/A
PACKED_NOT_OTHERWISE_SPECIFIED	N/A
SPECIAL_JUMBO	N/A
TUBE	N/A
UNIT_LETTER	N/A

Code List Name	Code List Description
DeliveryConfirmationCodeList	
Code Name	Code Description
ADULT_SIGNATURE_REQUIRED	N/A
NAME_AND_DATE	N/A
SIGNATURE_AND_DATE	N/A

Code List Name	Code List Description
PackageSpecialCharge-CodeList	
Code Name	Code Description
HAZARDOUS_CARGO_CHARGE	N/A
HOLDING_CHARGE	N/A
OVERSIZED_TIER_1	N/A

## Business Solution Design

---

OVERSIZED_TIER_2	N/A
OVERSIZED_TIER_3	N/A
SPECIAL_HANDLING_SERVICE	N/A

Code List Name	Code List Description
ReturnServiceCodeList	
Code Name	Code Description
CALL_TAG	N/A
ONE_ATTEMPT	N/A
PRINT_AND_MAIL	N/A
PRINT_RETURN_LABEL	N/A
THREE_ATTEMPT	N/A

Code List Name	Code List Description
NotificationChannelList	
Code Name	Code Description
EMAIL	N/A
TELEFAX	N/A

Code List Name	Code List Description
ElectronicMailTypeCodeList	
Code Name	Code Description
ALTERNATIVE	N/A
FAILURE	N/A
REPLY_TO	N/A
REQUESTER	N/A

## Business Solution Design

---

### 1.6 Business Document Example

N/A

### 1.7 Implementation Considerations

N/A

### 1.8 Testing

#### 1.8.1 Pass / Fail Criteria

*Unit testing criteria for business solution.*

Number	Test Criteria	Related Requirement	Design Element	Pass Criteria	Fail Criteria
1	Reflects a specific business requirement from a related BRAD. For example: When goods are ordered, the buyer requires an answer from the suppliers that the order has been received.	BRAD Name.Version. Req #	Message, role, attribute	Result which determines that requirement has been satisfied: For example:  Seller is able to create and send an Order Receipt Acknowledgement.	Result which shows that requirement has not been satisfied: For example:  Buyer does not receive the Order Receipt Acknowledgement.
2					
3					

#### 1.8.2 Test Data

Attribute	Value
Attribute Name. For example "orderQuantity"	Valid value associated with the attribute. For example "5".

### 1.9 Appendices

#### 1.10 Summary of Changes

*(Details changes to BMS for each version by BMS Section)*

Change	BMS Ver- sion	Associated CR Number
Section 4.2.2 – <ul style="list-style-type: none"><li>Added “xxxxx” class to Class Diagram</li></ul>	V 0.1	CR 01-00001

### 2 XML Technical Solution ITRG Packet

The Technical Representation of the Business process is documented in a Technical Solution ITRG Packet containing all supplemental XML artefacts and is used by the Information Requirements Group (ITRG) to evaluate the solution. Upon approval from the Information Technical Requirements Group (ITRG), the Technical Solution ITRG Packet is updated to the Technical Solution Implementers Packet and published with the Business

Message Standard at:

[http://www.ean-ucc.org/global\\_smp/ean.ucc\\_standards.htm](http://www.ean-ucc.org/global_smp/ean.ucc_standards.htm).

Technical Solution ITRG Packet Content:

- Business Message Standard (BMS)
- ITRG Review Packet
  - Style Sheet: This HTML has been created using a Style Sheet that is a visual representation of the data. It is not an actual Style Sheet, but an ex-ample of what a Style Sheet may look like.
  - Instance File: The Instance File is an example of what the schema may look like when it includes live data. This can be used as comparison to a completed schema and can serve as a point of reference for development.
  - Technical Level GDD Report

Technical Solution Implementers Packet Content:

Contains all the message specific.XSD files required to implement

Example:

- AS2Envelope
- Command.xsd
- DocumentCommand.xsd
- Proxy.xsd
- ComponentLibrary.xsd

Both the Business Message Standard and the Implementers Packet are available during the ITRG Review Period in the working documents section of the ITRG eRoom:

[http://eroom.uncouncil.org/eRoom/facility/InformationTechnicalAssessmentGroupITAG/0\\_14f7](http://eroom.uncouncil.org/eRoom/facility/InformationTechnicalAssessmentGroupITAG/0_14f7)

All documents for review will be in this folder listed by name of the Change Request and Change Request Number. The Business Message Standard is not open for review, but offered as the basis for determining the suitability of the technical solutions.

This eRoom may be accessed by using the following User Name and Password:

User Name: guest

Password: guest