



Business Message Standard (BMS) Align Basic Party Synchronisation

BMS Release: 2.3, BRG Name: Align/GDSN

Issue 0.0.4, 15-Oct-2008

Document Summary

Document Item	Current Value
Document Title	Business Message Standard (BMS)
BMS Name	Align Basic Party Synchronisation
BMS Release	2.3
BRG Name	Align/GDSN
Document Number	Issue 0.0.4
Date Last Modified	15-Oct-2008
Status	Approved
Owner	
BMS Template Version	1.8

Change Request Reference

Date of CR Submission to GSMP:	CR Submitter(s):	Refer to Change Request (CR) Number(s):

Business Requirements Document (BRAD) Reference

BRAD Title:	BRD Date:	BRAD Version

Document Change History

Date of Change	Version	Changed By	Reason for Change	Summary of Change	Model Build #
19-Apr-2005	0.0.1	Eric Kauz	Initial Draft		
03-May-2005	0.0.2	Eric Kauz	Update for comments made during public review.		
10-May-2005	0.0.3	Eric Kauz	Updated for comments made during final review.	Added partyDataPool to Basic Party Registration message. Changed step 3 on UC-2	

Disclaimer

Whilst every effort has been made to ensure that the guidelines to use the GS1 standards contained in the document are correct, GS1 and any other party involved in the creation of the document HEREBY STATE that the document is provided without warranty, either expressed or implied, of accuracy or fitness for purpose, AND HEREBY DISCLAIM any liability, direct or indirect, for damages or loss relating to the use of the document. The document may be modified, subject to developments in technology, changes to the standards, or new legal requirements. Several products and company names mentioned herein may be trademarks and/or registered trademarks of their respective companies.

Table of Contents

1. Business Domain View	5
1.1. Problem Statement / Business Need	5
1.2. Objective.....	5
1.3. Audience.....	6
1.4. References	6
1.5. Acknowledgements	6
1.5.1. BRG Work Group	6
1.5.2. Task/Project Group Participants (<i>where applicable</i>).....	6
1.5.3. Design Team Members	7
2. Business Context	7
3. Additional Technical Requirements Analysis.....	8
3.1. Technical Requirements (optional).....	8
4. Business Transaction View	8
4.1. Business Transaction Use Case Diagram for Register Party	8
4.2. Use Case Description for Register Party	8
4.3. Business Transaction Activity Diagram for Register Party.....	9
4.4. Business Transaction Sequence Diagram for Register Party.....	10
4.5. Business Transaction Use Case Diagram for Change Registered Party.....	11
4.6. Use Case Definition Change Registered Party	11
4.7. Sequence Diagram Change Registered Party	12
4.8. Structured Business Scenario for Distribute Party Data from GR to Data Pool.....	13
4.9. Use Case Definition for Distribute Party Data from GR to Data Pool	13
5. Information Model (Including GDD Report)	14
5.1. Data Description:	14
5.2. GDD Report :	18
5.3. Class Diagrams	24
5.3.1. Basic Party Registration	24
5.3.2. Party Registration Response.....	25
5.3.3. Registry Party Data Dump.....	25
5.3.4. Registry Party	26
5.3.5. Registry Party Information.....	26
5.3.6. Process Capability Information.....	26
5.3.7. Classes Diagrams Found In Common BSD.....	26
5.4. Code Lists.....	27
6. Business Document Example	29
7. Implementation Considerations.....	29



8. Testing.....	29
9. Glossary	30

1. Business Domain View

1.1. Problem Statement / Business Need

Substantial effort has been made to develop a Global Data Synchronisation process because master data sharing between partners is both complex and fundamental to all supply chain processes. Integrity and timeliness of master data is critical to the flow of goods, services and information throughout the chain. Sharing data effectively and efficiently relies on access to common data definitions, data accuracy and agreement on the processes used to exchange data. This process is termed Master Data Synchronisation.

The salient points for synchronisation are:

1. synchronisation is a process
2. it is auditable
3. the process must utilize EAN•UCC industry standards
4. the data exchanged must be compliant with these standards
5. the recipient must acknowledge the integration of the data
6. continuous updates must be applied

Party information is a part of Master Data. Trading Partners involved with the Global Data Synchronisation Network (GDSN) require data regarding party (GLN) information to determine the unique identification, the role definition, the business process capability and the message capability required to function in the network defined to achieve Master Data Synchronisation.

Due to the complexities of full Party Synchronisation, there is a requirement to create an initial Basic Party Synchronisation process. The process requirements for basic party synchronisation within the Global Data Synchronisation Network should include:

- Load and Update Party Data within the Global Registry
- Manage Party Data in the Global Registry
- Distribute Party Data

The data requirements for synchronisation of Party information within the Global Data Synchronisation Network for basic party synchronisation should include:

- GLN as mandatory choice for Party Identification
- At least one role of Party as mandatory, allowing additional roles

At least one business process identification (party role) and one Message Identification used to define the capability of the party.

1.2. Objective

To supply the detail design of the (specific) business transaction needed to meet the requirements specified in the BRAD for Align_Basic Party Sync. To populate the GS1 Global Registry and report to data pools and their registered trading partners up to date data source party information. .Audience

1.3. Audience

The audience of this standard is any participant in the global supply chain. This includes retailers, manufacturers, service providers and other third parties.

1.4. References

Reference Name	Description
BRAD For Align_Basic_Party_Synchronisation V 0.0.4	Business Requirements Analysis Document for Basic Party Synchronisation

1.5. Acknowledgements

The following is a list of individuals (and their companies) who participated in the creation, review and approval of this BMS.

1.5.1. BRG Work Group

Function	Name	Company / organisation
BRG Chair	Jim Funk	SC Johnson
BRG Member	Bruce Hawkins	Wal-Mart
BRG Member	Hideki Ichihara	DCC Japan
BRG Member	Tan Jin Soon	EAN Singapore
BRG Member	Eric Kauz	GS1
BRG Member	Grant Kille	WWRE
BRG Member	Sean Lockhead	UCCNet
BRG Member	Brad Papietro	Wegmans
BRG Member	Peter Porri	Coca-Cola
BRG Member	Nadine Radomski	Dean Foods
BRG Member	William Rosenfeld	Sterling Commerce
BRG Member	Karen Spooner	Kraft
BRG Member	Gina Tomassi	Pepsi Cola
BRG Member	Chrystopher Vantine	Global eXchange Services
BRG Member	Steve Vazzano	Transora

1.5.2. Task/Project Group Participants (*where applicable*)

Function	Name	Company / organisation
Participant	Sian Blackwell	Ocean Spray
Participant	Tom Duffy	TDLinx
Participant	Michael Genoitt	Florida's Natural Growers
Participant	Joan Gietman	Kimberly Clark

Function	Name	Company / organisation
Participant	Aaron Gottlieb	Daymon Worldwide
Participant	Lydia Henry	Hampton Affiliate
Participant	Ron Herman	Publix
Participant	Roxanne Hogendorn	Alberstons
Participant	Melanie Kudela	GS1
Participant	Richard Reinwart	Anheuser-Busch
Participant	Patrick Roy	UCCnet
Participant	Mike Sadiwnyk	ECC Canada
Participant	Don Swensen	Advance Sales and Marketing
Participant	Wayne Swogger	The Drummond Group
Participant	Milan Vacval	JDA
Participant	Ian Verhaegan	Click Commerce
Participant	Greg Zwanziger	Supervalu

1.5.3. Design Team Members

Function	Name	Organisation
Modeller	Eric Kauz	GS1
XML Technical Designer	Dipan Anarkat	GS1
EANCOM Technical Designer		
Peer Reviewer	John Ryu	GS1

2. Business Context

Context Category	Value(s)
Context Category	Value(s)
Industry	All
Geopolitical	All
Product	All
Process	Align_Basic Party Synchronisation
System Capabilities	EAN.UCC
Official Constraints	None

3. Additional Technical Requirements Analysis

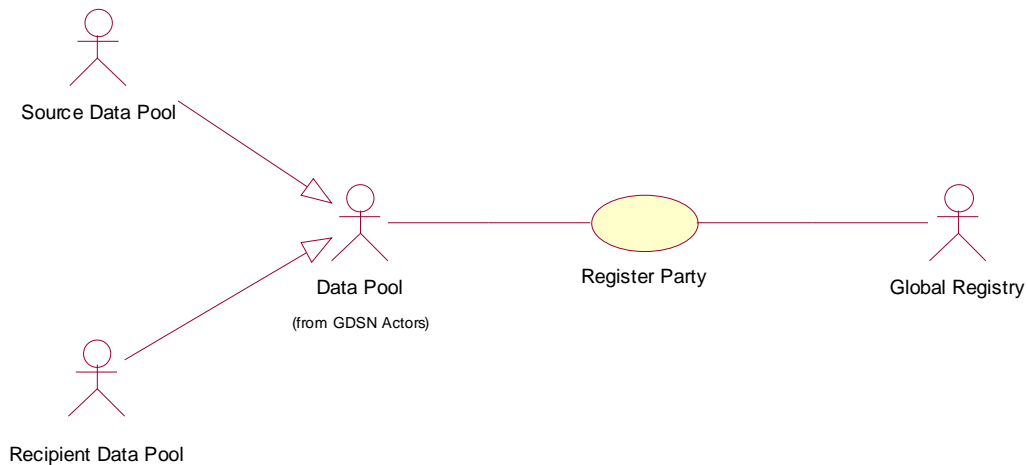
This section documents the analysis of additional technical requirements.

3.1. Technical Requirements (optional)

Number	Statement	Rationale

4. Business Transaction View

4.1. Business Transaction Use Case Diagram for Register Party



4.2. Use Case Description for Register Party

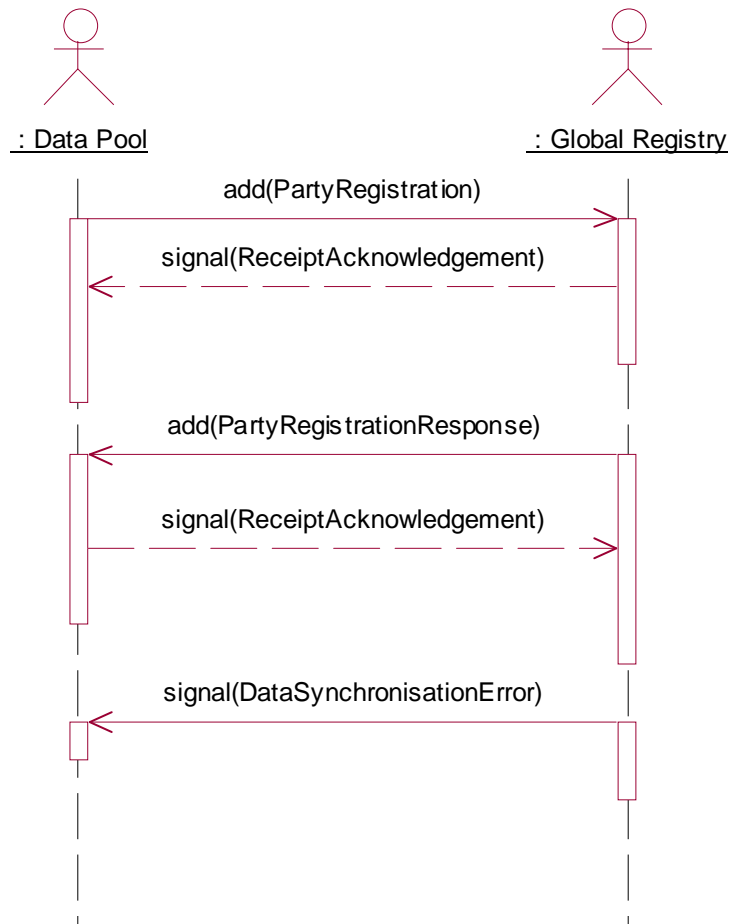
Use Case ID	UC-1
Use Case Name	Register Party
Use Case Description	Prior to registration, the party data must pass validations at the data pool and a uniqueness check at the Registry. The Global Registry ensures that valid, unique party data is available within the Global Data Synchronisation Network and that all valid GDSN parties must be registered in the Global Registry. This Use Case describes the registration process that is performed by the Global Registry.
Actors (Goal)	Data Pool (Source Data Pool or Recipient Data Pool) Global Registry (GR)
Performance Goals	Data Pool: To have validated, registered Party data. Global Registry: To ensure valid, unique Party data is registered.
Preconditions	The data pool is a certified. The data pool has a profile that resides in the registry.
Post conditions	The party data has been registered and retained by the Global Registry.
Scenario	Begins when. the Global Registry receives validated Party Data from a data pool.

	Continues with...		
	Step #	Actor	Activity Step
	1	GR	ensures that the data pool is certified
	2	GR	verifies the uniqueness of the GLN.
	3	GR	stores the party data
Ends when... The Global Registry sends a registration response to the data pool.			
Alternative Scenario	ad 1. Data Pool not certified:		
	1.1 The GR sends an error message to the data pool		
	1.2 Ends when, the data pool receives the error message.		
	ad 2 The party already exists in the GR:		
	2.1 GR sends an error message to the data pool.		
	2.2 The data pool receives the error message.		
Related Requirements	1		
Related Rules	1	The secondaryGovernmentArea (e.g. State, Province, Department) must be populated in the Party Name and Address if the country associated with the address has a secondaryGovernmentArea.	
	2	The data pool submitting the Basic Party Registration message populates the isPartyActive flag in the GR through the Basic Party Registration message.	

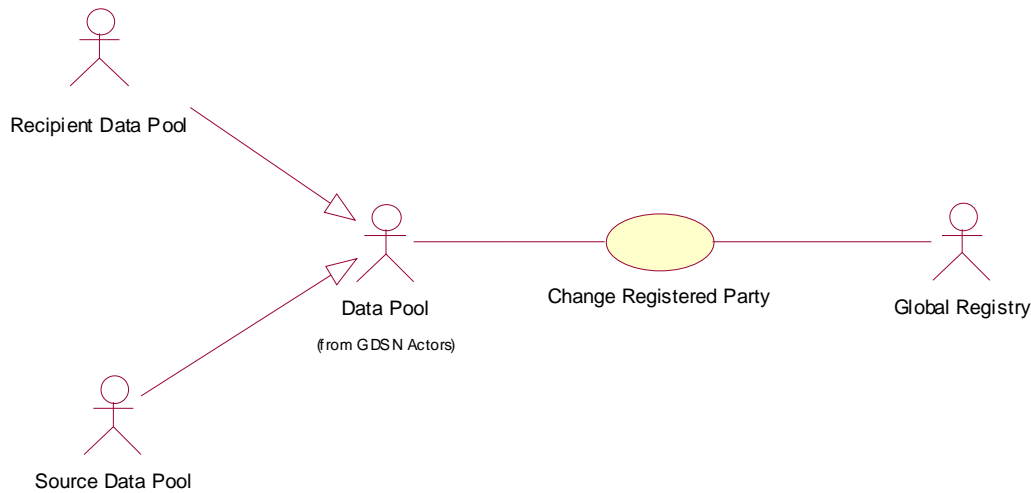
4.3. Business Transaction Activity Diagram for Register Party

None

4.4. Business Transaction Sequence Diagram for Register Party



4.5. Business Transaction Use Case Diagram for Change Registered Party

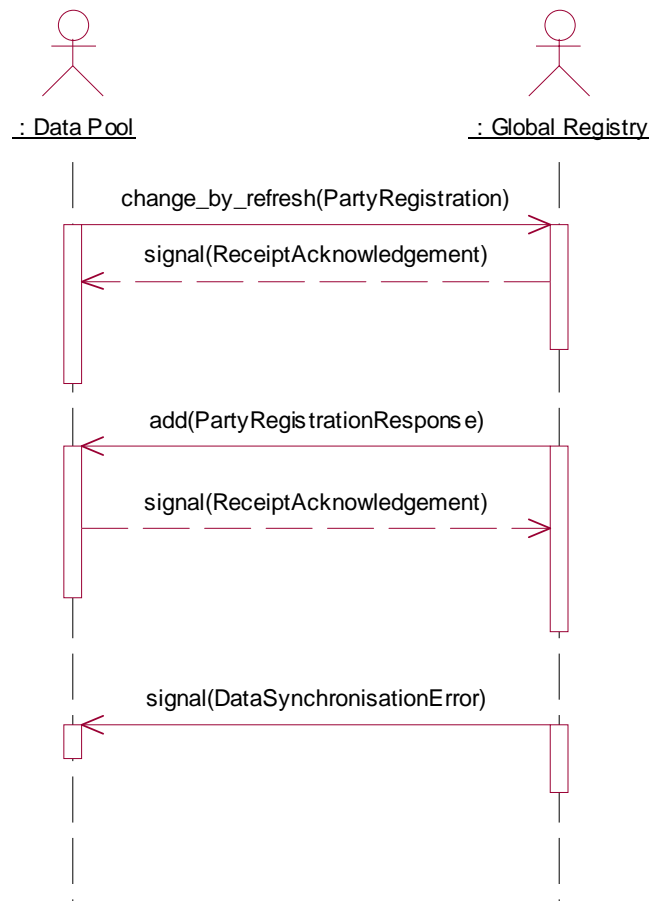


4.6. Use Case Definition Change Registered Party

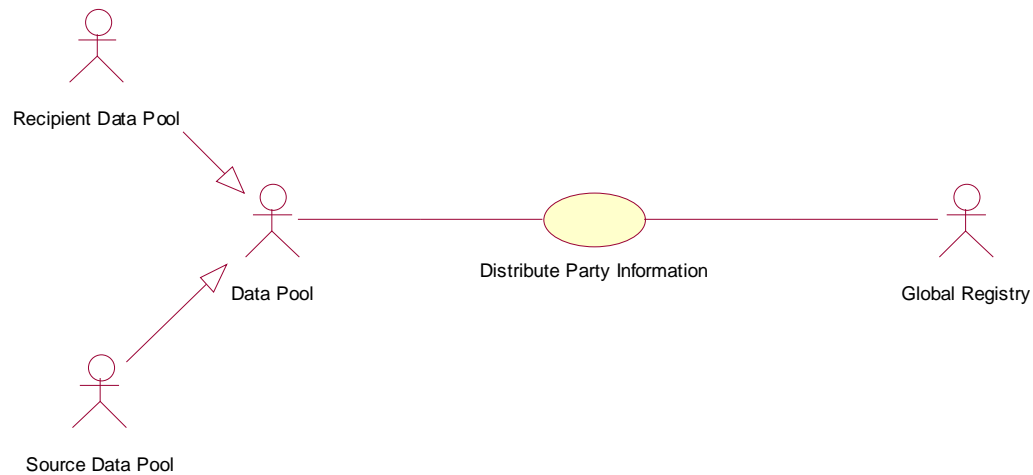
Use Case ID	UC-2		
Use Case Name	Change Registered Party		
Use Case Description	In the event that party data changes in a data pool, the changes must be reflected in the Global Registry.		
Actors (Goal)	Data Pool (Source Data Pool or Recipient Data Pool) Global Registry (GR)		
Performance Goals	Data Pool: To have validated, registered Party data. Global Registry: To ensure valid, unique Party data is registered.		
Preconditions	The data pool is certified. The data pool has a profile that resides in the registry. The data pool has received a “Change Registered Party” message from their trading partner. The data pool has validated party data received and has sent that Party data to the Global Registry. The Party data has been previously registered.		
Post conditions	The party data changes have been applied and retained in the Global Registry.		
Scenario	Begins when. the Global Registry receives a validated Change Registered Party message from a data pool. Continues with...		
	Step #	Actor	Activity Step
	1	GR	ensures that the data pool is certified.
	2	GR	validates the party data from the data pool.
	3	GR	ensures that the party data already exists in the Global Registry and that the transmittingParty (GLN) of the Basic Party Registration Change equals the partyDataPool GLN on the party record in the Global Registry.
	4	GR	updates the party data.
	Ends when... The Global Registry sends a registration response to the data pool.		

Alternative Scenario	ad 1. Data Pool not certified: 1.1. The GR sends an error message to the data pool. Ends when, the data pool receives the error message ad 2. The Party data does not exist in the GR: GR sends an error message to the data pool Ends when, the data pool receives the error message					
Related Requirements	<table><tr><td>1</td><td></td></tr></table>		1			
1						
Related Rules	<table><tr><td>1</td><td>The transmittingParty (GLN) of the Basic Party Registration Change equals the partyDataPool GLN on the party record in the Global Registry.</td></tr><tr><td>2</td><td>The informationProviderOfParty GLN cannot be changed through a Change Registered Party message.</td></tr></table>		1	The transmittingParty (GLN) of the Basic Party Registration Change equals the partyDataPool GLN on the party record in the Global Registry.	2	The informationProviderOfParty GLN cannot be changed through a Change Registered Party message.
1	The transmittingParty (GLN) of the Basic Party Registration Change equals the partyDataPool GLN on the party record in the Global Registry.					
2	The informationProviderOfParty GLN cannot be changed through a Change Registered Party message.					

4.7. Sequence Diagram Change Registered Party



4.8. Structured Business Scenario for Distribute Party Data from GR to Data Pool



4.9. Use Case Definition for Distribute Party Data from GR to Data Pool

Use Case ID	UC-4						
Use Case Name	Distribute Party Information						
Use Case Description	This use case describes the process of sending party information from the Global Registry to the data pool (DP)						
Actors (Goal)	Data Pool (Source Data Pool or Recipient Data Pool) Global Registry (GR)						
Performance Goals	Data Pool: To receive updated and validated party data from the Global Registry. Global Registry: To send updated, validated and registered party data.						
Preconditions							
Post conditions	Data Pool has received Party Data.						
Scenario	Begins when...the GR sends party data to DP via AS2.						
	Continues with...						
	<table border="1"> <thead> <tr> <th>Step #</th><th>Actor</th><th>Activity Step</th></tr> </thead> <tbody> <tr> <td>1</td><td>DP</td><td>receives the party data.</td></tr> </tbody> </table>	Step #	Actor	Activity Step	1	DP	receives the party data.
Step #	Actor	Activity Step					
1	DP	receives the party data.					
	Ends when...the data pool filters the Party Data to validate Party Data.						
Alternative Scenario	Not Applicable						
Related Requirements	Not Applicable						
Related Rules	Not Applicable						

5. Information Model (Including GDD Report)

5.1. Data Description:

Class (ABIE)	Attribute (BBIE)	Association (ASBIE)	Secondary Class	Related Requirement
BasicPartyRegistration				BRAD For Align_Basic_Party_Synchronisation V 0.0.4
	transmittingDataPool			BRAD For Align_Basic_Party_Synchronisation V 0.0.4
	partyDataPool			BRAD For Align_Basic_Party_Synchronisation V 0.0.4
		None	Document	BRAD For Align_Basic_Party_Synchronisation V 0.0.4
		basicPartyRegistrationIdentification	EntityIdentification	BRAD For Align_Basic_Party_Synchronisation V 0.0.4
		None	RegistryParty	BRAD For Align_Basic_Party_Synchronisation V 0.0.4
		None	ProcessCapabilityInformation	BRAD For Align_Basic_Party_Synchronisation V 0.0.4
PartyRegistrationInformation				BRAD For Align_Basic_Party_Synchronisation V 0.0.4
	lastChangedDate			BRAD For Align_Basic_Party_Synchronisation V 0.0.4
	registrationDate			BRAD For Align_Basic_Party_Synchronisation V 0.0.4
	removedDate			BRAD For Align_Basic_Party_Synchronisation V 0.0.4
PartyRegistrationResponse				BRAD For Align_Basic_Party_Synchronisation V 0.0.4
	partyReference			BRAD For Align_Basic_Party_Synchronisation V 0.0.4

Class (ABIE)	Attribute (BBIE)	Association (ASBIE)	Secondary Class	Related Requirement
		None	PartyRegistrationInformation	BRAD For Align_Basic_Party_Synchronisation V 0.0.4
		None	Response	BRAD For Align_Basic_Party_Synchronisation V 0.0.4
ProcessCapabilityInformation				BRAD For Align_Basic_Party_Synchronisation V 0.0.4
	processCapabilityCode			BRAD For Align_Basic_Party_Synchronisation V 0.0.4
	processCapabilityEffectiveStartDateTime			BRAD For Align_Basic_Party_Synchronisation V 0.0.4
	ProcessCapabilityEffectiveEndDateTime			BRAD For Align_Basic_Party_Synchronisation V 0.0.4
Class (ABIE)	Attribute (BBIE)	Association (ASBIE)	Secondary Class	Related Requirement
RegistryPartyDataDump				BRAD For Align_Basic_Party_Synchronisation V 0.0.4
	informationProvider			BRAD For Align_Basic_Party_Synchronisation V 0.0.4
	informationRecipient			BRAD For Align_Basic_Party_Synchronisation V 0.0.4
		None	Document	BRAD For Align_Basic_Party_Synchronisation V 0.0.4
		registryPartyDataDumpIdentification	EntityIdentification	BRAD For Align_Basic_Party_Synchronisation V 0.0.4
		None	RegistryPartyDataDumpDetail	BRAD For Align_Basic_Party_Synchronisation V 0.0.4
				BRAD For Align_Basic_Party_Synchronisation V 0.0.4
RegistryPartyDataDumpDetail				BRAD For Align_Basic_Party_Synchronisation V 0.0.4
		None	RegistryParty	BRAD For Align_Basic_Party_Synchronisation V 0.0.4

Class (ABIE)	Attribute (BBIE)	Association (ASBIE)	Secondary Class	Related Requirement
		None	ProcessCapabilityInformation	BRAD For Align_Basic_Party_Synchronisation V 0.0.4
		None	RegistryPartyDates	BRAD For Align_Basic_Party_Synchronisation V 0.0.4
				BRAD For Align_Basic_Party_Synchronisation V 0.0.4
RegistryPartyDates				BRAD For Align_Basic_Party_Synchronisation V 0.0.4
	registeringParty			BRAD For Align_Basic_Party_Synchronisation V 0.0.4
	registrationDateTime			BRAD For Align_Basic_Party_Synchronisation V 0.0.4
	lastUpdateParty			BRAD For Align_Basic_Party_Synchronisation V 0.0.4
	lastUpdateDateTime			BRAD For Align_Basic_Party_Synchronisation V 0.0.4
RegistryPartyNameAndAddress				BRAD For Align_Basic_Party_Synchronisation V 0.0.4
	associatedLanguage			BRAD For Align_Basic_Party_Synchronisation V 0.0.4
	city			BRAD For Align_Basic_Party_Synchronisation V 0.0.4
	countryCode			BRAD For Align_Basic_Party_Synchronisation V 0.0.4
	name			BRAD For Align_Basic_Party_Synchronisation V 0.0.4
	pOBoxNumber			BRAD For Align_Basic_Party_Synchronisation V 0.0.4
	postalCode			BRAD For Align_Basic_Party_Synchronisation V 0.0.4
	secondaryGovernmentArea			BRAD For Align_Basic_Party_Synchronisation V 0.0.4

Class (ABIE)	Attribute (BBIE)	Association (ASBIE)	Secondary Class	Related Requirement
	streetAddressOne			BRAD For Align_Basic_Party_Synchronisation V 0.0.4
	streetAddressTwo			BRAD For Align_Basic_Party_Synchronisation V 0.0.4
				BRAD For Align_Basic_Party_Synchronisation V 0.0.4
PartyIdentification				BRAD For Align_Basic_Party_Synchronisation V 0.0.4
	globalLocationNumber			BRAD For Align_Basic_Party_Synchronisation V 0.0.4
		None	AdditionalPartyIdentification	BRAD For Align_Basic_Party_Synchronisation V 0.0.4
				BRAD For Align_Basic_Party_Synchronisation V 0.0.4
RegistryPartyInformation				BRAD For Align_Basic_Party_Synchronisation V 0.0.4
			partyRoleInformation	BRAD For Align_Basic_Party_Synchronisation V 0.0.4
		None	Contact	BRAD For Align_Basic_Party_Synchronisation V 0.0.4
		None	NameAndAddress	BRAD For Align_Basic_Party_Synchronisation V 0.0.4
				BRAD For Align_Basic_Party_Synchronisation V 0.0.4
partyRoleInformation				BRAD For Align_Basic_Party_Synchronisation V 0.0.4
	partyOrDepartmentName			BRAD For Align_Basic_Party_Synchronisation V 0.0.4
	partyRole			BRAD For Align_Basic_Party_Synchronisation V 0.0.4
RegistryParty				BRAD For Align_Basic_Party_Synchronisation V 0.0.4

Class (ABIE)	Attribute (BBIE)	Association (ASBIE)	Secondary Class	Related Requirement
	isPartyActive			BRAD For Align_Basic_Party_Synchronisation V 0.0.4
		informationProviderOfParty	PartyIdentification	BRAD For Align_Basic_Party_Synchronisation V 0.0.4
		None	RegistryPartyInformation	BRAD For Align_Basic_Party_Synchronisation V 0.0.4
RegistryParty				BRAD For Align_Basic_Party_Synchronisation V 0.0.4
	isPartyActive			BRAD For Align_Basic_Party_Synchronisation V 0.0.4

5.2. GDD Report :

Basic Party Registration

Class (ABIE)	Attribute (BBIE)	Association (ASBIE)	Secondary Class	Official Dictionary Entry Name	Definition	Multiplicity
BasicPartyRegistration						
	transmittingDataPool				The data pool that is transmitting the party information to the Global Registry.	1..1
	partyDataPool				The Global Location Number of the data pool responsible for registering the party record in the GS1 Global Registry.	1..1
		None	Document		None	1..1
		basicPartyRegistration Identification	EntityIdentification		None	1..1
		None	RegistryParty		None	1..1

Class (ABIE)	Attribute (BBIE)	Association (ASBIE)	Secondary Class	Official Dictionary Entry Name	Definition	Multiplicity
		None	ProcessCapabilityInformation		None	1..*

Party Registration Response

Class (ABIE)	Attribute (BBIE)	Association (ASBIE)	Secondary Class	Official Dictionary Entry Name	Definition	Multiplicity
PartyRegistrationInformation						
	lastChangedDate				Not Available	1..1
	registrationDate				Not Available	1..1
	removedDate				Not Available	0..1
PartyRegistrationResponse						
	partyReference					1..1
		None	PartyRegistrationInformation		None	1..1
		None	Response		None	1..1

CL: Process Capability Information

Class (ABIE)	Attribute (BBIE)	Association (ASBIE)	Secondary Class	Official Dictionary Entry Name	Definition	Multiplicity
ProcessCapabilityInformation						
	processCapabilityCode				Not Available	1..1
	processCapabilityEffectiveStartDateTime				Not Available	1..1
	ProcessCapabilityEffectiveEndDateTime				Not Available	0..1

Registry Party Data Dump

Class (ABIE)	Attribute (BBIE)	Association (ASBIE)	Secondary Class	Official Dictionary Entry Name	Definition	Multiplicity
RegistryPartyDataDump						
	informationProvider				The Global Location Number of the originator of the data. This could either be a data source or a data recipient.	1..1
	informationRecipient				Party which is authorized to view, use, download a set of Master Data provided by an Information Provider.	1..1
		None	Document		None	1..1
		registryPartyDataDumpIdentification	EntityIdentification		None	1..1
		None	RegistryPartyDataDumpDetail			1..*
RegistryPartyDataDumpDetail						
		None	RegistryParty		None	1..1
		None	ProcessCapabilityInformation		None	1..*
		None	RegistryPartyDates		None	1..1
RegistryPartyDates						
	registeringParty				The GLN of the data pool responsible for creating the party record in the GS1 Global Registry.	1..1

Class (ABIE)	Attribute (BBIE)	Association (ASBIE)	Secondary Class	Official Dictionary Entry Name	Definition	Multiplicity
	registrationDateTime				The date and time when the party record is initiated / created in the GS1 Global Registry.	1..1
	lastUpdateParty				The Global Location Number of the data pool responsible for modifying / updating the party record in the GS1 GR.	0..1
	lastUpdateDateTime				The date and time when the party record is modified/ updated in the GS1 GR.	0..1

Registry Party Information

Class (ABIE)	Attribute (BBIE)	Association (ASBIE)	Secondary Class	Definition	Multiplicity
RegistryPartyNameAndAddress				Information on a party's name and address.	
	associatedLanguage			An attribute in the Address which provides a textual identification of the party's Language description of physical location. It is presented as an ISO Code 639.	0..*
	city			Free form text for city name.	1..1
	countryCode			ISO Country Code associated with consignee address.	1..1
	name			The textual identification of the party.	1..1
	pOBoxNumber			Not Available	0..1
	postalCode			Code defining international postal zone code.	0..1
	secondaryGovernmentArea			Free form text for providing State/Province/Department of party address.	0..1
	streetAddressOne			Not Available	0..1

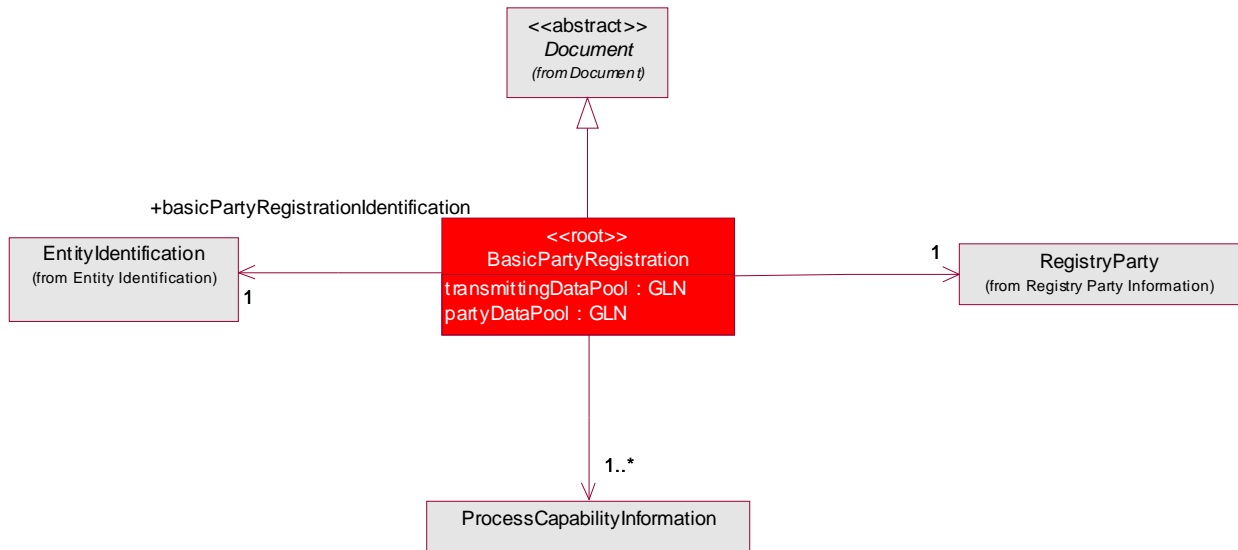
Class (ABIE)	Attribute (BBIE)	Association (ASBIE)	Secondary Class	Definition	Multiplicity
	streetAddressTwo			Not Available	0..1
PartyIdentification				Unique location number identifying the Party for which the rest of the message defines.	
	globalLocationNumber			The Global Location Number (GLN) is a structured Identification of a physical location, legal or functional entity within an enterprise. The GLN is the primary party identifier. Each party identified in the trading relationship must have a primary party Identification.	1..1
		None	AdditionalPartyIdentification	None	0..*
RegistryPartyInformation				This class contains all party related information as described in this section.	
			partyRoleInformation		1..*
		None	Contact	None	1..*
		None	NameAndAddress	None	1..1
partyRoleInformation				None	
	partyOrDepartmentName			The name of the party or department associated with the party role.	1..1
	partyRole			An attribute which defines the relationships of the Party.	1..1

Registry Party

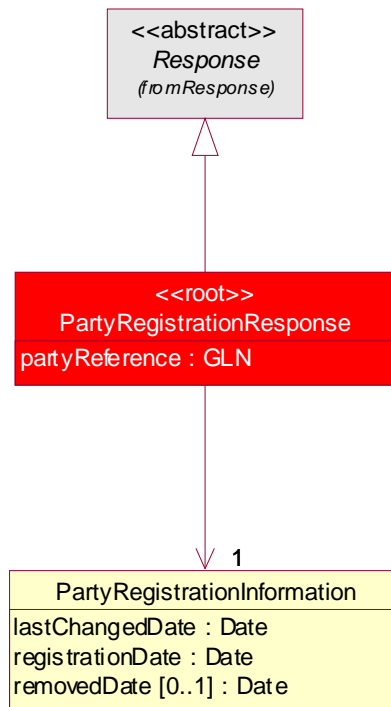
Class (ABIE)	Attribute (BBIE)	Association (ASBIE)	Secondary Class	Definition	Multiplicity
RegistryParty					
	isPartyActive			A Boolean field used to express whether the party is active or inactive used for tracking billing.	1..1
		informationProviderOfParty	PartyIdentification	The party identification of the party who owns the party data.	1..1
		None	RegistryPartyInformation	None	1..1

5.3. Class Diagrams

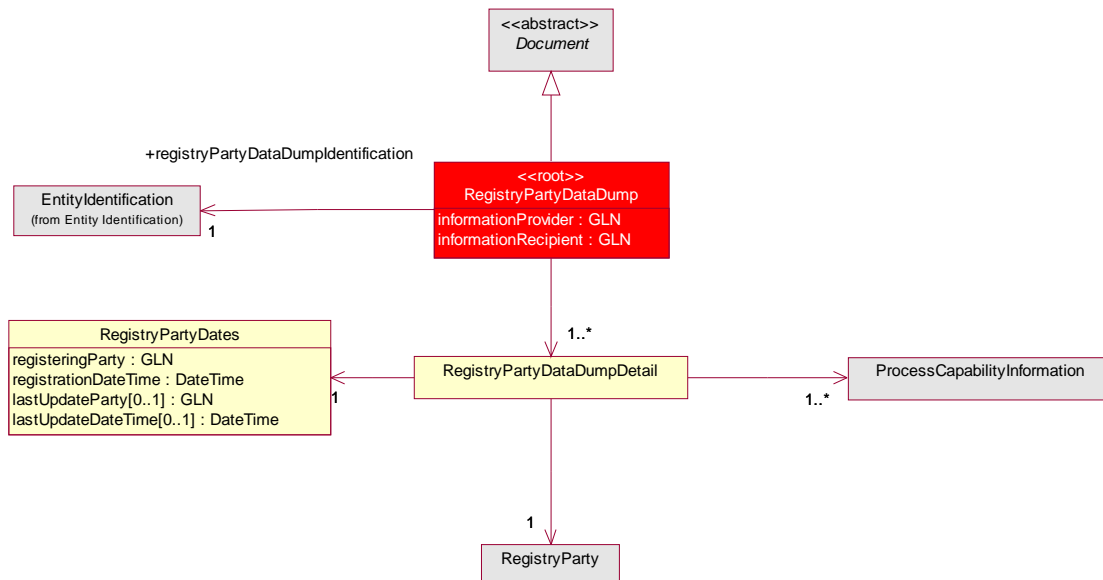
5.3.1. Basic Party Registration



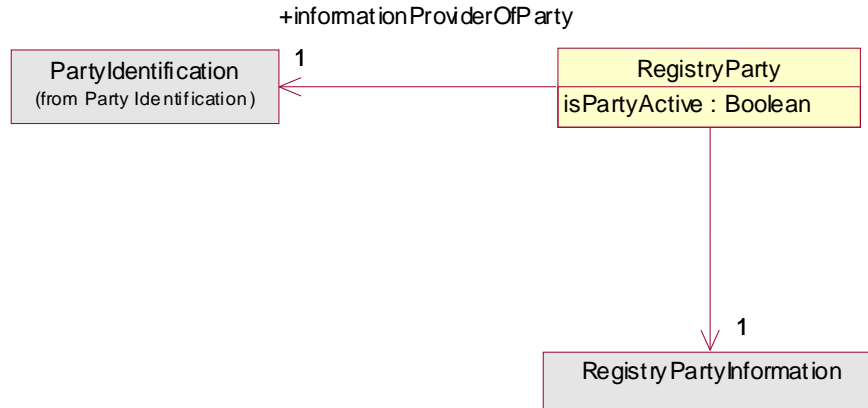
5.3.2. Party Registration Response



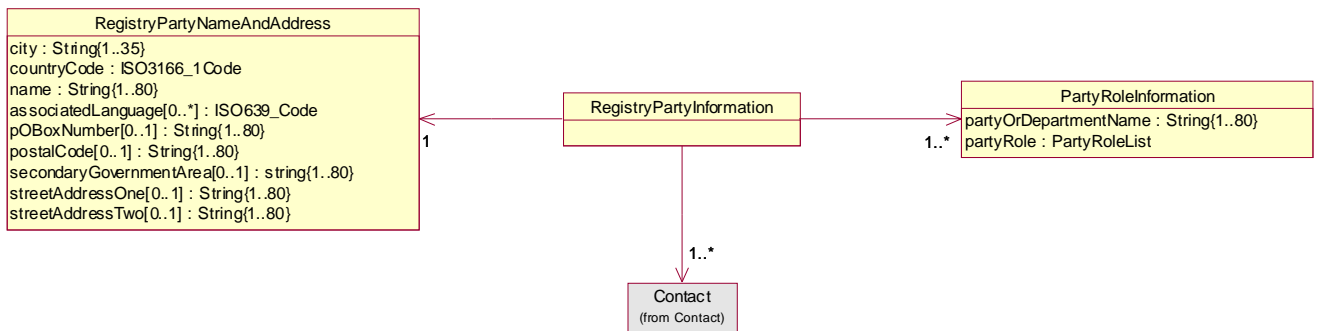
5.3.3. Registry Party Data Dump



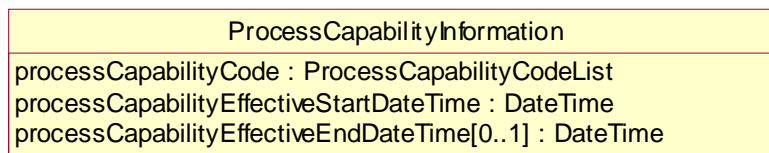
5.3.4. Registry Party



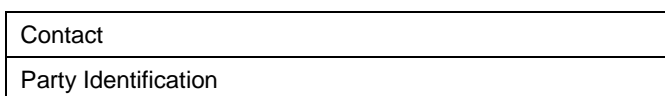
5.3.5. Registry Party Information



5.3.6. Process Capability Information



5.3.7. Classes Diagrams Found In Common BSD



5.4. Code Lists

Code List Name	Code List Description
Additional Party Identification	
Code Name	Code Description
BUYER_ASSIGNED_IDENTIFIER_FOR_A_PARTY	N/A
DEA_DRUG_ENFORCEMENT_AGENCY	N/A
DUNS	N/A
DUNS_PLUS_FOUR	N/A
HIN_CANADIAN_HEALTHCARE_IDENTIFICATION_NUMBER	N/A
SCAC	N/A
SELLER_ASSIGNED_IDENTIFIER_FOR_A_PARTY	N/A
SIRET	N/A
TD_LINK_TRADE_DIMENSIONS	N/A
UCC_COMMUNICATION_IDENTIFICATION	N/A
UN_LOCATION_CODE	N/A
UNKNOWN	N/A
USDA_ESTABLISHMENT_NUMBER	N/A

Code List Name	Code List Description
Party Role List	
Code Name	Code Description
BILL_TO	Party which receives goods and invoice
BROKER_AGENT	A person who buys or sells for another entity without having title to the property.
BUYER	Party to which merchandise is sold.
CARRIER	A company, which physically transports goods from one place to another.
CONSUMER	The end user of a trade item or a service.
CORPORATE_IDENTITY	Identity of the party to whom all other parties of the same commercial organization are linked.
DELIVERY_PARTY	Party to which goods are delivered.
DISTRIBUTOR	An entity which purchases and takes title to goods which are then resold / redistributed elsewhere.
FACTOR	Purchaser of accounts receivable.

Code List Name	Code List Description
FREIGHT_FORWARDER	A person or firm that arranges for a pick up or deliver goods by a carrier on instructions of a shipper or consignee from or to a point by various necessary conveyances and common carriers.
INFORMATION_PROVIDER	The Party providing the information contained in the document.
INVOICEE	Party to whom an invoice is issued
ISSUER_OF_INVOICE	Party which issues an invoice.
LOGISTICS_SERVICE_PROVIDER	An umbrella term for an entity, which provides a combination of many different logistics services for another entity.
MANUFACTURING_PLANT	Industrial department of a company in which goods are manufactured with appropriate equipment and fittings
MARK_FOR	Indicates the ultimate party or destination such as when cross docking you would mark for the store number to be distributed and delivered.
MESSAGE_FROM	Party where the message comes from.
MESSAGE_RECIPIENT	Party receiving the message.
OPERATING_DIVISION	An entity that is part of another entity. For example, a Regional Marketing Office. Operating Divisions may have multiple days and times of operation.
OPERATOR	A person or persons who own or operate a business establishment, which services consumers directly. For example a restaurant owner as part of a chain or an independent operation.
PARTY_TO_RECEIVE_COMMERCIAL_INVOICE	Party to whom payment for a commercial invoice or bill should be remitted.
PAYEE	Party, which receives payment.
PAYER	Party, which initiates payment.
PUBLIC_WAREHOUSE	A building, or a part of one, where storage space is offered to other companies for compensation (fee), for the storage of their goods, merchandise, etc.
REMIT_TO	Party to whom funds are directed for payment of a commercial invoice.
SELLER	Party, which sells products or services to a buyer.
SHIP_FROM	Party from where goods will be or have been shipped.
SHIP_TO	Party, which receives goods and invoices.
STORE	A physical entity that sells trade items to a consumer.
SUPPLIER	Party, which provides service(s) and/or manufactures or otherwise has possession of goods and consigns or makes them available in trade.
WAREHOUSE_AND_OR_DEPOT	Industrial department of a company equipped with appropriate equipment and fittings in which goods are stored in appropriate conditions.

Code List Name	Code List Description
Process Capability Code	
Code Name	Code Description
DATA_SYNCHRONISATION	N/A

6. Business Document Example

Not Applicable

7. Implementation Considerations

Not Applicable

8. Testing

This section describes the testing criteria for business solutions.

Attribute	Value
isPartyActive	true
partyOrDepartmentName	Shipping
partyRole	DISTRIBUTOR
city	Atlanta
countryCode	123
languageOfTheParty	en
name	Mondial Distribution
pOBoxNumber	15
postalCode	07654
secondaryGovernmentArea	Georgia
streetAddressOne	1 Peachtree Avenue
streetAddressTwo	Suite 911
registeringParty	0012345000010
registrationDateTime	2006-12-31T10:00:00.000
processCapabilityCode	DATA_SYNCHRONISATION

9. Glossary

Term	Description
Additional Party Identification Number.	Same as EAN.UCC XML Party Identification Additional Identification. An identifier that allows a progression of existing id's that may be used to identify organizations (for example in the U.S. companies frequently use Duns+4, Retailer Assigned Store #, etc. to identify locations)
Additional Party Identification Number Type	Same as EAN.UCC XML Party Identification Additional Party Identifier Type.
City	An attribute in the Address which provides a textual identification of the party's City description of physical location.
Communication Channel Code	The identifiers used for communicating with a party, for example, their telephone number, email address, physical address etc.
Contact Number	The primary telephone number for a party's contact.
Contact Email	The e-mail address for a party's contact.
Country Code	An attribute in the Address which provides a textual identification of the party's Country Code description of physical location. It is presented as a 3-digit ISO Code 3166-1.
Information Provider GLN	The Global Location Number of the originator of the data. This could either be a data source or a data recipient.
Language	An attribute in the Address which provides a textual identification of the party's Language description of physical location. It is presented as an ISO Code 639.
Party	A business entity.
Party Name	The textual identification of the party.
Party Role	An attribute which defines the relationships of the Party.
Postal Code	An attribute in the Address which provides a textual identification of the party's Postal Code description of physical location.
Primary Contact Name	Attributes which identify and detail the textual identification of a person name or department name and their communication channels. There could be one or more for a party.
Registration Date	The date and time when the party record is initiated / created in the GS1 GR.
Secondary Government Area	Free form text for providing State/Province/Department of party address.
Street Address	An attribute in the Address which provides a textual identification of the party's street description of physical location.