



Tactical steps for hospital implementation

Justin Bitter
Bernhoven Hospital
the Netherlands



Justin Bitter MSc



- Medical- and business administration background
- Manager Operating Rooms at Bernhoven Hospital, the Netherlands
- Member of the GS1 Healthcare Leadership Team since July 2014



The journey of traceability

1. The need for traceability for hospitals
2. Searching for help
3. Exploring opportunities
4. Selection process
5. Decision-making process
6. Implementation
7. First use of scanning barcodes

The need for traceability



Improving patient safety

- *Recall procedure*
- *Waste of time: search/find process*
- *One uniform process for the supply chain*
- *Risc of counterfeiting*
- *Risc of missing needed materials*

The need for traceability

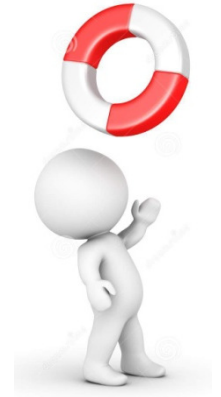


Creating efficiency in cost management

- *Amplifying balance sheet of the hospital*
- *Reduction of stock levels (25%)*
- *Reduction of expired products (80%)*
- *Lowering high indirect costs of staff*

Searching for help...

- *Where to start?*
- *Where to go?*
- *Who should be involved?*







Exploring opportunities



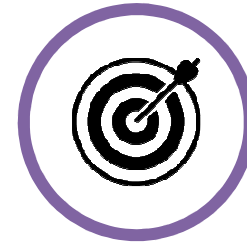
- Determine the main problem(s) you want to improve in your processes

Solutions by scanning are:

- GS1
- HIBCC
- ISBT 128 (ICCBBA)



The selection process



- Which IT-infrastructure is there already in the hospital?
- 1D/2D scanners
- Are interfaces easy to build (businesscase!)
- How to work with GS1 and non-GS1 compliant items?

The decision-making process

- ❖ Start underpinning the need with a quick scan (10-15 days in total)
- ❖ At first, involve members of the board
- ❖ Take a decision based on a business case (ROI) including the output of the quick scan
- ❖ Take care of the promises of the business case and measure.....



Implementation



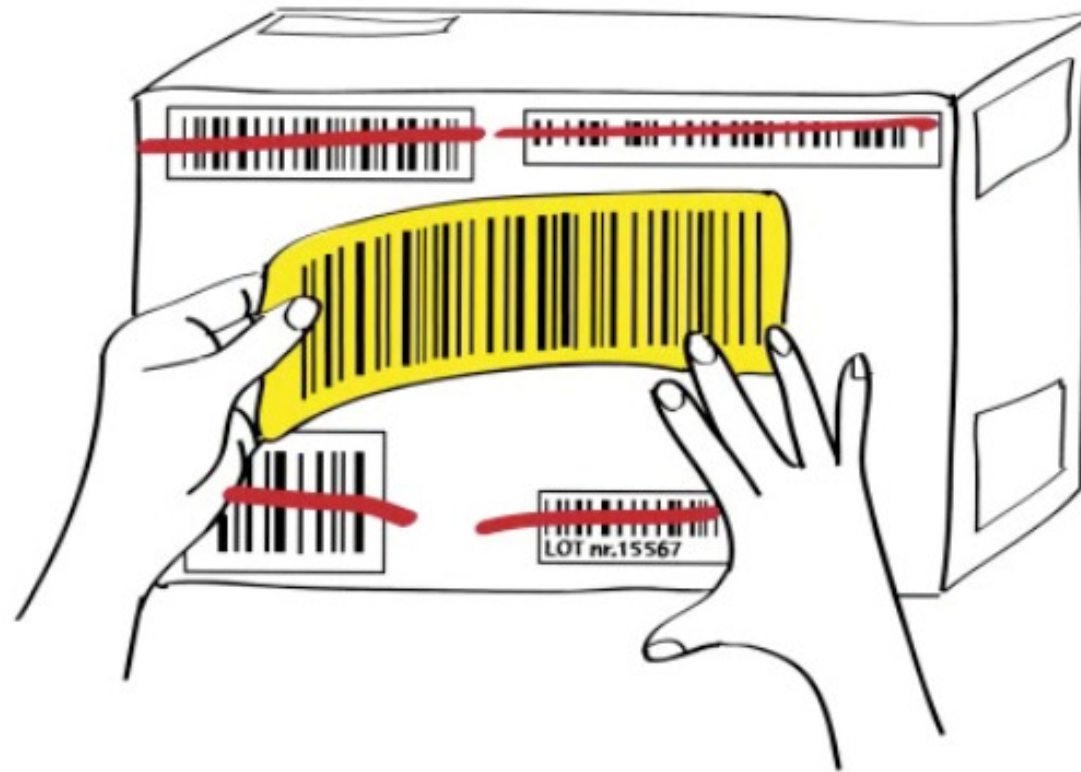
- ✓ Involve your employees (engagement!)
- ✓ Secure training and facilitate!
- ✓ Start at only one department at a time (first progress some results)
- ✓ Make use of evaluations and monitor continuously!
- ✓ Check the (technical) conformance of GS1



First use of scanning barcodes

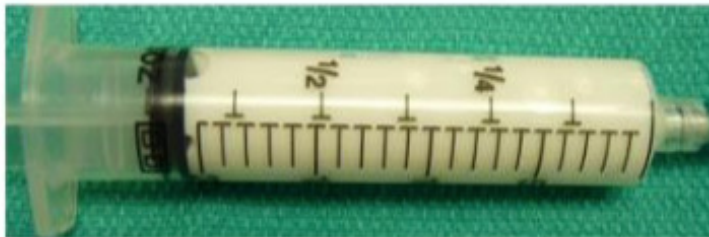
- Kick-off meeting with the team
- Explain abbreviations!! (GTIN, GLN etc)
- Training users before start (link supermarket)
- Support on the workplace
- Facilitate and listen to your staff
- Celebrate successes!

Bernhoven Hospital, The Netherlands

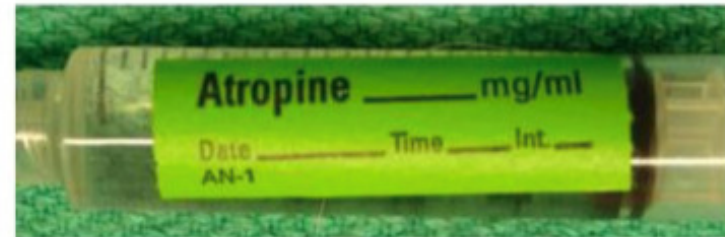


Medical devices (OR- and Radiology Department)

High Risk Medication in the OR *-proof of concept-*



(A) No Labeling Elements



(B) Name Only



(C) Propofol without Expiration



(D) JC Compliant

The chosen solution during the proof of concept



**Patiëntveiligheid
omhoog, kosten
omlaag**

Stappenplan implementatie GS1-traceerbaarheid – ziekenhuizen
6 november 2013 versienummer 001



samen **werkt**



The Global Language of Business

GS1 Healthcare Reference Book 2015-2016

Successful implementations of GS1 standards



GS1 Healthcare Reference Book 2015-2016



The Netherlands



Bernhoven: the first dutch hospital with a unique barcode on all medical devices

Bernhoven is the first hospital in the Netherlands that operates according to the GS1 Global Traceability Standard for Healthcare. An extensive international audit has shown that the hospital has a unique GS1 barcode on each medical device in the operating room (OR). The result is complete traceability, from the time a product enters the hospital to the point of use, thus improving patient safety and supply chain efficiency. All of this is accomplished via the support and cooperation of all stakeholders throughout the chain within the hospital, from management to purchasing, finance and IT departments.

By Justin Bitter and Erik van Ark



bernhoven

Background

Improving patient safety and adequate management were the motives for starting a project on traceability in Bernhoven, a 380-bed hospital located in Uden, The Netherlands. The goal was to achieve 100 % visibility in the internal process flow for medical devices, including better management of product recalls, improved inventory management and reduced manual processes.

Bernhoven decided first to focus on traceability of medical devices in the operating room (OR), starting with orthopaedic implants, because 40 % of medical products used at Bernhoven support this specialty. Orthopaedic implants are also characterised by a high value; showing quick results was important to lower any institutional resistance to implementing standards and provide confidence to all stakeholders of the potential benefits of traceability.



Hospital staff checking status of medical devices on internal database

Next, Bernhoven started implementing the traceability process in the instrument sterilisation department and on high-risk medication in the OR.

As a starting point, Bernhoven used the business case "Patient Safety and Efficiency at the OR" (2012) which demonstrated that the investments had a return of investment within one year. This convinced the Board of Directors of Bernhoven as well as other management and key personnel

29

Hospital implementations



THANKS

