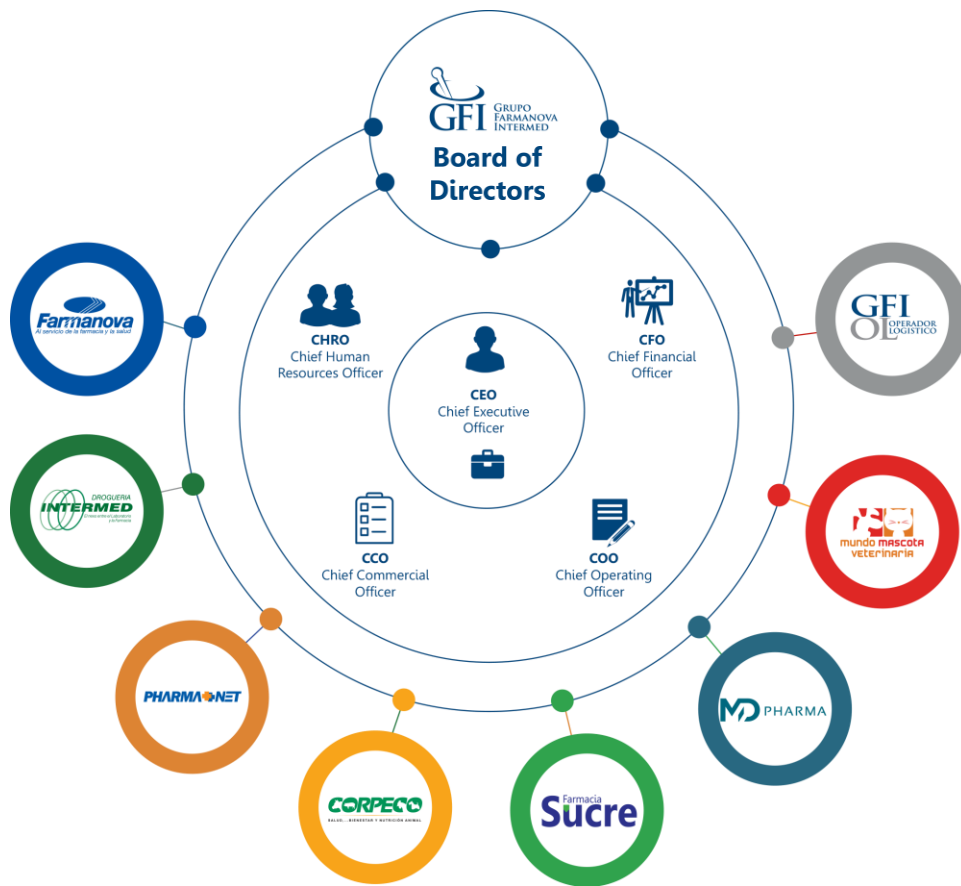











Automatization of traceability through GS1



Who is GFI?



B.U	Activity	Channel	Market
   35 years old    25 years old    17 years old	Distribution	Pharma	Private and Public (CR)
 35 years old	Retail	Pharma	Private (CR)
 1 year old	Retail	Veterinary	Private (CR)
 9 years old	Sales representation, licensing, marketing, regulatory affairs	Pharma	Private and Public (CA)
 9 years old	Logistics	Pharma	Private and Public (CA)

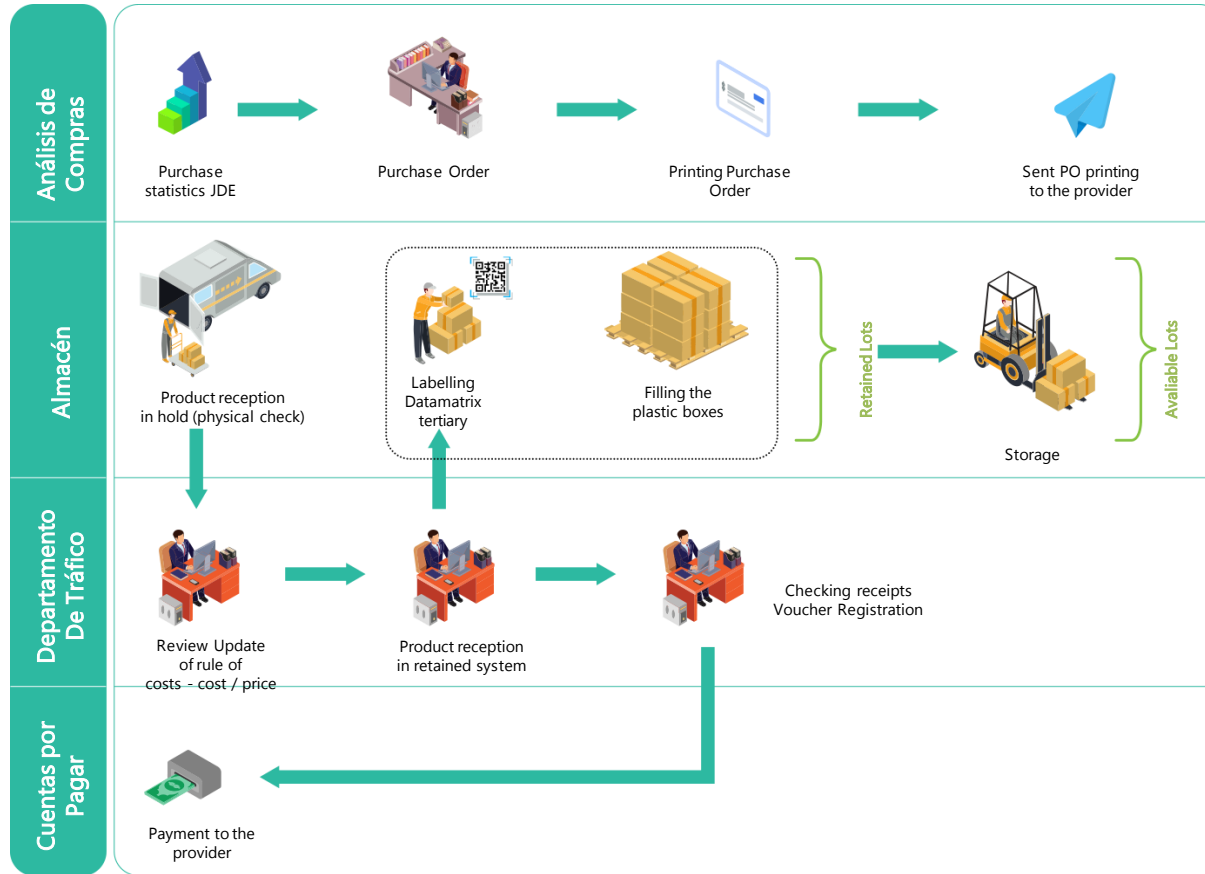


## Logistics infrastructure

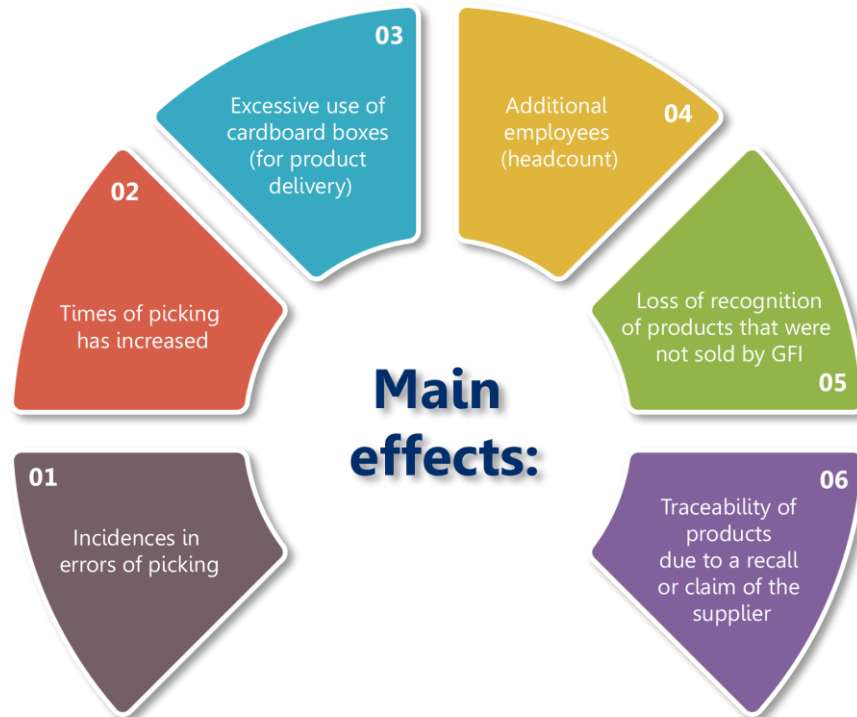
- Two specialized warehouse centers with more than 20k mts<sup>2</sup>
- Warehouse capacity for more than 1,800 daily orders
- 22 daily routes
- Separated demand routing system for institutional and medical specialties
- Only Local Distributor with reusable packaging
- 99% coverage in Costa Rica and 7 countries in Central America and Caribbean



# Supply Chain Process



Due to the growth experienced by our company, the process of storage and distribution was suffering some inefficiencies and deterioration in the level of service.







# 1

## Solution

**Automate the process of storage and distribution with technology and international standards:**

- a -Handhelds
- b- Reusable plastic boxes
- c- Conveyor belts
- d- Dynamic locations
- e- GS1 standards applied:

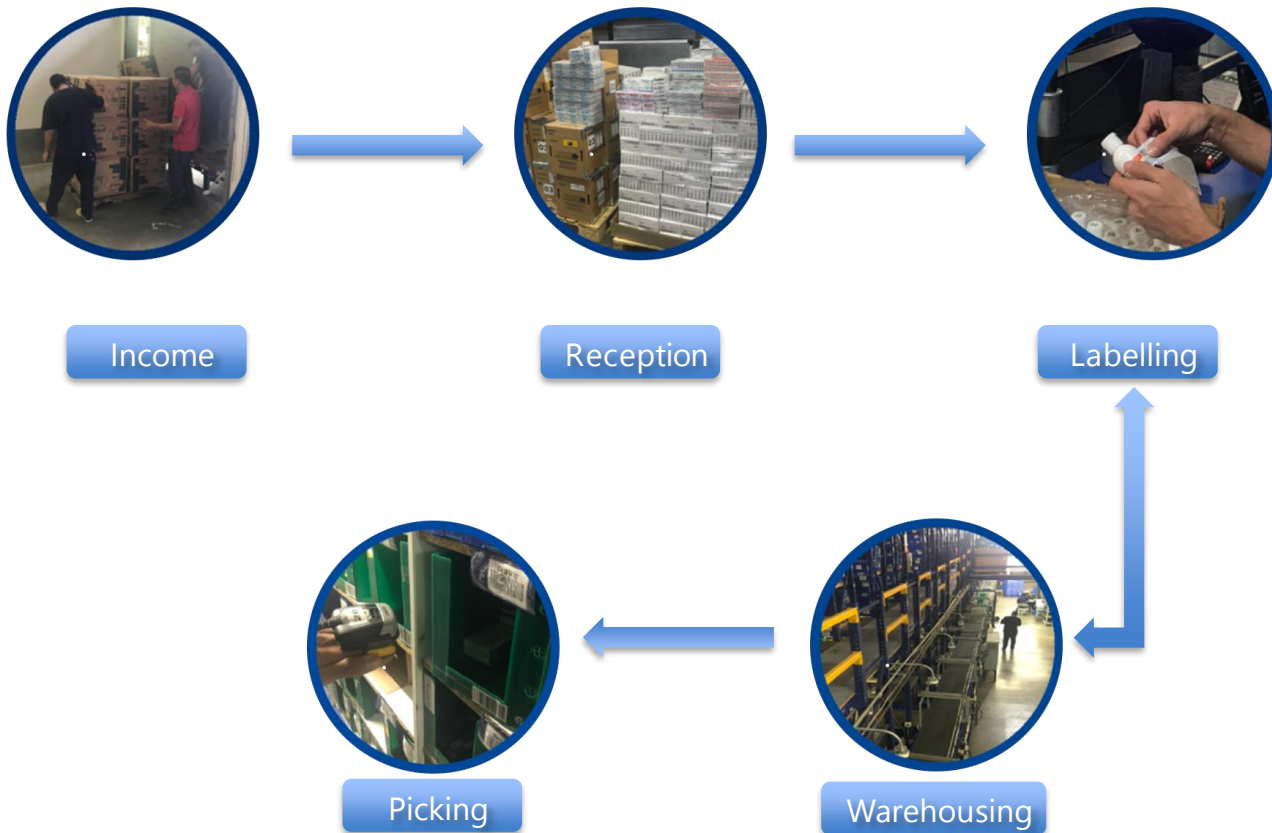
- GTIN: global trade item number
- SGTIN: global product serial number
- EAN/GS1-128: linear barcode
- GS1 Data Matrix: two-dimensional barcode
- EDI: Electronic Data Interchange

## Solution

**Implement specific solutions to segment the process:**

# 2

- Receipt of goods: datamatrix, EAN-13 and handhelds
- Warehousing: reusable plastic boxes, barcode, datamatrix, conveyor belts and dynamic locations
- Picking: handhelds, reusable plastic boxes and barcode
- Distribution: handhelds, reusable plastic boxes and barcode
- Control of inventories: handhelds





**1**  
**Quantitative**  
**benefits:**

Saving of 350kg  
of plastic bags  
and more than  
6,000 cartons  
per month

Savings of  
15 employees  
(checking and  
packing)

Decrease in the  
incidence  
of picking error  
(from 6%  
to 0.6%)

Avoid products  
recognition that  
were not sold  
by GFI

Time decrease  
of physic control  
of inventories  
(70% reduction)

Picking time  
decrease  
(at least 20%)

## 2

### Qualitative benefits:

-  Better control of inventories
-  Compliance with local and international regulation
-  Traceability throughout the chain
-  Significant reduction of reprocesses
-  Help the environment
-  Improvement in control processes
-  Optimization of physical storage space
-  Projection of the company offering the service of Logistics Operator



The implementation of GS1 standards combined with technology allow us to:



