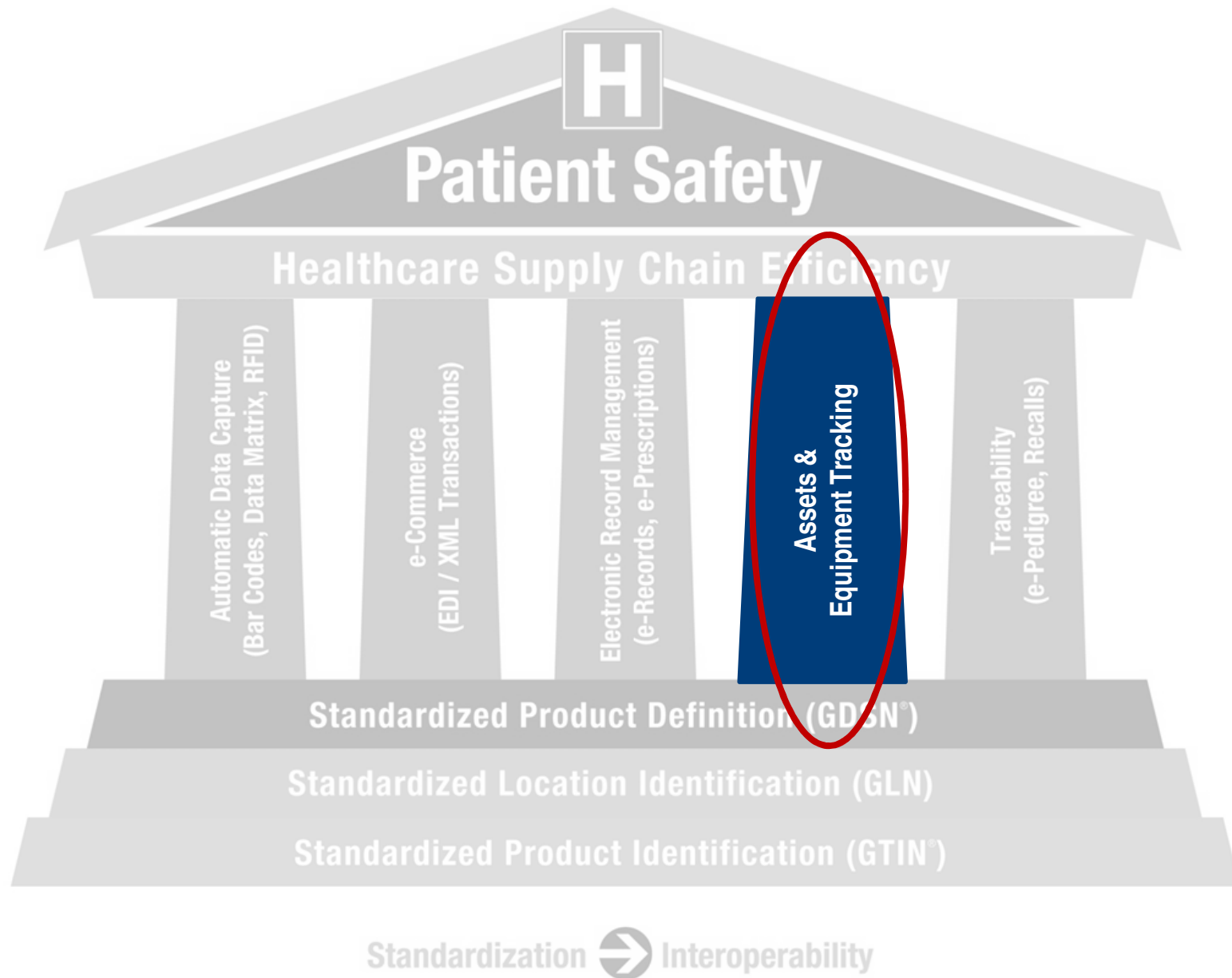


## ***“Building Patient Safety”***



# RFID Implementation

Jean Sargent

Director Supply Chain

GS1 Healthcare US Leadership Team

# Why

- Patient safety
- Recall and event reporting purposes
- Rental expenses in excess of \$400,000
- Needs Analysis indicated no need to rent
- Assist in determining need for additional equipment and actual numbers required
- First of many phases
  - Supply tracking
  - Patient tracking
  - Staff tracking

# Vision - Visibility

The screenshot displays the EKAHAU VISION software interface. The top navigation bar includes icons for Desktop, Find, Event Rules, Events, and Tag Management, along with a user login status: "Logged In as Vision Admin" and a "Logout" button. The main interface is divided into several sections:

- FIND**: A sidebar on the left containing search filters such as "Find:", "Tag Group:", "Item List:", "Map:", "Zone:", and "Battery (%)". It also includes a "Find" button and a "Saved Finds" section.
- ACTIVE SEARCH RULES [1] - PT3-3RD FLOOR**: A section at the top right of the main area showing active search rules for the PT3-3rd floor. It includes options for "Match All" and "Match Any", and buttons for "Save Search Rules" and "Clear Search Rules".
- Map**: A large central area displaying a floor plan map of the PT3-3rd floor. The map shows various rooms and corridors, with several icons representing people and equipment. A red pin icon is visible on the map. The map is titled "PT3-3rd floor" and "Zone: None".
- OPEN MINI MAP**: A button located at the bottom left of the map area.

The bottom right corner of the interface displays the version information: "EKAHAU VISION 1.0.1 © 2008 Ekahau, Inc."

# Tracking in Healthcare

## 1. Asset Tracking

- Clinical equipment
- Wheelchairs
- Beds, Stretchers
- Medical assets



## 2. Staff tracking

- Process/workflow improvement
- Scheduling, Patient transports

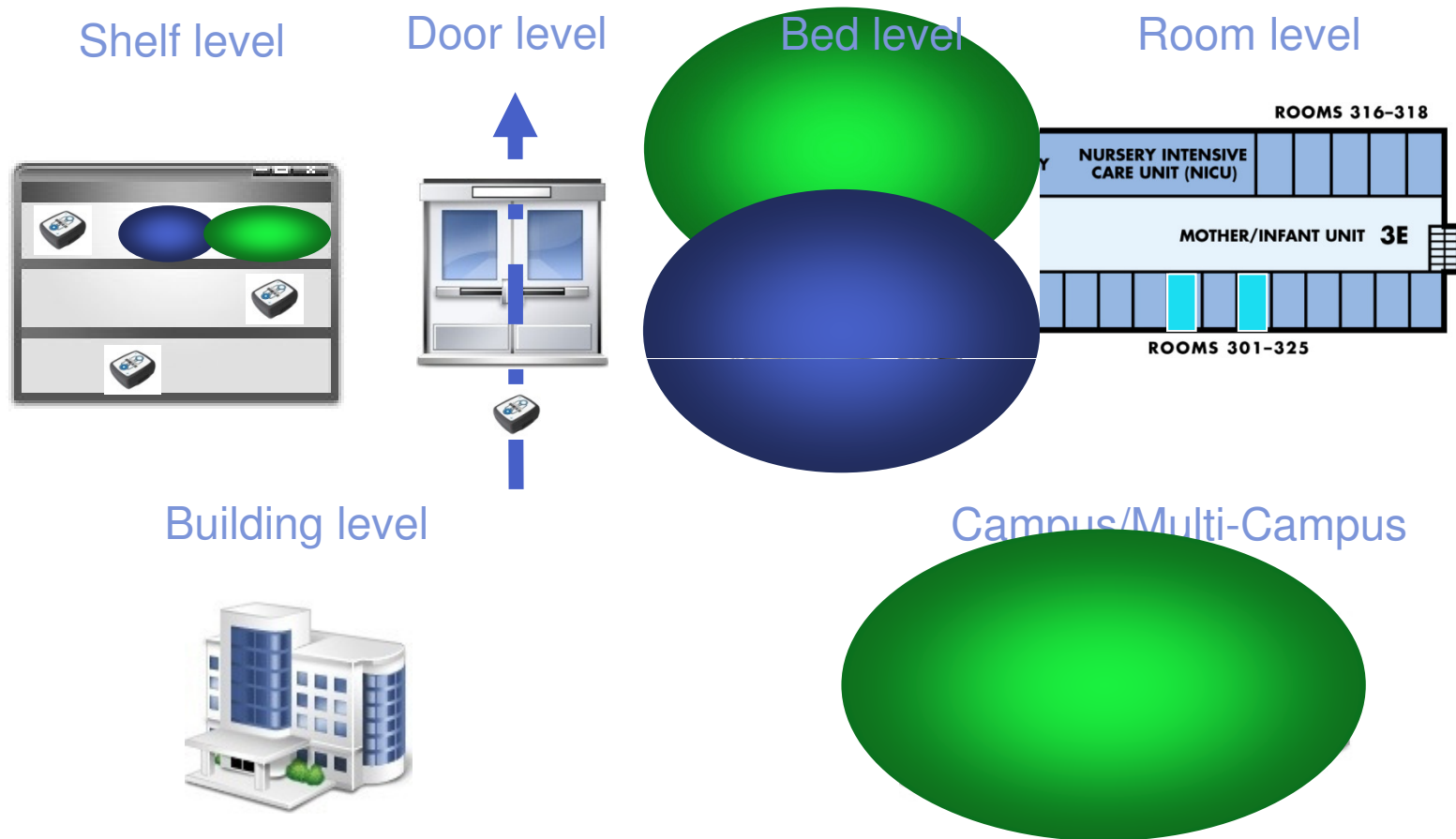


## 3. Patient tracking

- Process improvement through tracking patient flow
- Wanderers/elopement
- Long-term care, elderly care
- Control pandemics
- Manage disaster situations

# RTLS for Healthcare

## Real-Time-Location Solution



Ekahau software and Ekahau Tags

# T301-B Personnel Tag with LCD



T301B

- Pager/text messaging (LCD) option
- Motion sensor
- Panic buttons

## 1. Man-Down alerts:

- if person has not moved in 5min, send request to get security guard to that location

## 2. Panic Alerts

- if one needs help, push button and get help in you location

## 3. Hazardous areas

- whoever enters in hazardous area, report person ID and location

# Desktop

Customizable View, where users can display the most frequently requested location information

- Searches and Item Lists in map or list format
- Alerts and notifications
- User's location
- Quick Find

The screenshot shows the EKAHAU VISION desktop application interface. The top navigation bar includes 'DESKTOP', 'FIND', 'EVENTS', 'EVENTS', and 'TAG MANAGEMENT'. The user is logged in as 'Vision Admin'. The interface is divided into several sections:

- FIND**: A search bar with a 'Find' button.
- WHEELCHAIR PT3**: A table with columns 'Name', 'Zone', 'Time', 'Checked', and 'Checked Time'. It lists three items with their respective times and check status.
- WHEELCHAIRS, 3RD FLOOR RECEPTION**: A map view showing the 3rd floor layout with a red pin indicating a location.
- EVENTS**: A table with columns 'Log Message', 'Originator Name', and 'Time'. It lists four events related to wheelchair needs.

The bottom right corner of the interface displays the version 'EKAHAU VISION 1.0.1' and the copyright '© 2008 Ekahau, Inc.'.





## FIND

Find

Customize



## WHEELCHAIR PT3

List Map

☐ Auto refresh list every 10s

Name	Zone	Time
WV 299483		03:37:22 PM Thu Mar 13 2008
WV 938931		03:19:36 PM Thu Mar 13 2008
WV 837782		03:19:36 PM Thu Mar 13 2008

## EVENTS

Count: 5 / 1 New Events Received

Log Message	Originator Name
Wheelchairs needed, main building	WV 837782
Wheelchairs needed, main building	WV 938931
Wheelchairs needed, main building	WV 837782
Wheelchairs needed, main building	WV 938931
Wheelchairs needed, main building	WV 837782

## ALERT

### Exit Alarm

Checked: ☐ Checked Time:

Originator Name:

☒ 02:45:30 Map: PT3-3rd floor

Zone: Office 236

Time: 03:57:55 PM Thu Mar 13 2008

Event Type: Area Enter

Battery: 100

Acknowledge?

Yes

No

## WHEELCHAIRS, 3RD FLOOR RECEPTION

Map

PT3-3rd floor



# Event history

Full event history with visual search tools

- List events by
  - Event rule
  - Tag
  - Start date / end date
- Acknowledge open alerts
- View event location
  - List or map view

Count: 10 / 0 New Events Received

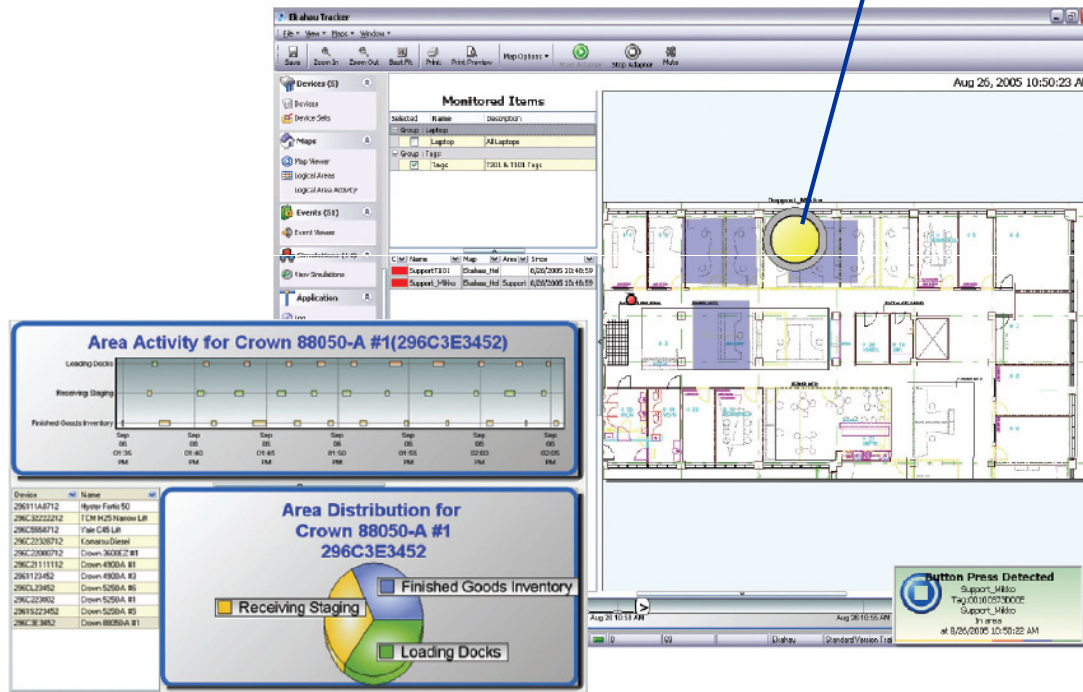
At least one alert has not been acknowledged! Click row to see alert details.

Log Message	Originator Name	Time	Map	Zone	Event Type	Acknowledged
Wheelchairs need	A 930229	03:22:13 PM	Tu Mar 14	PT3-3rd floor	Office 226	Button Press
Wheelchairs need	A 930229	03:22:15 PM	Tu Mar 14	PT3-3rd floor	Office 226	Button Press
Exit Alarm	W 299483	08:50:14 AM	Fri Mar 14	PT3-3rd floor	Reception	Area Enter
Exit Alarm	W 299483	08:50:09 AM	Fri Mar 14	PT3-3rd floor	Security	Area Enter
Exit Alarm		03:57:55 PM	Thu Mar 14	PT3-3rd floor	Office 236	Area Enter
Wheelchairs need	W 299483	03:55:42 PM	Thu Mar 14	PT3-3rd floor		Button Press
Wheelchairs need		02:58:10 PM	Thu Mar 14	PT3-3rd floor		Button Press
Wheelchairs need	wheel2	02:57:22 PM	Thu Mar 14	PT3-3rd floor		Button Press
Wheelchairs need	test3	10:17:48 AM	Thu Mar 14	PT3-3rd floor		Button Press
Wheelchairs need	test6	11:24:52 AM	Tue Mar 14	PT3-3rd floor		Button Press

# How Does It Work ?

5

Start Tracking!



**TRACK PDAs!**



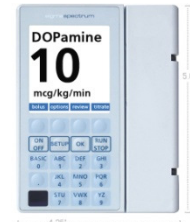
**TRACK Laptops!**

**TRACK Voip Phones!**



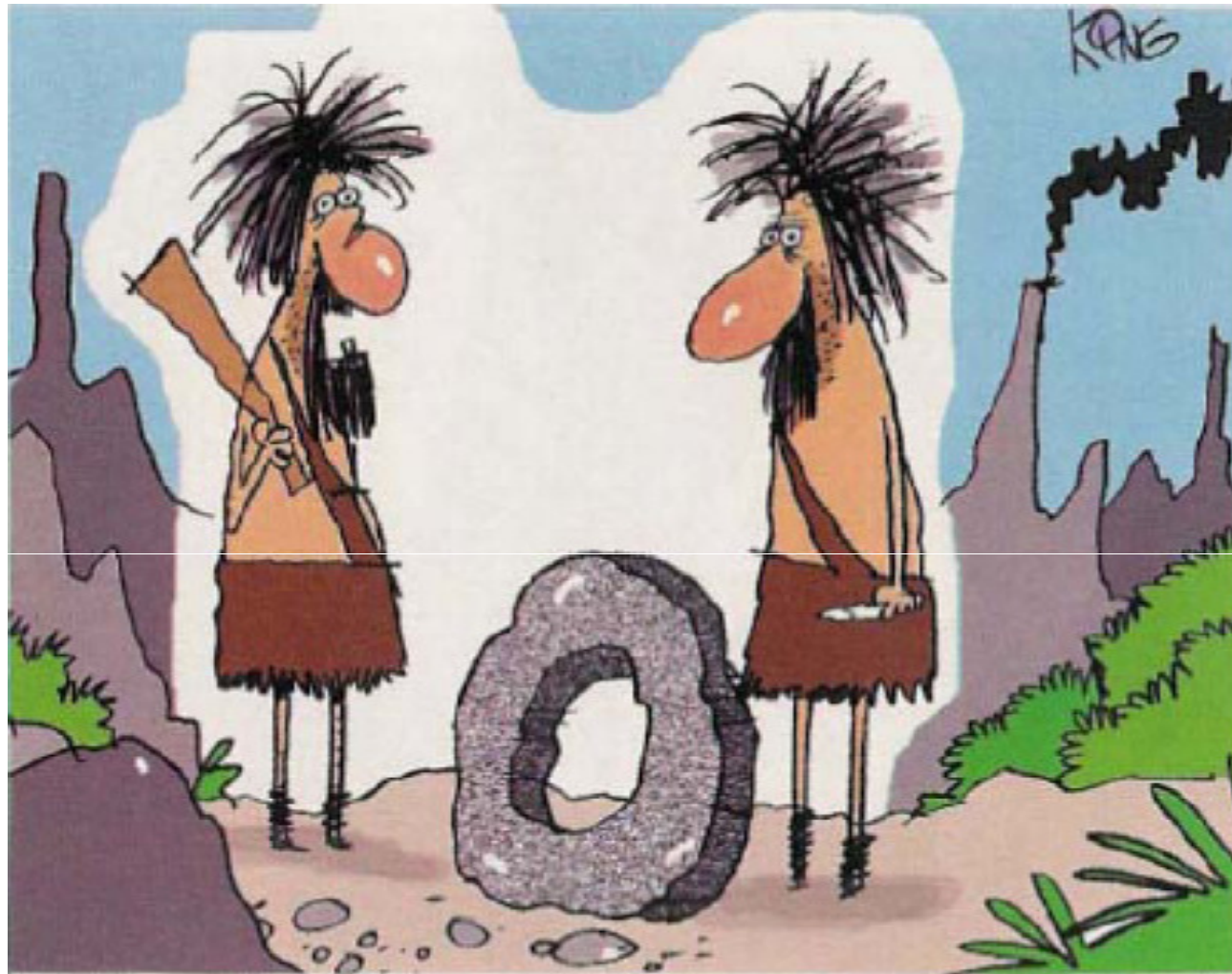
**TRACK Barcode/RFID scanners!**

**TRACK hospital wireless equipment!**



**TRACK WiFi TAGs!**

**UKHealthCare**



*"Interesting. But what's the ROI?"*

# WHY WE CHOSE EKAHAU ?

1. **OPEN** Wi-Fi RTLS works with any Wi-Fi vendor's network, as any standard Wi-Fi application
2. **EASY** to deploy Wi-Fi RTLS can be deployed over existing Wi-Fi network in less than an hour per 30 000 sqft hospital floor (example)
3. **ACCURATE** Wi-Fi RTLS does NOT require additional hardware infrastructure



# YES! Hospitals Need Asset Tracking



USED WHEELCHAIRS - FOR SALE

# Use of RFID in the Future

- Patient safety
- Interface between system and ADT
- Traceability of patients, supplies and equipment
- Monitoring of temperature of supplies during shipment
- Addition of semi-active tags for equipment
- Increase TJC inspection compliance