

Business Message Standard (BMS)

for

PLAN/Performance History

BRG: Plan

Version: 2.0.3

Date: 31.03.2005



Change Request Reference

Refer to Change Request (CR) Number(s):	N/A
CR Submitter(s):	N/A
Date of CR Submission to GSMP:	N/A

Business Requirements Document (BRAD) Reference

BRAD Title: BRD Performance History – Business Requirements Document
BRAD Date: 30.06.03
BRAD Version: 0.1.2

BRAD Title:
BRAD Date:
BRAD Version:

Document Summary

Document Title:	BMS for Plan/Performance History
Document Version	2.0.3
Owner:	Plan
Status:	(Check one box) <input type="checkbox"/> DRAFT <input checked="" type="checkbox"/> Approved
BMS Template Version:	1.0
Targeted BMS Publication Version	2.0.2

Document Change History

Note: During development include revisions in history. Upon Approval, eliminate revisions and include only delta from previous version.

Date of Change	Version	Changed By	Reason for Change	Summary of Change	Model Build #
31.03.05	2.0.0	Andrew Hearn	Initial Version in BMS/BSD template	Migration of BRD to standard BMS/BSD format	N/A
31.03.05	2.0.2	Andrew Hearn	Context Update	Updated the context listed within the document	N/A
23.04.07	2.0.3	Giovanni Biffi	Editorial Updates	Minor Editorial Updates Made to the Document	N/A

Business Message Standard

Table of contents

Chapter	Page
1 Business Solution	1
1.1 Business Domain View.....	1
1.1.1 Problem Statement / Business Need.....	1
1.1.2 Objective.....	1
1.1.3 Audience.....	1
1.1.4 Artefacts	1
1.1.5 References	1
1.1.6 Acknowledgements	3
1.1.6.1 BRG Members	3
1.1.6.2 ITRG Members	4
1.1.6.3 Task/Project Group Participants (<i>where applicable</i>)	4
1.1.6.4 Design Team Members	4
1.2 Business Context	5
1.3 Additional Technical Requirements Analysis	5
1.3.1 Technical Requirements (optional).....	5
1.4 Business Transaction View	6
1.4.1 Business Transaction Use Case Diagram.....	7
1.4.2 Use Case Description.....	8
1.4.3 Business Transaction Activity Diagram(s)	9
1.4.4 Business Transaction Sequence Diagram(s) (optional)	9
1.5 Information Model (including GDD Report)	10
1.5.1 Data Description:	10
1.5.2 GDD Report :	12
1.5.3 Class Diagrams	16
1.5.4 Code Lists.....	17
1.6 Business Document Example	18
1.6 Error! Bookmark not defined.	
1.7 Implementation Considerations	18
1.8 Testing.....	18
1.8.1 Pass / Fail Criteria	18
1.8.2 Test Data	18
1.9 Appendices.....	19

Business Message Standard

Table of contents

1.10 Summary of Changes..... 19

2 XML Technical Solution ITRG Packet.....20

1 Business Solution

1.1 Business Domain View

1.1.1 Problem Statement / Business Need

Collaborative Planning Forecasting and Replenishment (CPFR®) is a well documented nine step process developed and maintained by the Voluntary Interindustry Commerce Standards Association (VICS) for use by trading partners.

Within the CPFR® process, performance history is one type of historical data that a pair of CPFR® trading partners (a buyer and a seller) can share. Performance History represents a collection of values gathered for key performance metrics in the trading partner relationship.

Performance history captures key supply chain metrics. These metrics can include forecast accuracy, in-stock percentage, fill rate, days of supply, or on-time delivery percentage. Because many of these measures are ratios, they require a unit of measure to be meaningful.

1.1.2 Objective

To supply the detail design of the Performance History business transaction needed to meet the requirements of the referenced BRAD(s).

1.1.3 Audience

The audience for this document is anyone involved in collaborative planning, forecasting and replenishment.

1.1.4 Artefacts

(List of the artefacts that are used as either an input to the process or an output from the process, also indicating the different states that the artefact takes during the process.)

Artefact name	State	Artefact / State description

1.1.5 References

Reference Name	Description
Performance History– Business Requirement Document Version 2.0.0	The Business Requirement Document released for version 2.0 of the BMS Standard
EAN•UCC Global Business Model (Process and Data), “The Trade of Goods and Services”, October 1999	

Business Solution Design

VICS Collaborative Planning Forecasting and Replenishment (CPFR®), Global Commerce Initiative Recommendation, June 30, 2001	
VICS CPFR® XML Messaging Model, June 13, 2001	

1.1.6 Acknowledgements

Acknowledgement is also due to the work going on in the XML environment:

ebXML/SOAP

eCo Framework (Common Business Library)

RosettaNet

UN/CEFACT EWG

W3C

1.1.6.1 BRG Members

Function	Name	Company / organisation
BRG Chair		
BRG Member		
BRG Member		
BRG Member		
BRG Member		
BRG Member		
BRG Member		
BRG Member		
BRG Member		
BRG Member		
BRG Member		
BRG Member		
BRG Member		
BRG Member		
BRG Member		

1.1.6.2 ITRG Members

Function	Name	Company / organisation
ITRG Chair		
ITRG Member		
ITRG Member		
ITRG Member		
...		

1.1.6.3 Task/Project Group Participants (*where applicable*)

Function	Name	Company / organisation
Participant		
Participant		
Participant		
...		

1.1.6.4 Design Team Members

Function	Name	Organisation
Modeller		
XML Technical Designer		
EANCOM Technical Designer		
Peer Reviewer		

Business Solution Design

1.2 Business Context

(Note: The business context of the business)

Context Category	Value(s)
Industry	All
Geopolitical	All
Product	All
Process	Plan
System Capabilities	EAN.UCC
Official Constraints	None

1.3 Additional Technical Requirements Analysis

1.3.1 Technical Requirements (optional)

(User Interface, Security, Performance, Quality, etc.)

Number	Statement	Rationale

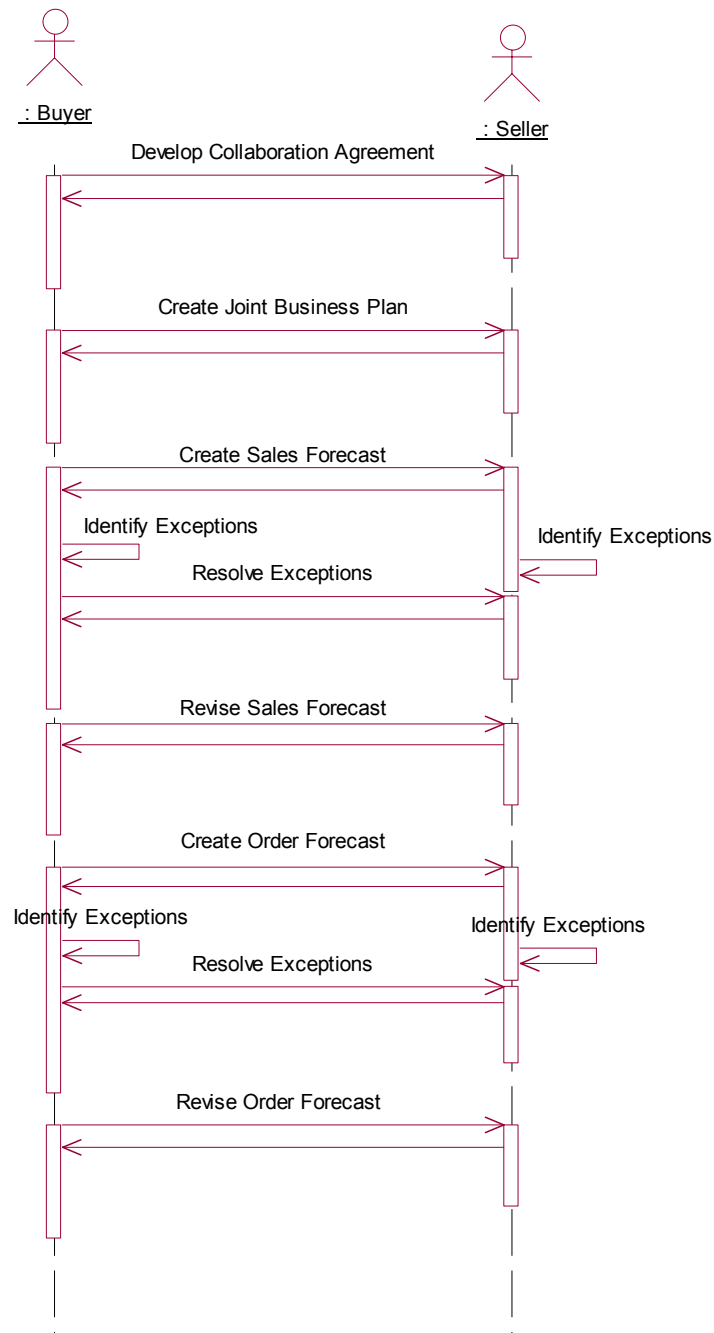
1.4 Business Transaction View

Exception criteria are rules that describe the thresholds for forecast variance, product activity, and performance history beyond which exceptions to sales forecasts and order forecasts are noted and resolved between a pair of trading partners.

Performance History is used for metric exceptions.

The collaboration for these exceptions and resolution to exceptions occurs between a pair of trading partners for a single location.

1.4.1 Business Transaction Use Case Diagram



1.4.2 Use Case Description

Use Case ID	UC-1															
Use Case Name	Performance History															
Use Case Description	The objective is for a pair of trading partners to elaborate upon operational conditions and key metrics that would identify exceptions to sales and order forecasts.															
Actors (Goal)	Performance History is a two-actor system involving a collaborative effort between a buyer and a seller for a single location. The lead actor in the collaboration depends upon the scenario most appropriate to the trading partner's business situation															
Performance Goals																
Preconditions	A collaboration agreement and joint business plan must be in place and a forecast is prepared and received by the trading partners.															
Post conditions	Successful: Exceptions, when identified, are noted and resolved. Unsuccessful: Operational activities and key metrics identifying exceptions to forecasts are not identified and resolved.															
Scenario	<p>Begins with the receipt a forecast by one of the Actors</p> <p>Continues with...</p> <table><thead><tr><th>Step #</th><th>Actor</th><th>Activity Step</th></tr></thead><tbody><tr><td>1</td><td>Buyer, Seller</td><td>Establishes exception criteria</td></tr><tr><td>2</td><td>Buyer, Seller</td><td>Establishes the value limits set by the exception criteria</td></tr><tr><td>3</td><td>Buyer, Seller</td><td>Upon receipt of a forecast (sales or order), the appropriate trading partner retrieves exception criteria data</td></tr><tr><td>4</td><td>Buyer, Seller</td><td>If forecast is within the value limits, no exception occurs or If forecast is outside the value limits, an exception is identified and processed</td></tr></tbody></table> <p>Ends with the resolution of exceptions</p>	Step #	Actor	Activity Step	1	Buyer, Seller	Establishes exception criteria	2	Buyer, Seller	Establishes the value limits set by the exception criteria	3	Buyer, Seller	Upon receipt of a forecast (sales or order), the appropriate trading partner retrieves exception criteria data	4	Buyer, Seller	If forecast is within the value limits, no exception occurs or If forecast is outside the value limits, an exception is identified and processed
Step #	Actor	Activity Step														
1	Buyer, Seller	Establishes exception criteria														
2	Buyer, Seller	Establishes the value limits set by the exception criteria														
3	Buyer, Seller	Upon receipt of a forecast (sales or order), the appropriate trading partner retrieves exception criteria data														
4	Buyer, Seller	If forecast is within the value limits, no exception occurs or If forecast is outside the value limits, an exception is identified and processed														
Alternative Scenario	<p>(any alternatives to the above scenario)</p> <table><thead><tr><th>Step #</th><th>Actor</th><th>Activity Step</th></tr></thead><tbody><tr><td></td><td></td><td></td></tr><tr><td></td><td></td><td></td></tr></tbody></table>	Step #	Actor	Activity Step												
Step #	Actor	Activity Step														
Related Requirements	<table><tr><td>1</td><td></td></tr></table>	1														
1																
Related Rules	<table><tr><td></td><td></td></tr><tr><td></td><td></td></tr><tr><td></td><td></td></tr><tr><td></td><td></td></tr></table>															

1.4.3 Business Transaction Activity Diagram(s)

1.4.4 Business Transaction Sequence Diagram(s) (optional)

Business Solution Design

1.5 Information Model (including GDD Report)

1.5.1 Data Description:

Class (ABIE)	Attribute (BBIE)	Association (ASBIE)	Secondary Class	Related Requirements
MultiMeasurementValue				BRD for Performance History V 0.1.2
	measurement-Value			BRD for Performance History V 0.1.2
PerformanceDataItem				BRD for Performance History V 0.1.2
	metricType			BRD for Performance History V 0.1.2
	None			BRD for Performance History V 0.1.2
		None	TimeSeries-DataItem	BRD for Performance History V 0.1.2
PerformanceHistory				BRD for Performance History V 0.1.2
		None	Performance-DataItem	BRD for Performance History V 0.1.2
		None	PlanDocument	BRD for Performance History V 0.1.2
PlanDocument				BRD for Performance History V 0.1.2
	dataSourceCode			BRD for Performance History V 0.1.2
	plannerIdentification			BRD for Performance History V 0.1.2
		None	Document	BRD for Performance History V 0.1.2

Business Solution Design

Class (ABIE)	Attribute (BBIE)	Association (ASBIE)	Secondary Class	Related Requirements
		buyer	PartyIdentification	BRD for Performance History V 0.1.2
		seller	PartyIdentification	BRD for Performance History V 0.1.2
		period	TimePeriodDue	BRD for Performance History V 0.1.2
TimeSeriesDataItem				BRD for Performance History V 0.1.2
		None	CollaborativeTradeItem	BRD for Performance History V 0.1.2
		quantity	MultiMeasurementValue	BRD for Performance History V 0.1.2
		period	TimePeriod	BRD for Performance History V 0.1.2

Business Solution Design

1.5.2 GDD Report :

Class (ABIE)	Attribute (BBIE)	Association (ASBIE)	Secondary Class	Official Dictionary Entry Name	Definition	Multiplicity
MultiMeasurementValue				Multi-unit Measure. Details		
	measurement-Value			Multi-unit Measure. Measure. Measure		1..*
PerformanceDataItem				Performance_ Time Stamped Trade Item Quantity. Details	This class provides the metrics, measurement value, and the time series data item for each performance data item.	
	metricType			Performance_ Time Stamped Trade Item Quantity. Metric. Metric Criteria Type_ Code	!! This external class originates in Plan Common and is a class that is used in more than one CPFR class diagram. This class identifies the metric type code. The metric type code list has the following attributes: Fill rate, Forecast accuracy, Gross margin, In stock, On time delivery, Supply	1..1
	None			Performance_ Time Stamped Trade Item Quantity. Metric. Measure		1..1
		None	TimeSeries-DataItem	Performance_ Time Stamped Trade Item Quantity. Inheritance_ Association. Time Stamped Trade Item Quantity	None	1..1
PerformanceHistory				Performance	The Performance History based on agreed upon key metrics as an	

Business Solution Design

Class (ABIE)	Attribute (BBIE)	Association (ASBIE)	Secondary Class	Official Dictionary Entry Name	Definition	Multiplicity
				History. Details	exception message for either a Sales Forecast and an Order Forecast from which the resolution will create a Forecast Revision. The Performance History classes are pictured and are listed here alphabetically. These include: Measurement Value, Metric Type Code List, Performance Data Item, Performance History, Plan Document, Time Series Data Item	
		None	Performance-DataItem	Performance History. Association. Performance_Time Stamped Trade Item Quantity	!! This class provides the metrics, measurement value, and the time series data item for each performance data item. This class has no attributes.	1..*
		None	PlanDocument	Performance History. Inheritance_ Association. Plan Document	!! This class provides the metrics; measurement value; and the time series data item for each performance data item. This class has no attributes.	1..1
PlanDocument				Plan Document. Details	!! This external class originates in Plan Common and is a class that is used in more than one CPFR class diagram. Plan Document class is the EAN•UCC System equivalent to CPFR Message class. This class has an attribute that provides the identification of the planner, identifies the source of the data, the time period for the document and the buyer and seller.	
	dataSourceCode			Plan Document. Data Source. Data Source_Code	!! This external class originates in Plan Common and is a class that is used in more than one CPFR class diagram. The source of a forecast data item exception shall be identified. This class provides the codes. The data source code list has the following attributes: Buyer, Seller.	1..1
	plannerIdentification			Plan Document. Planner Identification. Text		0..1

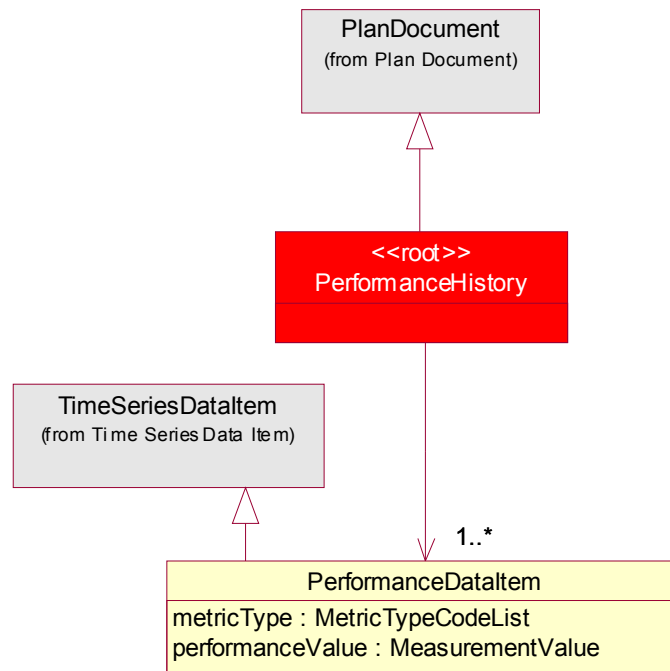
Business Solution Design

Class (ABIE)	Attribute (BBIE)	Association (ASBIE)	Secondary Class	Official Dictionary Entry Name	Definition	Multiplicity
		None	Document	Plan Document. Association. Electronic_Document	None	1..1
		buyer	PartyIdentification	Plan Document. Buyer. Party Identification	None	1..1
		seller	PartyIdentification	Plan Document. Seller. Party Identification	None	1..1
		period	TimePeriodDue	Plan Document. Period. Time Period	None	1..1
TimeSeriesDataItem				Time Stamped Trade Item Quantity. Details	!! This external class originates in Plan Common and is a class that is used in more than one CPFR class diagram. This class links a Time Period, Measurement for the quantity involved, and to Collaborative Trade Item for the required product. It has no attributes.	
		None	CollaborativeTradeItem	Time Stamped Trade Item Quantity. Item. Collaborative Item	!! This external class originates in Plan Common and is a class that is used in more than one CPFR class diagram. Collaborative Trade Item identifies the product with the buyer and seller locations.	1..1
		quantity	MultiMeasurementValue	Time Stamped Trade Item Quantity. Quantity. Multi-unit Measure	!! This external class originates in Plan Common and is a class that is used in more than one CPFR class diagram. Collaborative Trade Item identifies the product with the buyer and seller locations.	1..1
		period	TimePeriod	Time Stamped Trade Item Quantity. Asso-	!! This external class originates in Plan Common and is a class that is used in more than one CPFR class diagram. Collaborative Trade Item identifies the product with the buyer and seller loca-	1..1

Business Solution Design

Class (ABIE)	Attribute (BBIE)	Association (ASBIE)	Secondary Class	Official Dictionary Entry Name	Definition	Multiplicity
				ciation. Date_ Time Period	tions.	

1.5.3 Class Diagrams



Business Solution Design

1.5.4 Code Lists

Code List Name	Code List Description
MetricTypeCodeList	
Code Name	Code Description
FILL_RATE	N/A
FORECAST_ACCURACY	N/A
GROSS_MARGIN	N/A
IN_STOCK	N/A
ON_TIME_DELIVERY	N/A
SUPPLY	N/A

Business Solution Design

1.6 Business Document Example

1.7 Implementation Considerations

1.8 Testing

1.8.1 Pass / Fail Criteria

Number	Test Criteria	Related Requirement	Design Element	Pass Criteria	Fail Criteria
1					
2					
3					

1.8.2 Test Data

Attribute	Value

Business Solution Design

1.9 Appendices

1.10 Summary of Changes

Change	BMS Ver- sion	Associated CR Number

2 XML Technical Solution ITRG Packet

The Technical Representation of the Business process is documented in a Technical Solution ITRG Packet containing all supplemental XML artefacts and is used by the Information Requirements Group (ITRG) to evaluate the solution. Upon approval from the Information Technical Requirements Group (ITRG), the Technical Solution ITRG Packet is updated to the Technical Solution Implementers Packet and published with the Business

Message Standard at:

http://www.ean-ucc.org/global_smp/ean.ucc_standards.htm.

Technical Solution ITRG Packet Content:

- Business Message Standard (BMS)
- ITRG Review Packet
 - Style Sheet: This HTML has been created using a Style Sheet that is a visual representation of the data. It is not an actual Style Sheet, but an ex-ample of what a Style Sheet may look like.
 - Instance File: The Instance File is an example of what the schema may look like when it includes live data. This can be used as comparison to a completed schema and can serve as a point of reference for development.
 - Technical Level GDD Report

Technical Solution Implementers Packet Content:

Contains all the message specific.XSD files required to implement

Example:

- AS2Envelope
- Command.xsd
- DocumentCommand.xsd
- Proxy.xsd
- ComponentLibrary.xsd

Both the Business Message Standard and the Implementers Packet are available during the ITRG Review Period in the working documents section of the ITRG eRoom:

http://eroom.uncouncil.org/eRoom/facility/InformationTechnicalAssessmentGroupITAG/0_14f7

All documents for review will be in this folder listed by name of the Change Request and Change Request Number. The Business Message Standard is not open for review, but offered as the basis for determining the suitability of the technical solutions.

This eRoom may be accessed by using the following User Name and Password:

User Name: guest

Password: guest