



Business Message Standard (BMS) Despatch Advice

BMS Release: 2.4.0, BRG Name: eCom

Issue 3.1.3, 25-Sep-2007

Document Summary

Document Item	Current Value
Document Title	Business Message Standard (BMS)
BMS Name	Despatch Advice
BMS Release	2.4.0
BRG Name	eCom
Document Number	Issue 3.1.3
Date Last Modified	25-Sep-2007
Status	Approved
Owner	eCom BRG
BMS Template Version	1.8

Change Request Reference

Date of CR Submission to GSMP:	CR Submitter(s):	Refer to Change Request (CR) Number(s):
20070703	John RYU, GS1 Global Office	07-000271
20070321	Stef SPAAN, GS1 Netherlands	07-000103
20041130	GS1	04-000224
20041009	GS1 France	04-000178

Business Requirements Document (BRAD) Reference

BRAD Title:	BRAD Date:	BRAD Version
BRAD Despatch Advice Country of Processing and Origin	20070606	0.0.4
BRD Despatch Advice – Business Requirement Document	20041111	1.0.9.3
BRAD Upstream Standards – Despatch, Receipt and Consumption	20041129	0.1.1
BRD Exchange Traceability and Processing History Data of Beef Products (Slaughter to Retail)	20051102	2.50

Document Change History

Date of Change	Version	Changed By	Reason for Change	Summary of Change	Model Build #
20041231	2.0.0	Eric Kauz		Migration of BRD to standard BMS/BSD format	Not Applicable

Date of Change	Version	Changed By	Reason for Change	Summary of Change	Model Build #
20041231	2.0.0	Rob Toole		Completed BSD by adding GDD information and updated class diagram	Not Applicable
20050103	2.1.1	Coen Janssen	UIM + ebMeat		Not Applicable
20050304	2.1.2	Coen Janssen	Review comments DTG and IRT	Several changes to chapter 7. Included example in chapter 8.	Not Applicable
20050325	2.1.3	Coen Janssen	Review comments DTG	Several changes to chapters 7 and 8.	Not Applicable
20050421	2.2.0	Coen Janssen	Public review comments including comments made in Vienna meeting.	Changed role names in use cases: Ship To → Receiver, Ship From → Shipper Functional changes: see chapter 12	Not Applicable
20050502	2.2.1	John Ryu	Incorporated Peer Review (6699) model changes Textual and GDD updated still needed based on peer review (6699)	Replaced class diagram in chapter 7.2 Alphabetized attributes per Modelling Best Practices. Aesthetic changes to model.	Model P4CL: 6718 BSD P4CL: 6720
20050531	2.2.1	John Ryu	Peer Review		
20050617	2.2.2	Eric Kauz	Change to data types for measurementUnitCodeList Change of cardinality of carrier to 0..1 as per requirements.		
20050721	2.2.3	Coen Janssen	Technical Design Public Review	Several cosmetic changes. Fixed references to requirements in paragraph 1.5.1.	
20070627	3.0.0	John Ryu	Initial Creation for BMS Release Version 2.4 Based on eCom BRG Teleconference 20070620	Changes noted in Summary of changes	BSD P4CL: MDL P4CL: 9570
20070703	3.1.0	John Ryu	Based on eCom BRG 20070703 Received motion for TSD Development and Peer Review.	Changes noted in Summary of changes	BSD p4CL: 9587 MDL P4CL: 9586
20070706	3.1.1	John Ryu	Errata changes Based on peer review	Changes noted in Summary of changes	BSD P4CL: 9661

Date of Change	Version	Changed By	Reason for Change	Summary of Change	Model Build #
20070824	3.1.2	John Ryu	Public Review	Public Review	BSD P4CL: 9806
20070925	3.1.3	John Ryu	eCom BRG eBallot Approved	Update BMS to approved	BSD P4CL: 10006

Disclaimer

Whilst every effort has been made to ensure that the guidelines to use the GS1 standards contained in the document are correct, GS1 and any other party involved in the creation of the document HEREBY STATE that the document is provided without warranty, either expressed or implied, of accuracy or fitness for purpose, AND HEREBY DISCLAIM any liability, direct or indirect, for damages or loss relating to the use of the document. The document may be modified, subject to developments in technology, changes to the standards, or new legal requirements. Several products and company names mentioned herein may be trademarks and/or registered trademarks of their respective companies.

Table of Contents

1.	Business Domain View	6
1.1.	Problem Statement / Business Need	6
1.2.	Objective.....	6
1.3.	Audience.....	6
1.4.	References	6
1.5.	Acknowledgements	7
1.5.1.	BRG Group.....	7
1.5.2.	Design Team Members	8
2.	Business Context	8
3.	Additional Technical Requirements Analysis.....	8
3.1.	Technical Requirements (optional).....	8
4.	Business Transaction View	9
4.1.	Business Transaction Generate Despatch Advice Use Case Diagram	9
4.1.1.	Use Case Description.....	9
4.1.2.	Business Transaction Activity Diagram.....	10
4.1.3.	Business Transaction Sequence Diagram(s).....	10
4.2.	Business Transaction Dispatch Notification Use Case Diagram	11
4.2.1.	Use Case Description.....	11
5.	Information Model (Including GDD Report)	12
5.1.	GDD Report.....	12
5.1.1.	Despatch Advice	12
5.2.	Class Diagrams	23
5.3.	Code Lists.....	25
5.3.1.	Change Reason Code List	25
5.3.2.	Incoterm Code List	25
5.3.3.	Transportation Method Type Code List.....	26
6.	Business Document Example	28
7.	Implementation Considerations.....	29
8.	Testing.....	29
8.1.	Pass / Fail Criteria	29
8.2.	Test Data	29
9.	Appendices	30
10.	Summary of Changes.....	31

1. Business Domain View

1.1. Problem Statement / Business Need

Generally, the Despatch Advice enables one Shipper to provide information about the content of a shipment to one Receiver. Specifically, the Despatch Advice serves as a link to a prior agreement between Shipper and Receiver and is applicable to one or many Receiver destination points from one Shipper launch point. Furthermore, the Despatch Advice may be used to indicate the despatch of goods being returned by the Receiver. The Despatch Advice may be utilized downstream between retailers, suppliers, 3PLs, carriers and manufacturers as well as upstream between manufacturers, 3PLs and material suppliers.

1.2. Objective

The objective of the Despatch Advice is:

- To facilitate the receipt of goods
- To make the despatch advice applicable to a replenishment scenario where there is no link to an order but to a contract or other kind of agreement.
- To make the despatch advice applicable to multiple destination points
- To provide more detailed information about the shipment as well as the content of a shipment from a shipper and if applicable the shipper's warehouse to the receiver and his warehouse
- To make the despatch advice applicable for the despatch of goods being returned

1.3. Audience

Retailers, manufacturers, warehouses, material suppliers, carriers and any other third party such as a logistic service or 3PL provider involved in the despatch and receipt of goods.

1.4. References

Reference #	Reference Name	Description
[Ref 1]	BRD Exchange Traceability and Processing History Data of Beef Products (Slaughter to Retail) Version 2.50	
[Ref 2]	BRAD Upstream Standards – Despatch, Receipt & Consumption Version 0.1.1	
[Ref3]	BRD Despatch Advice Version 1.0.9.3	
[Ref4]	BMS Common Library Release Version 2.1	The documented design of components that are used in multiple messages.
[Ref 5]	BRAD Despatch Advice Country of Processing and Origin Version 4	Details the country of processing and origin requirements.
[Ref 6]	BMS Common Library Release Version 2.4	The documented design of components that are used in multiple messages.

1.5. Acknowledgements

The following is a list of individuals (and their companies) who participated in the creation, review and approval of this BMS.

1.5.1. BRG Group

Function	Name	Company / organisation
BRG Chair	Carol EDISON	General Mills
BRG Manager	Jean Luc CHAMPION	GS1 Global Office
BRG Member	Ryohei ARIGA	Procter & Gamble
BRG Member	Rick BATTISTA	Roadway
BRG Member	Maureen BONITO	ISI Mars
BRG Member	Richard CHRESTA	GS1 Switzerland
BRG Member	Marilyn DODD	3M
BRG Member	Sue DONARSKI	Schneider
BRG Member	Karina DUVINGER	GS1 Sweden
BRG Member	Chris EMMENT	Compass Services
BRG Member	Suzanne FASSLER	JC Penney
BRG Member	Don FLINT	CHEP
BRG Member	Klaus FORDERER	GS1 Germany
BRG Member	Wayne GINGERICH	Werner
BRG Member	Anders GRANGARD	GS1 Global Office
BRG Member	Steve HAMMOND	Compass
BRG Member	Rob HEATHER	GS1 UK
BRG Member	Tom HEIST	GS1 Global Office
BRG Member	Doug HILL	GS1 Denmark
BRG Member	Sandra HURD	CIT
BRG Member	James JENNINGS	Procter & Gamble
BRG Member	Fred KEMPKE	Unilever
BRG Member	Rita LAUR	GS1 Canada
BRG Member	Bill LOHSE	Data Tronics
BRG Member	Ana Paula MANIERO	GS1 Brazil
BRG Member	Eric MAREE	Accenture
BRG Member	Shanda MARVIN	Procter & Gamble
BRG Member	James MORRISON	Whirlpool
BRG Member	Dana MORTON	Fedex
BRG Member	Frank NAPOLI	LMI
BRG Member	Debby NOYES	Johnsonville
BRG Member	Steven PEREIRA	GS1 Australia
BRG Member	Marie PERRY	Coca Cola

Function	Name	Company / organisation
BRG Member	Natascha POTTIER	GS1 France
BRG Member	Steve ROSENBERG	GS1 US
BRG Member	John RYU	GS1 Global Office
BRG Member	Kazuya SATO	GS1 Japan
BRG Member	Jon SHARRATT	Target
BRG Member	Andy SLOW	GS1 Singapore
BRG Member	Matthew SMITH	Bunnings
BRG Member	Tan Jin SOON	GS1 Singapore
BRG Member	Ste SPAAN	GS1 Netherlands
BRG Member	Chi YANG	UPS

1.5.2. Design Team Members

Function	Name	Organisation
Modeler	John RYU	GS1 Global Office
XML Technical Designer	Dipan ANARKAT	GS1 Global Office
EANCOM Technical Designer	Not Applicable	
Peer Reviewer	Giovanni BIFFI	GS1 Global Office

2. Business Context

Context Category	Value(s)
Industry	All
Geopolitical	Global
Product	All
Process	Deliver
System Capabilities	GS1 System
Official Constraints	None

3. Additional Technical Requirements Analysis

Not Applicable

3.1. Technical Requirements (optional)

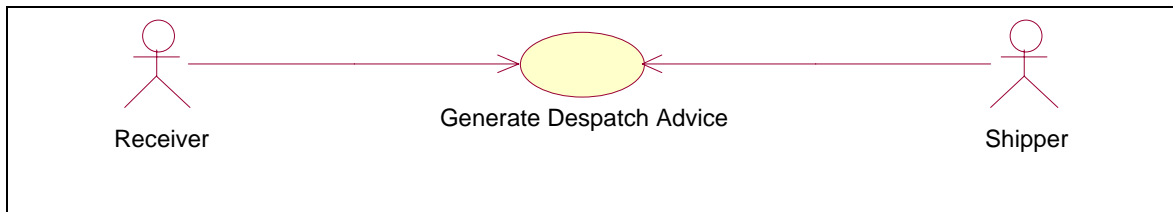
Number	Statement	Rationale

4. Business Transaction View

4.1. Business Transaction Generate Despatch Advice Use Case Diagram

The Despatch Advice must contain certain information, in line item format, to convey comparative information to the Receiver. The Despatch Advice therefore will provide for the identification of the individual lines within the Despatch Advice by line sequence number. The Despatch Advice may provide for a reference to other related documents, such as the Order, Delivery Note and Consignment. The Despatch Advice may also include a reference to a contract and may include the line sequence numbers from the documents Order, Delivery Note, Consignment and Contract

Figure 4-1 Use Case Generate Despatch Advice

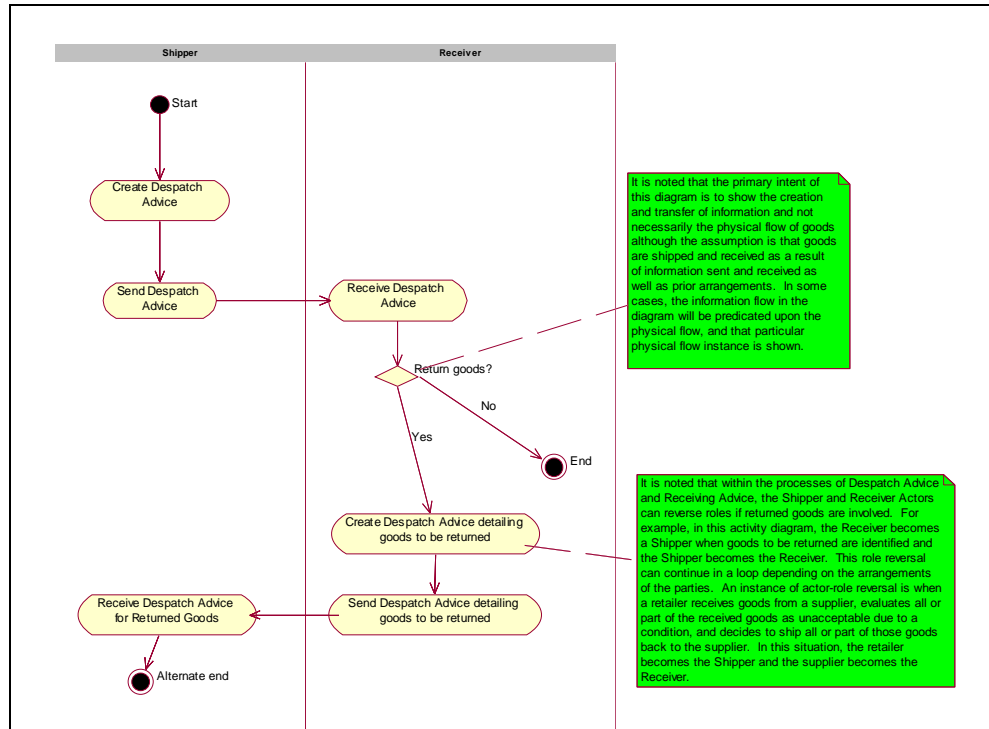


4.1.1. Use Case Description

Use Case ID	GDA									
Use Case Name	Generate Despatch Advice									
Use Case Description	Describes a complete process whereby a Shipper generates a Despatch Advice based on information about the order and the product.									
Actors (Goal)	Receiver and Shipper									
Performance Goals	None									
Preconditions	Master data alignment of locations (GLNs) and products (GTINs).									
Post conditions	Check of the received physical goods with the information of the Despatch Advice and the check of the state of the goods themselves.									
Scenario	<p>Begins when...</p> <p>The Receiver receives a shipment of goods accompanied or preceded by the Despatch Advice or Shipping Documents.</p> <p>Continues with...</p> <table><tr><th>Step #</th><th>Actor</th><th>Activity Step</th></tr><tr><td>1</td><td>Shipper</td><td>Shipper issues the Despatch Advice containing the information of the actual physical shipment.</td></tr><tr><td>2</td><td>Receiver</td><td>Receiver receives Despatch Advice.</td></tr></table> <p>Ends when...</p> <p>If necessary, Receiver creates and sends Despatch Advice to Shipper indicating returned goods. *See role reversal note in activity and sequence diagrams.</p>	Step #	Actor	Activity Step	1	Shipper	Shipper issues the Despatch Advice containing the information of the actual physical shipment.	2	Receiver	Receiver receives Despatch Advice.
Step #	Actor	Activity Step								
1	Shipper	Shipper issues the Despatch Advice containing the information of the actual physical shipment.								
2	Receiver	Receiver receives Despatch Advice.								
Alternative Scenario	Not Applicable									
Related Requirements	Not Applicable									
Related Rules	Not Applicable									

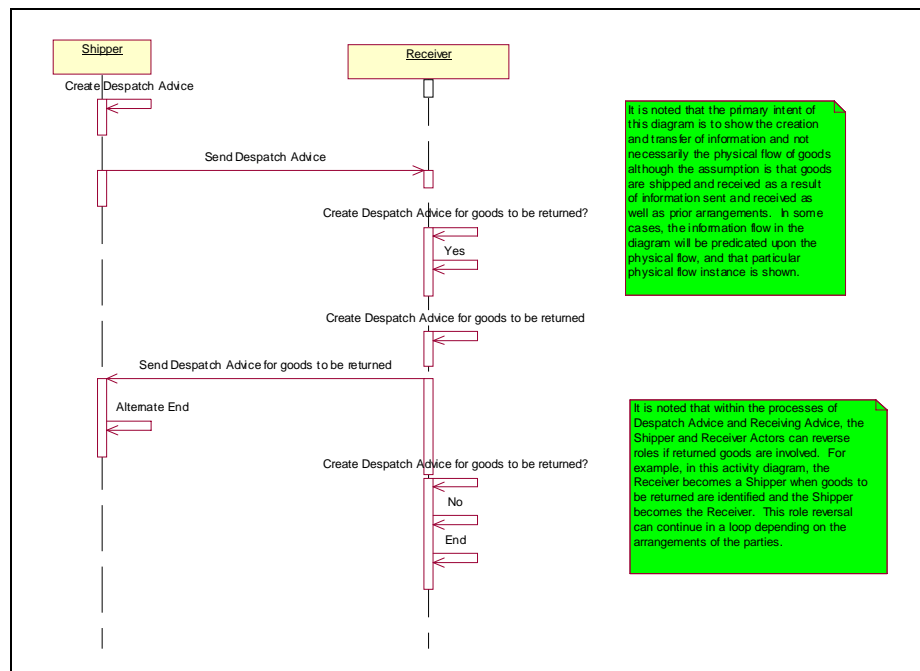
4.1.2. Business Transaction Activity Diagram

Figure 4-2 Activity Diagram Generate Despatch Advice



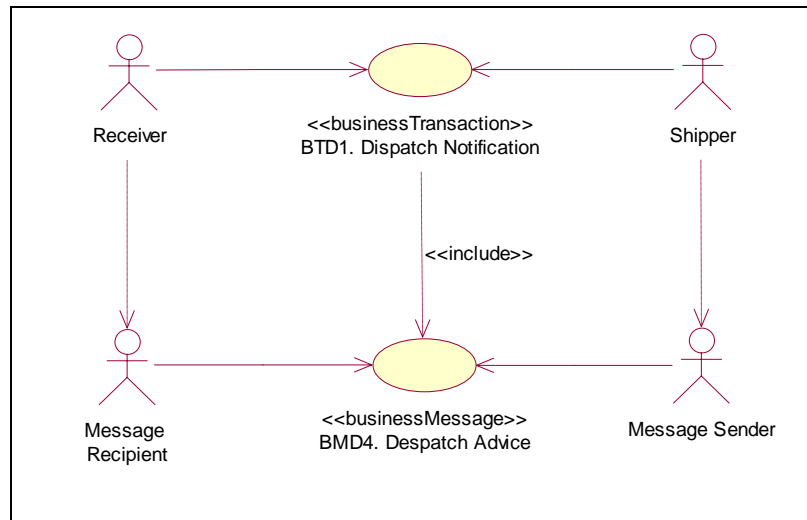
4.1.3. Business Transaction Sequence Diagram(s)

Figure 4-3 Sequence Diagram Generate Despatch Advice



4.2. Business Transaction Dispatch Notification Use Case Diagram

Figure 4-4 Business Transaction Dispatch Notification



4.2.1. Use Case Description

Use Case ID	BTD1								
Use Case Name	Dispatch Notification								
Use Case Description	<p>The Dispatch Notification enables the supplier / carrier to provide detailed information about the content of a shipment and enables a buyer to reconcile or confirm the physical shipment against the order; it provides a mirror of the shipment that is to be made in terms of package details and in terms of structure of the delivery.</p> <p>The Dispatch Notification is sent by the Ship From party to the Ship To party when the goods are sent - goods being sent being considered as in transit.</p>								
Actors (Goal)	Shipper: To notify the receiver in advance of the contents of a shipment. Receiver: To be informed in advance about the contents of a shipment.								
Performance Goals	The information must be received prior to the arrival of the actual shipment.								
Preconditions	Dispatch Notification to be sent								
Post conditions	Dispatch Notification received								
Scenario	<p>Begins when:</p> <p>After the shipment has been picked, packed, labelled and loaded in order to guarantee that the information sent is correct.</p> <p>Continues with:</p> <table><tr><th>Step #</th><th>Actor</th><th>Activity Step</th></tr><tr><td>1.</td><td>Ship From</td><td>Sends Despatch Advice to the Ship To party.</td></tr></table> <p>Ends when: Ship to receives the despatch advice.</p>			Step #	Actor	Activity Step	1.	Ship From	Sends Despatch Advice to the Ship To party.
Step #	Actor	Activity Step							
1.	Ship From	Sends Despatch Advice to the Ship To party.							
Alternative Scenario	Not Applicable								
Related Requirements	Not Applicable								
Related Rules	Not Applicable								

5. Information Model (Including GDD Report)

5.1. GDD Report

5.1.1. Despatch Advice

Class (ABIE)	Attribute (BBIE)	Association (ASBIE)	Secondary Class	Definition	Multiplicity	Data Type Components	Related Requirements
ConsignedItemWeight				Total weight of a trade item within a consignment (across logistic units).			[BRD Exchange Traceability and Processing History Data of Beef Products (Slaughter to Retail) Version 2.50]
			TradeItemIdentification	This information on TradeItemIdentification for ConsignedItemWeight.	1..1		[BRD Exchange Traceability and Processing History Data of Beef Products (Slaughter to Retail) Version 2.50]
			UnitMeasurement	This information on UnitMeasurement for ConsignedItemWeight.	1..*		[BRD Exchange Traceability and Processing History Data of Beef Products (Slaughter to Retail) Version 2.50]
ConsignmentInformation				Information on goods that will be paid for when they are sold or consumed.			[BRD Exchange Traceability and Processing History Data of Beef Products (Slaughter to Retail) Version 2.50]

Class (ABIE)	Attribute (BBIE)	Association (ASBIE)	Secondary Class	Definition	Multiplicity	Data Type Components	Related Requirements
			ConsignedItemWeight	This information on ConsignedItemWeight for ConsignmentInformation.	0..*		[BRD Exchange Traceability and Processing History Data of Beef Products (Slaughter to Retail) Version 2.50]
			PackageInformation	This information on PackageInformation for ConsignmentInformation.	1..1		[BRD Exchange Traceability and Processing History Data of Beef Products (Slaughter to Retail) Version 2.50]
		consignmentIdentification	Reference	Number that identifies the consignment. (In case consignment consists of one shipment; it coincides with the shipment number).The Consignment Number; AI (401); is allocated by a freight forwarder; (or a carriers acting as a freight forwarder); or a consignor; but only if the prior agreement of the freight forwarder is given. Consignment: A logical grouping of goods (one or more physical entities) that is intended to be transported as a whole from a Shipper (Consignor) to a Receiver (Consignee) by a carrier or freight forwarder.	0..1		[BRD Exchange Traceability and Processing History Data of Beef Products (Slaughter to Retail) Version 2.50]
			UnitMeasurement	This information on UnitMeasurement for ConsignmentInformation.	0..*		[BRD Exchange Traceability and Processing History Data of Beef Products (Slaughter to Retail) Version 2.50]

Class (ABIE)	Attribute (BBIE)	Association (ASBIE)	Secondary Class	Definition	Multiplicity	Data Type Components	Related Requirements
DeliveryAndTransportInformation				Information with regards to the transportation and delivery of goods.			BRD Exchange Traceability and Processing History Data of Beef Products (Slaughter to Retail) Version 2.50
	deliveryOfTransportTerms			Code specifying the terms of delivery or transport.	0..1	Code. Content	[BRAD Upstream Standards – Despatch; Receipt & Consumption Version 0.1.1] {7.1.1-13}
	licensePlate			Vehicle license plate/Aircraft number identifying a means of transport.	0..1	Text. Content	[BRD Exchange Traceability and Processing History Data of Beef Products (Slaughter to Retail) Version 2.50]
	modeOfTransport			Code specifying the name of a mode of transport.	0..1	Code. Content	[BRD Exchange Traceability and Processing History Data of Beef Products (Slaughter to Retail) Version 2.50]
		billOfLadingNumber	Reference	Bill of lading: A document which evidences a contract of carriage and the taking over or loading of goods by the carrier; and by which the carrier undertakes to deliver the goods against surrender of the document.	0..1		[BRAD Upstream Standards – Despatch; Receipt & Consumption Version 0.1.1] {7.1.1-12}

Class (ABIE)	Attribute (BBIE)	Association (ASBIE)	Secondary Class	Definition	Multiplicity	Data Type Components	Related Requirements
DespatchAdvice				The DespatchAdvice class is the data class that creates the advice message that the Shipper sends to the Receiver. This class inherits data directly from the class called document; which means it inherits the attributes contentVersion; creation-Date; documentStructureVersion and lastUpdateDate. DespatchAdvice has relationships with other classes as well; that allow the DespatchAdvice message to have meaning when sent to the Receiver. It is important to note that every class serves the root class DespatchAdvice. The classes that DespatchAdvice directly “touches” are in turn served by other classes that provide intelligence through direct and indirect relationships to the root class.			[BRAD Upstream Standards – Despatch; Receipt & Consumption Version 0.1.1]
			Consignment Information	This information on ConsignmentInformation for DespatchAdvice.	0..1		[BRD Exchange Traceability and Processing History Data of Beef Products (Slaughter to Retail) Version 2.50]
			DeliveryAndTransportInformation	This information on DeliveryAndTransportInformation for DespatchAdvice.	0..1		[BRAD Upstream Standards – Despatch; Receipt & Consumption Version 0.1.1][7.1.1-10; 11]
			DespatchAdviceItemContainmentLineItem	This information on DespatchAdviceItemContainmentLineItem for DespatchAdvice.	1..*		[BRD Despatch Advice Version 1.0.9.3]

Class (ABIE)	Attribute (BBIE)	Association (ASBIE)	Secondary Class	Definition	Multiplicity	Data Type Components	Related Requirements
			DespatchAdviceLogisticUnitLineItem	This information on DespatchAdviceLogisticUnitLineItem for DespatchAdvice.	1..*		[BRD Despatch Advice Version 1.0.9.3]
			DespatchInformation	This information on DespatchInformation for DespatchAdvice.	1..1		[BRD Despatch Advice Version 1.0.9.3]
			Document	Used to specify basic information about the content of the message including version number; creation date and time.	1..1		[BRD Despatch Advice Version 1.0.9.3]
		purchaseConditions	DocumentOrDocumentLineReference	Reference to the business document that describes the commercial conditions under which the goods are delivered.	0..1		[BRD Despatch Advice Version 1.0.9.3]
		purchaseOrder	DocumentOrDocumentLineReference	The identification for the order assigned by the buyer.	0..1		[BRD Despatch Advice Version 1.0.9.3]
		despatchAdviceIdentification	EntityIdentification	Unique identifier for the Despatch Advice Message.	1..1		[BRD Despatch Advice Version 1.0.9.3]
		carrier	PartyIdentification	Uniquely identifies the entity that transports the shipment.	0..1		[BRAD Upstream Standards – Despatch; Receipt & Consumption Version 0.1.1] {7.1.1-9 (opt) }
		inventoryLocation	PartyIdentification	Identification of the location where the goods will be or have been stored.	0..1		[BRAD Upstream Standards – Despatch; Receipt & Consumption Version 0.1.1] {7.1.1-8}
		pickUpLocation	PartyIdentification	Party where goods are collected or taken over by the carrier (i.e. if other than consignor).	0..1		[BRD Despatch Advice Version 1.0.9.3]

Class (ABIE)	Attribute (BBIE)	Association (ASBIE)	Secondary Class	Definition	Multiplicity	Data Type Components	Related Requirements
		receiver	PartyIdentification	A party who engages in receiving goods.	1..1		[BRAD Upstream Standards – Despatch; Receipt & Consumption Version 0.1.1]{7.1.1-4}
		shipFrom	PartyIdentification	Identification of the location from where goods will be or have been shipped.	0..1		[BRAD Upstream Standards – Despatch; Receipt & Consumption Version 0.1.1]{7.1.1-7}
		shipper	PartyIdentification	A party who engages in shipping goods.	1..1		[BRAD Upstream Standards – Despatch; Receipt & Consumption Version 0.1.1]{7.1.1-5}
		shipTo	PartyIdentification	Identification of the location to where goods will be or have been shipped.	1..1		[BRAD Upstream Standards – Despatch; Receipt & Consumption Version 0.1.1]{7.1.1-6}
		contract	Reference	The specific contract referenced by the Despatch Advice.	0..1		[BRD Exchange Traceability and Processing History Data of Beef Products (Slaughter to Retail) Version 2.50]
		declarantsCustomsIdentity	Reference	Reference to the party whose posted bond or security is being declared in order to accept responsibility for a goods declaration and the applicable duties and taxes.	0..1		[BRD Exchange Traceability and Processing History Data of Beef Products (Slaughter to Retail) Version 2.50]

Class (ABIE)	Attribute (BBIE)	Association (ASBIE)	Secondary Class	Definition	Multiplicity	Data Type Components	Related Requirements
		deliveryNote	Reference	The delivery note accompanying the despatch advice.	0..1		[BRD Exchange Traceability and Processing History Data of Beef Products (Slaughter to Retail) Version 2.50]
		productCertification	Reference	Number assigned by a governing body (or their agents) to a product which certifies compliance with a standard.	0..1		[BRD Exchange Traceability and Processing History Data of Beef Products (Slaughter to Retail) Version 2.50]
		specification	Reference	An essential technical requirement for items; materials; or services; including the procedures to be used to determine whether the requirement has been met. Specifications may also include requirements for preservation; packaging; packing; and marking.	0..1		[BRD Exchange Traceability and Processing History Data of Beef Products (Slaughter to Retail) Version 2.50]
DespatchAdviceItemContainmentLineItem				Information at the line item level contained within an item on a despatch advice.			[BRD Exchange Traceability and Processing History Data of Beef Products (Slaughter to Retail) Version 2.50] and [BRAD Upstream Standards – Despatch; Receipt & Consumption Version 0.1.1] and BRAD Despatch Advice Country of Processing and Origin Version 4

Class (ABIE)	Attribute (BBIE)	Association (ASBIE)	Secondary Class	Definition	Multiplicity	Data Type Components	Related Requirements
	countryOfLastProcessing			Indication of the country in which the trade item was processed, transformed, or proven last before its import.	0..1	ISO_3166_1Code	[BRAD Despatch Advice Country of Processing and Origin Version 4] {BR1}
	countryOfOrigin			The country code in which the goods have been produced or manufactured, according to criteria laid down for the purposes of application of the Customs tariff, of quantitative restrictions, or of any other measure related to trade	0..1	ISO_3166_1Code	[BRAD Despatch Advice Country of Processing and Origin Version 4] {BR2}
	freeGoodsQuantity			Quantity of goods which are free of charge.	0..1	Quantity. Content; Quantity Unit. Code; Quantity Unit. Code List Agency. Identifier	[BRD Exchange Traceability and Processing History Data of Beef Products (Slaughter to Retail) Version 2.50]
	quantityContained			The number of units shipped of the order unit or associated item. The unit of measure for the quantity is assumed to be the same as for the associated item. Thus the quantity must be specified in the same unit of measure as the item; e.g. case; each; etc...	1..1	Quantity. Content; Quantity Unit. Code; Quantity Unit. Code List Agency. Identifier	[BRAD Upstream Standards – Despatch; Receipt & Consumption Version 0.1.1]{7.1.1-27; 28}

Class (ABIE)	Attribute (BBIE)	Association (ASBIE)	Secondary Class	Definition	Multiplicity	Data Type Components	Related Requirements
	requestedQuantity			The quantity that was ordered or planned to be delivered.	0..1	Quantity. Content; Quantity Unit. Code; Quantity Unit. Code List Agency. Identifier	[BRD Exchange Traceability and Processing History Data of Beef Products (Slaughter to Retail) Version 2.50]
			ItemContainment	This information on ItemContainment for DespatchAdviceItemContainmentLineItem.	1..1		[BRD Exchange Traceability and Processing History Data of Beef Products (Slaughter to Retail) Version 2.50]
		locationOfLastProcessing	LocationInformation	The name and address of the last processing location in which the trade item was processed or transformed.	0..1		[BRAD Despatch Advice Country of Processing and Origin Version 4] {BR1}
		locationOfOrigin	LocationInformation	The name and address of location of origin in which the goods have been produced or manufactured, according to criteria laid down for the purposes of application of the Customs tariff, of quantitative restrictions, or of any other measure related to trade.	0..1		[BRAD Despatch Advice Country of Processing and Origin Version 4] {BR2}
			QuantityVariance	This information on QuantityVariance for DespatchAdviceItemContainmentLineItem.	0..*		[BRD Exchange Traceability and Processing History Data of Beef Products (Slaughter to Retail) Version 2.50]

Class (ABIE)	Attribute (BBIE)	Association (ASBIE)	Secondary Class	Definition	Multiplicity	Data Type Components	Related Requirements
DespatchAdviceLogisticUnitLineItem				Information on the line item contents of a single despatch unit; within the context of the despatch Advice.			[BRAD Upstream Standards – Despatch; Receipt & Consumption Version 0.1.1]
			DespatchAdviceItemContainmentLineItem	This information on DespatchAdviceItemContainmentLineItem for DespatchAdviceLogisticUnitLineItem.	0..*		[BRAD Upstream Standards – Despatch; Receipt & Consumption Version 0.1.1]{7.1.1-20; 22; 23}
			LogisticUnits	This information on LogisticUnits for DespatchAdviceLogisticUnitLineItem.	1..1		[BRAD Upstream Standards – Despatch; Receipt & Consumption Version 0.1.1]{7.1.1-20; 22; 23}
PackageInformation				To specify amount and type of logistic unit(s).			[BRD Exchange Traceability and Processing History Data of Beef Products (Slaughter to Retail) Version 2.50]
	numberOfUnits			Indicates the quantity contained within a package.	1..1	Numeric. Content	[BRD Exchange Traceability and Processing History Data of Beef Products (Slaughter to Retail) Version 2.50]
	packageType			Identifies the means of grouping of products within a shipment.	0..1	Code. Content	[BRD Exchange Traceability and Processing History Data of Beef Products (Slaughter to Retail) Version 2.50]

Class (ABIE)	Attribute (BBIE)	Association (ASBIE)	Secondary Class	Definition	Multiplicity	Data Type Components	Related Requirements
QuantityVariance				Information with regards to any difference between what was ordered and what is ready for or has been despatched.			[BRD Exchange Traceability and Processing History Data of Beef Products (Slaughter to Retail) Version 2.50]
	changeReason			To specify the reason for a change of the quantity.	1..1	Code. Content	[BRD Exchange Traceability and Processing History Data of Beef Products (Slaughter to Retail) Version 2.50]
	varianceQuantity			To specify any variances between what was ordered and what is ready for or has been despatched.	1..1	Quantity. Content;Quantity Unit. Code;Quantity Unit. Code List Agency. Identifier	[BRD Exchange Traceability and Processing History Data of Beef Products (Slaughter to Retail) Version 2.50]

5.2. Class Diagrams

Figure 5-1 Despatch Advice Class Diagram

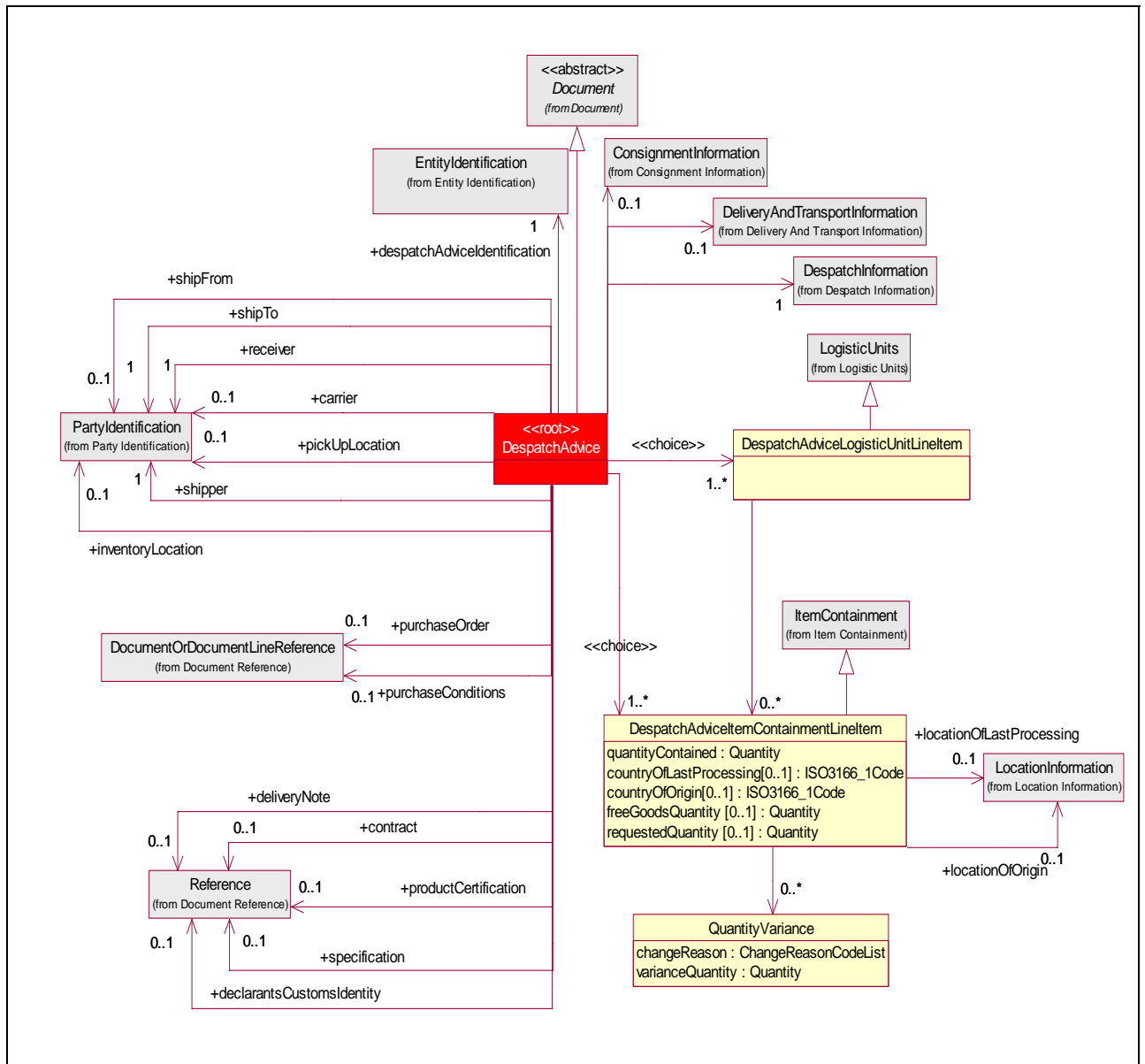
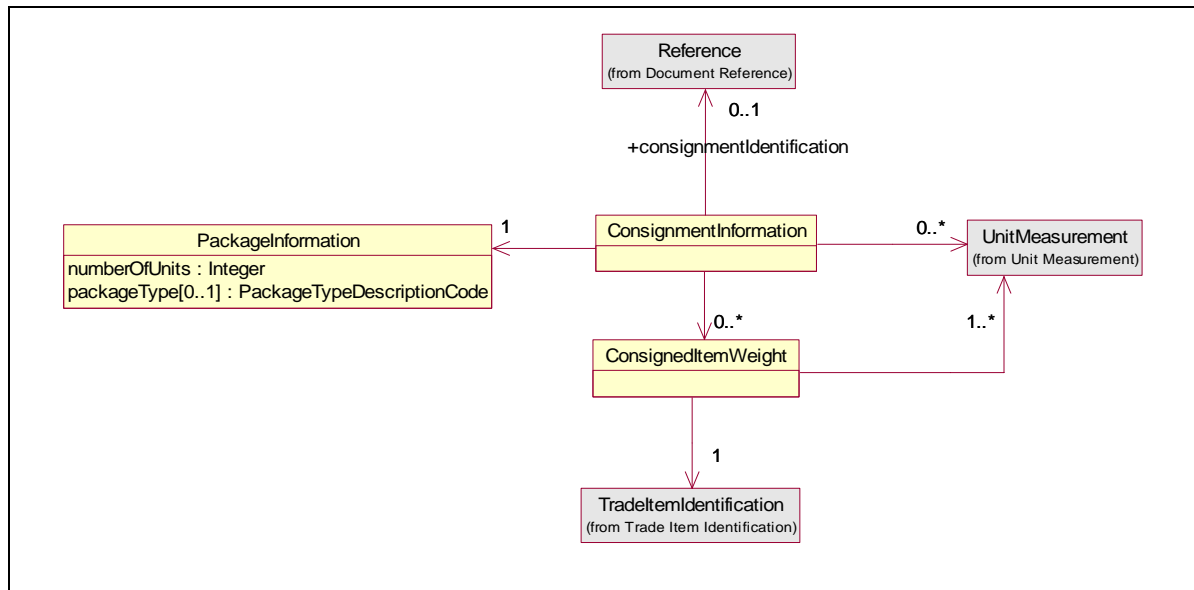
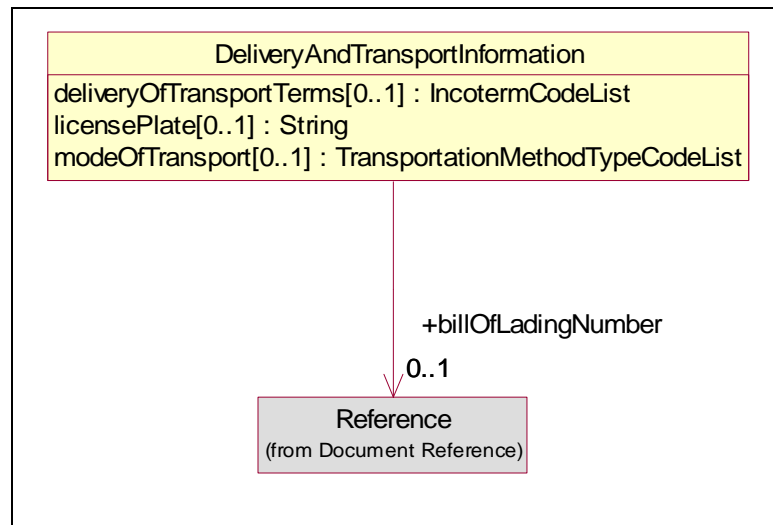


Figure 5-2 Consignment Information Class Diagram**Figure 5-3** Delivery and Transport Information Class Diagram

5.3. Code Lists

Following Code Lists are implemented in the Despatch Advice:

- Change Reason Code List (Updated missing definitions for BMS Release 2.4)
- Incoterm Code List
- Transportation Method Type Code List (Updated missing definitions for BMS Release 2.4)

5.3.1. Change Reason Code List

Code Value	Code Definition
ARTICLE_CODE_UNKNOWN	The article code is not known.
DAMAGED	If a shipment or any part thereof, is lost or damaged in transit and so received, the person making such receipt is responsible for securing proper notation of damage or shortage from the delivering carrier, on the bill of lading, so proper claims may be filed with the carrier.
ITEM_NOT_ORDERED	Item was not requested.
OUT_OF_INVENTORY	Not available for sale or use.
PACK_DIFFERENCE	There is a pack deviation from the standard or norm.

5.3.2. Incoterm Code List

Code Value	Code Definition
CFR	Cost and Freight
CIF	Cost, Insurance and Freight
CIP	Carriage and Insurance Paid To
CPT	Carriage Paid To
DAF	Delivered at Frontier
DDP	Delivered Duty Paid
DDU	Delivered Duty Unpaid
DEQ	Delivered Ex Quay
DES	Delivered Ex Ship
EXW	Ex Works
FAS	Free Alongside Ship
FCA	Free Carrier
FOB	Free On Board

5.3.3. Transportation Method Type Code List

Code Value	Code Definition
AIR	A movement of material by air
AIR_CHARTER	A movement of material by chartered aircraft.
AIR_EXPRESS	A movement of material by air express service.
AIR_FREIGHT	A movement of material by freight air
BEST_WAY_SHIPPERS_OPTION	A movement the best way, choice is left to the shipper.
BOOK_POSTAL	A movement of material by postal of or relating to the system for delivering mail
BUS	To specify that the means of transportation is a bus.
CAB	To specify that the means of transport is a taxi
CONSOLIDATION	A movement of multiple shipments to a single destination.
CONTRACT_CARRIER	An agreement between two or more parties, especially one that is written or spoken and enforceable by law.
CUSTOMER_PICKUP	Cargo will be picked up by the customer
CUSTOMER_PICKUP_OR_CUSTOMERS_EXPENSE	Cargo will be picked up by the customer, or else it will be picked up at his expense
EXPEDITED_TRUCK	A movement of material by expedited truck.
GEOGRAPHIC_RECEIVING	A collection of shipments that involve a single origin, multiple destinations, and a single trailer, and are paid under a single freight bill.
GEOGRAPHIC_RECEIVING_SHIPPING	A collection of shipments that involve a single origin, multiple destinations, and a single trailer, and are paid under a single freight bill.
GEOGRAPHIC_SHIPPING	A collection of shipments that involve a single origin, multiple destinations, and a single trailer, and are paid under a single freight bill.
INLAND_WATERWAY	Transport by which goods are moved via an inland body of water.
INTERMODAL_PIGGYBACK	A tractor trailer is placed (usually without the tractor) on a flat car or specially-designed rail car.
LESS_THAN_TRUCK_LOAD	The transportation of relatively small freight. The alternatives to LTL carriers are parcel carriers or full truckload carriers
MOTOR	A movement of material by motor carrier means a contract carrier, a common carrier or a private carrier of property or passengers by motor vehicle.
MOTOR_COMMON_CARRIER	Any person who or which undertakes, whether directly or by a lease or any other arrangement, to transport passengers or household goods.
MOTOR_FLATBED	Trailer or container without raised sides or ends.

Code Value	Code Definition
MOTOR_PACKAGE_CARRIER	A movement of material by motor package carrier.
MOTOR_TRUCKLOAD	A movement of material by motor truckload.
MOTOR_VAN	A movement of material by motor van.
MUTUALLY_DEFINED	Mutually defined transport
OCEAN	Transport by sea/ocean
PARCEL_POST	Transport by parcel postal service that handles packages.
PIPELINE	Transport by pipeline.
POOL_TO_POOL	Transport by pool to pool.
POOLED_AIR	A consolidated air shipment with other shipments into full air shipments bound for the same destination, or by pooling your shipments on one air shipment headed in a general line to all your delivery points. Either way, it means your shipments are not handled again until they arrive, which minimizes damage and loss claims and expedites transit times.
POOLED_PIGGYBACK	A consolidated movement of material by a trailer on a railcar.
POOLED_RAIL	A consolidated rail shipment with other shipments into full rail shipments bound for the same destination, or by pooling your shipments on one rail shipment headed in a general line to all your delivery points. Either way, it means your shipments are not handled again until they arrive, which minimizes damage and loss claims and expedites transit times.
POOLED_TRUCK	A consolidated shipment with other shipments into full truckloads bound for the same destination, or by pooling your shipments on one truck headed in a general line to all your delivery points. Either way, it means your shipments are not handled again until they arrive, which minimizes damage and loss claims and expedites transit times.
PRIVATE_CARRIER	A code indicating privately owned transport.
PRIVATE_PARCEL_SERVICE	A code indicating privately owned parcel service.
PRIVATE_VESSEL	A code indicating privately owned ship.
RAIL	A movement of material to the consignee via rail.
ROADRAILER	In railroad terminology a roadrailer is a highway trailer that is specially equipped for use in railroad intermodal service. The advantage of using roadrailers is that due to their construction, the trailers can be pulled directly behind other freight equipment without the use of trailer flatcars.
SEA_AIR	The cargo is being moved by more than one transport means in succession: first by ship then by plane.

Code Value	Code Definition
STEAM_SHIP	A steamboat or steamship, sometimes called a steamer, is a boat or vessel that is propelled by steam power driving a propeller or paddlewheel. The term steamboat is usually used to refer to smaller steam-powered boats working on lakes and rivers, particularly riverboats in the USA; steamship generally refers to steam powered ships capable of carrying a (ship's) boat. Nuclear powered ships and submarines use steam to drive turbines, but are not referred to as steamships or steamboats.
SUPPLIER_TRUCK	A code indicating transport by a truck owned by the supplier

6. Business Document Example

The following is an example of a despatch advice message. The message is sent out on July 31, 2007 11 AM. The message is identified with the unique identifier KC.

Parties

- Material Supplier (Shipper and Content Owner 8812345678903)
- Manufacturer (Receiver 8712345678913)
- Manufacturer Ship To (8712345678921)

Referenced Purchase Order

Purchase Order 933, from Manufacturer (8712345678913) Date 2004-04-12, Line Item 25

Despatch Information

Actual Ship Date Time: July 4, 2007 300 PM

Despatch Advice Logistic Line Item

Package Type: PE (Pallet, Modular)

Logistics Unit Identification SSCC 881234567000010112

Despatch Advice Item Containment Line Item

Country of Origin: Costa Rica

Item GTIN: 08712345678906

Quantity: 700

Delivery Note References

Referenced Date Time: April 24, 2007 T 900 AM

Referenced Identification: DN

Line Item Number: 1

7. Implementation Considerations

The Despatch Advice should also include the line sequence numbers from the documents (Purchase Order and Purchase Conditions) that can be referenced to. These line sequence numbers for referenced documents are optional.

The idea behind this is that if a despatch advice refers to one order or contract or despatch note or consignment note the reference is identified at the header level and that then applies to all item lines.

If a despatch advice is referring to more than one order or contract or despatch note or consignment note then the reference is identified at the detail level through the DetailLevelReference.

Table below illustrates references.

Despatch Advice Line Number	Reference Identification and Date	Referenced Line Number
1	Purchase Order 933, Date 2007-04-12	25
2	Purchase Order 934, Date 2007-05-12	9
3	Purchase Order 990, Date 2007-06-12	1

8. Testing

8.1. Pass / Fail Criteria

Not Applicable

8.2. Test Data

DespatchAdvice	
- creationDateTime	2007-07-31T11:00:00
- documentStatus	ORIGINAL
EntityIdentification (+despatchAdviceIdentification)	
- uniqueCreatorIdentification	KC
PartyIdentification (+contentOwner)	
- gLN	8812345678903
PartyIdentification (+shipper)	
- gLN	8812345678903
PartyIdentification (+receiver)	
- gLN	8712345678913
PartyIdentification (+shipTo)	
- gLN	8712345678921
DocumentOrDocumentReference (+purchaseOrder)	
DocumentLineReference	
lineNumber	25
DocumentReference	

DespatchAdvice	
creationDateTime	2007-07-31T00:00:00
EntityIdentification	
- uniqueCreatorIdentification	933
PartyIdentification (+contentOwner)	
- gLN	8712345678913
DespatchInformation	
ActualShipping	
- actualShipDateTime	2007-07-04T15:00:00
DespatchAdviceLogisticUnitLineItem *1	
- packageType	PE (pallet, modular)
LogisticUnitIdentification	
serialShipmentContainerCode	881234567000010112
DespatchAdviceItemContainmentLineItem *1.1	
- quantityContained (value, unitOfMeasure)	700
- countryOfOrigin	Costa Rica
Item Containment	
- lineItemNumber	1
TradeItemIdentification (+containedItemIdentification)	
- gTIN	08712345678906
DetailLevelReference (+deliveryNote)	
- lineItemNumber	001
Reference	
- referenceDateTime	2007-04-24T09:00:00
- referenceIdentification	DN

9. Appendices

Not Applicable

10. Summary of Changes

Change	BSD Version	Associated CR Number
DespatchAdvice → DocumentReference: <ul style="list-style-type: none"> Changed role name orderReference into purchaseOrder Changed role name purchaseConditionReference into purchaseConditions 	0.2.2	
<ul style="list-style-type: none"> Change to data types for measurementUnitCodeList in class diagrams Change of cardinality of carrier to 0..1 as per requirements in Dispatch Advice Class Diagram and GDD Report. 	2.2.2	
Change to class diagram and GDD. Class: DespatchAdviceItemContainmentLineItem added attributes <ul style="list-style-type: none"> countryOfLastProcessing[0..1]:ISO3166_1Code countryOfOrigin[0..1]:ISO3166_1Code Class: DespatchAdviceItemContainmentLineItem added association to LocationInformation <ul style="list-style-type: none"> +locationOfLastProcessing[0..1] +locationOfOrigin[0..1] GDD Added Related Requirements in the GDD. Defined missing definitions in the GDD. specification Code Lists Defined missing code values for ChangeReasonCodeList Defined missing code values for TransportationMethodTypeCodeList <ul style="list-style-type: none"> Replaced POOLED_PIGGYPACK code value with POOLED_PIGGYBACK. 	3.0.0	07-000103
Class Diagram Remove DespatchAdvice association to DocumentReference. And replace with DespatchAdvice association to DocumentOrDocumentLineReference. <ul style="list-style-type: none"> purchaseOrder purchaseConditions This provides the ability to reference purchase order and purchase conditions to the referenced line item in the despatch advice header level.	3.1.0	07-000271
Updated based on Peer Review 9601 Applied template fonts and headers.	3.1.1	None
Public Review	3.1.2	None
eCom BRG eBallot Approved Update BMS to Approved	3.1.3	None