



Business Message Standard (BMS) Replenishment Proposal

BMS Release: 2.5.0, BRG Name: eCom

Issue 2.0.2, 06-Feb-2009



Document Summary

Document Item	Current Value
Document Title	Business Message Standard (BMS)
BMS Name	Replenishment Proposal
BMS Release	2.5.0
BRG Name	eCom
Document Number	Issue 2.0.2
Date Last Modified	06-Feb-2009
Status	Approved
Owner	BRG: eCom
BMS Template Version	1.9

Change Request Reference

Date of CR Submission to GSMP:	CR Submitter(s):	Refer to Change Request (CR) Number(s):
20 –Aug-2008	John Ryu, GS1	08-000209
8- Aug – 2007	Eric Maree, Accenture	07-000309
05-Nov-2004	GS1	04-000211

Business Requirements Document (BRAD) Reference

BRAD Title:	BRD Date:	BRAD Version
BRAD Upstream Standards – Demand & Supply Signals	01-Nov-2004	0.1.0
Replenishment – Business Requirement Document	30-Mar-2004	1.0.0

Document Change History

Date of Change	Version	Changed By	Reason for Change	Summary of Change	Model Build #
31-Dec-2004	1.0.0	Eric Kauz	Initial Version in BMS/BSD template	Migration of BRD to standard BMS/BSD format	NOT APPLICABLE
12-Jan-2005	1.1.0	Coen Janssen	UIM project	Draft version	NOT APPLICABLE
20.-Jan-2005	1.1.1	Coen Janssen	Review		NOT APPLICABLE
14-Feb-2005	1.1.2	Coen Janssen	Motion to public review	Some corrections	
07-Apr-2005	1.2.0	Coen Janssen	Public Review Plan BRG February 21 – March 1 2005	Changes to functionality: See chapter 11.	

Date of Change	Version	Changed By	Reason for Change	Summary of Change	Model Build #
21-Apr-2005	1.2.1	Coen Janssen	Vienna meeting	Added some further □ clarifications to chapter 11.	
30-May-2005	1.2.2	Coen Janssen	Peer review comments	Functional changes see chapter 11. Corrected the GDD report. Corrected the Use Case description. Changed the footer text.	
09-Jun-2005	1.2.3	Coen Janssen	Updated GDD official names.		
21-Jul-2005	1.2.4	Coen Janssen	Technical Design Public Review	Several cosmetic changes Functional change, see paragraph 1.10	
25-Apr-2007	1.2.5	Giovanni Biffi	Editorial Changes	Minor Editorial Changes to the Document	NOT APPLICABLE
29-Aug-2008	2.0.0	John Ryu	BMS Release 2.5.0	Description provided in Summary of Changes	NOT APPLICABLE
01-Dec -2008	2.0.1	Lisa Herrick	BMS Release 2.5.0 Final Public Review	Noted in summary of changes	NOT APPLICABLE
01-Dec-2008	2.0.2	John Ryu	BMS Release 2.5.0 Final Public Review	Noted in summary of changes	NOT APPLICABLE
06-Feb-2009	Issue 2.0.2	Lisa Herrick	BMS Release 2.5.0 eBallot Approved	Noted in summary of changes	Not Applicable

Disclaimer

Whilst every effort has been made to ensure that the guidelines to use the GS1 standards contained in the document are correct, GS1 and any other party involved in the creation of the document HEREBY STATE that the document is provided without warranty, either expressed or implied, of accuracy or fitness for purpose, AND HEREBY DISCLAIM any liability, direct or indirect, for damages or loss relating to the use of the document. The document may be modified, subject to developments in technology, changes to the standards, or new legal requirements. Several products and company names mentioned herein may be trademarks and/or registered trademarks of their respective companies.

Table of Contents

1. Business Domain View	5
1.1. Problem Statement / Business Need	5
1.2. Objective.....	5
1.3. Audience.....	5
1.4. References	5
1.5. Acknowledgements	6
1.5.1. BRG Work Group	6
1.5.2. Design Team Members	9
2. Business Context	10
3. Additional Technical Requirements Analysis.....	10
3.1. Technical Requirements (optional).....	10
4. Business Transaction View	10
4.1. Business Transaction Use Case Diagram	10
4.2. Use Case Description.....	11
4.3. Business Transaction Activity Diagram(s).....	11
4.4. Business Transaction Sequence Diagram(s).....	11
5. Information Model (Including GDD Report)	12
5.1. GDD Report.....	12
5.2. Class Diagrams	16
5.3. Code Lists.....	16
6. Business Document Example	16
7. Implementation Considerations	19
8. Testing	19
8.1. Pass / Fail Criteria	19
8.2. Test Data	20
9. Appendices	20
10. Summary of Changes.....	20

1. Business Domain View

1.1. Problem Statement / Business Need

The replenishment process in broad sense addresses the business practice to exchange data between a buying party (e.g. buyer) and a supplying party (e.g. seller/supplier) related to the future demand of finished or semi-finished products, ingredients, packaging and raw materials.

Between retailer and manufacturer (the downstream supply chain) the data is basically based on future demand based on finished products and time series but it can also be restricted to actual sales date for a certain period of time. Feed-back from the manufacturer on his availability to deliver is required, where available inventories (of both sides) are taken in account.

Between manufacturer and material supplier (the upstream supply chain) the data is basically based on material requirements for production and the timing for it, and also the feedback from the material supplier on his availability to deliver and the schedule for delivery. Inventories (on both sides) are taken into account for the actual delivery schedule.

Based on the delivery schedule (replenishment proposal), a transport and shipping planning can be derived.

1.2. Objective

To supply the detail design of the (specific) business transaction needed to meet the requirements of the referenced BRAD(s) and change requests.

1.3. Audience

Anyone involved in the replenishment process with another party in the (extended) supply chain process. These parties basically are retailers, manufactures and suppliers of ingredients, packaging and raw materials. But can also be parties in between like wholesalers or logistic service providers managing warehouses.

1.4. References

	Reference Name	Description
[Ref1]	BMS Common Library Release 2.5.0	The documented design of components that are used in multiple messages.
[Ref2]	BRAD Upstream Standards - Demand & Supply Signals 0.1.0	
[Ref3]	Replenishment – Business Requirement Document 1.0.0	

1.5. Acknowledgements

1.5.1. BRG Work Group

First Name	Last Name	Company
Kerry	Angelo	RosettaNet
Ryohei	Ariga	Procter & Gamble Co. (Japan)
Alison	Bartlet	Commport Communications Int'l Inc.
Lorraine	Bartrop	Whitbread Group, PLC
Martin	Beno	GS1 Slovakia
Mike	Blank	3663 First for Foodservice
Kyra	Blankenstein	GS1 Netherlands
Zsolt	Bócsi	GS1 Hungary
Shaun	Bosson	GS1 New Zealand
Dave	Botherway	Melbourne PC User Group
Miriam	Burke	Procter & Gamble Co.
Jean-Luc	Champion	GS1 Global Office
Jasmine	Chew	RosettaNet
Richard	Chresta	GS1 Switzerland
Fatou	COULIBALY	GS1 France
Troy	Denyer	GS1 Australia
Arne	Dicks	GS1 Germany
Marilyn	Dodd	3M Company
Sue	Donarski	Schneider National
John	Duker	Procter & Gamble Co.
Karina	Duvinger	GS1 Sweden
Carol	Edison	General Mills, Inc.
Hussam	El-Leithy	RosettaNet
Chris	Emment	Brakes Food Service
Karen	Feiling	GS1 South Africa
Brian	Finale	UPS
Klaus	Foerderer	GS1 Germany
David	Freedman	Inovis Inc. (US)
Wayne	Gingerich	Werner Enterprises
Joel	Goldberg	Rosenthal & Rosenthal, Inc.
Anders	Grangard	GS1 Global Office

First Name	Last Name	Company
Sara	Halfmann	Best Buy Co., Inc.
Bill	Hamilton	Kavi
Tom	Heist	GS1 Global Office
John	Hervey	NACS/PCATS
Douglas	Hill	GS1 Denmark
Rob	Hoffman	Hershey Company (The)
Norbert	Horst	GS1 Germany
Sandra	Hurd	CIT Group (The)
Mark	Ingram	Anheuser Busch
Coen	Janssen	GS1 Netherlands
Jim	Jennings	Procter & Gamble Co.
Tan	Jin Soon	GS1 Singapore
Fred	Kempkes	Unilever N.V.
Brendan	Kernan	GS1 Ireland
Atsushi	Koizumi	Ajinomoto Co., Inc.
Vladimir	Kozovic	GS1 Serbia
Anne-Claire	Krid	GS1 France
Carolyn	Kroll	1SYNC
Frank	Kuhlmann	GS1 Germany
Priya	Kunthasami	GS1 New Zealand
CHRISTIAN	LAPORTE	GAZ DE FRANCE
Rita	Laur	GS1 Canada
Sophie	Le Pallec	GS1 France
Guillaume	Lecomte	Firmenich
Sean	Lockhead	GS1 Global Office
Bill	Lohse	Data-Tronics Corporation
Ana Paula	Maniero	GS1 Brasil
Eric	Maree	Accenture Supply Chain Services
Michal	Martinko	Hewlett-Packard
Robert	McHugh	Menlo Worldwide
John	Meier	Giant Food Stores, Inc.
Jeff	Melcher	Army & Air Force Exchange Service
Juan	Mengide	GS1 Argentina
Cyndi	Metallo	Gladson Interactive

First Name	Last Name	Company
Carol	Miklusak	1SYNC
James	Morrison	Whirlpool Corporation
Dana	Morton	FedEx
Hirokazu	Nagai	Japan Pallet Rental Corporation
Frank	Napoli	LMI
Corinne	Narbaïts-Jauréguy	GS1 France
Eileen	Naused	McCormick & Company, Inc.
Debra	Noyes	Johnsonville Sausage, Inc
Hideaki	Ohata	Nomura Research Institute, Ltd
Mike	Osiecki	Best Buy Co., Inc.
Phil	Oxley	Compass Group, UK and Ireland Ltd
Ju Young	Park	GS1 Korea
Esther	Peelen	GS1 Netherlands
Steven	Pereira	GS1 Australia
Uxio	Perez Rodriguez	TLR Soft
Marie	Perry	Coca-Cola Enterprises
Joao	Picoito	GS1 Portugal
Leon	Plaksin	GS1 Australia
Laurie	Policastro	GS1 Community Room Staff
Valerie	Post	Link Snacks Inc, Jack Links Beef Jerky
Natascha	Pottier	GS1 France
Joerg	Pretzel	GS1 Germany
Glenn	Pride	1SYNC
Rich	Richardson	GS1 US
Steven	Robba	Johnson & Johnson
Pere	Rosell	GS1 Spain
Steven	Rosenberg	GS1 US
Steve	Rowland	GS1 New Zealand
John	Ryu	GS1 Global Office
Hugo	Sabogal	GS1 Colombia
Tracy	Satcho	Eaton Electrical
Akikazu	Sato	Kao Corporation
Kazuya	Sato	GS1 Japan
Sue	Schmid	GS1 Australia

First Name	Last Name	Company
Christian	Schneider	GS1 Switzerland
Jon	Sharratt	Target Corporation
Jeanne	Shavlik-Bork	Kimberly-Clark Corporation
Mary	Shaw	IDEA (Canada)
Emilie	SION	GS1 France
Matthew	Smith	Bunnings Group Limited
Gabriel	Sobrinho	GS1 Netherlands
Stef	Spaan	GS1 Netherlands
Roman	Strand	GS1 Germany
Gina	Tomassi	PepsiCo
Dale	Turner	MediaLibrary Pty Ltd
Monica	Van Haren	Mars, Inc.
Krisztina	Vatai	GS1 Hungary
Philippe	Vervaet	GS1 Global Office
Claude	Viman	Johnson & Johnson
Akihiro	Watanabe	Izumiya Co., LTD
Sylvia	Webb	GEFEG US
Shan	Welch	GS1 UK
Jan	Westerkamp	GS1 Netherlands
Mary	Wilson	GS1 US
Bekki	Windsperger	Best Buy Co., Inc.
Chi-Wei	Yang	UPS
Marc	Yarbrough	Cadbury plc - North America
Greg	Zwanziger	SUPERVALU

1.5.2. Design Team Members

Function	Name	Organisation
Modeler	John Ryu	GS1
XML Technical Designer	Dipan Anarkat	GS1
EANCOM Technical Designer	NOT APPLICABLE	
Peer Reviewer	Eric Kauz	GS1

2. Business Context

Context Category	Value(s)
Industry	All
Geopolitical	All
Product	All
Process	Plan
Official Constraints	None
Roles	Buyer, Seller
System Capabilities	EANCOM, XML

3. Additional Technical Requirements Analysis

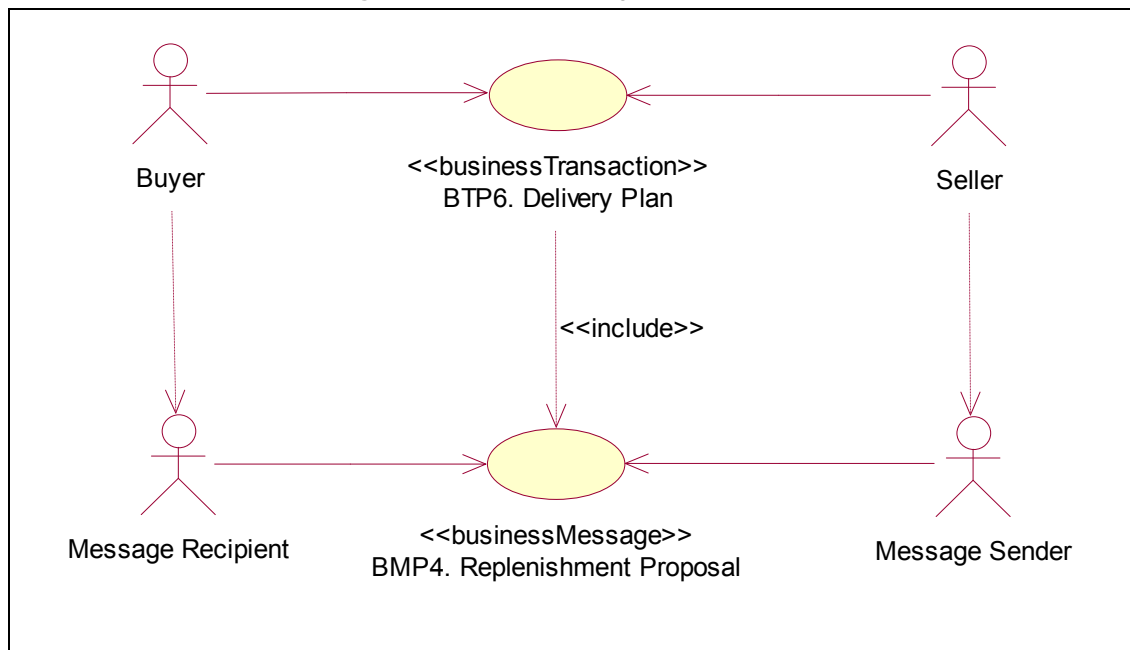
3.1. Technical Requirements (optional)

Not Applicable

4. Business Transaction View

4.1. Business Transaction Use Case Diagram

Figure 4-1 Use Case Diagram: Business Transaction



4.2. Use Case Description

Use Case ID	BTP6									
Use Case Name	Delivery Plan									
Use Case Description	The Delivery Plan is sent by the supplier and communicates to the buyer the quantities of which items will be delivered when & where by the supplier.									
Actors (Goal)	Seller: To send the Delivery Plan. Buyer: To receive the Delivery Plan.									
Performance Goals										
Preconditions	Delivery Plan: CALCULATED									
Post conditions	Delivery Plan: COMMUNICATED									
Scenario	<div><div>Begins when: Seller has calculated the delivery plan.</div><div>Continues with:<table><tr><th>Step #</th><th>Actor</th><th>Activity Step</th></tr><tr><td>1.</td><td>Seller</td><td>Sends Replenishment Proposal message to the Buyer.</td></tr><tr><td>2.</td><td>Buyer</td><td>Receives Replenishment Proposal message</td></tr></table></div><div>Ends when: Buyer receives Replenishment Proposal message</div></div>	Step #	Actor	Activity Step	1.	Seller	Sends Replenishment Proposal message to the Buyer.	2.	Buyer	Receives Replenishment Proposal message
Step #	Actor	Activity Step								
1.	Seller	Sends Replenishment Proposal message to the Buyer.								
2.	Buyer	Receives Replenishment Proposal message								
Alternative Scenario	Not Applicable									
Guidelines	Not Applicable									

4.3. Business Transaction Activity Diagram(s)

NOT APPLICABLE

4.4. Business Transaction Sequence Diagram(s)

NOT APPLICABLE

5. Information Model (Including GDD Report)

5.1. GDD Report

Class (ABIE)	Attribute (BBIE)	Association (ASBIE)	Secondary Class	Official Dictionary Entry Name	Definition	Multiplicity	Data Type Components	Related Requirements	Facets
ReplenishmentProposal				Replenishment Proposal. Details	Contains the seller delivery or production plan for the buyer for given trade items and locations for specific time periods.				
	replenishmentProposalDocumentType			Replenishment Proposal. Replenishment Proposal Document Type. Replenishment Proposal Document Type_ Code	Contains the type of replenishment plan; production or delivery.	1..1	Code. Content	Replenishment – Business Requirement Document 1.0.0	Facets constrained by code list values
	structureType			Replenishment Proposal. Structure Type. Structure Type List_ Code	Contains the type of grouping and sequence of the business document.	1..1	Code. Content		Facets constrained by code list values
		materialRequirementsPlanner	Contact	Replenishment Proposal. Material Requirements Planner. Contact	Contains the name or ID of the person or department responsible for the planning at the buyer side.	0..1		BRAD Upstream Standards - Demand & Supply Signals 0.1.0 {7.8.1-10}	
			Document	Replenishment Proposal. Inheritance. Document	This information on Document for ReplenishmentProposal.	1..1		BRAD Upstream Standards - Demand & Supply Signals 0.1.0 {7.8.1-2+3}	
		replenishmentRequest	DocumentReference	Replenishment Proposal. Replenishment Request. Document Reference	Contains reference to the replenishment request on which the proposal has been based.	0..1		Replenishment – Business Requirement Document 1.0.0	

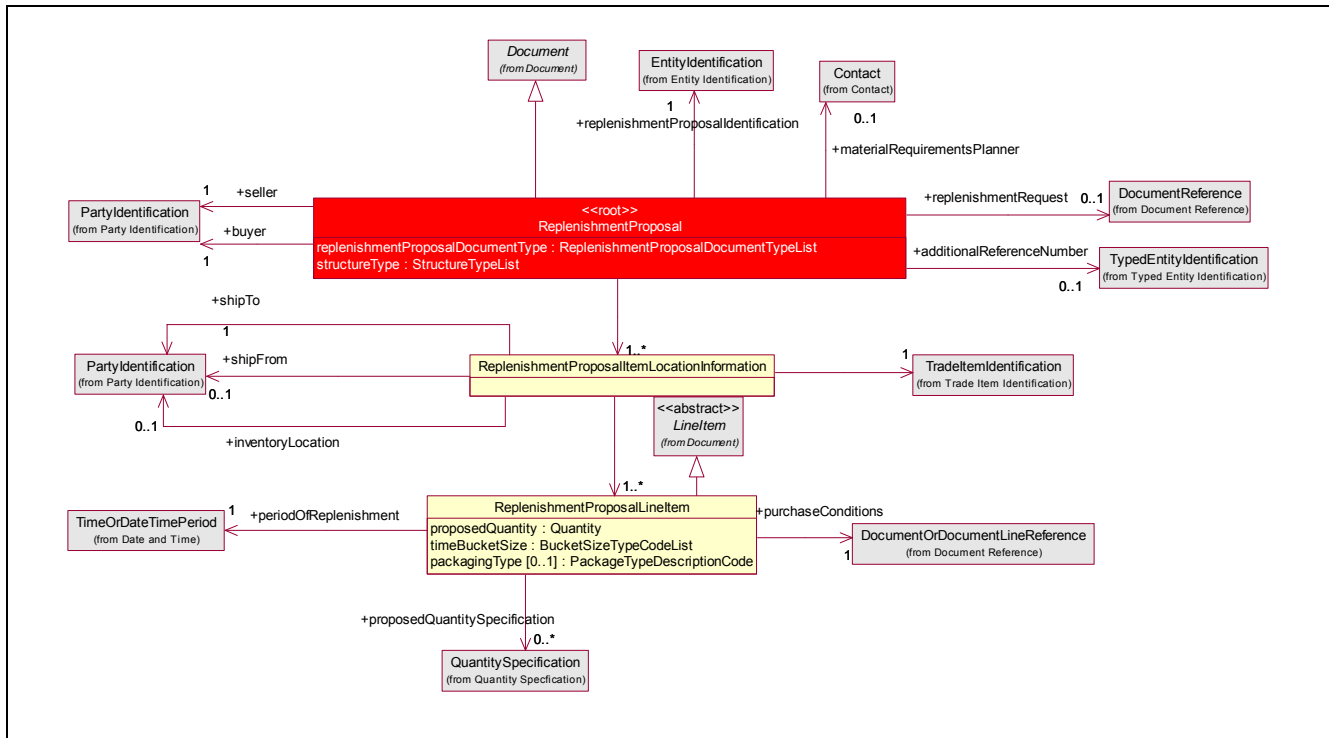
Class (ABIE)	Attribute (BBIE)	Association (ASBIE)	Secondary Class	Official Dictionary Entry Name	Definition	Multiplicity	Data Type Components	Related Requirements	Facets
		replenishmentProposalIdentification	EntityIdentification	Replenishment Proposal. Replenishment Proposal_ Identification. Entity Identification	Unique replenishment proposal number assigned by supplying party	1..1		BRAD Upstream Standards - Demand & Supply Signals 0.1.0 {7.8.1-1}	
		buyer	PartyIdentification	Replenishment Proposal. Buyer. Party Identification	Contains the identification of the party that is buying the goods.	1..1		BRAD Upstream Standards - Demand & Supply Signals 0.1.0 {7.8.1-5}	
		seller	PartyIdentification	Replenishment Proposal. Seller. Party Identification	Contains the identification of the party that is selling the goods.	1..1		BRAD Upstream Standards - Demand & Supply Signals 0.1.0 {7.8.1-6}	
		additionalReferenceNumber	TypedEntityIdentification	Replenishment Proposal. Additional Reference. Typed_ Entity Reference. Details	Assigned by buying party. Includes date and reference number.	0..1		Replenishment – Business Requirement Document 1.0.0	
			ReplenishmentProposalItemLocationInformation	Replenishment Proposal. Association. Replenishment Proposal Item Location Information	This information on Replenishment Proposal Item Location Information for ReplenishmentProposal.	1..*		Replenishment – Business Requirement Document 1.0.0	
ReplenishmentProposalItemLocationInformation				Replenishment Proposal Item Location Information. Details	Contains the replenishment plan for given trade items and locations for specific time periods.				
		inventoryLocation	PartyIdentification	Replenishment Proposal Item Location Information. Inventory Location. Party Identification	Identification of the physical place at the receiving side where the items are to be stored.	0..1		BRAD Upstream Standards - Demand & Supply Signals 0.1.0 {7.8.1-9}	
		shipFrom	PartyIdentification	Replenishment Proposal Item Location Information. Ship From. Party Identification	Contains the identification of the location wherefrom the required goods will be delivered.	0..1		BRAD Upstream Standards - Demand & Supply Signals 0.1.0 {7.8.1-8}	

Class (ABIE)	Attribute (BBIE)	Association (ASBIE)	Secondary Class	Official Dictionary Entry Name	Definition	Multiplicity	Data Type Components	Related Requirements	Facets
		shipTo	PartyIdentification	Replenishment Proposal Item Location Information. Ship To. Party Identification	Contains the identification of the location whereto the required goods will be delivered.	1..1		BRAD Upstream Standards - Demand & Supply Signals 0.1.0 {7.8.1-7}	
			ReplenishmentProposalLineItem	Replenishment Proposal Item Location Information. Replenishment Proposal Line Item	This information on ReplenishmentProposalLineItem for ReplenishmentProposalItemLocationInformation.	1..*			
			TradeItemIdentification	Replenishment Proposal Item Location Information. Association. Trade Item Identification	This information on TradeItemIdentification for ReplenishmentProposalItemLocationInformation.	1..1		BRAD Upstream Standards - Demand & Supply Signals 0.1.0 {7.8.1-12}	
ReplenishmentProposalLineItem				Replenishment Proposal Line Item. Details	Contains the planned quantities per time bucket.				
	packagingType			Replenishment Proposal Line Item. Packaging Type. Code	Contains the kind of logistic unit in which the goods will be delivered.	0..1	Code. Content Code List. Agency. Identifier Code List. Agency Name. Text	Replenishment – Business Requirement Document 1.0.0	Facets constrained by code list values
	proposedQuantity			Replenishment Proposal Line Item. Proposed Quantity. Quantity	The number of units planned to be replenished.	1..1	Quantity. Content Quantity Unit. Code Quantity Unit. Code List Agency. Identifier	BRAD Upstream Standards - Demand & Supply Signals 0.1.0 {7.8.1-13 + 14}	No Restrictions
	timeBucketSize			Replenishment Proposal Line Item. Time Bucket Size. Bucket Size_ Code	Contains a code describing the size of the planning period.	1..1	Code. Content	BRAD Upstream Standards - Demand & Supply Signals 0.1.0 {7.8.1 Missing requirement}	Facets constrained by code list values
		purchaseConditions	DocumentOrDocumentLineReference	Replenishment Proposal Line Item. Purchase Conditions. Document Or Document Line Reference	Contains a reference to the commercial agreement under which the goods are supplied.	1..1		BRAD Upstream Standards - Demand & Supply Signals 0.1.0{7.8.1-4}	

Class (ABIE)	Attribute (BBIE)	Association (ASBIE)	Secondary Class	Official Dictionary Entry Name	Definition	Multiplicity	Data Type Components	Related Requirements	Facets
			LineItem	Replenishment Proposal Line Item. Inheritance. Line Item	This information on LineItem for ReplenishmentProposalLineItem.	1..1		BRAD Upstream Standards - Demand & Supply Signals 0.1.0 {7.8.1-11}	
		proposedQuantitySpecification	QuantitySpecification	Replenishment Proposal Line Item. Proposed Quantity Specification. Quantity Specification	Contains additional quantity information for the time bucket. Example: In Transit, Produced.	0..*		Replenishment – Business Requirement Document 1.0.0	
		periodOfReplenishment	TimeOrDateTimePeriod	Replenishment Proposal Line Item. Period Of Replenishment. Time Or Date Time Period	Contains the start and end dates and optionally start and end times of the time bucket.	1..1		BRAD Upstream Standards - Demand & Supply Signals 0.1.0{7.8.1-15+16+17+18}	

5.2. Class Diagrams

Figure 5-1 Class Diagram: Replenishment Proposal



Note: Reference Common Library Business Message (BMS) Release 2.5.0 for all common information.

5.3. Code Lists

Note: Reference Common Library Business Message Release 2.5.0 for all Code Lists

6. Business Document Example

The following is an example of a delivery plan message. The message is sent out on January 11th at 11 AM. The message is identified with the unique identifier 20050014. The content owner is the sending party, in this case the material supplier (Seller 8812345678901).

The delivery plan is sent by the material supplier (Seller 8812345678901) to the manufacturer (Buyer 8712345678911).

For informational purposes the material supplier includes the name of the material requirements planner of the manufacturer (Mr. Kramer).

The delivery plan is for one delivery site (Ship to 8712345670001), one supplier site (Ship from 8712345678960). For one of the products there is a specific storage location specified (Inventory location 8712345670077). It has an additional seller assigned id (ROTTERDAM-01).

The delivery plan contains two items: Item A (GTIN 08712345678901) and item B (GTIN 08712345678920 and buyer item number AB77770004). Item A has two planned deliveries:

- on February 11th of 1000 units of which 500 units are in transit.
- on February 12th of 200 units.

The contract used for this product (2004000012) issued by the material supplier. Within the contract line 23 refers to this item.

Item B has one planned delivery on February 9th of 500 units. This needs to be delivered between 8 AM and 9 AM.

The contract used for this product (2004000012) issued by the material supplier. Within the contract line 25 refers to this item.

ReplenishmentProposal	
- creationDateTime	2005-01-11T11:00:00
- documentStatus	ORIGINAL
- replenishmentProposalType	DELIVERY_PLAN
- structureType	LOCATION_BY_ITEM
EntityIdentification (+ReplenishmentProposalIdentification)	
- uniqueCreatorIdentification	20050014
PartyIdentification (+contentOwner)	
- gLN	8812345678901
PartyIdentification (+seller)	
- gLN	8812345678901
PartyIdentification (+buyer)	
- gLN	8712345678911
Contact (+materialRequirementsPlanner)	
MultiDescription (+personOrDepartmentName)	
- description (language, text)	EN, KRAMER
ReplenishmentProposalItemLocationInformation *1	
PartyIdentification (+shipTo)	
- gLN	8712345670001
PartyIdentification (+shipFrom)	
- gLN	8712345678960
TradeItemIdentification	
- gTIN	08712345678901
ReplenishmentProposalLineItem *1.1	
- lineItemNumber	1
- timeBucketSize	DAY
- proposedQuantity (value, unitOfMeasure)	1000
TimeOrDateTimePeriod (+requirementsPeriod)	

ReplenishmentProposal	
TimePeriod	
- startDate	2005-02-11
- endDate	2005-02-11
DocumentOrDocumentLineReference (+purchaseConditions)	
DocumentLineReference	
- lineNumber	23
DocumentReference	
- entityType	PURCHASE_CONDITIONS
EntityIdentification	
- uniqueCreatorIdentification	2004000012
PartyIdentification (+contentOwner)	
- gLN	8812345678901
QuantitySpecification (+proposedQuantitySpecification)	
- quantitySpecificationType	IN_TRANSIT
- specificQuantity (value, unitOfMeasure)	500
ReplenishmentProposalLineItem *1.2	
- lineNumber	2
- timeBucketSize	DAY
- proposedQuantity (value, unitOfMeasure)	200
TimeOrDateTimePeriod (+requirementsPeriod)	
TimePeriod	
- startDate	2005-02-12
- endDate	2005-02-12
DocumentReference (+purchaseConditions)	
- entityType	PURCHASE_CONDITIONS
EntityIdentification	
- uniqueCreatorIdentification	2004000012
PartyIdentification (+contentOwner)	
- gLN	8812345678901
DocumentLineReference	
- lineNumber	2
ReplenishmentProposalItemLocationInformation *2	
PartyIdentification (+shipTo)	
- gLN	8712345670001
PartyIdentification (+shipFrom)	
- gLN	8712345678960

ReplenishmentProposal	
PartyIdentification (+InventoryLocation)	
- gLN	8712345670077
AdditionalPartyIdentification	
AdditionalPartyIdentificationType	SELLER_ASSIGNED_IDENTIFIER_FOR_A_PARTY
AdditionalPartyIdentificationValue	ROTTERDAM-01
TradeItemIdentification	
- gTIN	08712345678920
AdditionalTradeItemIdentification	
AdditionalTradeItemIdentificationType	BUYER_ASSIGNED
AdditionalTradeItemIdentificationValue	AB77770004
ReplenishmentProposalLineItem *2.1	
- lineItemNumber	3
- timeBucketSize	DAY
- proposedQuantity (value, unitOfMeasure)	500
TimeOrDateTimePeriod (+requirementsPeriod)	
DateTimePeriod	
- startDate	2005-02-09T08:00:00
- endDate	2005-02-09T09:00:00
DocumentOrDocumentLineReference (+purchaseConditions)	
DocumentLineReference	
- lineItemNumber	25
DocumentReference (+purchaseConditions)	
- entityType	PURCHASE_CONDITIONS
EntityIdentification	
- uniqueCreatorIdentification	2004000012
PartyIdentification (+contentOwner)	
- gLN	8812345678901

7. Implementation Considerations

NOT APPLICABLE

8. Testing

8.1. Pass / Fail Criteria

NOT APPLICABLE

8.2. Test Data

NOT APPLICABLE

9. Appendices

NOT APPLICABLE

10. Summary of Changes

Change	BMS Version	Associated CR
Section 7.3 Added ACTUAL_PRODUCTION as code value to ReplenishmentProposalDocumentTypeList	1.2.0	CR04-000211
Section 7 Modified QuantitySpecification class (part of Common Library) to include an optional association to the AdditionalItemData class.	1.2.1	CR04-000211
Replaced associations to TypedEntityIdentification with DocumentReference (+replenishmentRequest) and Reference (+additionalReference) Removed PackagingTypeList as a data type. Instead PackagingTypeDescriptionCodeList will be used.	1.2.2	CR04-000211
Paragraph 1.5: ReplenishmentProposalLineItem: Association to DocumentReference (+purchaseConditions) was changed into DocumentOrDocumentLineReference (+purchaseConditions).	1.2.4	CR04-000211
Upgrade for BMS release 2.5.0 Needed to upgrade as Replenishment Request was issued and Replenishment Proposal is needed for implementation.	2.0.0	CR 08-000209
For BMS Release 2.5.0 <ul style="list-style-type: none"> Prep document for public review on 01-Dec-2008 Remove Code Lists & Add notes to reference Common Library BMS for Code Lists and Common Information. 	2.0.1	Not Applicable
Stop Gap Quality Control Based on December 3 2008 eCom BRG Teleconference. The decision was to change UML to match XML for backward compatibility. UML and GDD changed FROM: ReplenishmentProposal+additionalReferenceNumber(0..1) Reference TO: ReplenishmentProposal+additionalReferenceNumber(0..1) TypedEntityIdentification	2.0.2	Not Applicable
For BMS Release 2.5.0 <ul style="list-style-type: none"> eBallot Approved, Updated BMS to 'Approved' Status Update version to 'Issue' 	Issue 2.0.2	Not Applicable