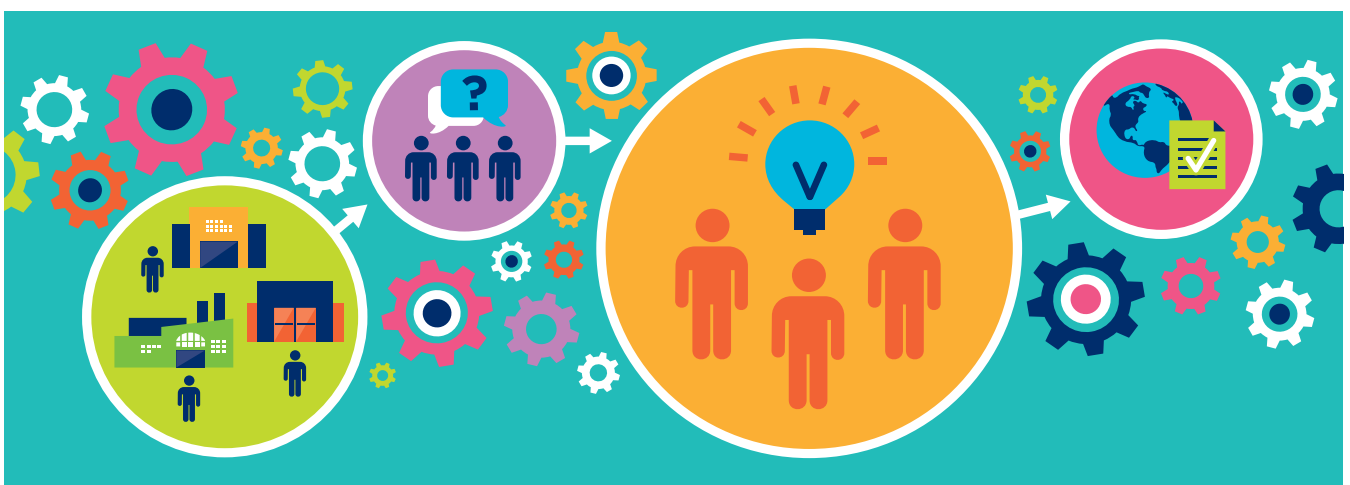


Setting the standard for solving business problems

Join the GS1 Global Standards Management Process (GSMP)



Are business challenges holding back your company's full potential and growth? You are not alone. Business is easier when you speak the same language as your customers, suppliers and partners. Though we all work in our own way, problems and differences become solutions when we all work together. That's where GS1 can help.

The GSMP is a community-based forum for businesses facing similar problems to work together and develop standards-based solutions to address them. Standards created by industry, for industry.

A neutral participant, GS1 facilitates dialogue and solutions among a collection of business and technical people from nearly sixty countries and representing industries ranging from retail and consumer goods to fresh foods to healthcare to transport and logistics to government and more.

Large or small, all members share a seat at the table to ensure that their business is heard and have a role in shaping the future of industry.

"It is the only sustainable way to create win/win situations along the entire supply chain... Join the community. It's cool to design the future and very satisfying to achieve the possible benefits with your supply chain partners."

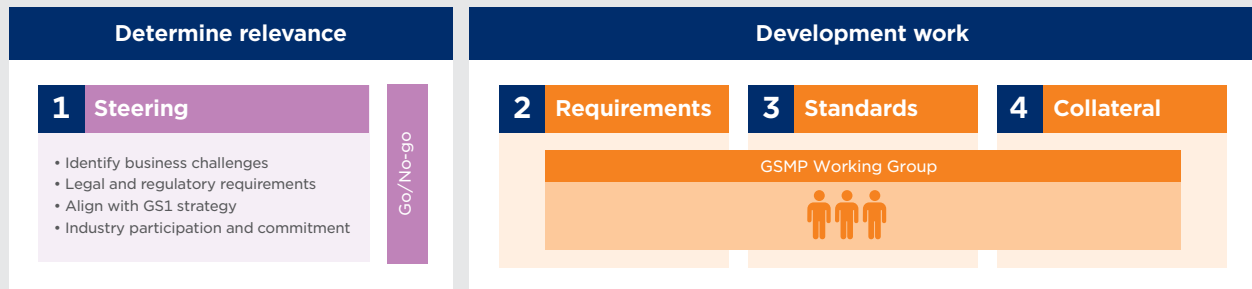
Joachim Wilkins
Supply Chain Development
C&A Buying GmbH Co. KG

"Getting involved in standards development is a way to learn. I also want to influence the outcome of standards as they directly impact our business and the industry."

Brad Depke
Director of Abbott's GS1 Programme

The Global Standards Management Process balances efficiency with consensus-building for developing relevant standards that address real business challenges.

4-step consensus-driven process



Solve business challenges

- Solve a problem holding your business back
- Develop standards that improve your business's operational efficiency, for example:
 - A UK-based dairy company improved the accuracy and flow of data through the use of Electronic Data Interchange (EDI) standards, reaching a delivery accuracy rate of 99.5%.
 - Delivery verification and receiving time of goods can be reduced by 85%, and the time to take in-store inventory can be reduced by 75% through the use of automated processes based on GS1 standards.
 - Improved order fulfillment and on-shelf availability—made possible by the use of Electronic Product Code (EPC)-enabled Radio Frequency Identification (RFID) tags—can lead to a 15% increase in sales.
 - Warehouse operators cut lead time by 21%, and distribution centres enjoyed a 42% reduction in costs by using GS1 standards, according to a recent global scorecard.
- Streamline operations between trading partners
- Offer more capabilities and value to your customers

Why join a GSMP working group

Be heard

From the largest to the smallest member, GS1 facilitates the group with the belief that the best input includes ALL members of the group. Your participation allows you to play an influential role in shaping business processes that will be adopted by your industry peers.

Select your level of involvement

Is the developing standard critical to your business? Co-lead a working group. Is a standard less critical to you but you wish to provide input? Focus on reviewing its development guidelines. You can customise your participation in the GSMP depending on your time, priorities and resources. And new “distributed working groups” will allow GS1's 100+ member organisations to run local GSMP groups to overcome language and time constraints.

Learn from industry peers

Your problems are likely their problems too. Working together through the GSMP, create standards and solutions that remove barriers with those you do business with, their trading partners and solution providers.

To learn more about GSMP working group efforts now underway—and how you can participate:

Visit www.gs1.org/gsmg or
Email gsmg@gs1.org

A group that doesn't include you may also not produce a solution that works best for you. So get involved.

GS1 AISBL

Blue Tower, Avenue Louise 326, BE 1050 Brussels, Belgium
T +32 (0)2 788 78 00 | F +32 (0)2 788 78 99 | E contactus@gs1.org
www.gs1.org

GS1 is a registered trademark of GS1 AISBL.
All contents copyright © GS1 AISBL 2015.
Printed on recycled paper.