



GROUPEHOSPITALIER
de l'Est Francilien



Implementation of GS1 Standards in Healthcare

G. Nicolaos

Head of Pharmacy unit
Head of Medical Community
Coulommiers Hospital



Co-Head of Pharmacy unit
East Francilian Hospital Group
(EFHG)



Summary

- How it began
- First GS1 project
- GS1 involvement since 2009 and implementations of GS1 standards in Coulommiers Hospital and in East Francilian Hospital Group
- GS1 Standards in the future in the East Francilian Hospital Group

How it began

- How it began : two important challenges
 - Sterilization unit : Ballanger Hospital
 - Find a solution for :
 - The traceability of surgery instruments during the sterilization process
 - The traceability of surgical implants
- How it began: two important persons
 - F Fremont – Ballanger Hospital
 - V Marchand – GS1 France

First GS1 Project

TRACEABILITY OF SURGICAL INSTRUMENTS THANKS LASER DATA MATRIX AND MEDICAL DEVICE TRACEABILITY

M. Tournoud, Y. Hassani, J. Mignon, F. Fremont, G. Nicolaos

Robert Ballanger Hospital

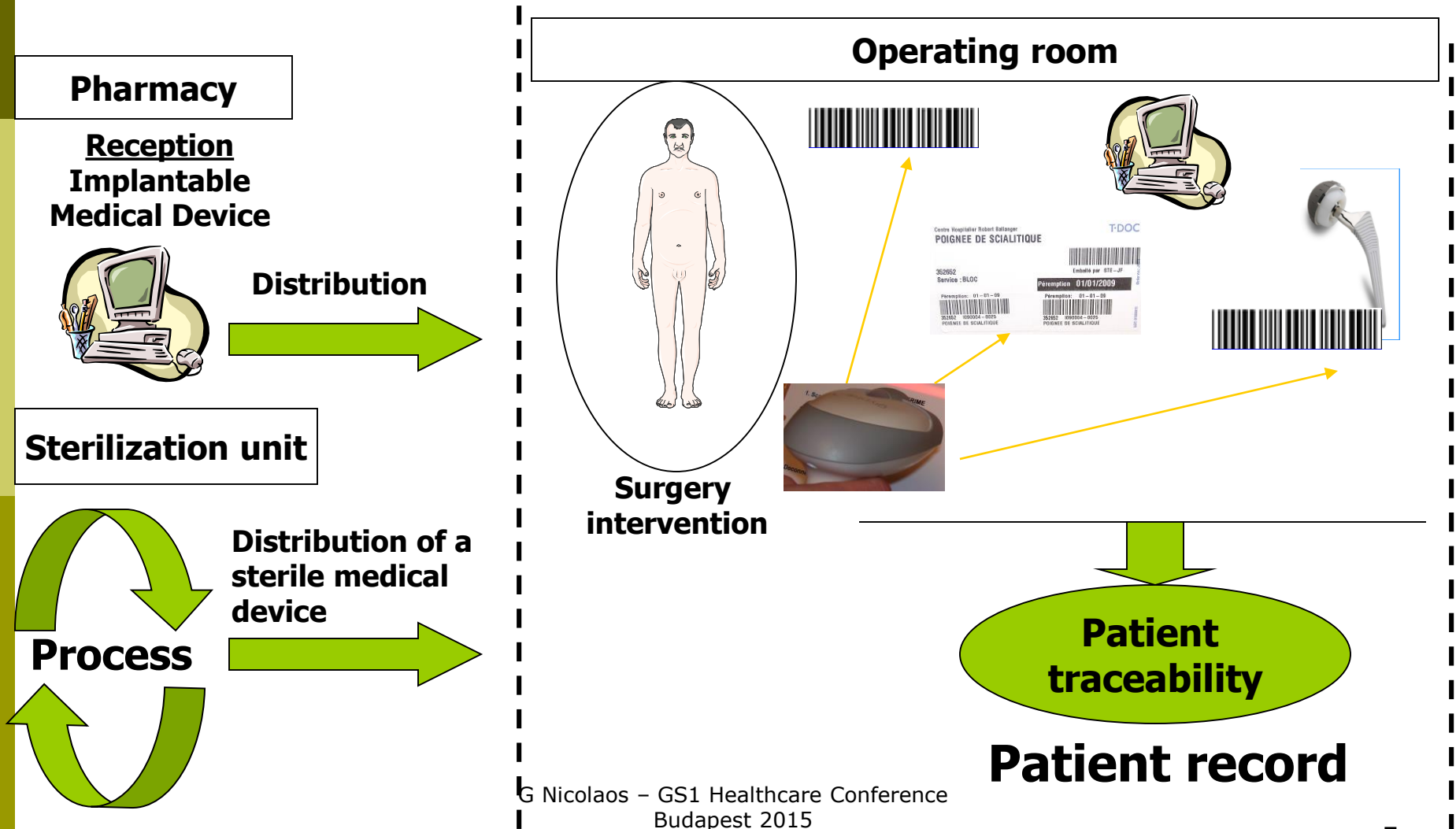
Project presented in Eucomed 2008

Work presented in :

GS1 Healthcare Conference Vienna 2009 and

GS1 Healthcare Conference Washington 2009

Traceability in the operating room



Laser Data Matrix 2D barcode

New instrument



articles n° de série

Fichier Éditer Naviguer Visualiser Action Aide

*N° de série PO214004-0001

Article PO214004 BOUGIE HEGAR SIMPLE N°6

Produit en série L490001-0003 Code barre 01036612190692322100298496

Info Propriétaire Fournisseur User fields Remarque

Emplacement Cond. ART-Série

Statut

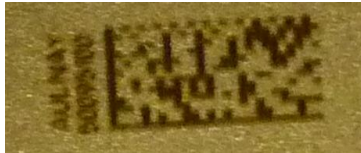
- ☒ Normal
- ☐ À supprimer
- ☐ Supprimé

Emplacement

Créé 10/02/2009 16:58:03, changé 10/02/2009 16:58:03 par JM

Laser Data Matrix 2D barcode

Used instrument



articles n° de série

Fichier Editer Naviguer Visualiser Action Aide

«N° de série TPD161000-0009

Article TPD161000 ECARTEUR FARABEU PM

Produit en série ETPD1610-0001 Code barres 01036616970000002150095700

Info Propriétaire Fournisseur User fields Remarque

Emplacement Cond. ART-Série

Emplacement

Statut

- ☒ Normal
- ☐ A supprimer
- ☐ Supprimé

Créé 13/03/2009 08:24:19, changé 13/03/2009 08:38:10 par STE-NG

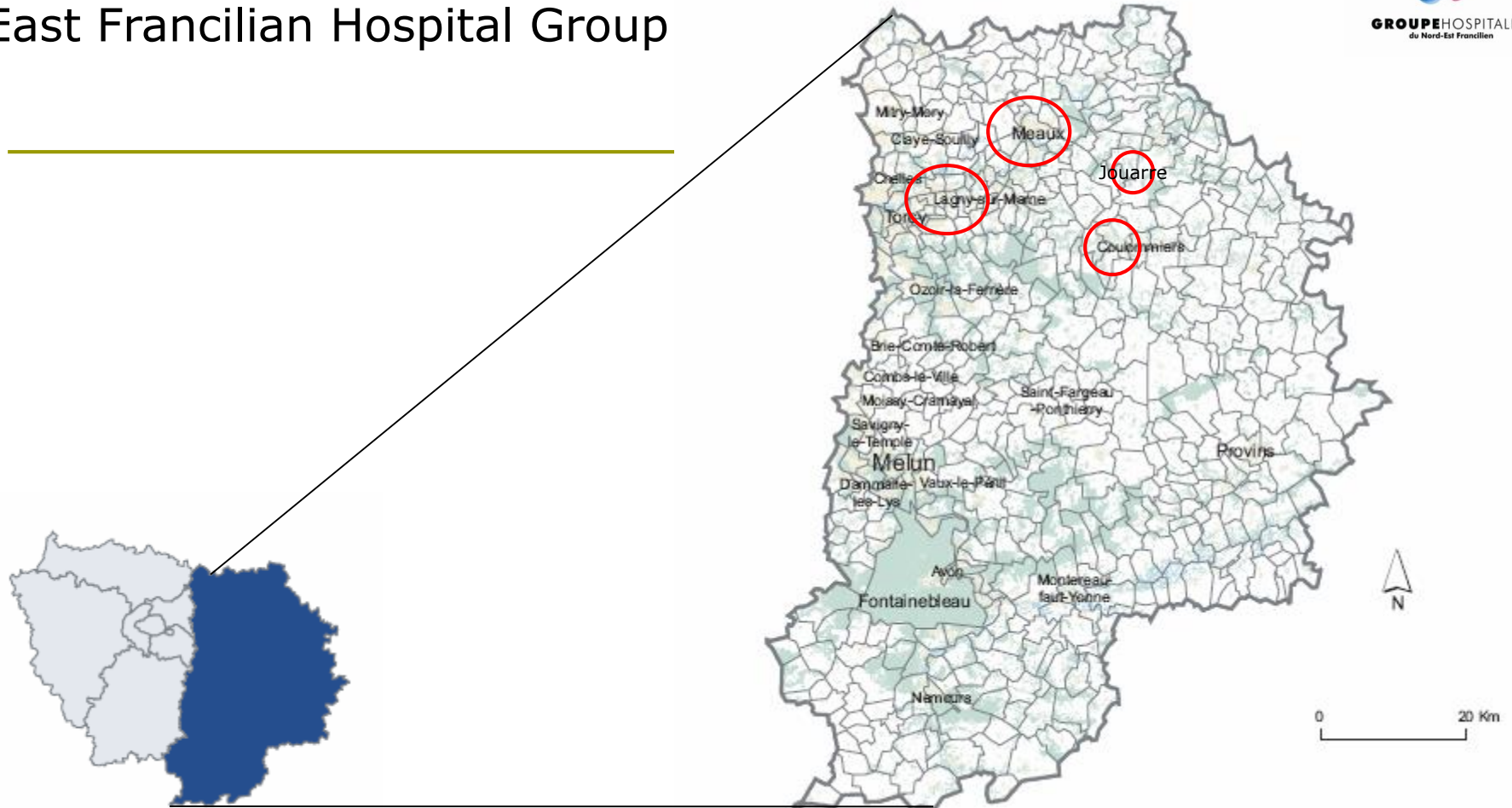
GS1 involvement since 2009 and implementations of GS1 standards in Coulommiers Hospital and in East Francilian Hospital Group

Several areas of involvement with GS1

- Work with GS1:
 - Co Chair of HPAC (Healthcare Provider Advisory Council)
 - Co Chair of the PCM Group (GS1 France)
 - Member of the CoLogh group (GS1 France)
 - Member of the gestion comity (GS1 France/Gendi)

- Several publications and oral interventions
 - GS1 healthcare reference book 2009/2010
 - Techniques hospitalières 2011
 - ISQUA: 27th International Conference – Paris Oct 2010
 - SNPHPU Congress 2013 (poster)
 - Value Chain Pharma – Paris 2015
 -

East Francilian Hospital Group



Principales communes de plus de 10.000 habitants

Paris and the surrounding area

420 Hospitals
12 000 Km²
12 10⁶ Habitants

Seine et Marne

28 Hospitals
5 900 Km²
1,2 10⁶ Habitants

East Francilian Hospital Group



Beds : 935
MSM : 532



Centre hospitalier de Marne-la-Vallée

Beds: 757
MSM: 410



**CENTRE HOSPITALIER
DE COULOMMIERS**

Beds: 475
MSM: 263



Beds : 315
MSM : 0



M Guizard

Head of Pharmacy unit
East Francilian Hospital
Group(EFHG)



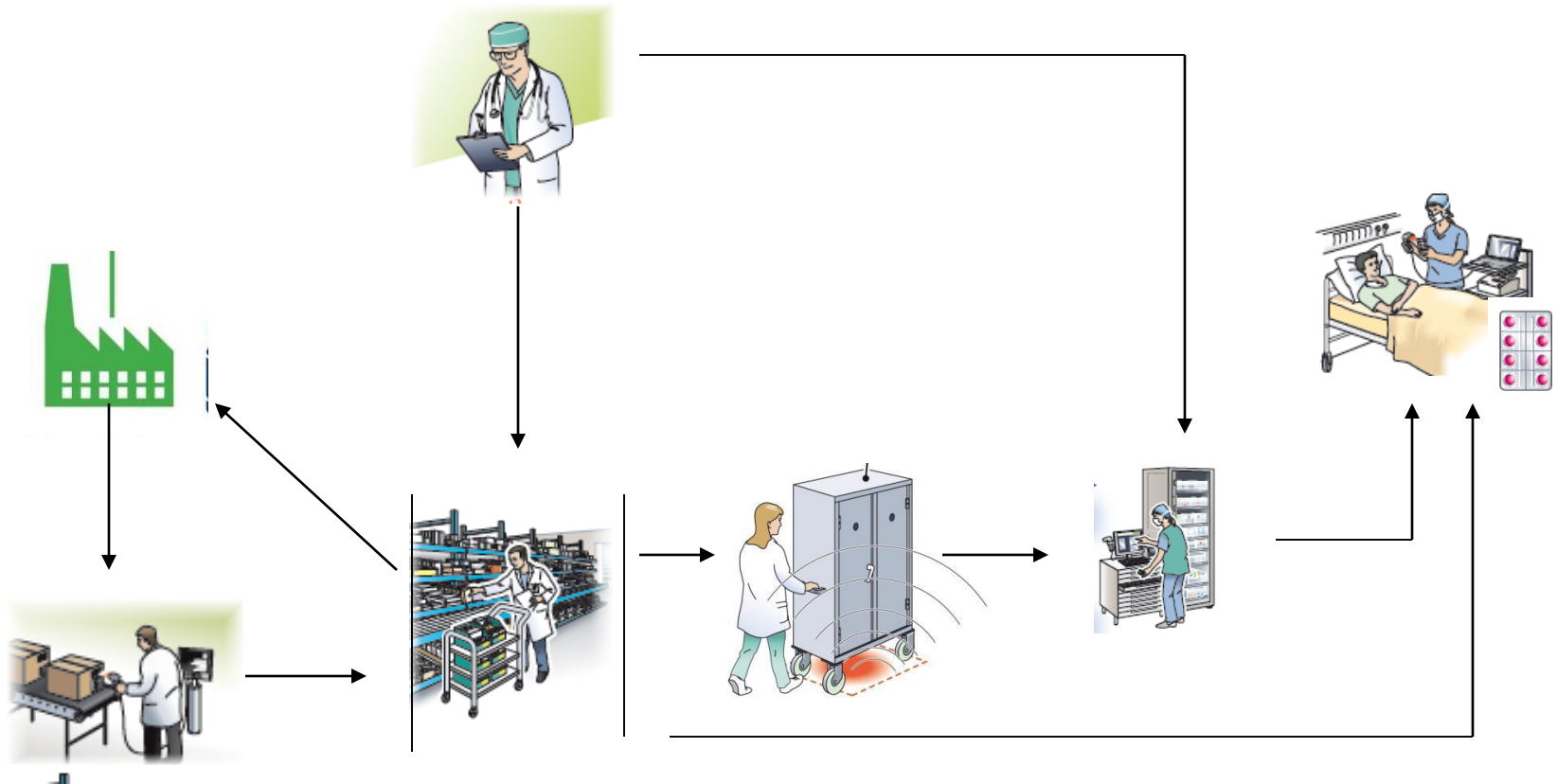
Beds : 2583
MSM : 1205

**1^{er} Hospital Groupment after AP-HP
In Paris and the surrounding area**

MSM: Medicine, Surgery, Maternity

The Pharmaceutical Process

Coulommiers Hospital (T Liautaud – Pharmacist)



In 2009, it was a very simple process
How can we promote patient safety with 1 ou 2D barcodes?

Method



Secondary Level



Primary Level

Is there a bar code?

- 1D ?
- 2D ?

Is the Bar code readable?

What are the data contained
in the 1 ou 2D barcode?

Barcode composition

	Secondary level n=572	Primary Level n=572
Bar code presence	100% (572)	20,8% (119)
Readability of bar code	100% (572)	56,3% (67)
Bar code format N=572		
GS1 Datamatrix	96,3% (551)	
Linear bar code	3,7% (21)	
Composition of the GS1 code (n=551)		
GTIN/Batch/ED (01/10/17)	97,3% (536)	
GTIN/Batch/ED/Fab (01/10/17/11)	2,0% (11)	
GTIN/Batch/ED/SN (01/10/17/21)	0,35% (2)	
GTIN/Batch/ED/Fab/SN (01/10/17/11/21)	0,35% (2)	

First application

- First use of GS 1 barcodes : Reception and distribution of stable blood derivatives



Reception



Distribution



Produit	1 384 OCTAPLEX, pdr et solv pr sol inj, flac & flac + set	Product	Produit 1/1
Fournisseur	OCTAPHARMA SAS		Magasin : 3410
Référence fournisseur	03400956610600	Référence produit	5661060

[illegible]

Expiry date

N° Lot	Numéro de série	1ere Réception	Péréemption	Statut du lot	Nb U.I.
B238A2611		19/12/2012	31/08/2014	Ok	0
B241C2611		28/01/2013	30/09/2014	Ok	0

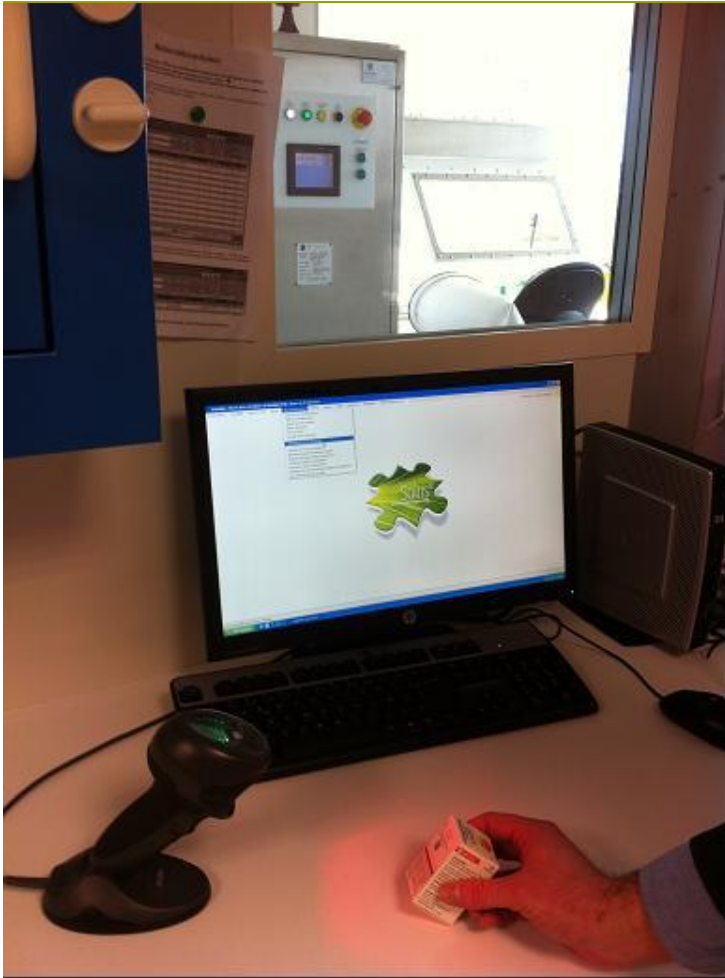
Localisation des lots :
☒ Lots en pharmacie
☐ Lots dispensés (dotation et patient)

Quantité livrée	1	Total des lots	1
-----------------	---	----------------	---



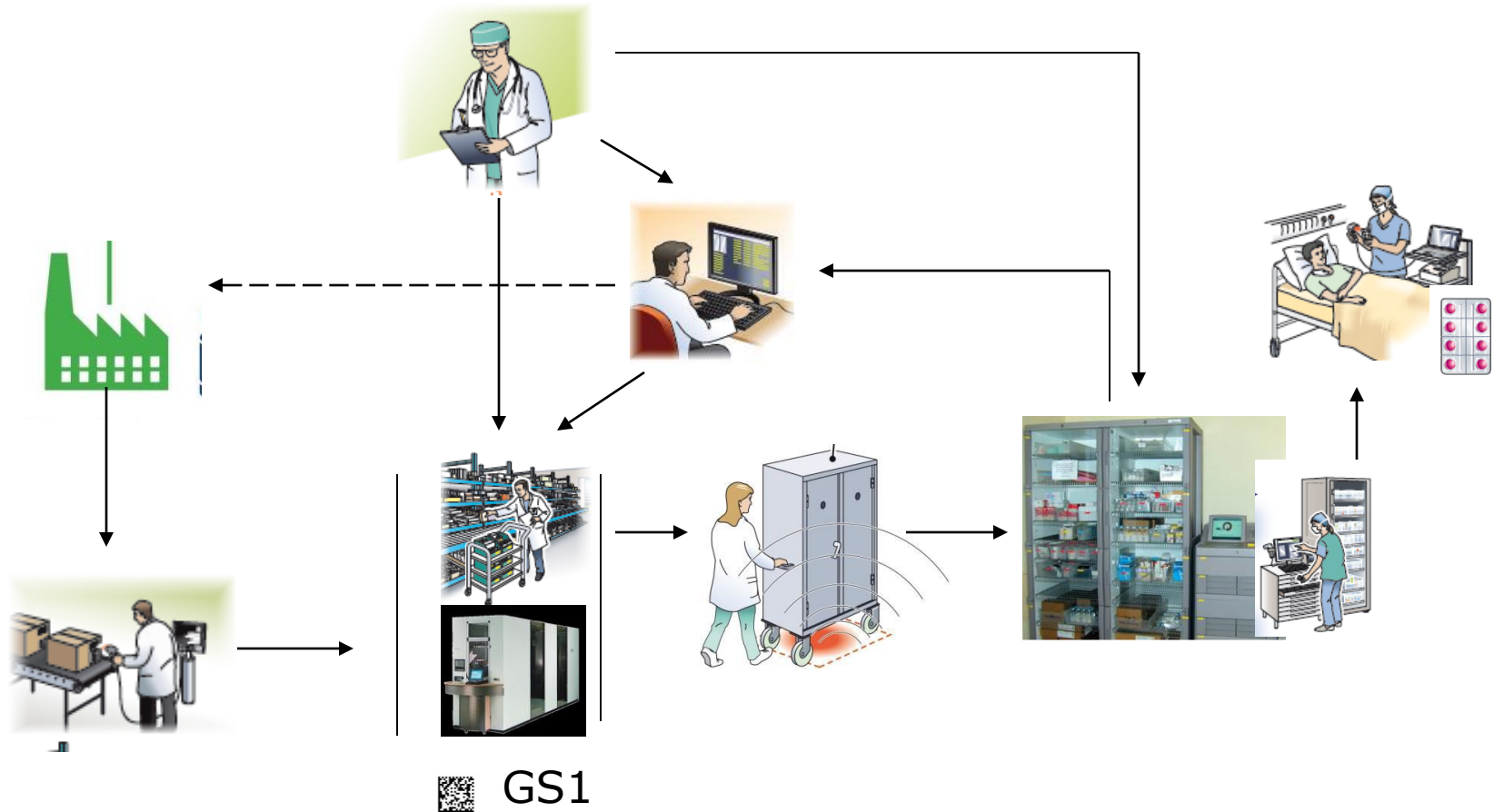
Second application : Intravenous chemotherapy preparation

- ▣ Reception of cytotoxic drugs thanks to the 2D Barcode



The Pharmaceutical Process

Marne la Vallée Hospital



The Pharmaceutical Process Meaux Hospital



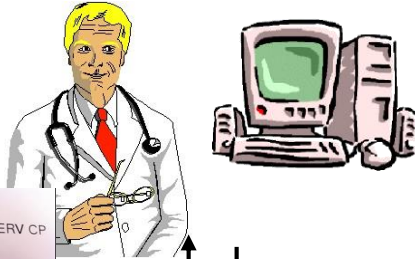
Pharma®



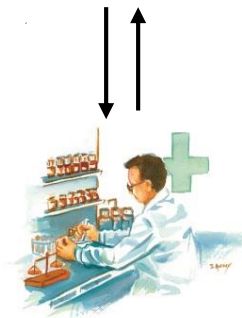
Drug prescription

Pharmaceutical validation of
drug prescription

Pharma®



Return



Pillpick
Manager®

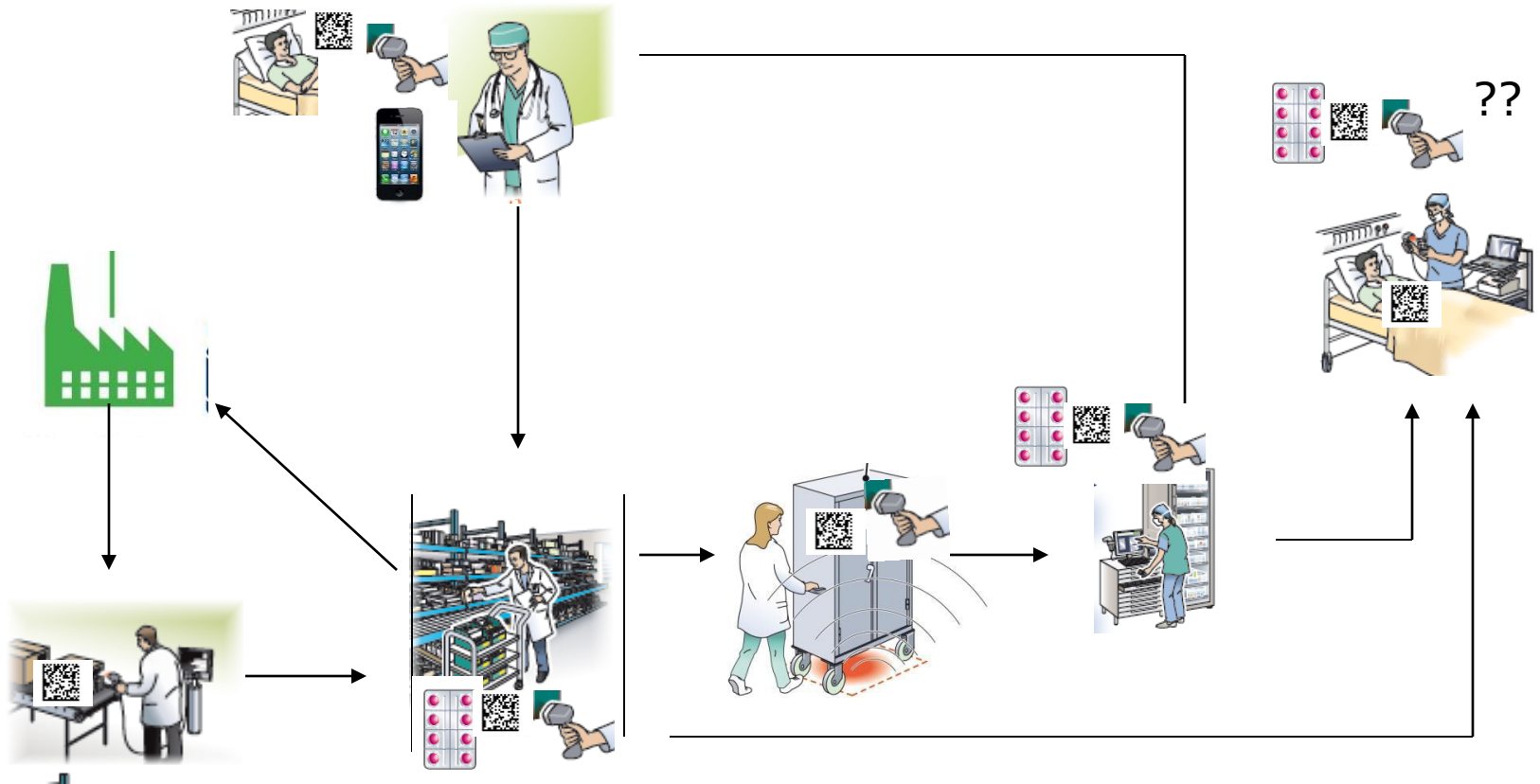
Distribution –
return

Automatic distribution



GS 1 Standards in the future in the East Francilian Hospital Group

And the future?



The pharmacy of the EFHG in 2017

- ❑ 1 principle pharmacy and four sites : GLN
- ❑ 3 sites with surgery : UDI , traceability of surgical instruments
- ❑ Reception of drugs with the GS1 datamatrix

Conclusion

- ❑ More than ten years to promote traceability and patient safety with GS1 standards
- ❑ Implementation of several applications with GS1 standards: traceability of surgical instruments and implants, reception and distribution of drugs
- ❑ Implication in several GS1 groups
- ❑ **One goal : promote patient safety and traceability of drugs and medical devices**

Thanks to

- ❑ F Fremont, J Mignon, B Besnard, P Laffly, JM Toulouse Ballanger Hospital
- ❑ V Marchand, P Georget, F Despres, GS1 France
- ❑ U Kreysa, T Snioch, GS1 Global Office
- ❑ JC Phelep, CEO of the EFHG
- ❑ P Borg, T Simon, Y Benanteur, Coulommiers Hospital
- ❑ T Liautaud, L Pellamourgues, M Tiah, B Loison, M Guizard
- ❑ All members of GS1, Ballanger Hospital and EFHG