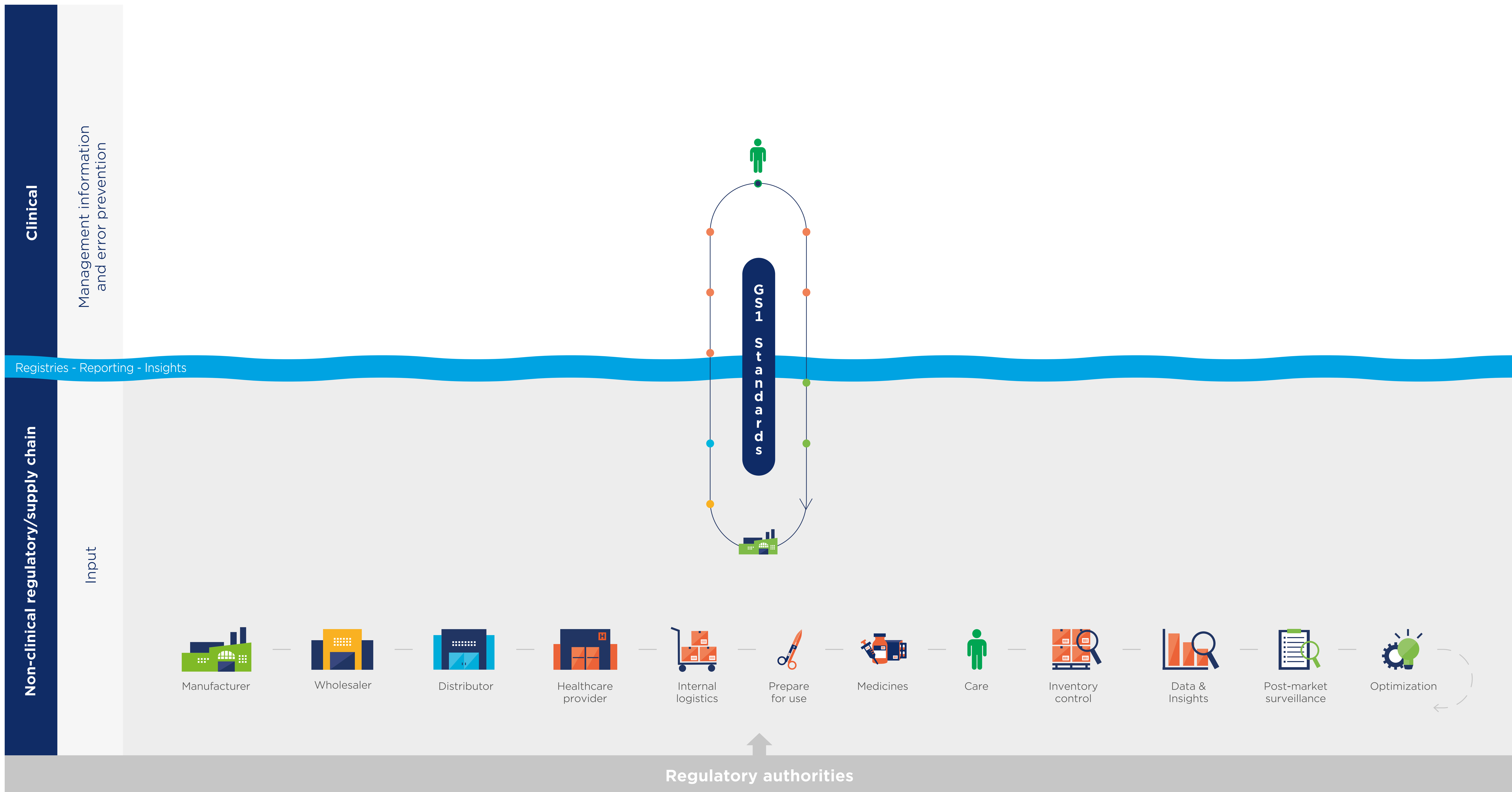
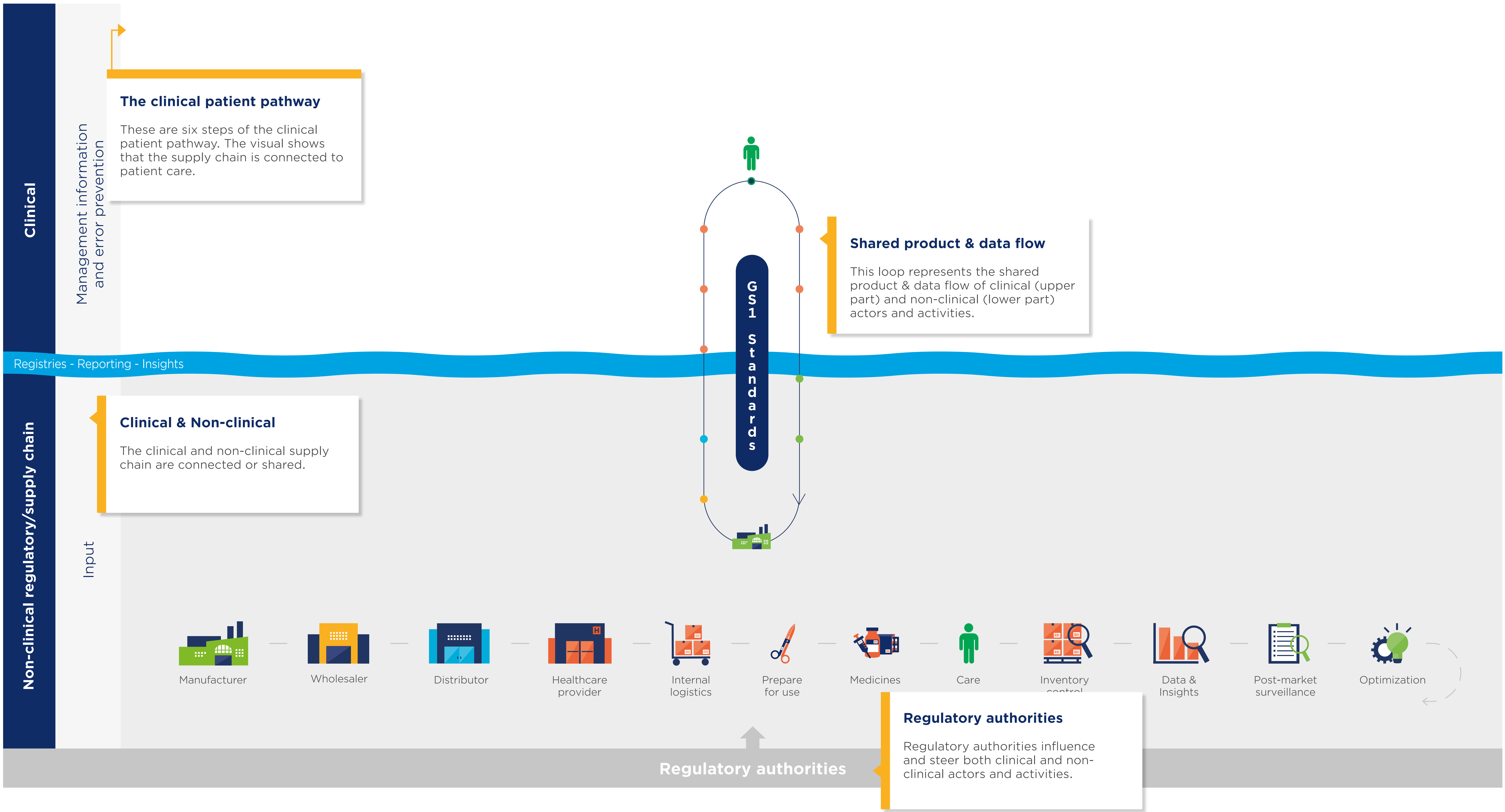


A clinical patient pathway demonstrating the individual touch points throughout the clinical patient journey where GS1 standards are used. Standards adoption provides end-to-end traceability, improving patient safety and operational efficiency.





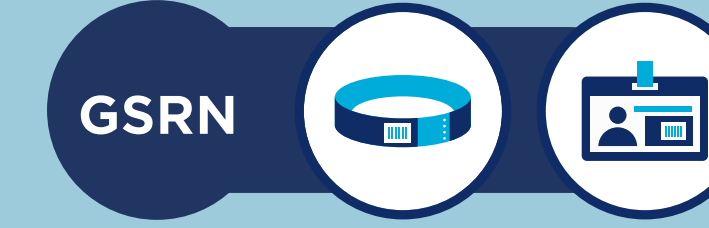
A clinical patient pathway demonstrating the individual touch points throughout the clinical patient journey where GS1 standards are used. Standards adoption provides end-to-end traceability, improving patient safety and operational efficiency.



Clinical Patient Pathway

A clinical patient pathway demonstrating the individual touch points throughout the clinical patient journey where GS1 standards are used. Standards adoption provides end-to-end traceability, improving patient safety and operational efficiency.

Standards key



Global Service Relation Number
to identify a service provider and patient



Global Location Number
to uniquely identify a location

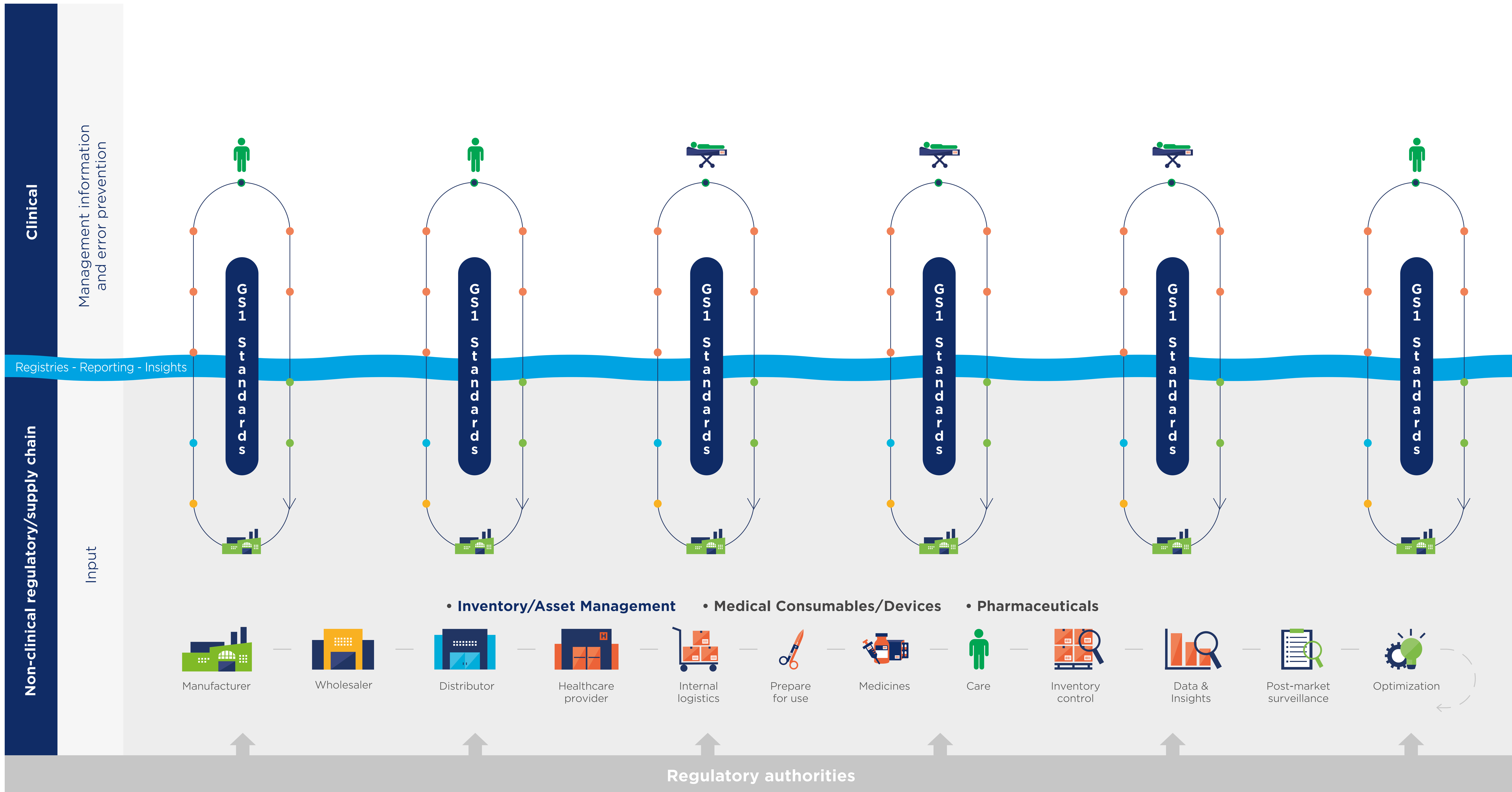


Global Trade Number
to uniquely identify a product



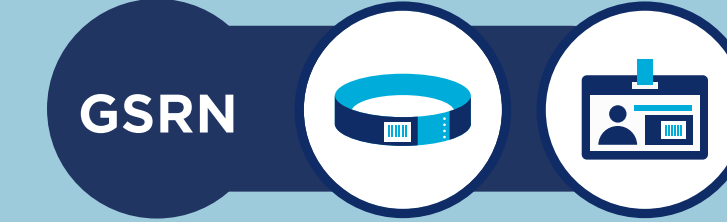
Global Individual Asset Identifier
to uniquely identify and manage an asset

GS1 Standards are device and system agnostic



A clinical patient pathway demonstrating the individual touch points throughout the clinical patient journey where GS1 standards are used. Standards adoption provides end-to-end traceability, improving patient safety and operational efficiency.

Standards key



to identify a service provider and patient



to uniquely identify a location



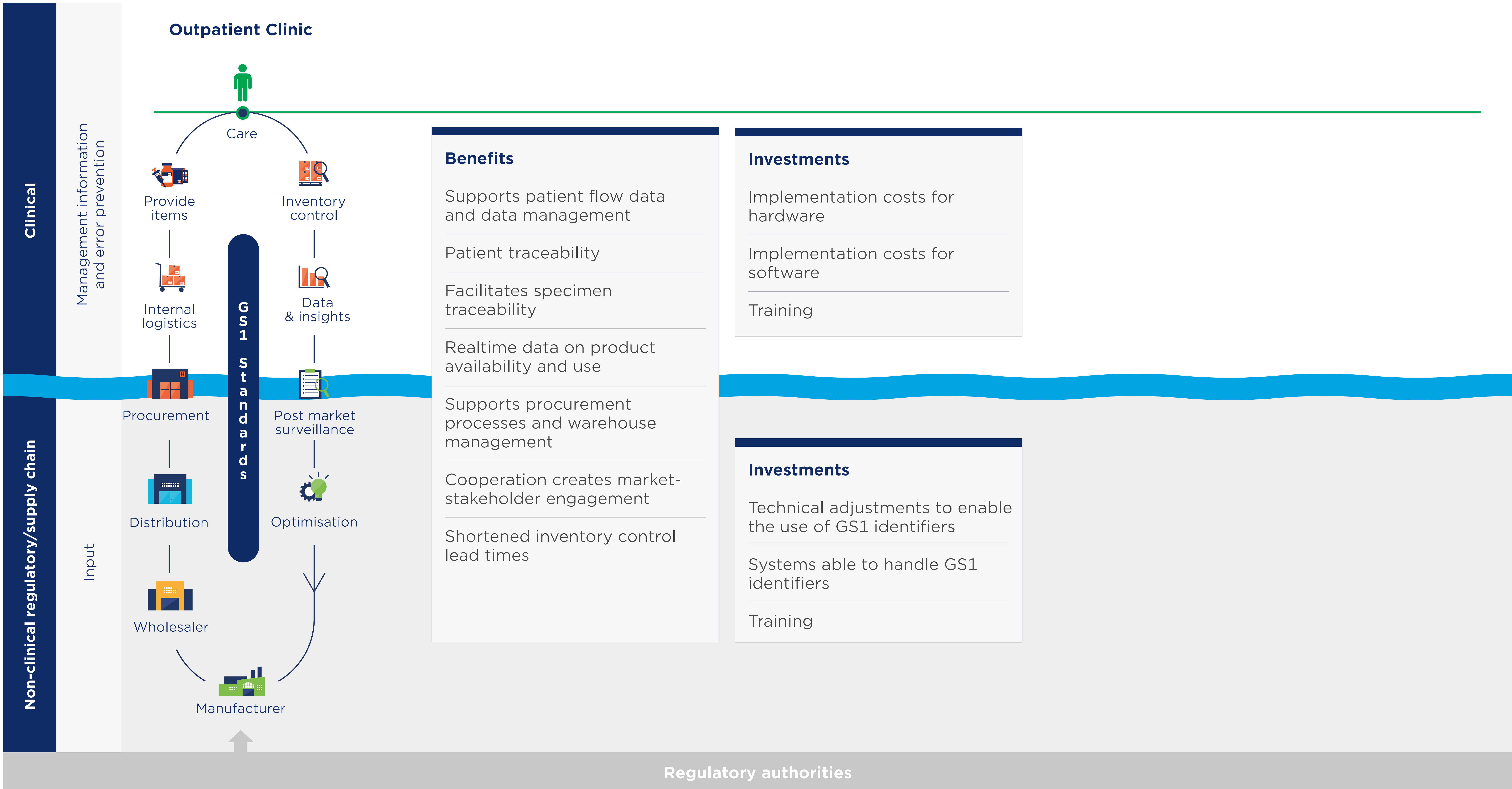
to uniquely identify a product



to uniquely identify and manage an asset

GS1 Standards are device and system agnostic

Outpatient Clinic

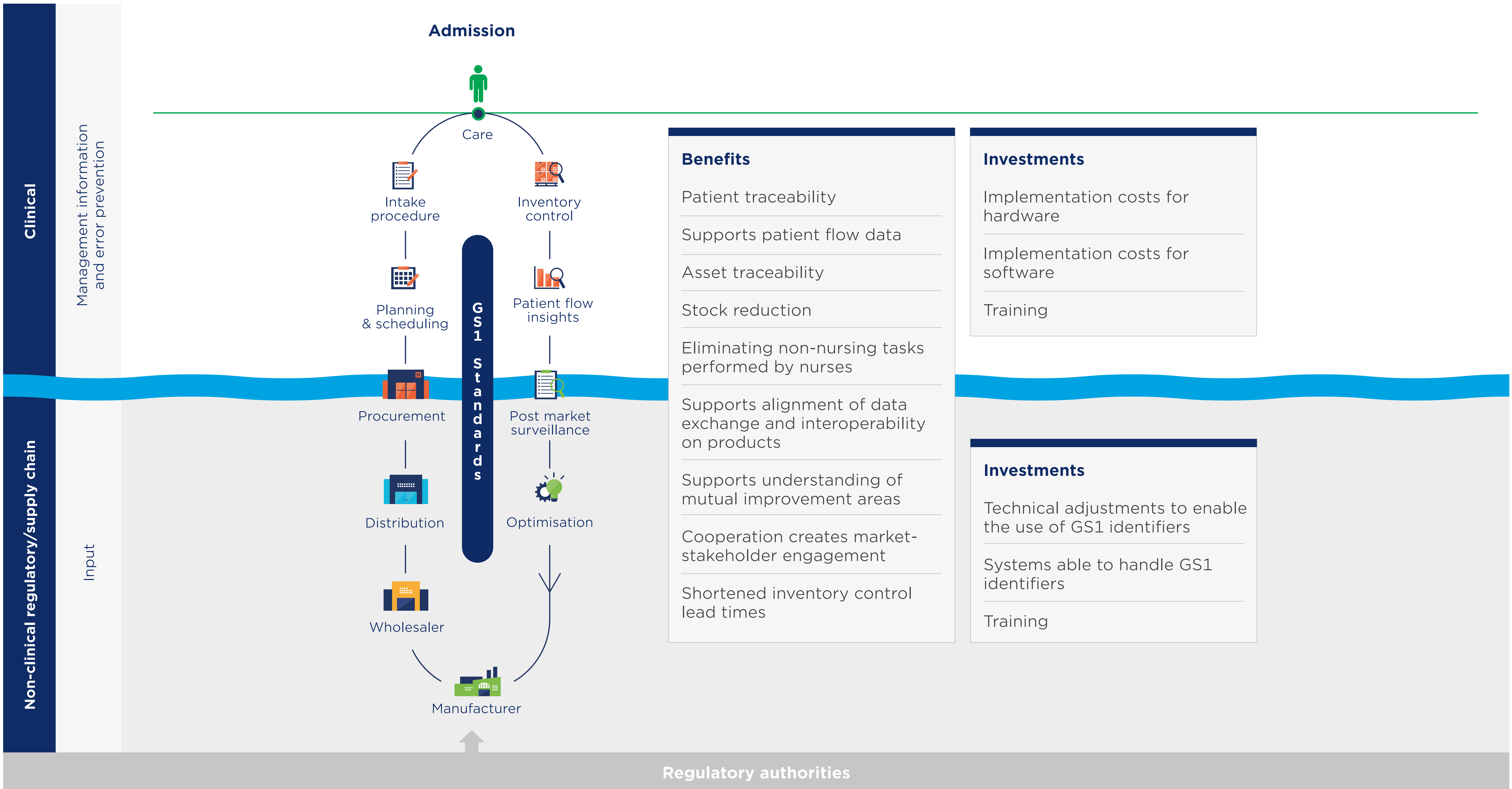


A clinical patient pathway demonstrating the individual touch points throughout the clinical patient journey where GS1 standards are used. Standards adoption provides end-to-end traceability, improving patient safety and operational efficiency.

Standards key

 GSRN to identify a service provider and patient	 GLN to uniquely identify a location	 GTIN to uniquely identify a product	 GIAI to uniquely identify and manage an asset
--	--	--	--

GS1 Standards are device and system agnostic



Benefits

- Patient traceability
- Supports patient flow data
- Asset traceability
- Stock reduction
- Eliminating non-nursing tasks performed by nurses
- Supports alignment of data exchange and interoperability on products
- Supports understanding of mutual improvement areas
- Cooperation creates market-stakeholder engagement
- Shortened inventory control lead times

Investments

- Implementation costs for hardware
- Implementation costs for software
- Training
- Technical adjustments to enable the use of GS1 identifiers
- Systems able to handle GS1 identifiers
- Training

A clinical patient pathway demonstrating the individual touch points throughout the clinical patient journey where GS1 standards are used. Standards adoption provides end-to-end traceability, improving patient safety and operational efficiency.

Standards key



to identify a service provider and patient



to uniquely identify a location

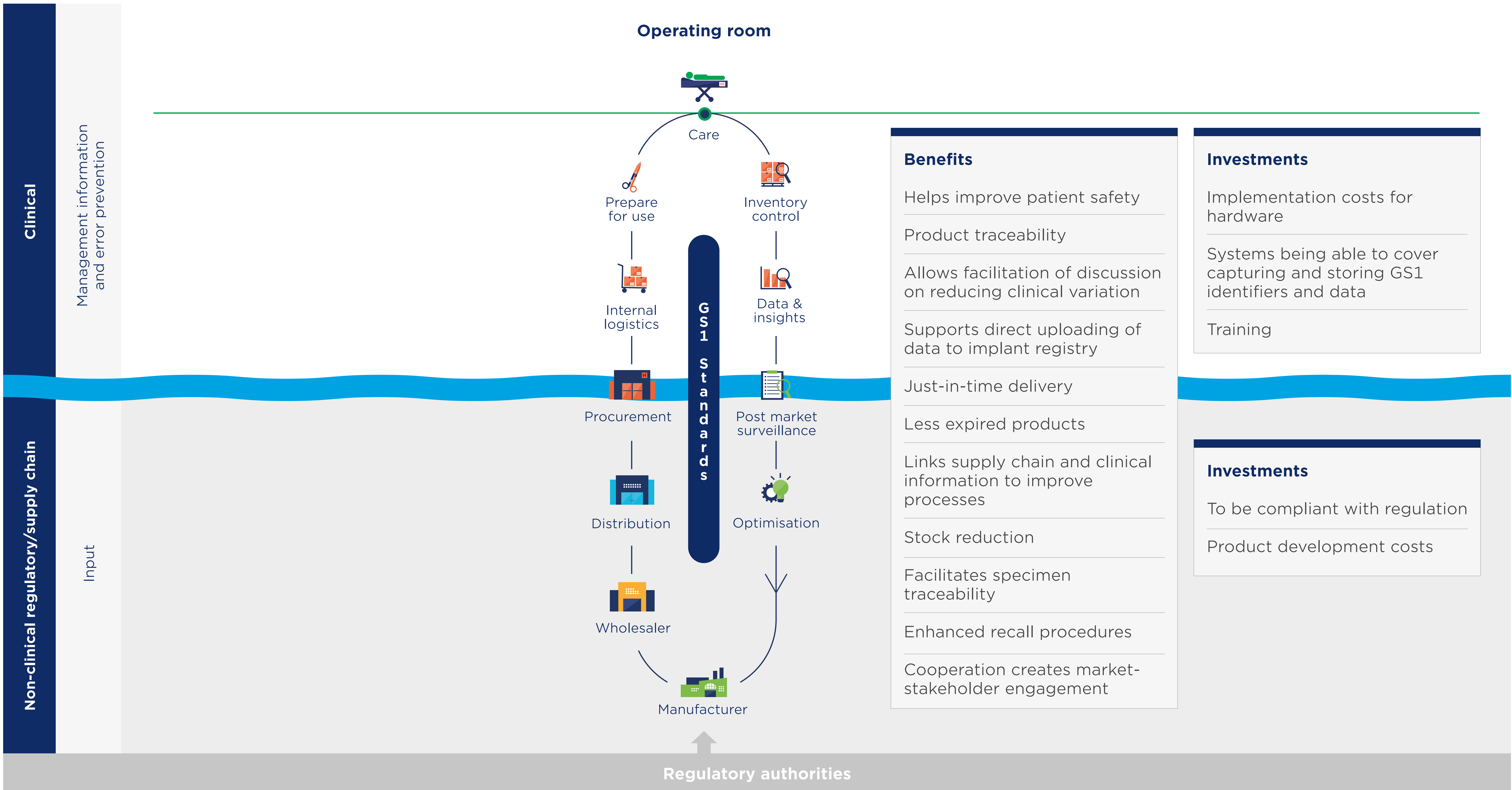


to uniquely identify a product



to uniquely identify and manage an asset

GS1 Standards are device and system agnostic

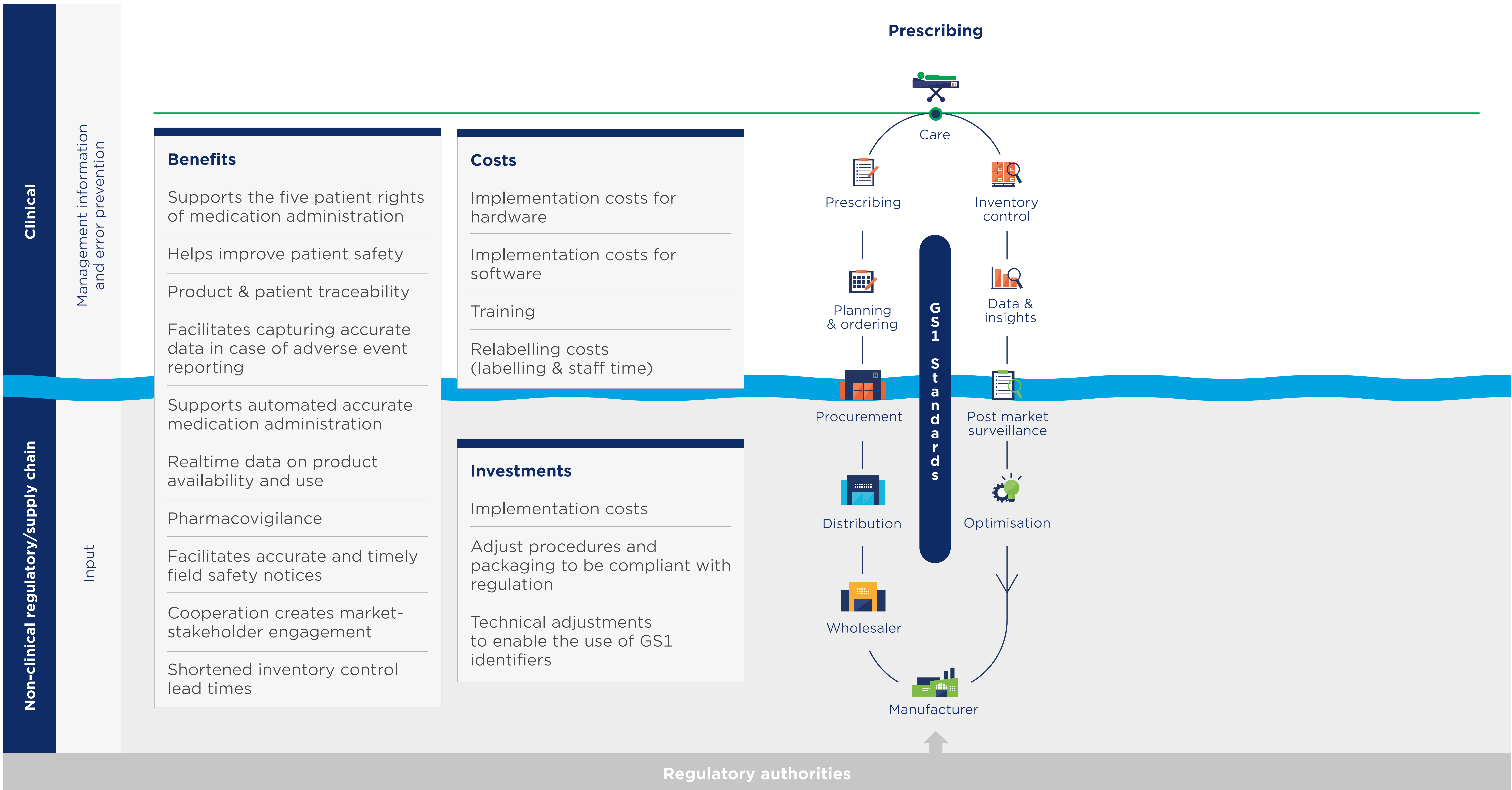


A clinical patient pathway demonstrating the individual touch points throughout the clinical patient journey where GS1 standards are used. Standards adoption provides end-to-end traceability, improving patient safety and operational efficiency.

Standards key

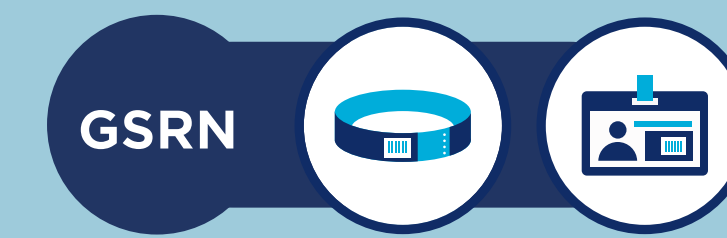


GS1 Standards are device and system agnostic



A clinical patient pathway demonstrating the individual touch points throughout the clinical patient journey where GS1 standards are used. Standards adoption provides end-to-end traceability, improving patient safety and operational efficiency.

Standards key



to identify a service provider and patient



to uniquely identify a location

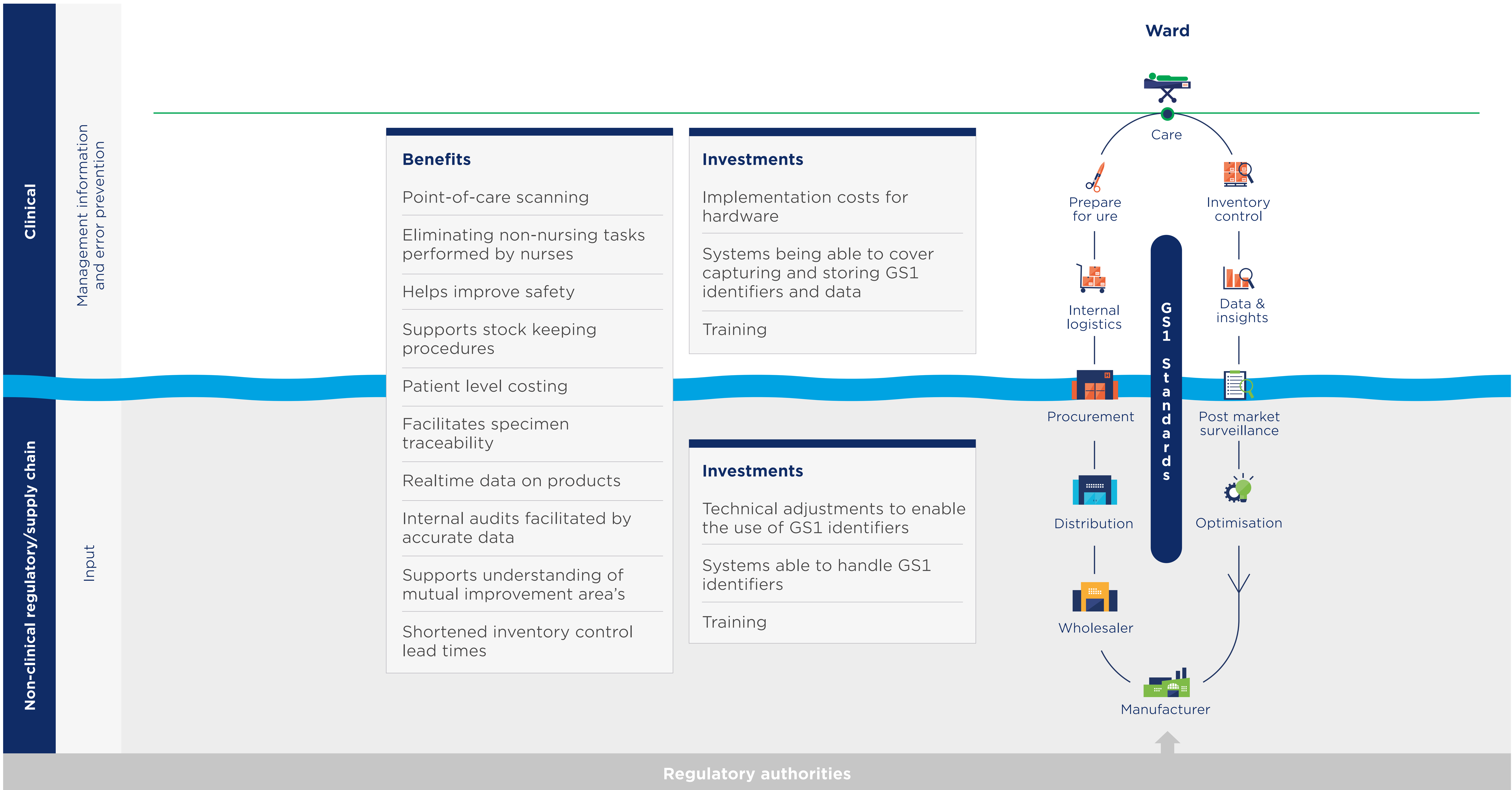


to uniquely identify a product



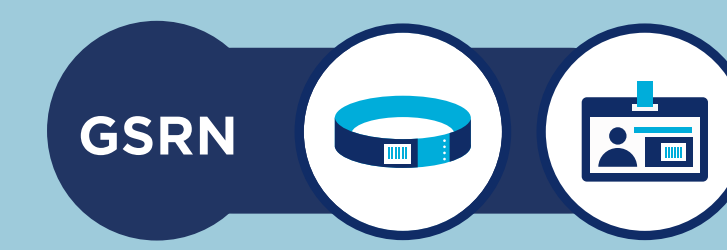
to uniquely identify and manage an asset

GS1 Standards are device and system agnostic



A clinical patient pathway demonstrating the individual touch points throughout the clinical patient journey where GS1 standards are used. Standards adoption provides end-to-end traceability, improving patient safety and operational efficiency.

Standards key



to identify a service provider and patient



to uniquely identify a location



to uniquely identify a product



to uniquely identify and manage an asset

GS1 Standards are device and system agnostic

