



Transport Status Request and Notification Business Message Standard (BMS)

Release 3.1

1-May-2013, Issue 1



Document Summary

Document Item	Current Value
Document Title	Transport Status Request and Notification - Business Message Standard (BMS)
BMS Release	3.1
Document Version	Issue 1, 1-May-2013
Work Group Name	eCom SMG
BMS Template Version	2.3

Change Request Reference

Date of CR Submission to GSMP:	CR Submitter(s):	Refer to Change Request (CR) Number(s):
	GS1 Germany	12-193
	GS1 Germany	12-194
	GS1 Germany	12-195
	GS1 Germany	12-196
	GS1 Germany	12-197

Business Requirements Document (BRAD) Reference

BRAD Title:	BRAD Date:	BRAD Version
Transport Management		1.0

Document Change History

Date of Change	Version	Changed By	Reason for Change	Summary of Change
25-Oct-2011	BMS 3.0 issue 1.1.0	Coen Janssen	BMS Release 3.0 eBallot Approved	Status updated
1-May-2013	BMS 3.1 – issue 1	Coen Janssen	BMS Release 3.1, first draft	See section Summary of Changes

Disclaimer

WHILST EVERY EFFORT HAS BEEN MADE TO ENSURE THAT THE GUIDELINES TO USE THE GS1 STANDARDS CONTAINED IN THE DOCUMENT ARE CORRECT, GS1 AND ANY OTHER PARTY INVOLVED IN THE CREATION OF THE DOCUMENT HEREBY STATE THAT THE DOCUMENT IS PROVIDED WITHOUT WARRANTY, EITHER EXPRESSED OR IMPLIED, REGARDING ANY MATTER, INCLUDING BUT NOT LIMITED TO THE OF ACCURACY, MERCHANTABILITY OR FITNESS FOR A PARTICULAR PURPOSE, AND HEREBY DISCLAIM ANY AND ALL LIABILITY, DIRECT OR INDIRECT, FOR ANY DAMAGES OR LOSS RELATING TO OR RESULTING FROM THE USE OF THE DOCUMENT. THE DOCUMENT MAY BE MODIFIED, SUBJECT TO DEVELOPMENTS IN TECHNOLOGY, CHANGES TO THE STANDARDS, OR NEW LEGAL REQUIREMENTS. SEVERAL PRODUCTS AND COMPANY NAMES MENTIONED HEREIN MAY BE TRADEMARKS AND/OR REGISTERED TRADEMARKS OF THEIR RESPECTIVE COMPANIES. GS1 IS A REGISTERED TRADEMARK OF GS1 AISBL.

Table of Contents

1. Business Domain View	5
1.1. Problem Statement / Business Need	5
1.2. Objective	5
1.3. Audience	5
1.4. References	6
1.5. Acknowledgements	7
1.5.1. Work Group	7
1.5.2. Development Team Members	7
2. Business Context	8
3. Business Transaction View	9
3.1. Business Transaction - Request Transport Status	9
3.2. Report Transport Status	10
4. Business Information View	13
4.1. Transport Status Request (message)	13
4.1.1. Transport Status Request – Consignment	15
4.1.2. Transport Status Request – Shipment	16
4.1.3. Transport Status Request - Logistic Unit	17
4.1.4. Transport Status Request - Transport Equipment	18
4.1.5. Transport Status Request - Transport Means	19
4.2. Transport Status Notification (message)	21
4.2.1. Transport Status Notification – Consignment	24
4.2.2. Transport Status Notification – Shipment	26
4.2.3. Transport Status Notification - Logistic Unit	28
4.2.4. Transport Status Notification - Transport Equipment	30
4.2.5. Transport Status Notification - Transport Means	32
4.2.6. Transport Status Notification - Transport Movement	34
4.3. Enumerations (message specific)	37
4.3.1. TransportStatusInformationEnumeration	37
4.3.2. TransportStatusObjectEnumeration	37
4.4. Codelists	37
5. Business Message Examples	38
5.1. Status Request - Consignment Status and Movement	38
5.2. Status Notification - Consignment Status and Movement	38
5.3. Status Notification – Shipment - Information on Delivery (IoD)	39
6. Implementation Considerations	42
7. Appendices	42
8. Summary of Changes	42

8.1.	BMS Release 3.0	42
8.2.	BMS Release 3.1	42

1. Business Domain View

1.1. Problem Statement / Business Need

This scenario allows for the exchange of information regarding the status of transport execution progress at any point (in time or place) within the full transport chain.

A status message may be sent:

- as the result of a request or requests for information (through the Transport Status Request message) regarding a consignment or consignments;
- on a scheduled basis at predetermined times;
- on the occurrence of a selected event or events;
- on the occurrence of an exceptional event as agreed by the partners involved.

This message can relate to a status (or status's) that has (or have) been reached in a transport chain. Additionally, the message may report an exceptional status and the reason for that exceptional status.

In general the exchange of Transport Status Request and Transport Status Notification messages is optional and to be agreed between the LSC and LSP. However, normally at least one Transport Status message is provided by the LSP to the LSC and/or any other agreed party to inform those parties on the final delivery of the goods.

Current technology of IT devices installed on transport means or transport equipment (usually known as vehicle or assets track devices) allows to measure and communicate a set of parameters, such as:

- Temperature
- Position (GPS latitude and longitude)
- Speed
- Engine on/off
- Door status: open/closed
- Refrigeration system on/off
- Etc.

The Transport Status Notification message supports the inclusion of this kind of information.

1.2. Objective

This standard defines the transaction model and data model for the following business messages:

- Transport Status Request
- Transport Status Notification

1.3. Audience

Not Applicable

1.4. References

Reference Name
BRAD Transport Management (GS1, 2009)
Logistics Interoperability Model (GS1, 2007)
BMS eCom Common Library 3.1 (GS1, 2012)
BMS Shared Common Library 3.1 (GS1, 2012)

1.5. Acknowledgements

The following is a list of individuals (and their companies) who participated in the creation, review and approval of this BMS.

1.5.1. Work Group

Function	Name	Company / organisation
BRG Work Group Chair	Fred Kempkes	Unilever
BRG Work Group Chair	Jaco Voorspuij	DHL
BRG Work Group Member	Mia Lenman	GS1 Sweden
BRG Work Group Member	Richard Chresta	GS1 Switzerland & UNCEFACT TGB3
BRG Work Group Member	Jeff Melcher	Army & Air Force Exchange Service
BRG Work Group Member	Yuliya Shevchenko	GS1 Global Office
BRG Work Group Member	Roman Strand	GS1 Germany
BRG Work Group Member	Henk van Maaren	CETIMA & UNCEFACT TBG3
BRG Work Group Member	Pere Rosell	GS1 Spain
BRG Work Group Member	Mats Rosen	DSV Sweden
BRG Work Group Member	Helena Lunden	ICA Sweden
BRG Work Group Member	Gerald Borgolte	Atos Origin
BRG Work Group Member	Audun Vennesland	SINTEF & eFreight
BRG Work Group Member	Mary Vayou	BMT Group Ltd & eFreight
BRG Work Group Member		
BRG Work Group Member		

1.5.2. Development Team Members

Function	Name	Organisation
GSMP Process Lead	Jean-Luc Champion	GS1 Global Office
Standards Content Lead	Coen Janssen	GS1 Global Office
Technical Development Lead	Ewa Iwicka	GS1 Global Office
Peer Review	Eric Kauz	GS1 Global Office

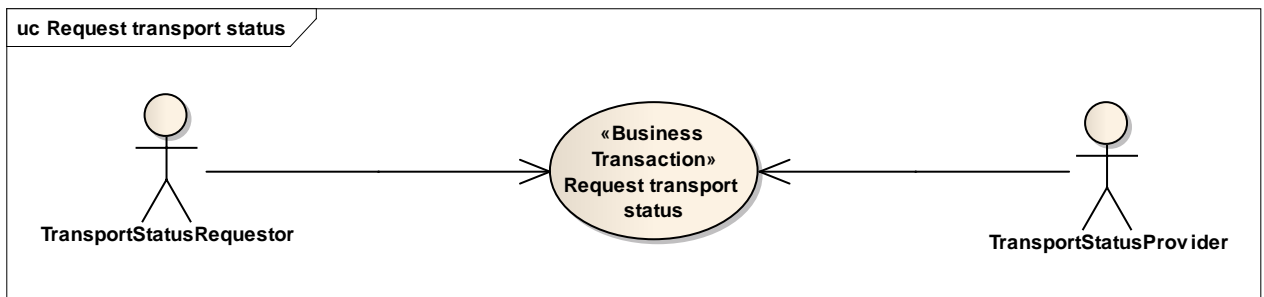
2. Business Context

Context Category	Value(s)
Industry	All
Geopolitical	All
Product	All
Process	Deliver / Transport Management
System Capabilities	GS1 System
Official Constraints	None

3. Business Transaction View

3.1. Business Transaction - Request Transport Status

Use Case Diagram



Use Case Description

Use Case ID	UC-1									
Use Case Name	Request transport status									
Use Case Description	To request information regarding the status of transport execution progress.									
Actors (Goal)	Transport Status Requestor Transport Status Provider									
Performance Goals	Not applicable									
Preconditions	Interoperation agreement is in place.									
Post conditions	Transport status request has been received by the LSS									
Scenario	<p>Begins when the transport status requestor determines a transport status update is needed. Continues with...</p> <table><tr><th>Step #</th><th>Actor</th><th>Activity Step</th></tr><tr><td>1</td><td>Requestor</td><td>Issues a transport status request</td></tr><tr><td>2</td><td>Provider</td><td>Receives the transport status request</td></tr></table> <p>Ends when the LSS has processed the transport status request in the transport management system.</p>	Step #	Actor	Activity Step	1	Requestor	Issues a transport status request	2	Provider	Receives the transport status request
Step #	Actor	Activity Step								
1	Requestor	Issues a transport status request								
2	Provider	Receives the transport status request								
Alternative Scenario	Not applicable									
Related Requirements	Not applicable									

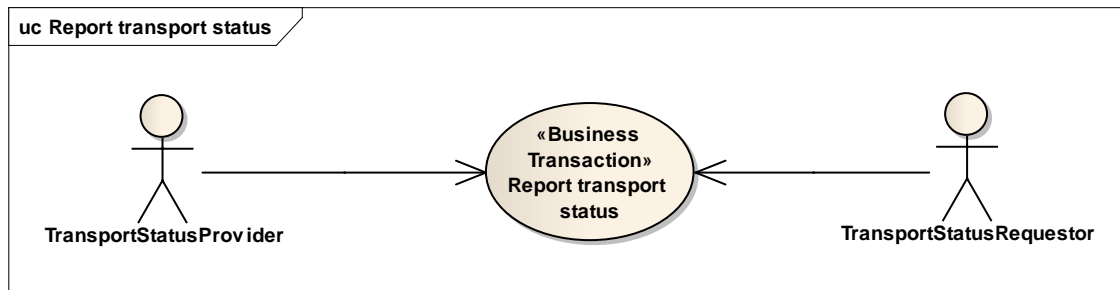
Related Rules	Not applicable
----------------------	----------------

Activity Diagram(s)

Not applicable

3.2. Report Transport Status

Use Case Diagram



Use Case Description

Use Case ID	UC-2
Use Case Name	Report transport status
Use Case Description	<p>Transport Status: The main objective is to report the transport status between the transport status requestor and the transport status provider.</p> <p>Information on Delivery: The main objective is for the logistics services seller to inform the logistics services buyer on the final execution status of deliveries specified in a transport instruction.</p>
Actors (Goal)	<p>Transport Status Requestor</p> <p>Transport Status Provider</p>
Performance Goals	Not applicable
Preconditions	<p>Either:</p> <p>The transport status provider did receive a transport status request;</p> <p>Or</p> <p>A pre-agreed event type or time interval determines when a transport status notification needs to be sent.</p> <p>Furthermore:</p> <p>The requesting party is indeed entitled to the transport status information.</p>
Post conditions	Transport status notification has been received by the transport status requestor.

Scenario	Begins when the transport status provider receives a request.		
	Continues with...		
	Step #	Actor	Activity Step
	1	Provider	Issues a transport status notification
	2	Requestor	Receives the transport status notification
	Ends when the requestor has processed the transport status notification.		
Alternative Scenario	Begins when the transport status provider determines it is time to send a transport status notification.		
	Continues with...		
	Step #	Actor	Activity Step
	1	Provider	Issues a transport status notification
	2	Requestor	Receives the transport status notification
	Ends when the requestor has processed the transport status notification.		
Related Requirements	Not applicable		
Related Rules	Not applicable		

Activity Diagram(s)

Not applicable

Sequence Diagram(s)

Figure: Report Transport Status with prior request

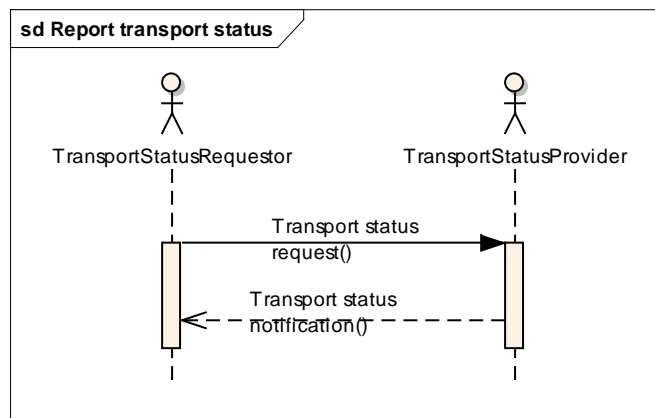
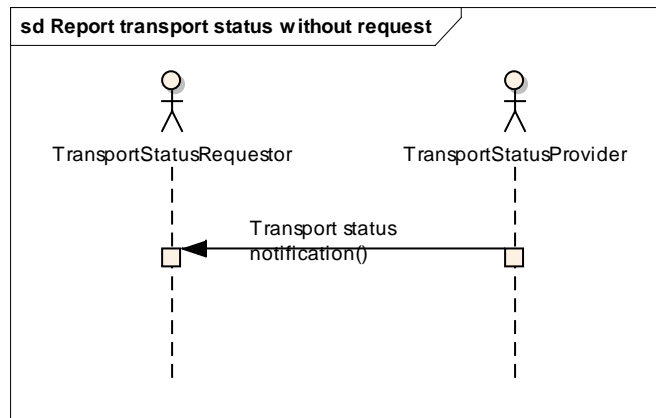
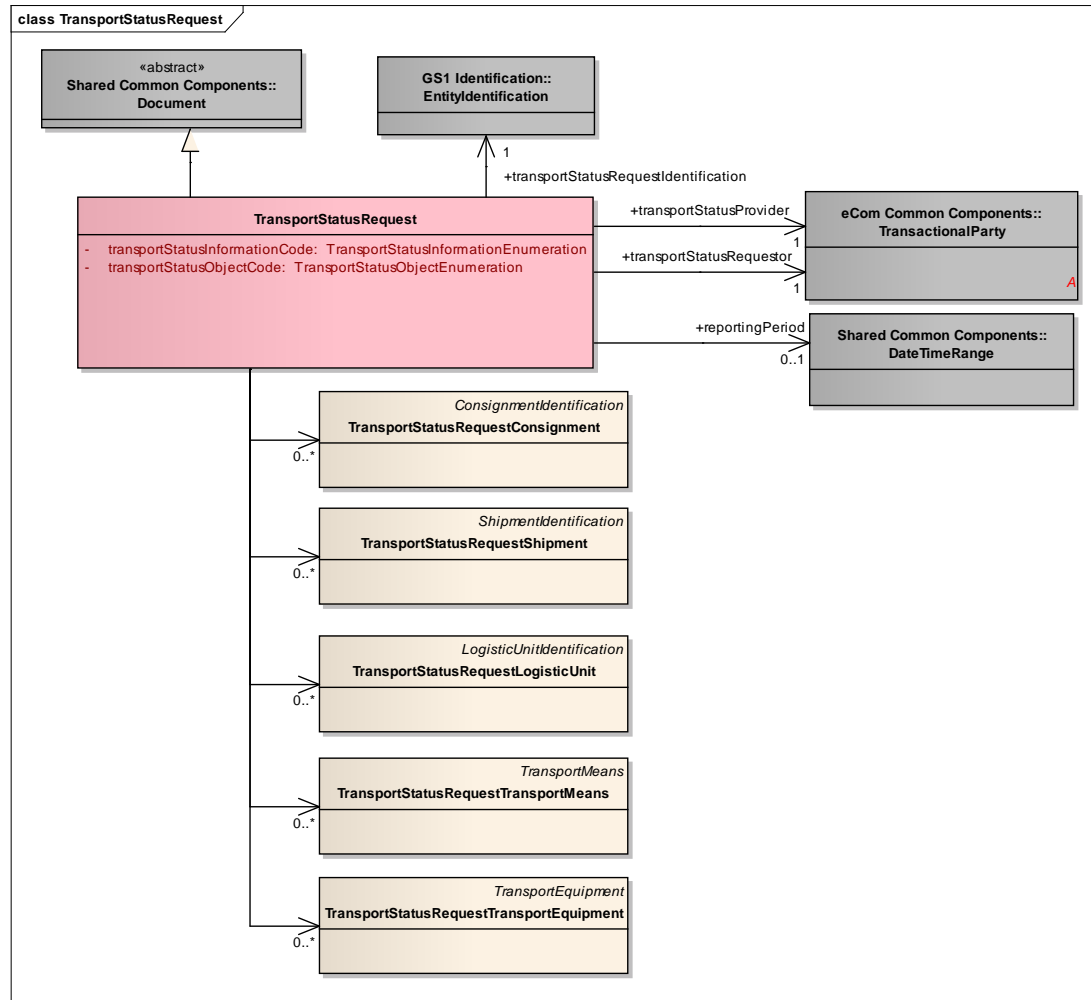


Figure: Report Transport Status without prior request

4. Business Information View

4.1. Transport Status Request (message)

Class Diagram

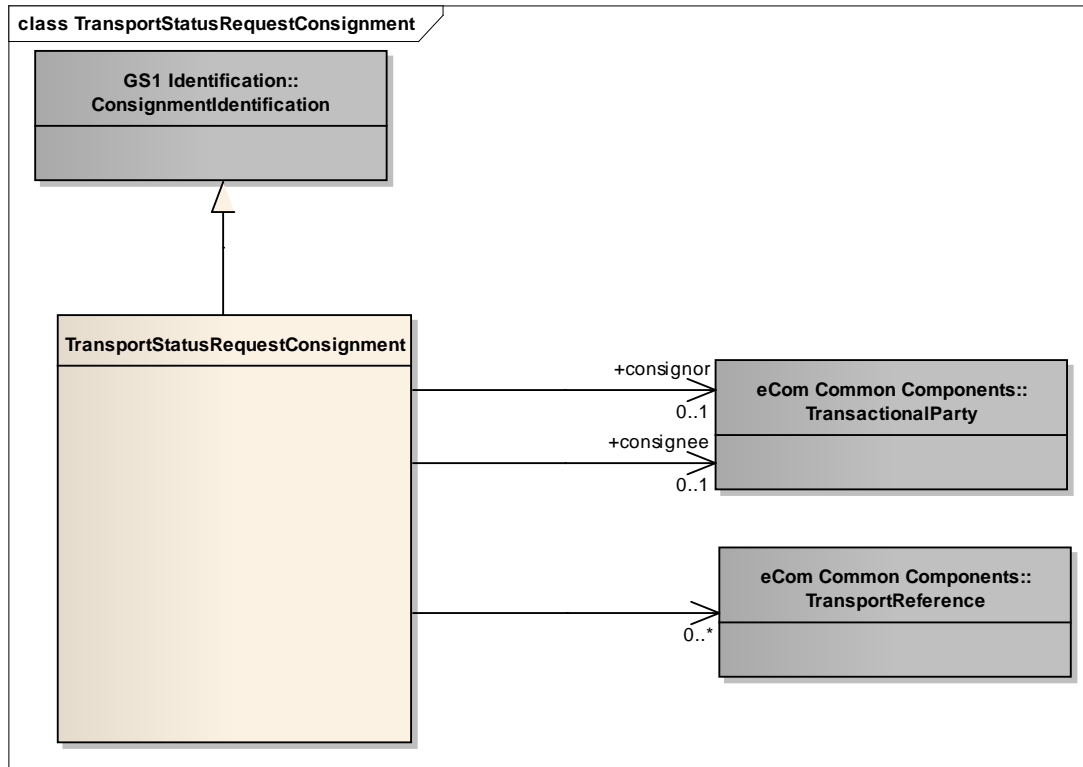


GDD Report

content	attribute / role	datatype /secondary class	multiplic- ity	definition	requirements
TransportStatusRequest				Message requesting information on the transport status and movements of a transport related object.	
Generalization		Document		Provides the generic document details for the transport status request.	
Association	transportStat- usProvider	TransactionalParty	1 ..1	A party that provides transport status information to another party.	
Association	transportStat- usRequestor	TransactionalParty	1 ..1	A party that requests transport status information from another party.	
Association	transportStat- usRequestId entification	EntityIdentification	1 ..1	The identification of the transport status request document.	
Association		TransportStatusRe- questConsignment	0..*	Information identifying the consignment for which transport status information is being requested.	
Association		TransportStatusRe- questShipment	0..*	Information identifying the shipment for which transport status information is being requested.	
Association		TransportStatusRe- questLogisticUnit	0..*	Information identifying the logistic unit for which transport status information is being requested.	
Association		TransportStatusRe- questTransportMe- ans	0..*	Information identifying the transport means for which transport status information is being requested.	
Association		TransportStatusRe- questTransportEq- uipment	0..*	Information identifying the piece of transport equipment for which transport status information is being requested.	
Association	reportingPeri- od	DateTimeRange	0..1	The date time range for which transport status information is being requested.	
Attribute	transportStat- usInformatio- nCode	TransportStatusInf- ormationEnumerat- ion	1..1	Code specifying the type of transport status information that is being requested. Example: STATUS_ONLY.	
Attribute	transportStat- usObjectCod- e	TransportStatusO- bjectEnumeration	1..1	Code specifying the type of object for which transport status information is being requested. Example: CONSIGNMENT.	

4.1.1. Transport Status Request – Consignment

Class Diagram



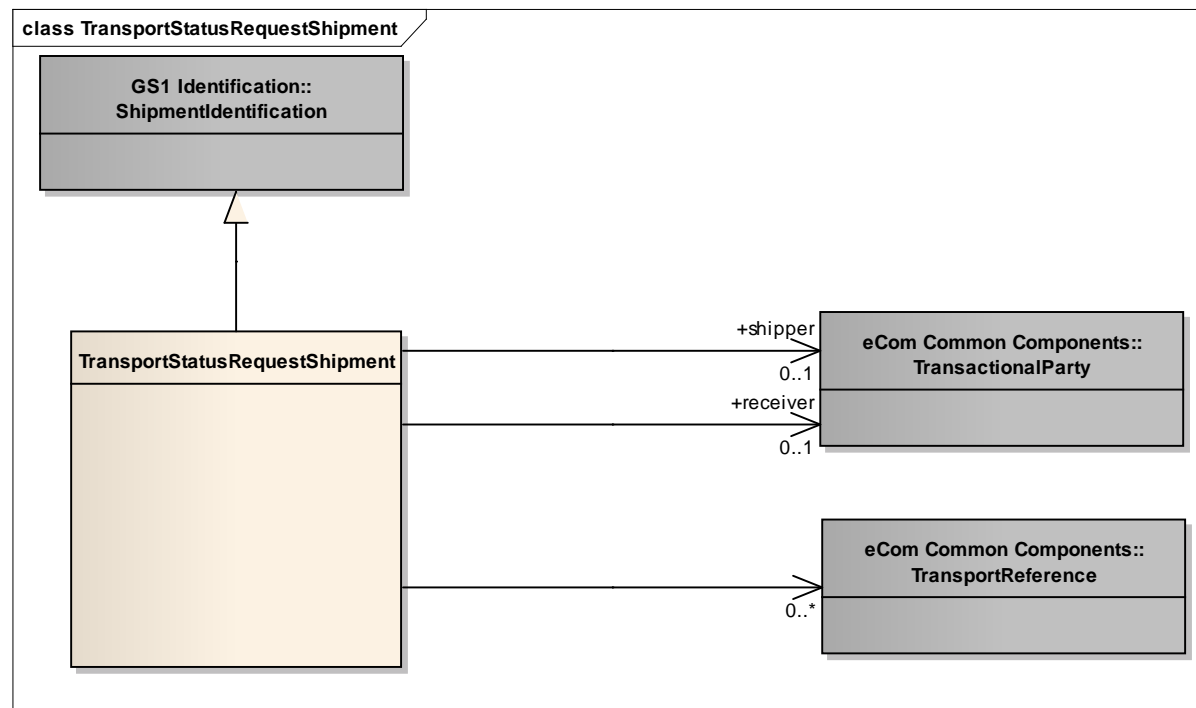
GDD Report

content	multiplicity	attribute / role	datatype /secondary class	definition	requirements
TransportStatusRequestConsignment				Information identifying the consignment for which transport status information is being requested.	
Association	0..*		TransportReference	References to the commercial transaction or to transport or legal documents related to the consignment.	BRAD TM CON19

content	multiplicity	attribute / role	datatype /secondary class	definition	requirements
Association	0..1	consignee	TransactionalPart y	The party receiving a consignment of goods.	BRAD TM CON1
Generalization			ConsignmentIdentification	The unique identifier for this consignment.	BRAD TM CON3
Association	0..1	consignor	TransactionalPart y	The party despatching a consignment of goods.	BRAD TM CON1

4.1.2. Transport Status Request – Shipment

Class Diagram

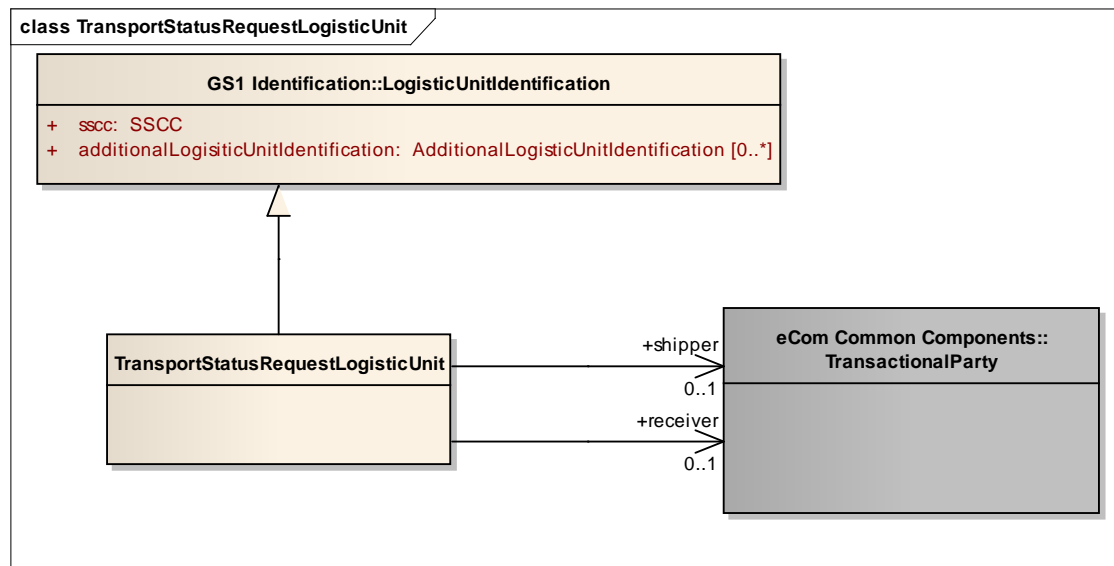


GDD Report

content	multiplicity	attribute / role	datatype /secondary class	definition	requirements
TransportStatusRequestShipment				Information identifying the shipment for which transport status information is being requested	
Association	0..1	shipper	TransactionalParty	A party which engages in shipping this shipment of goods.	BRAD TM SHM1
Association	0..1	receiver	TransactionalParty	A party which engages in receiving this shipment of goods.	BRAD TM SHM1
Association	0..*		TransportReference	References to the commercial transaction or to transport and legal documents related to the shipment.	BRAD TM SHM16
Generalization			ShipmentIdentification	The unique identifier for this shipment.	BRAD TM SHM4

4.1.3. Transport Status Request - Logistic Unit

Class Diagram

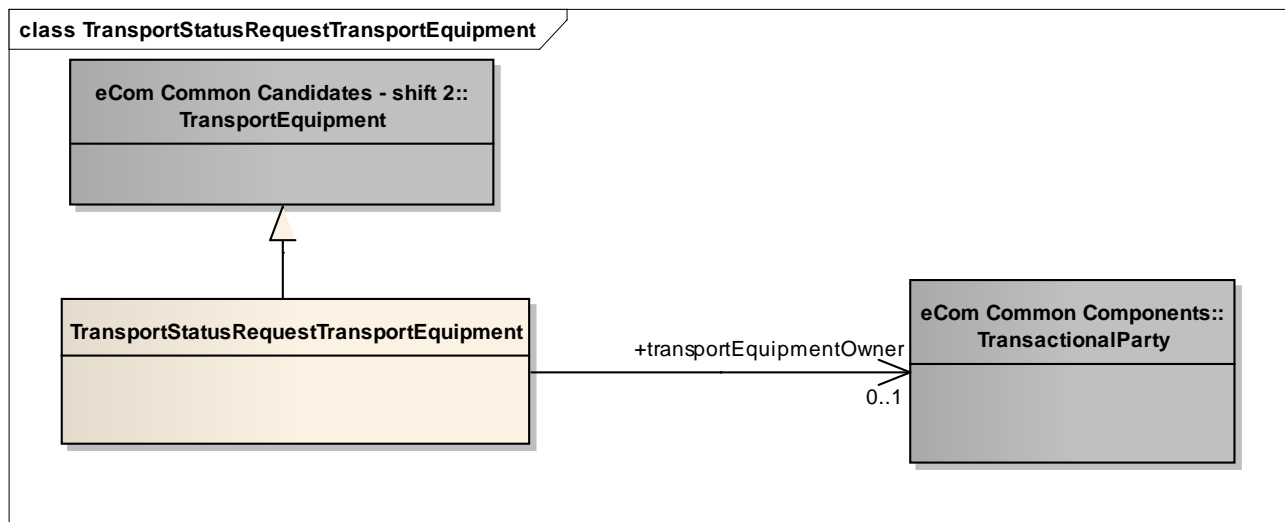


GDD Report

content	multiplicity	attribute / role	datatype /secondary class	Definition	requirements
TransportStatusRequestLogisticUnit				Information identifying the logistic unit for which transport status information is being requested.	
Generalization			LogisticUnitIdentification	The unique identifier for this logistic unit.	
Association	0..1	shipper	TransactionalParty	A party which engages in shipping this shipment of goods.	
Association	0..1	receiver	TransactionalParty	A party which engages in receiving this shipment of goods.	

4.1.4. Transport Status Request - Transport Equipment

Class Diagram

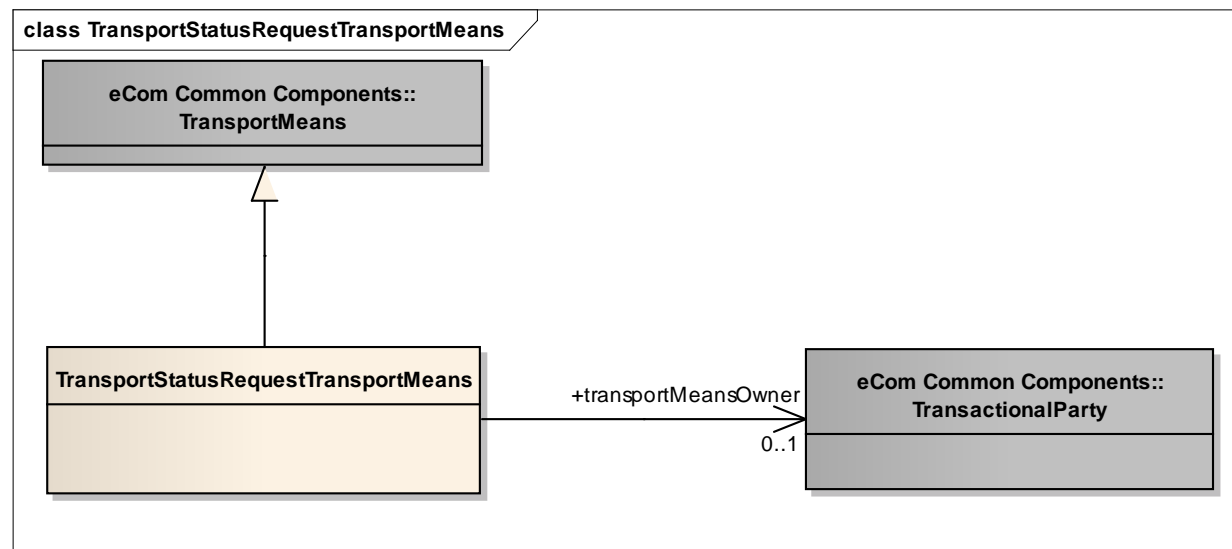


GDD Report

content	multiplicity	attribute / role	datatype /secondary class	definition	requirements
TransportStatusRequestTransportEquipment				Information identifying the piece of transport equipment for which transport status information is being requested.	
Generalization			TransportEquipment	Details describing and identifying the piece of transport equipment.	BRAD TM TEQ1,7
Association	0..1	transportEquipmentOwner	TransactionalParty	The party who owns the piece of transport equipment.	BRAD TM - new requirement

4.1.5. Transport Status Request - Transport Means

Class Diagram

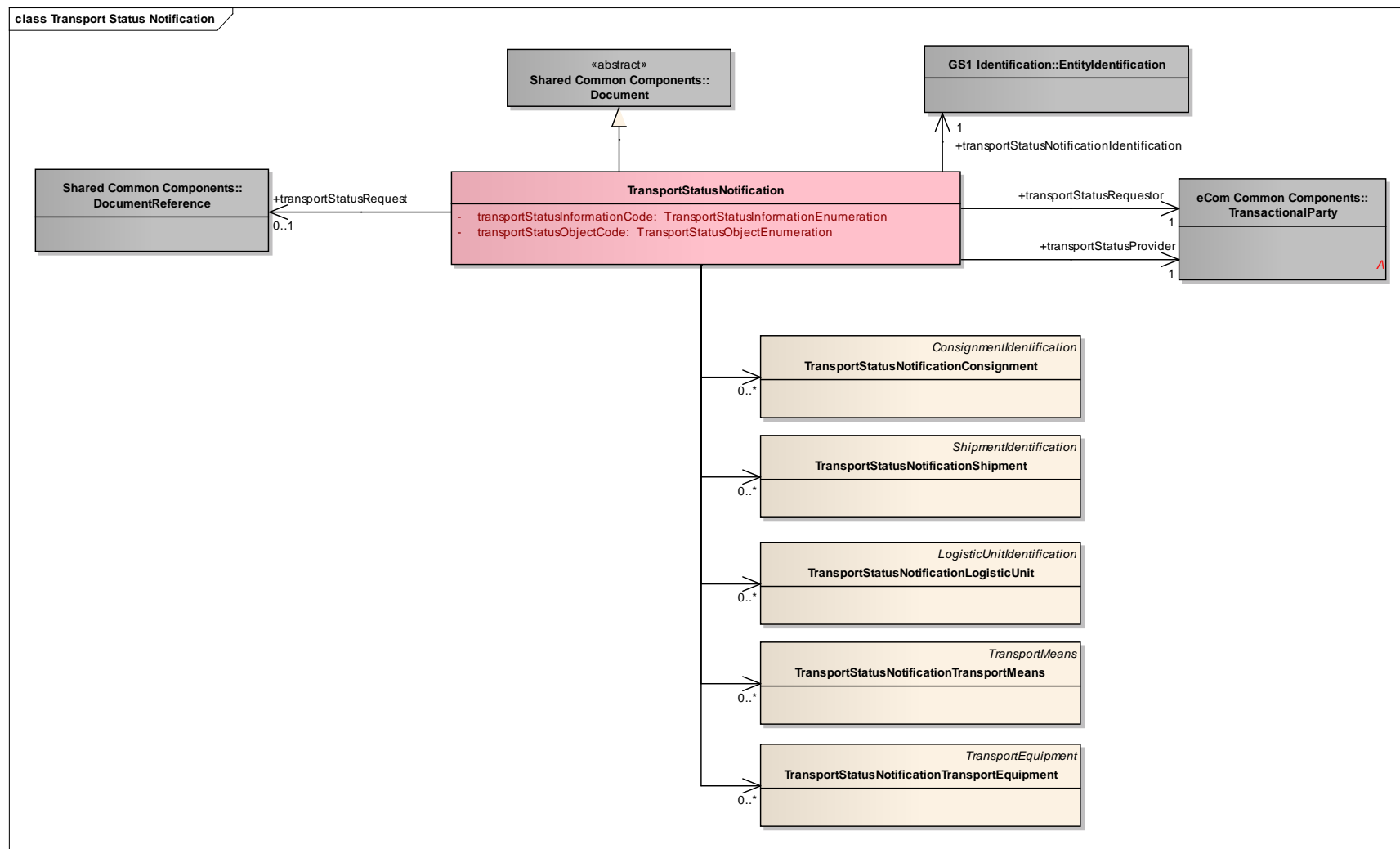


GDD Report

content	multiplicity	attribute / role	datatype /secondary class	definition	requirements
TransportStatusRequestTransport Means				Information identifying the transport means for which transport status information is being requested.	
Generalization			TransportMeans	Details describing and identifying the transport means.	BRAD TM TME1,2,3
Association	0..1	transportMeansOwner	TransactionalParty	The party who owns the transport means	BRAD TM - new requirement

4.2. Transport Status Notification (message)

Class Diagram



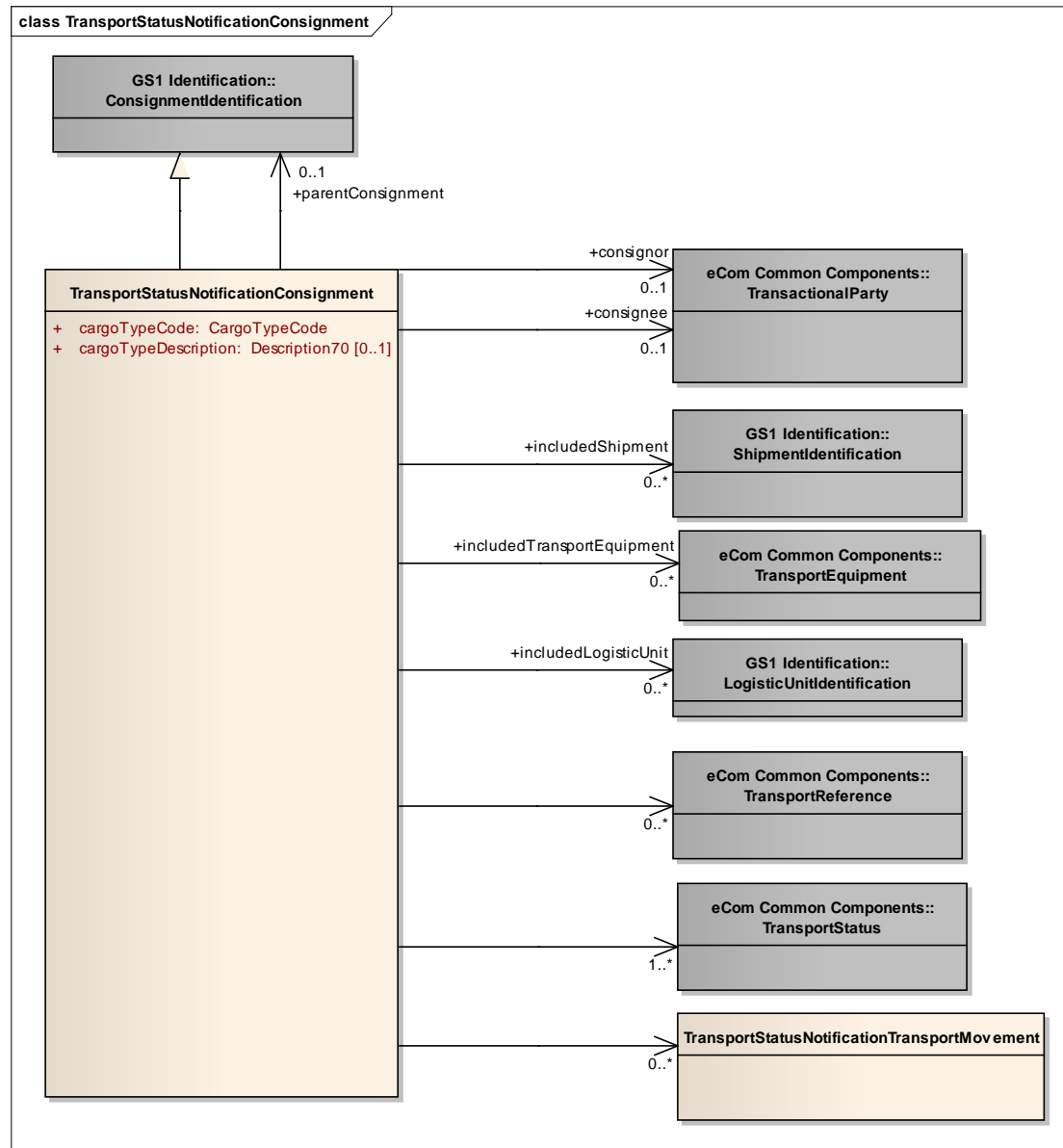
GDD Report

content	attribute / role	datatype /secondary class	multi plicit y	Definition	requirements
TransportStatus Notification				Message providing information on the transport status and movements of a transport related object.	
Generalization		Document		Provides the generic document details for the transport status notification.	
Association	transportStatusReq uestor	TransactionalPart y	1..1	A party that requests transport status information from another party.	
Association	transportStatusPro vider	TransactionalPart y	1..1	A party that provides transport status information to another party.	
Association	transportStatusReq uest	DocumentReferen ce	0..1	Optional reference to the transport status request that triggered the sending of the transport status notification.	
Association		TransportStatusN otificationConsign ment	0..*	Information on the status and movements of a consignment.	
Association		TransportStatusN otificationShipmen t	0..*	Information on the status and movements of a shipment.	
Association		TransportStatusN otificationLogistic Unit	0..*	Information on the status and movements of a logistic unit.	
Association		TransportStatusN otificationTranspo rtMeans	0..*	Information on the status, movements and event log of a transport means.	
Association		TransportStatusN otificationTranspo rtEquipment	0..*	Information on the status, movements and event log of a piece of transport equipment.	
Association	transportStatusNoti ficationIdentificatio n	EntityIdentification	1 ..1	The identification of the transport status notification document.	
Attribute	transportStatusInfo rmationCode	TransportStatusIn formationEnumer ation	1..1	Code specifying the type of transport status information that is being requested. Example: STATUS_ONLY.	

content	attribute / role	datatype /secondary class	multi plicit y	Definition	requirements
Attribute	transportStatusObj ectCode	TransportStatusO bjectEnumeration	1..1	Code specifying the type of object for which transport status information is being requested. Example: CONSIGNMENT.	

4.2.1. Transport Status Notification – Consignment

Class Diagram

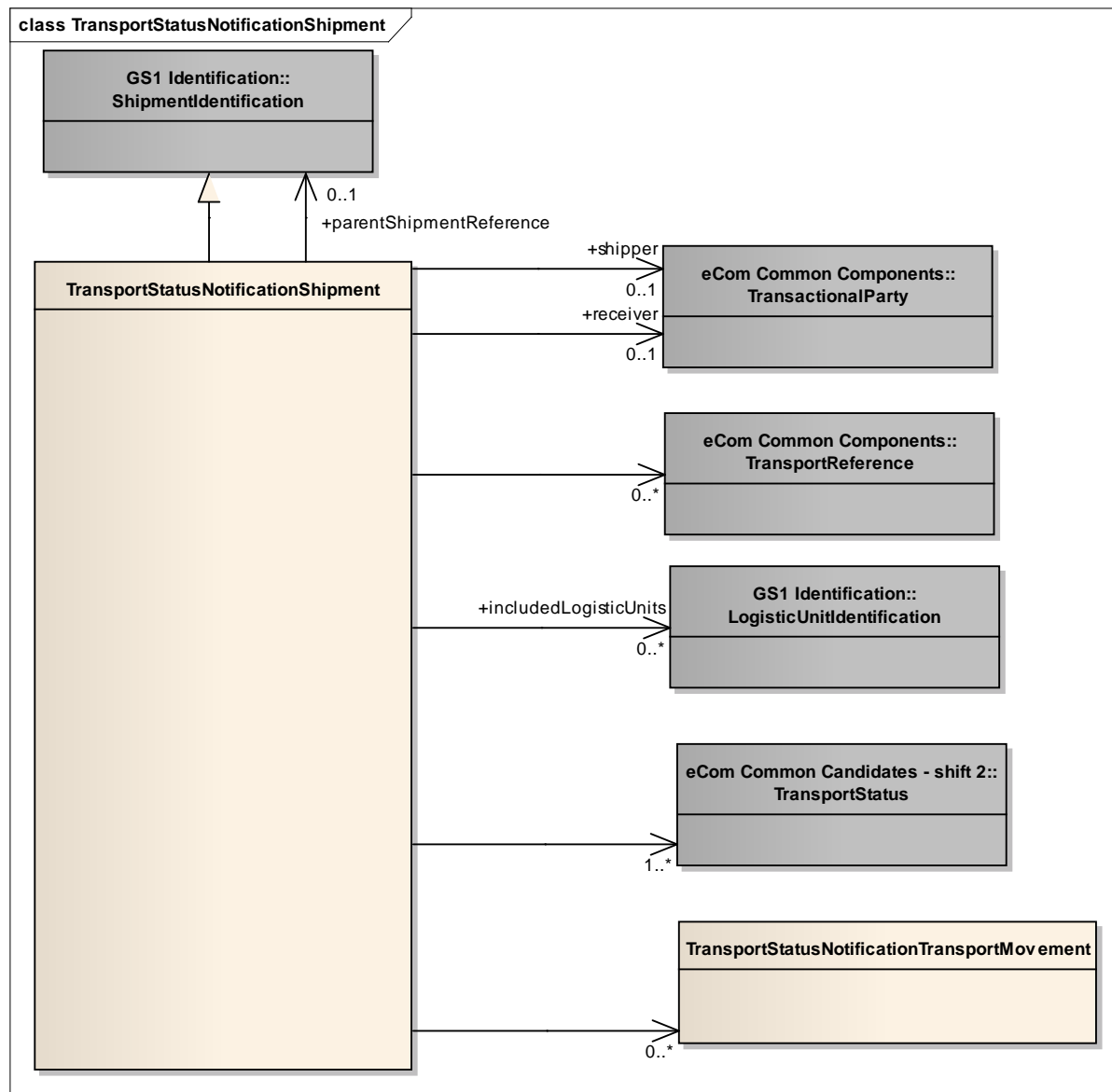


GDD Report

content	multiplicity	attribute / role	datatype /secondary class	definition	requirements
TransportStatusNotificationConsignment				Information on the status and movements of a consignment.	
Association	0..*	includedLogisticUnit	LogisticUnitIdentification	Identification of the logistic units contained in the consignment.	
Association	0..1	consignor	TransactionalParty	The party despatching a consignment of goods.	BRAD TM CON1
Association	0..1	consignee	TransactionalParty	The party receiving a consignment of goods.	BRAD TM CON1
Association	0..1	parentConsignment	ConsignmentIdentification	Reference to a consignment that contains this consignment (and several other consignments).	BRAD TM CON22
Association	0..*	includedShipment	ShipmentIdentification	Reference to the shipment(s) contained in this consignment.	BRAD TM CON28
Association	0..*		TransportReference	References to the commercial transaction or to transport or legal documents related to the consignment.	BRAD TM CON19
Association	0..*	includedTransportEquipment	TransportEquipment	Details on the transport equipment contained in the consignment.	
Association	1..*		TransportStatus	The transport status details for this consignment.	
Association	0..*		TransportStatusNotificationTransportMovement	The transport movement details for this consignment.	
Generalization			ConsignmentIdentification	The unique identifier for this consignment.	BRAD TM CON2
Attribute	1..1	cargoTypeCode	CargoTypeCode	Code specifying the classification of a type of cargo for example hazardous cargo.	BRAD CON8, CIT4, SHI4
Attribute	[0..1]	cargoTypeDescription	Description70	Free text specifying the classification of a type of cargo.	BRAD CON8, CIT4, SHI5

4.2.2. Transport Status Notification – Shipment

Class Diagram

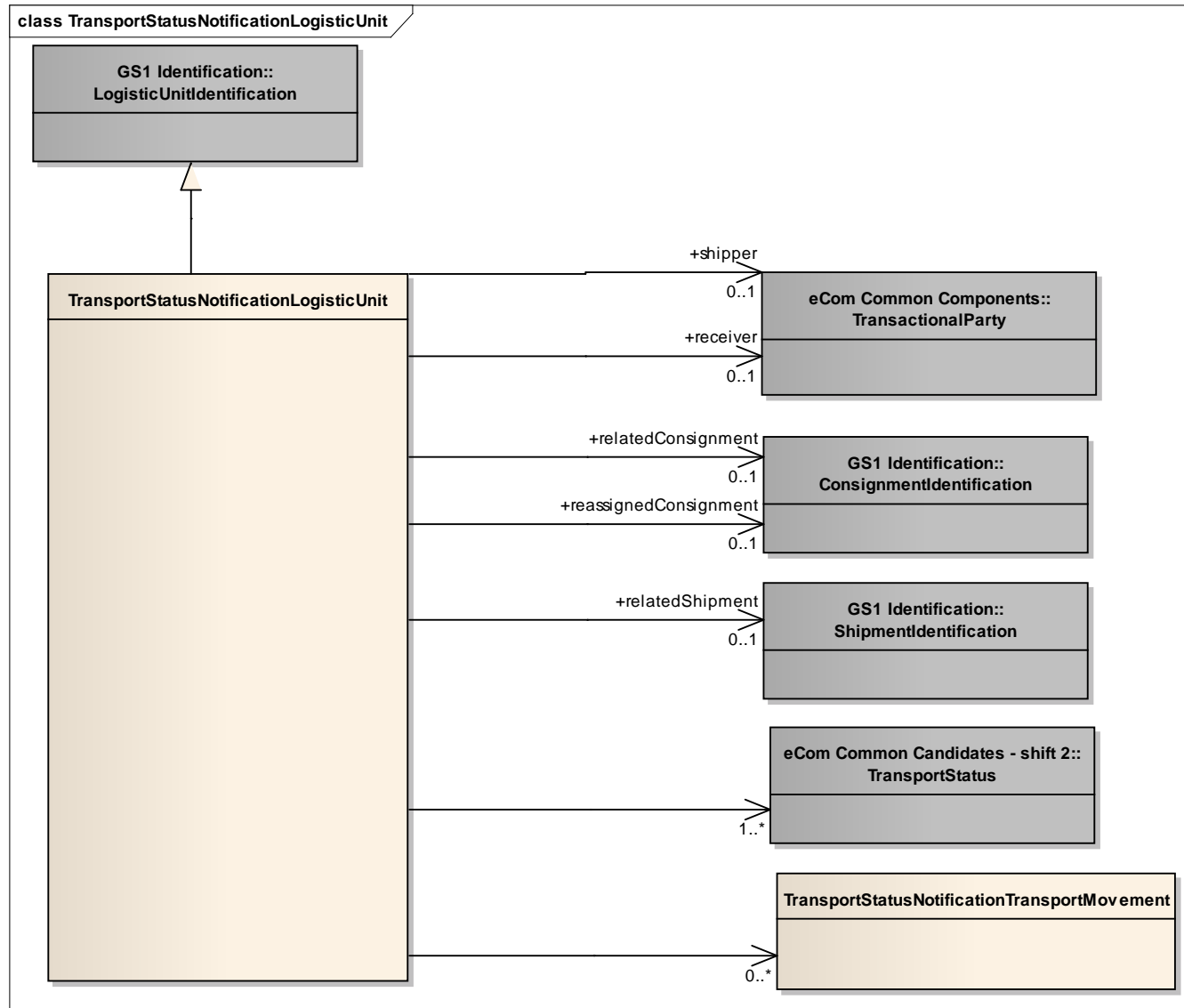


GDD Report

content	multiplicity	attribute / role	datatype /secondary class	definition	requirements
TransportStatusNotificationShipment				Information on the status and movements of a shipment.	
Association	0..*		TransportReference	The transport movement details for this shipment.	BRAD TM SHM16
Association	0..*	includedLogisticUnits	LogisticUnitIdentification	Identification of the logistic units contained in the shipment.	
Association	0..1	shipper	TransactionalParty	A party which engages in shipping this shipment of goods.	BRAD TM SHM1
Association	0..1	receiver	TransactionalParty	A party which engages in receiving this shipment of goods.	BRAD TM SHM1
Association	0..1	parentShipmentReference	ShipmentIdentification	The unique identifier for this shipment.	
Association	1..*		TransportStatus	The transport status details for this shipment.	
Association	0..*		TransportStatusNotificationTransportMovement	The transport movement details for this shipment.	BRAD TM SHM3
Generalization			ShipmentIdentification	The unique identifier for this shipment.	BRAD TM SHM4

4.2.3. Transport Status Notification - Logistic Unit

Class Diagram

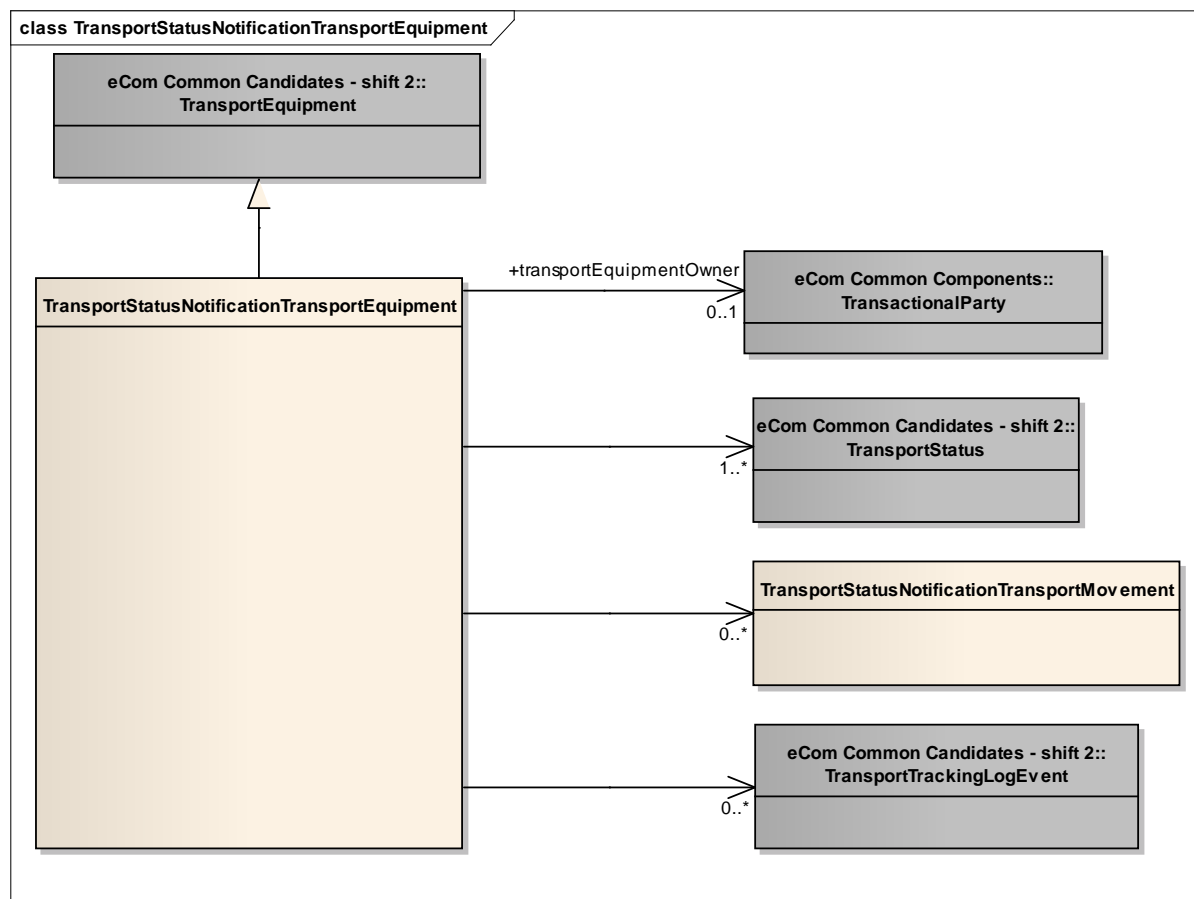


GDD Report

content	multiplicity	attribute / role	datatype /secondary class	definition	requirements
TransportStatusNotificationLogisticUnit				Information on the status and movements of a logistic unit.	
Association	0..1	relatedShipment	ShipmentIdentification	Identification of the shipment in which the logistic unit is contained.	
Association	0..1	reassignedConsignment	ConsignmentIdentification	Identification of the consignment to which the logistic unit has been reassigned.	
Association	0..1	shipper	TransactionalParty	A party which engages in shipping this logistic unit.	
Association	0..1	receiver	TransactionalParty	A party which engages in receiving this logistic unit.	
Association	1..*		TransportStatus	The transport status details for this logistic unit.	
Association	0..*		TransportStatusNotificationTransportMovement	The transport movement details for this logistic unit.	
Generalization			LogisticUnitIdentification	The unique identifier for this logistic unit.	
Association	0..1	relatedConsignment	ConsignmentIdentification	Identification of the consignment in which the logistic unit is contained.	

4.2.4. Transport Status Notification - Transport Equipment

Class Diagram



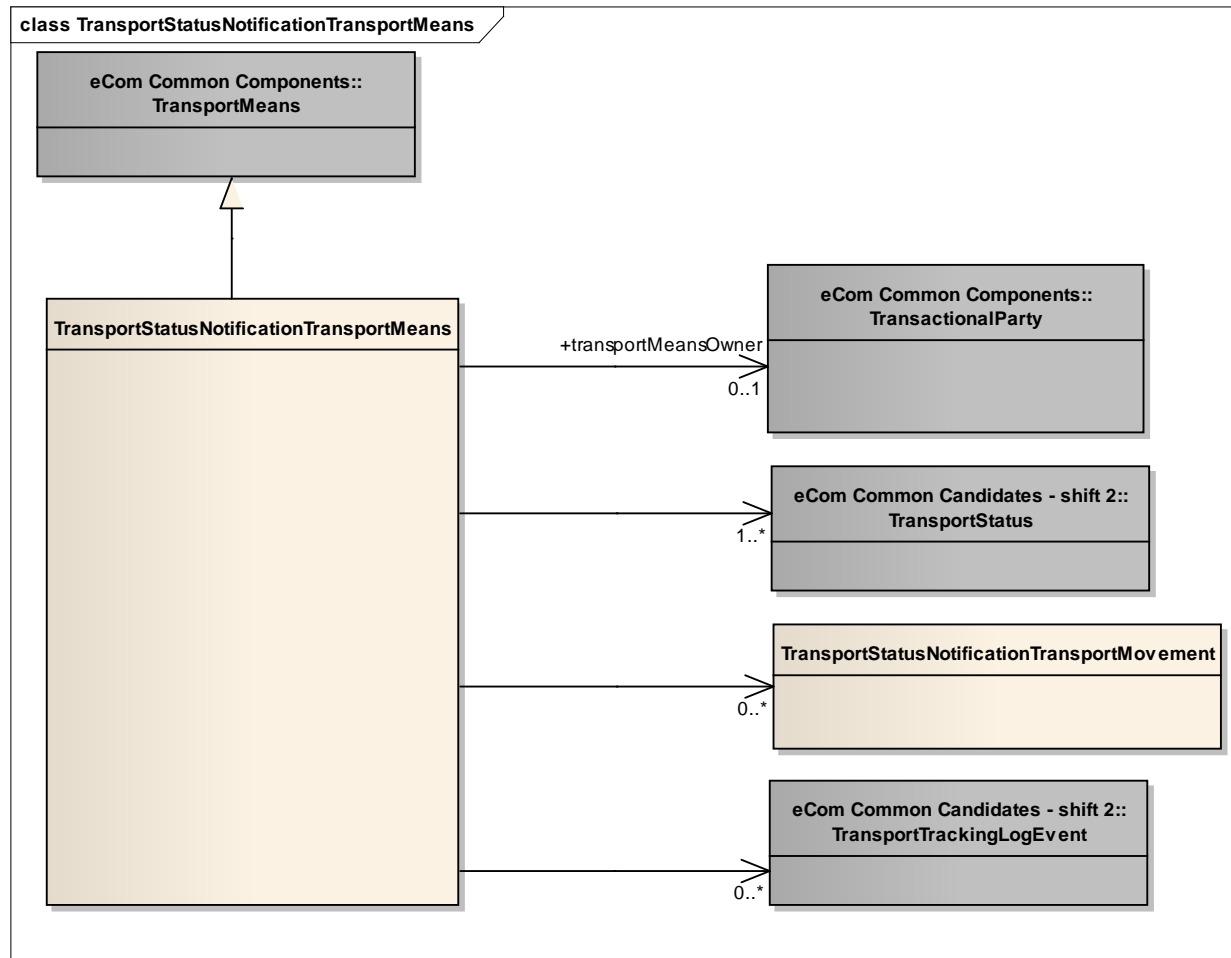
GDD Report

content	multiplicity	attribute / role	datatype /secondary class	definition	requirements
TransportStatusNotificationTransportEquipment				Information on the status, movements and event log of a piece of transport equipment.	
Generalization			TransportEquipment	Details describing and identifying the piece of transport equipment.	BRAD TM TEQ1,7

content	multiplicity	attribute / role	datatype /secondary class	definition	requirements
Association	0..1	transportEquipment Owner	TransactionalParty	The party who owns the piece of transport equipment.	BRAD TM - new requirement
Association	1..*		TransportStatus	The transport status details for this piece of transport equipment.	
Association	0..*		TransportStatusNotificationTransportMovement	The transport movement details for this piece of transport equipment.	
Association	0..*		TransportTrackingLogEvent	The transport tracking details for this piece of transport equipment.	

4.2.5. Transport Status Notification - Transport Means

Class Diagram

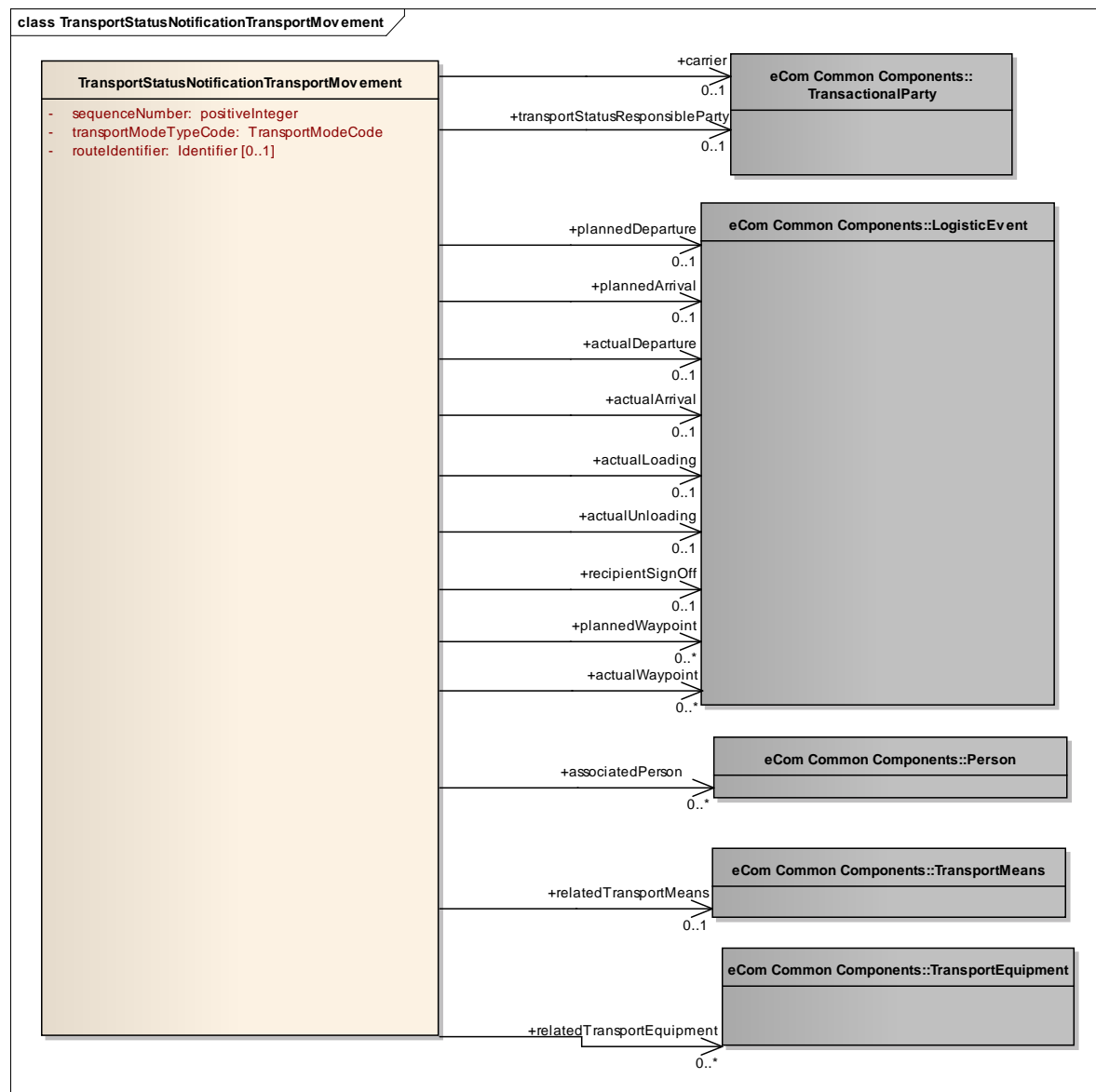


GDD Report

content	multiplicity	attribute / role	datatype /secondary class	definition	requirements
TransportStatusNotificationTransportMeans				Information on the status, movements and event log of a transport means.	
Generalization			TransportMeans	Details describing and identifying the transport means.	BRAD TM TME1,2,3
Association	0..1	transportMeansOwner	TransactionalParty	The party who owns the transport means	BRAD TM - new requirement
Association	1..*		TransportStatus	The transport status details for this transport means.	
Association	0..*		TransportStatusNotificationTransportMovement	The transport movement details for this transport means.	
Association	0..*		TransportTrackingLogEvent	The transport tracking details for this transport means.	

4.2.6. Transport Status Notification - Transport Movement

Class Diagram



GDD Report

content	multiplicity	attribute / role	datatype /secondary class	definition	requirements
TransportStatusNotification TransportMovement					
Association	0..1	relatedTransportMeans	TransportMeans	The type of vehicle, aircraft, vessel or other device used for the transport of goods in this transport movement.	BRAD TM TMV19
Association	0..*	relatedTransportEquipment	TransportEquipment	The type of trailer, container, ULD or other device used for the transport of goods in this transport movement.	BRAD TM TMV19
Association	0..1	carrier	TransactionalParty	A party that physically transports goods from one place to another.	BRAD TM TMV5
Association	0..*	associatedPerson	Person	A person associated with the execution of this transport movement, for example the driver.	BRAD TM TMV9
Association	0..1	transportStatusResponsibleParty	TransactionalParty	Party in charge of collecting and forwarding the information about the transport movement.	BRAD TM TMV17
Association	0..1	recipientSignOff	LogisticEvent	Details on the sign-off of the receipt at the arrival location, such as the responsible person.	BRAD TM - new requirement
Association	0..1	actualArrival	LogisticEvent	The actual time of arrival on the designated arrival location.	BRAD TM TMV11
Association	0..1	actualDeparture	LogisticEvent	The actual time of departure from the designated departure location.	BRAD TM TMV10
Association	0..1	actualLoading	LogisticEvent	The actual time and location of loading.	BRAD TM TMV14
Association	0..1	actualUnloading	LogisticEvent	The actual time and location of unloading.	BRAD TM TMV15
Association	0..1	plannedDeparture	LogisticEvent	The expected time of departure from the designated departure location.	BRAD TM TMV12

content	multiplicity	attribute / role	datatype /secondary class	definition	requirements
Association	0..*	plannedWaypoint	LogisticEvent	An administrative procedure taking place at a specific location that may have an effect on the lead time of a transport movement, such as dangerous goods handling, customs clearance, ...	
Association	0..*	actualWaypoint	LogisticEvent	An administrative procedure taking place at a specific location that may have an effect on the lead time of a transport movement, such as dangerous goods handling, customs clearance, ...	
Association	0..1	plannedArrival	LogisticEvent	The expected time of arrival on the designated arrival location.	BRAD TM TMV13
Attribute	1..1	sequenceNumber	positiveInteger	Unique number identifying the sequence of this transport movement with respect to the other specified movements.	
Attribute	1..1	transportModeTypeCode	TransportModeCode	Code specifying the transportation mode used for this transport movement.	BRAD TMV2
Attribute	[0..1]	routeIdentifier	Identifier	Unique identifier of the standard route that will be used for this transport movement.	BRAD TMV8

4.3. Enumerations (message specific)

4.3.1. TransportStatusInformationEnumeration

Code	Code Description
STATUS_ONLY	Only the transport status details are included.
EVENT_LOG_ONLY	Only the event log details are included.
STATUS_AND_MOVEMENT	Transport status and transport movement details are included.
STATUS_MOVEMENT_AND_EVENT_LOG	Transport status, transport movement and transport tracking details are included.
INFORMATION_ON_DELIVERY	The information represents the Information on Delivery (IoD): The formal report on the final execution status of deliveries specified in a transport instruction.

4.3.2. TransportStatusObjectEnumeration

Code	Code Description
CONSIGNMENT	The primary object for the transport status report is a consignment. Information on the related transport means and equipment may be provided.
SHIPMENT	The primary object for the transport status report is a shipment. Information on the related transport means and equipment may be provided.
LOGISTIC_UNIT	The primary object for the transport status report is a logistic unit. Information on the related transport means and equipment may be provided.
TRANSPORT_MEANS	The primary object for the transport status report is a transport means.
TRANSPORT_EQUIPMENT	The primary object for the transport status report is a piece of transport equipment.

4.4. Codelists



Note: Reference Shared Common Library Business Message (BMS) Release 3.0.0 and eCom Domain Common Library Business Message (BMS) Release 3.0.0 for all Code Lists

Class	Codelist	Referenced in
TransportStatusNotificationConsignment	CargoTypeCode	eCom Domain Common Library Business Message (BMS) Release 3.0.0
TransportStatusNotificationTransportMovement	TransportModeCode	eCom Domain Common Library Business Message (BMS) Release 3.0.0

5. Business Message Examples

5.1. Status Request - Consignment Status and Movement

TransportStatusRequest	
creationDateTime	2011-01-12T12:00:00
documentStatusCode	ORIGINAL
transportStatusObjectCode	CONSIGNMENT
transportStatusInformationCode	STATUS_AND_MOVEMENT
EntityIdentification (+transportStatusRequestIdentification)	
uniqueCreatorIdentification	TRSR00001
TransactionalParty (+transportStatusProvider)	
gln	4048623000003
TransactionalParty (+transportStatusRequestor)	
gln	7365566156190
TransportStatusRequestConsignment	
ginc	7365566156191234567
TransactionalParty (+consignor)	
gln	7365566156190
TransactionalParty (+consignee)	
gln	7300011234566

5.2. Status Notification - Consignment Status and Movement

TransportStatusNotification	
creationDateTime	2011-01-12T12:10:00
documentStatus	ORIGINAL
transportStatusInformationCode	STATUS_AND_MOVEMENT
transportStatusObjectCode	CONSIGNMENT
EntityIdentification (+transportStatusNotificationIdentification)	
uniqueCreatorIdentification	TRSN00001
TransactionalParty (+transportStatusRequestor)	
gln	7365566156190
TransactionalParty (+transportStatusProvider)	
gln	4048623000003
DocumentReference (+transportStatusRequest)	

uniqueCreatorIdentification	TRSR00001
TransportStatusNotificationConsignment	
Ginc	7365566156191234567
cargoType	21
TransactionalParty (+consignor)	
Gln	7365566156190
TransactionalParty (+consignee)	
Gln	7300011234566
TransportStatus	
transportStatusConditionCode	29
TransportStatusNotificationTransportMovement	
sequenceNumber	1
transportModeTypeCode	30
LogisticEvent (+actualDeparture)	
DateOptionalTime (+logisticEventDateTime)	
date	2011-01-14
time	11:08:00
LogisticLocation	
Address	
city	Stockholm
LogisticEvent (+actualArrival)	
DateOptionalTime (+logisticEventDateTime)	
date	2011-01-14
time	18:08:00
LogisticLocation	
Address	
city	Lund

5.3. Status Notification – Shipment - Information on Delivery (IoD)

TransportStatusNotification	
creationDateTime	2011-01-15T14:10:00
documentStatusCode	ORIGINAL
transportStatusInformationCode	INFORMATION_ON_DELIVERY
transportStatusObjectCode	SHIPMENT
EntityIdentification (+transportStatusNotificationIdentification)	
uniqueCreatorIdentification	TRSN00001
TransactionalParty (+transportStatusRequestor)	

gln	7365566156190
TransactionalParty (+transportStatusProvider)	
gln	4048623000003
TransportStatusNotificationShipment	
gsin	37365560000834055
LogisticUnitIdentification (+includedLogisticUnits)	
sscc	373655600812834054
LogisticUnitIdentification (+includedLogisticUnits)	
sscc	373655600812834061
LogisticUnitIdentification (+includedLogisticUnits)	
sscc	373655600812834078
TransportStatus	
transportStatusConditionCode	21
TransportStatusNotificationTransportMovement	
sequenceNumber	1
transportModeTypeCode	30
TransactionalParty (+carrier)	
Address	
name	DSV
LogisticEvent (+actualDeparture)	
DateOptionalTime (+logisticEventDateTime)	
date	2009-01-13
time	09:00:00
LogisticLocation	
Address	
city	Eindhoven
LogisticEvent (+actualArrival)	
DateOptionalTime (+logisticEventDateTime)	
date	2009-01-13
time	18:00:00
LogisticLocation	
Address	
city	Rotterdam
TransportMeans (+relatedTransportMeans)	
transportMeansType	31
transportMeansID	TF-69-XX
TransportEquipment (+relatedTransportEquipment)	
transportEquipmentTypeCode	14

ReturnableAssetIdentification (+individualReturnableAssetTypeIdentification)	
grai	00000000000000
additionalReturnableAssetIdentification	TRL-ABC-912; OWNER_ASSIGNED
TransportStatusNotificationTransportMovement	
sequenceNumber	2
transportModeTypeCode	10
TransactionalParty (+carrier)	
Address	
name	P&O
LogisticEvent (+actualDeparture)	
DateOptionalTime (+logisticEventDateTime)	
date	2009-01-14
time	14:00:00
LogisticLocation	
unLocationCode	NL RTM
LogisticEvent (+actualArrival)	
DateOptionalTime (+logisticEventDateTime)	
date	2009-02-23
Time	18:00:00
LogisticLocation	
unLocationCode	ZA CPT
TransportMeans (+relatedTransportMeans)	
transportMeansType	13
transportMeansName	SS Copenhagen
TransportEquipment (+relatedTransportEquipment)	
transportEquipmentTypeCode	20
ReturnableAssetIdentification(+individualReturnableAssetTypeIdentification)	
grai	00000000000000
additionalReturnableAssetIdentification	BCN001213; OWNER_ASSIGNED
TransportStatusTransportMovement	
sequenceNumber	3
transportModeTypeCode	30
TransactionalParty (+carrier)	
Address	
name	Boer Trucking
LogisticEvent (+actualDeparture)	

DateOptionalTime (+logisticEventDateTime)	
date	2009-02-25
time	09:00:00
LogisticLocation	
Address	
city	Cape Town
LogisticEvent (+actualArrival)	
DateOptionalTime (+logisticEventDateTime)	
date	2009-02-28
time	18:00:00
LogisticLocation	
Address	
city	Johannesburg
TransportMeans (+relatedTransportMeans)	
transportMeansType	31
transportMeansID	123-XYZ-76

6. Implementation Considerations

(Insert Content Here)

7. Appendices

None.

8. Summary of Changes

8.1. BMS Release 3.0

First publication

8.2. BMS Release 3.1

Change	BSD Version	Associated CR Number
<ul style="list-style-type: none"> TransportStatusRequest: changed cardinality of associations to Consignment, Shipment, Log Unit, Transport Means and Transport Equipment from 0..1 to 0..* TransportStatusNotification: changed cardinality of associations to Consignment, Shipment, Log Unit from 0..1 to 0..* 	Draft 1	WR 12-193 WR 12-194 WR 12-195 WR 12-196 WR 12-197