



Business Message Standard (BMS)

Warehousing Outbound Instruction and Notification

BMS Release 3.1

1-May-2013, Issue 1



Document Summary

Document Item	Current Value
Document Title	Business Message Standard (BMS) - Warehousing Outbound Instruction and Notification
BMS Release	3.1
Document Version	Issue 1, 1-May-2013
Working Group Name	MSWG eCom Logistics
BMS Template Version	2.3

Change Request Reference

Date of CR Submission to GSMP:	CR Submitter(s):	Refer to Change Request (CR) Number(s):

Business Requirements Document (BRAD) Reference

BRAD Title:	BRAD Date:	BRAD Version
Warehousing Inbound and Outbound processes	25-Jul-2012	1.0

Document Change History

Date of Change	Version	Changed By	Reason for Change	Summary of Change
1-May-2013	BMS 3.1 - Issue 1	Coen Janssen	Publication of BMS 3.1	First release of this standard

Disclaimer

WHILST EVERY EFFORT HAS BEEN MADE TO ENSURE THAT THE GUIDELINES TO USE THE GS1 STANDARDS CONTAINED IN THE DOCUMENT ARE CORRECT, GS1 AND ANY OTHER PARTY INVOLVED IN THE CREATION OF THE DOCUMENT HEREBY STATE THAT THE DOCUMENT IS PROVIDED WITHOUT WARRANTY, EITHER EXPRESSED OR IMPLIED, REGARDING ANY MATTER, INCLUDING BUT NOT LIMITED TO THE OF ACCURACY, MERCHANTABILITY OR FITNESS FOR A PARTICULAR PURPOSE, AND HEREBY DISCLAIM ANY AND ALL LIABILITY, DIRECT OR INDIRECT, FOR ANY DAMAGES OR LOSS RELATING TO OR RESULTING FROM THE USE OF THE DOCUMENT. THE DOCUMENT MAY BE MODIFIED, SUBJECT TO DEVELOPMENTS IN TECHNOLOGY, CHANGES TO THE STANDARDS, OR NEW LEGAL REQUIREMENTS. SEVERAL PRODUCTS AND COMPANY NAMES MENTIONED HEREIN MAY BE TRADEMARKS AND/OR REGISTERED TRADEMARKS OF THEIR RESPECTIVE COMPANIES. GS1 IS A REGISTERED TRADEMARK OF GS1 AISBL.

Table of Contents

1. Business Domain View	4
1.1. Problem Statement / Business Need	4
1.2. Objective	4
1.3. Audience	4
1.4. References	4
1.5. Acknowledgements	4
1.5.1. Work Group	4
1.5.2. Development Team Members	5
2. Business Context	5
3. Business Transaction View	6
3.1. Business Transaction – Issue Outbound Instruction	6
3.2. Business Transaction – Issue Outbound Notification	7
4. Business Information View	9
4.1. Warehousing Outbound Instruction	9
4.2. Warehousing Outbound Instruction – Shipment	11
4.3. Warehousing Outbound Instruction – Shipment Item	13
4.4. Warehousing Outbound Notification	15
4.5. Warehousing Outbound Notification – Shipment	17
4.6. Warehousing Outbound Notification – Shipment Item	19
4.7. Warehousing Outbound Instruction - Data Types	21
4.8. Warehousing Outbound Notification - Data Types	21
4.9. Enumerations (message specific)	23
4.10. External Code Lists	23
4.10.1. Warehousing Outbound Status Code	23
4.10.2. Warehousing Outbound Exception Code	24
4.10.3. Warehousing Delivery Instruction Code	25
4.10.4. WarehousingDespatchTypeCode	25
5. Business Message Examples	27
5.1. Warehousing Outbound Instruction	27
5.2. Warehousing Outbound Notification	27
5.3. Warehousing Outbound Instruction (complex example)	28
6. Implementation Considerations	30
7. Appendices	30
8. Summary of Changes	30
8.1. BMS Release 3.1	30

1. Business Domain View

1.1. Problem Statement / Business Need

This standard is part of a global GS1 solution for warehouse management that will support the optimization of warehouse management operations in a scalable way. This will ultimately take out unnecessary cost of the supply chain.

1.2. Objective

This standard defines the transaction model and data model for the following business message(s):

- Warehousing Outbound Instruction – Message that supports the warehouse outbound process, and enables a Logistic Services Client (LSC) to inform his Logistic Services Provider (LSP) that goods need to be shipped.
- Warehousing Outbound Notification – Message that supports the warehouse outbound process, and enables a Logistic Services Provider (LSP) to inform his Logistic Services Client (LSC) on the status of goods shipped on behalf of the client.

1.3. Audience

This document is intended for anyone interested in implementing the GS1 eCom standards for Transport and Logistics.

1.4. References

[LIM] GS1 Logistics Interoperability Model, 1.0, GS1 2007

[BRAD_WIO] BRAD Warehousing Inbound and Outbound Processes, 1.0, GS1 2012

[BMS_Shared] BMS Shared Common Library, 3.1, GS1 2012

[BMS_eCom] BMS eCom Common Library, 3.1, GS1 2012

[BMS_Warehousing] BMS Warehousing Common Library, 3.1, GS1 2012

1.5. Acknowledgements

The following is a list of individuals (and their companies) who participated in the creation, review and approval of this BMS.

1.5.1. Work Group

Function	Name	Company / organisation
Co-Chair	Jaco Voorspuij	DHL
Co-Chair	Fred Kempkes	Unilever
Member	Andrew Jones	General Mills, Inc.
Member	Bonnie Ryan	GS1 Australia
Member	Kurt Herregodts	GS1 Belgium & Luxembourg

Function	Name	Company / organisation
Member	Roman Strand	GS1 Germany
Member	Mia Lenman	GS1 Sweden
Member	Shan Welch	GS1 UK
Member	Geert Simmer	GSPro
Member	Dr. Karlheinz Mevissen	HAVI Logistics
Member	Robin Kidd	Nestle
Member	Mandeep Sodhi	Nestle
Member	Marc Cox	Philips Electronics N.V.
Member	Nitin Vidwans	Walmart Stores, Inc.

1.5.2. Development Team Members

Function	Name	Organisation
GSMP Process Lead	Jean-Luc Champion	GS1 GO
Standards Content Lead	Coen Janssen	GS1 GO
Technical Development Lead	Ewa Iwicka	GS1 GO
Peer Review	Eric Kauz	GS1 GO

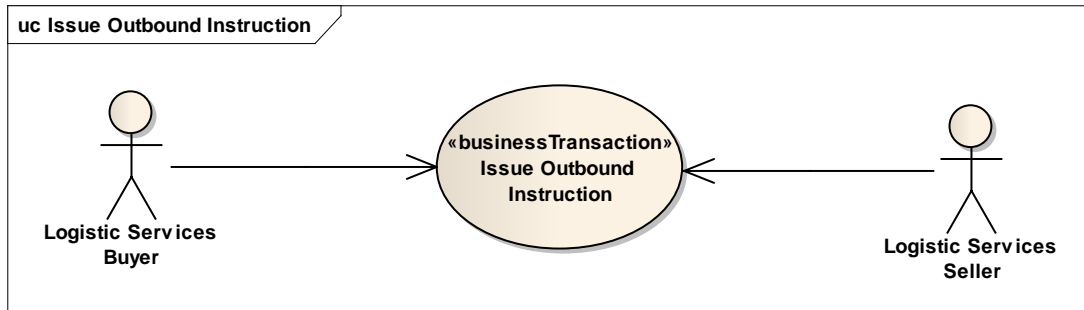
2. Business Context

Context Category	Value(s)
Industry	All
Geopolitical	All
Product	All
Process	Warehousing – Outbound Operations
System Capabilities	GS1 System
Official Constraints	None

3. Business Transaction View

3.1. Business Transaction – Issue Outbound Instruction

Use case diagram



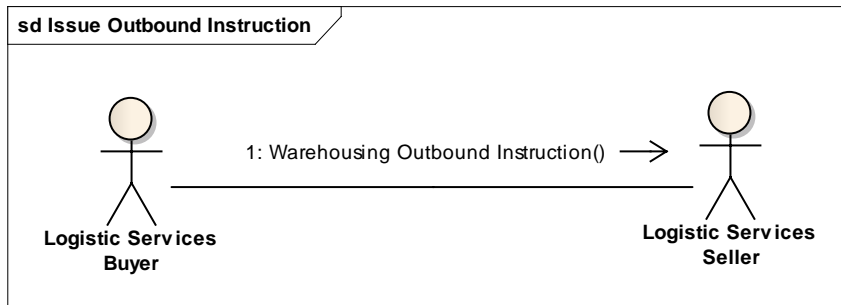
Use case description

Use Case Name	Issue Warehousing Outbound Instruction
Use Case Description	The Logistic Services Buyer (LSB) informs the Logistic Services Seller (LSS) that a shipment needs to be prepared.
Actors (Goal)	Logistic Services Buyer (LSB) Logistic Services Seller (LSS)
Performance Goals	Not applicable
Preconditions	Item master data of the goods to be shipped have been communicated to the Logistic Services Seller.
Post conditions	The Logistic Services Seller has been informed on the goods to be shipped.
Main Scenario	<ul style="list-style-type: none"> ■ LSB generates the Warehousing Outbound Instruction from his (enterprise resource planning) system. ■ LSB sends the Warehousing Outbound Instruction to the LSS. ■ LSS receives the Warehousing Outbound Instruction. ■ LSS processes the Warehousing Outbound Instruction in his (warehouse management) system.
Alternative Scenario(s)	<u><<scenario name>></u> steps
Related Requirements	
Related Rules	

Activity diagram

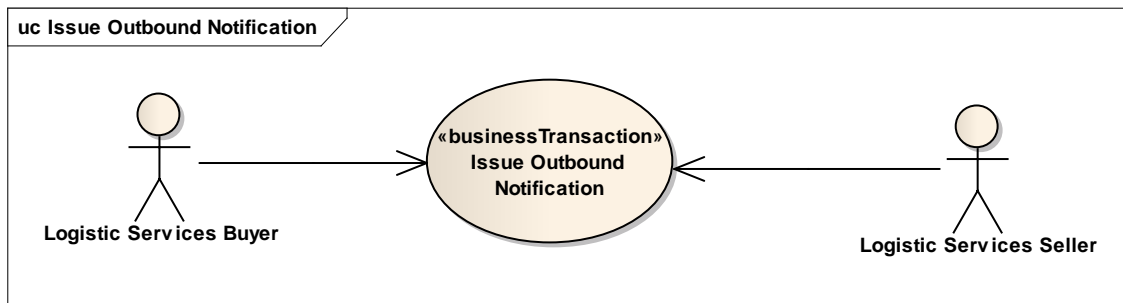
Not applicable

Communication diagram



3.2. Business Transaction – Issue Outbound Notification

Use case diagram

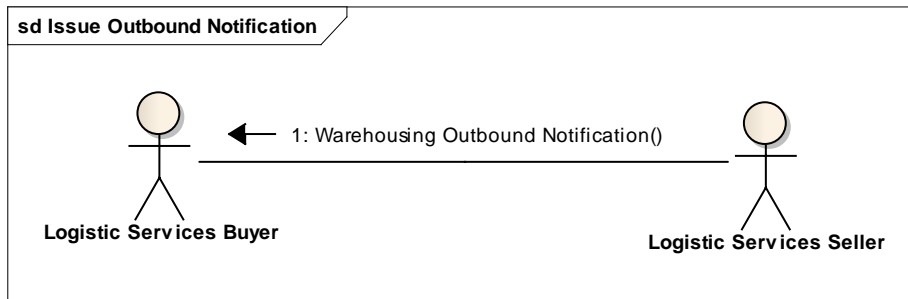


Use case description

Use Case Name	Issue Warehousing Outbound Notification
Use Case Description	The Logistic Services Seller (LSS) informs the Logistic Services Buyer (LSB) on the status of an outbound shipment that will be / has been prepared.
Actors (Goal)	Logistic Services Buyer (LSB) Logistic Services Seller (LSS)
Performance Goals	Not applicable
Preconditions	<ul style="list-style-type: none"> The Logistic Services Seller has been informed on the goods to be shipped.
Post conditions	The Logistic Services Buyer has been informed on the status of the outbound shipment.
Main Scenario	<ul style="list-style-type: none"> LSS generates the Warehousing Outbound Notification from his (warehouse management) system. LSS sends the Warehousing Outbound Notification to the LSB. LSB receives the Warehousing Outbound Notification. LSB processes the Warehousing Outbound Notification in his (enterprise resource planning) system.
Alternative Scenario(s)	Not applicable
Related Requirements	
Related Rules	

Activity diagram

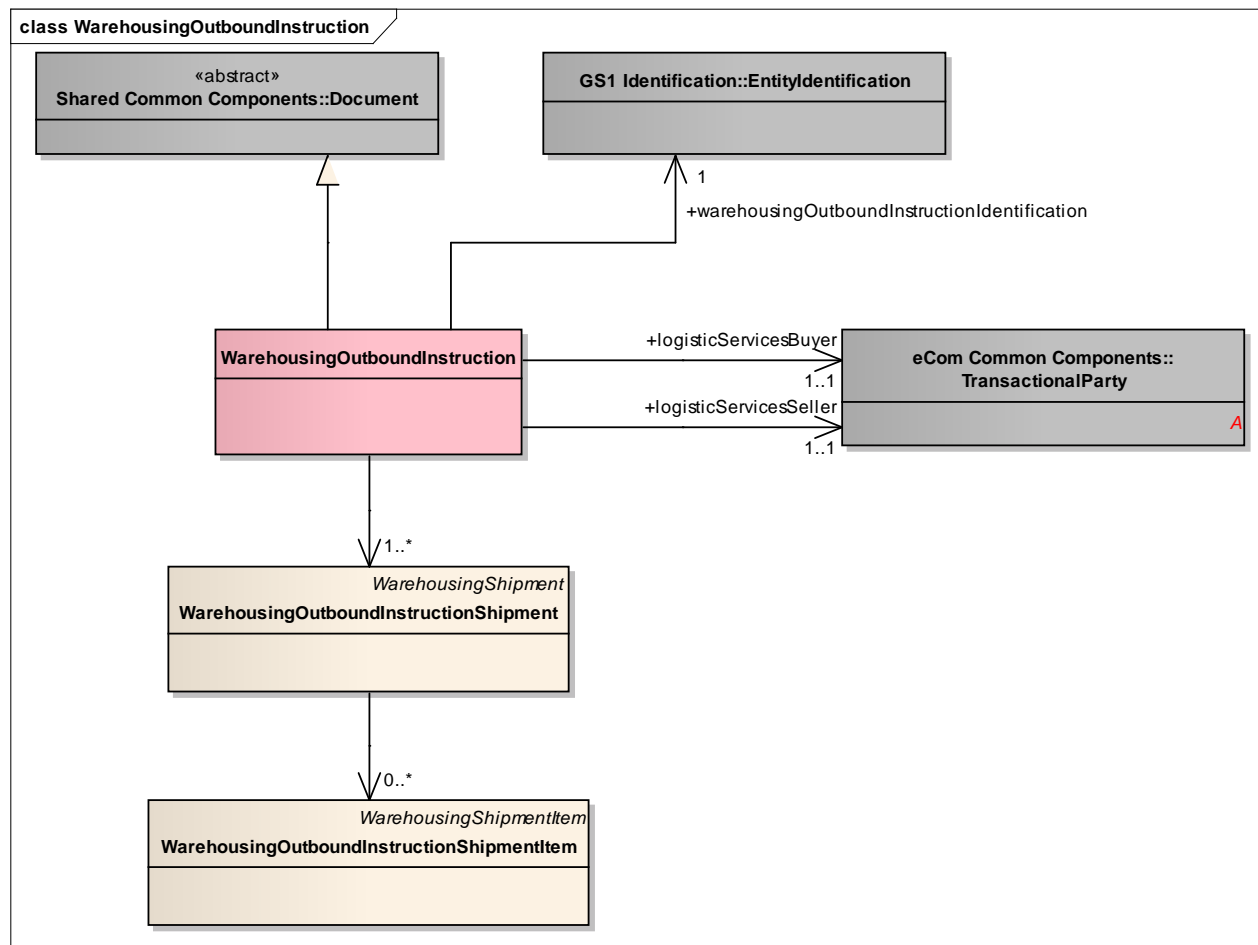
Not applicable

Communication diagram

4. Business Information View

4.1. Warehousing Outbound Instruction

Class Diagram

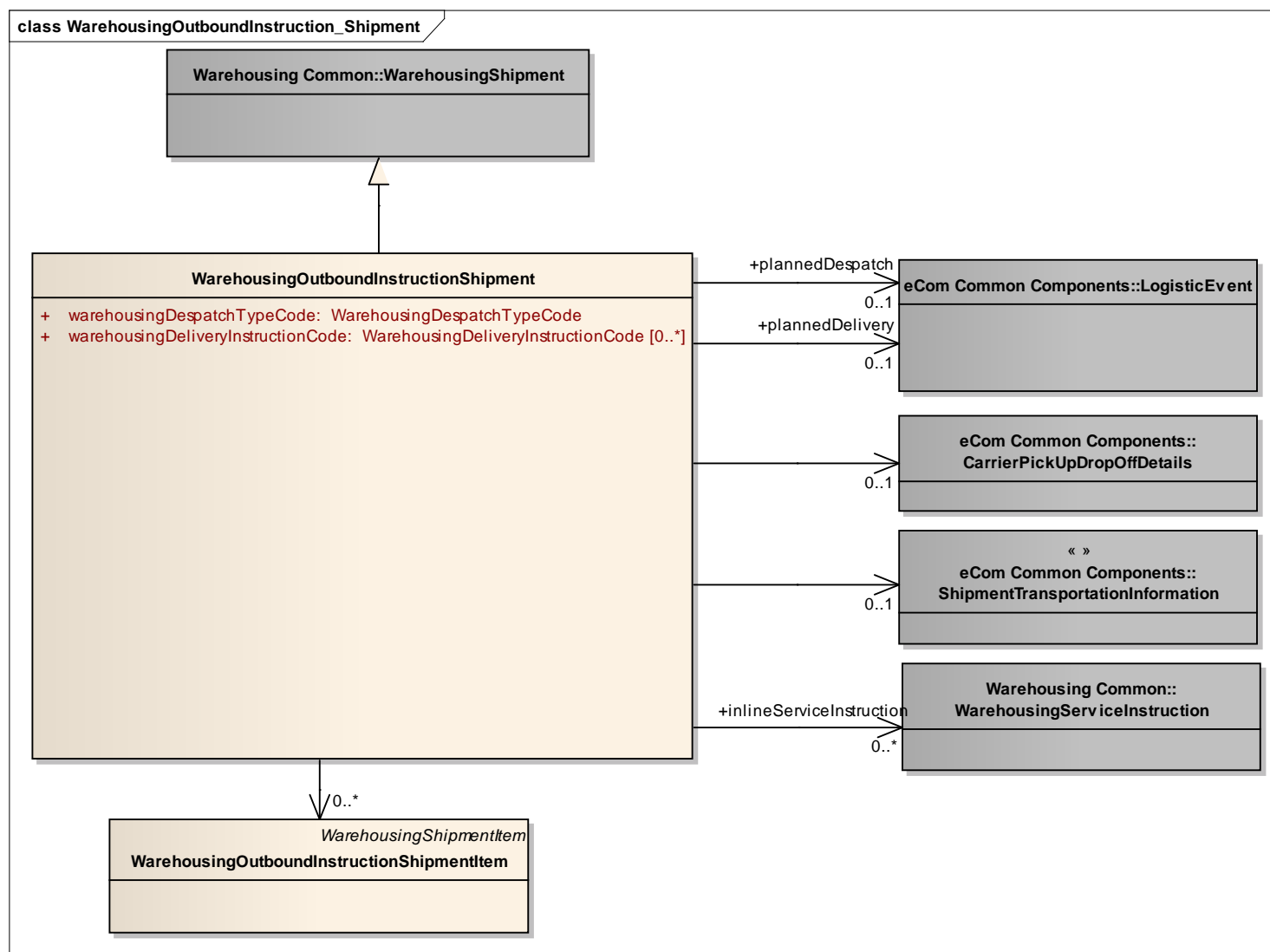


GDD Report

Content	Attribute / Role	Datatype /Secondary class	Multipli city	Definition	Requirements
WarehousingOutbound Instruction					
Association	warehousingOutboundInstru ctionIdentification	EntityIdentification	1	The identification of the warehousing outbound instruction document.	[brad-whiop:insdes-1]
Association		WarehousingOutboundInstr uctionShipment	1..*	Information on the shipments that need to be prepared by the logistics services seller.	
Generalization		Document		Used to specify basic information about the content of the message including version number, creation date and time.	[brad-whiop:insdes-1]
Association	logisticServicesSeller	TransactionalParty	1..1	A party that provides logistics services to another party.	[brad-whiop:insdes-3]
Association	logisticServicesBuyer	TransactionalParty	1..1	A party that purchases logistics services from another party.	[brad-whiop:insdes-2]

4.2. Warehousing Outbound Instruction – Shipment

Class Diagram

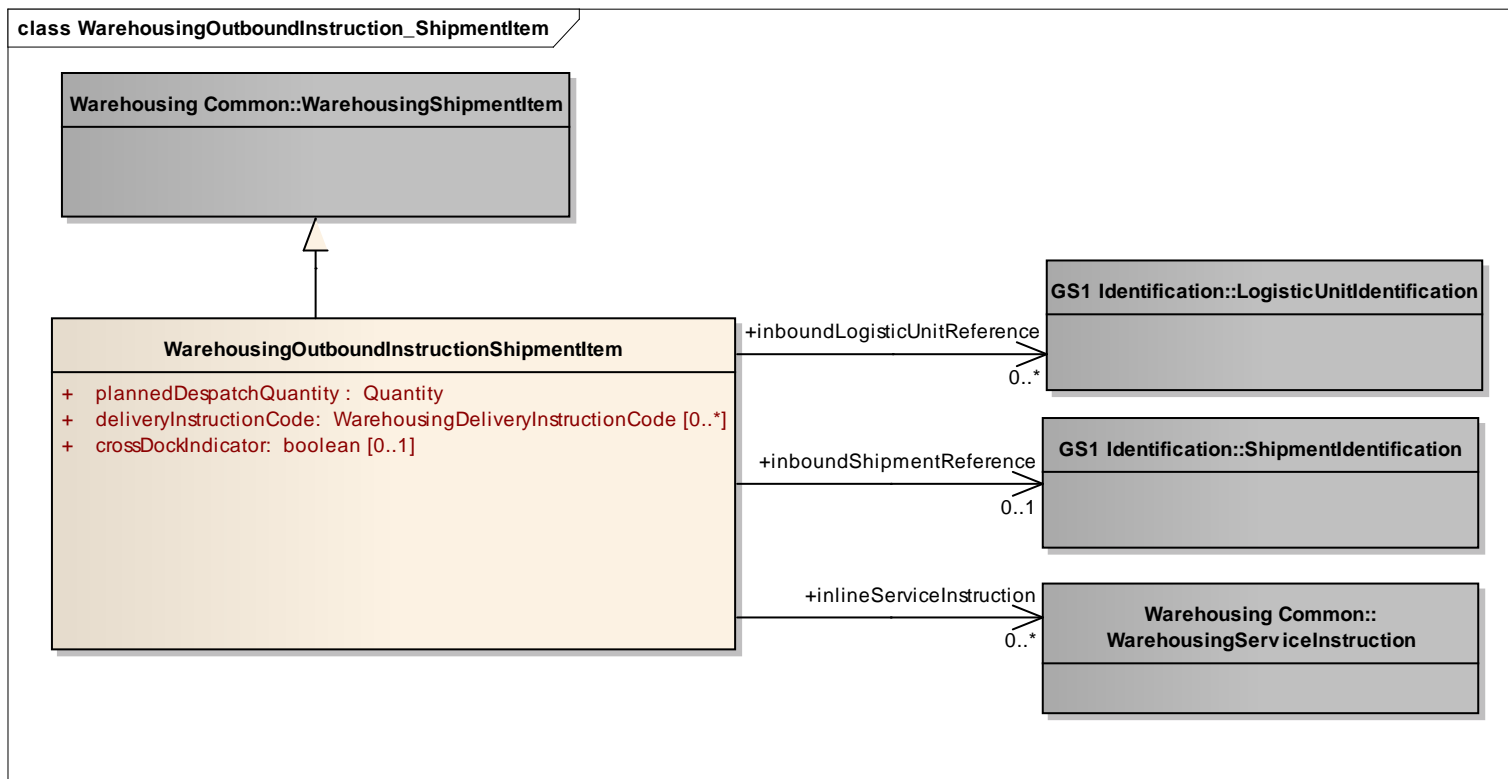


GDD Report

Content	Attribute / Role	Datatype /Secondary class	Multipli city	Definition	Requirements
WarehousingOutbound InstructionShipment				A shipment is an identifiable collection of one or more Trade Items available to be transported together from the shipper (Original Consignor/Shipper), to the receiver (Final/Ultimate Consignee).	[brad-whiop:insdes-4]
Association		WarehousingOutboundInstr uctionShipmentItem	0..*	Details on the items that need to be shipped.	
Association	inlineServiceInstruction	WarehousingServiceInstruc tion	0..*	Details on one or more services to be performed by the logistic services seller during outbound processing.	[brad-whiop:insdes-4.7]
Association		ShipmentTransportationInf ormation	0..1	Instructions on the way the shipment needs to be transported.	[brad-whiop:insdes-4.5]
Association	plannedDespatch	LogisticEvent	0..1	Details on the date and time the goods need to be despatched.	[brad-whiop:insdes-4.2]
Generalization		WarehousingShipment			
Association		CarrierPickUpDropOffDetail s	0..1	Details on the carrier that will deliver the goods.	[brad-whiop:insdes-4.6]
Association	plannedDelivery	LogisticEvent	0..1	Details on the date and time the goods need to be delivered.	[brad-whiop:insdes-4.1]
Attribute	warehousingDespatchType Code	WarehousingDespatchTyp eCode	1..1	Code specifying the type of despatch for the shipment, for example picked from stock or cross-docked.	[brad-whiop:insdes-4.3]
Attribute	warehousingDeliveryInstru ctionCode	WarehousingDeliveryInstru ctionCode	0..*	Code specifying special order / delivery conditions.	[brad-whiop:insdes-4.4] perhaps reuse some values of OrderInstructionCode

4.3. Warehousing Outbound Instruction – Shipment Item

Class Diagram



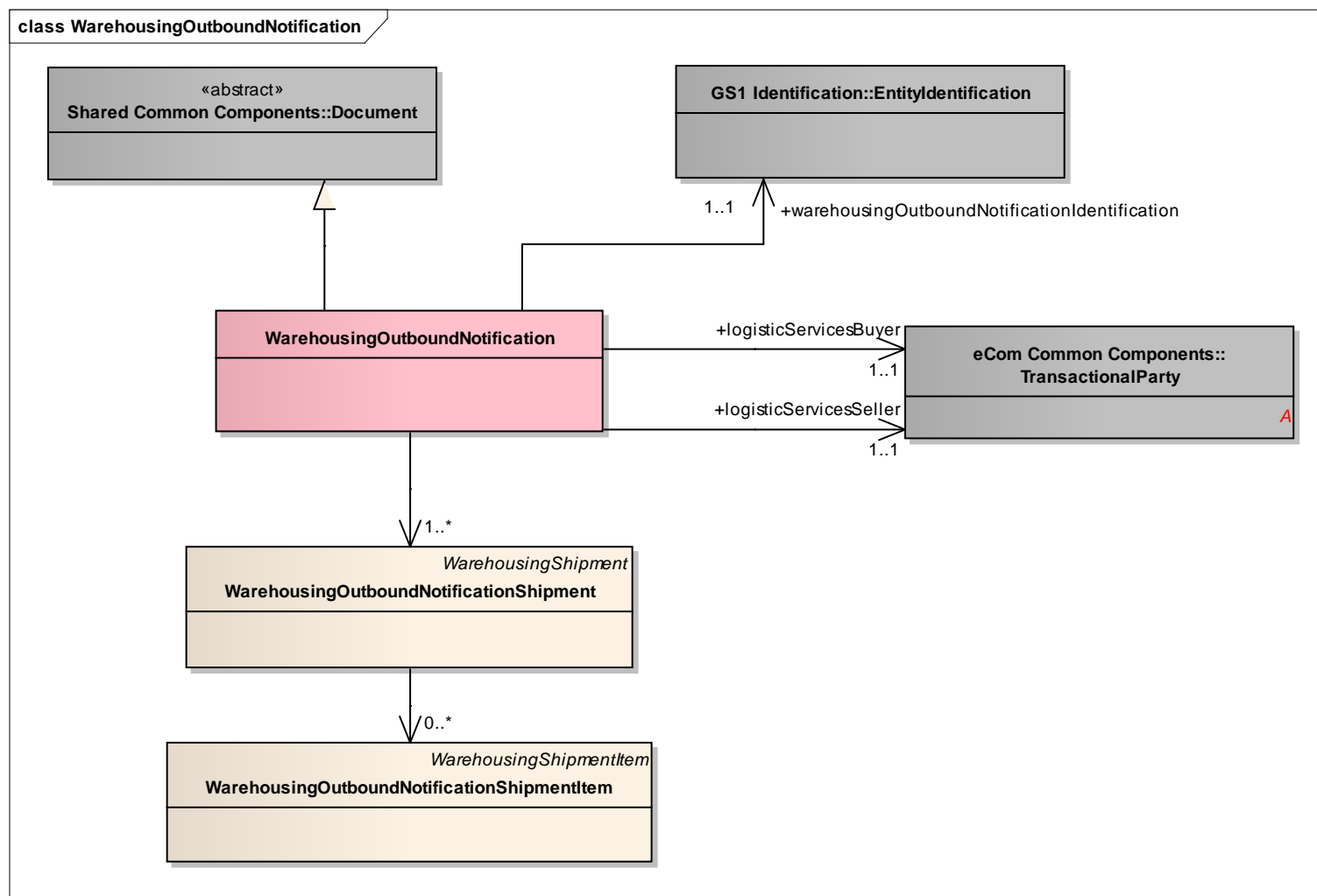
GDD Report

Content	Attribute / Role	Datatype /Secondary class	Multipli city	Definition	Requirements
WarehousingOutbound InstructionShipmentItem				A shipment item is collection of trade items and related logistic units that can each be identified (uniquely) within a shipment.	[brad-whiop:insdes-5]
Association	inboundShipmentReference	ShipmentIdentification	0..1		[brad-whiop:insdes-5.4]
Association	inlineServiceInstruction	WarehousingServiceInstruc	0..*		[brad-whiop:insdes-5.6]

Content	Attribute / Role	Datatype /Secondary class	Multipli city	Definition	Requirements
		tion			
Association	inboundLogisticUnitReferenc e	LogisticUnitIdentification	0..*		[brad-whiop:insdes-5.5]
Generalization		WarehousingShipmentItem			
Attribute	plannedDespatchQuantity	Quantity	1..1	The quantity that is ordered / planned to be despatched.	
[brad-whiop:insdes-5.1]					
Attribute	deliveryInstructionCode	WarehousingDeliveryInstru ctionCode	0..*	Code specifying special order / delivery conditions.	[brad-whiop:insdes-5.2] perhaps reuse some values of OrderInstructionCode
Attribute	crossDockIndicator	boolean	0..1		

4.4. Warehousing Outbound Notification

Class Diagram

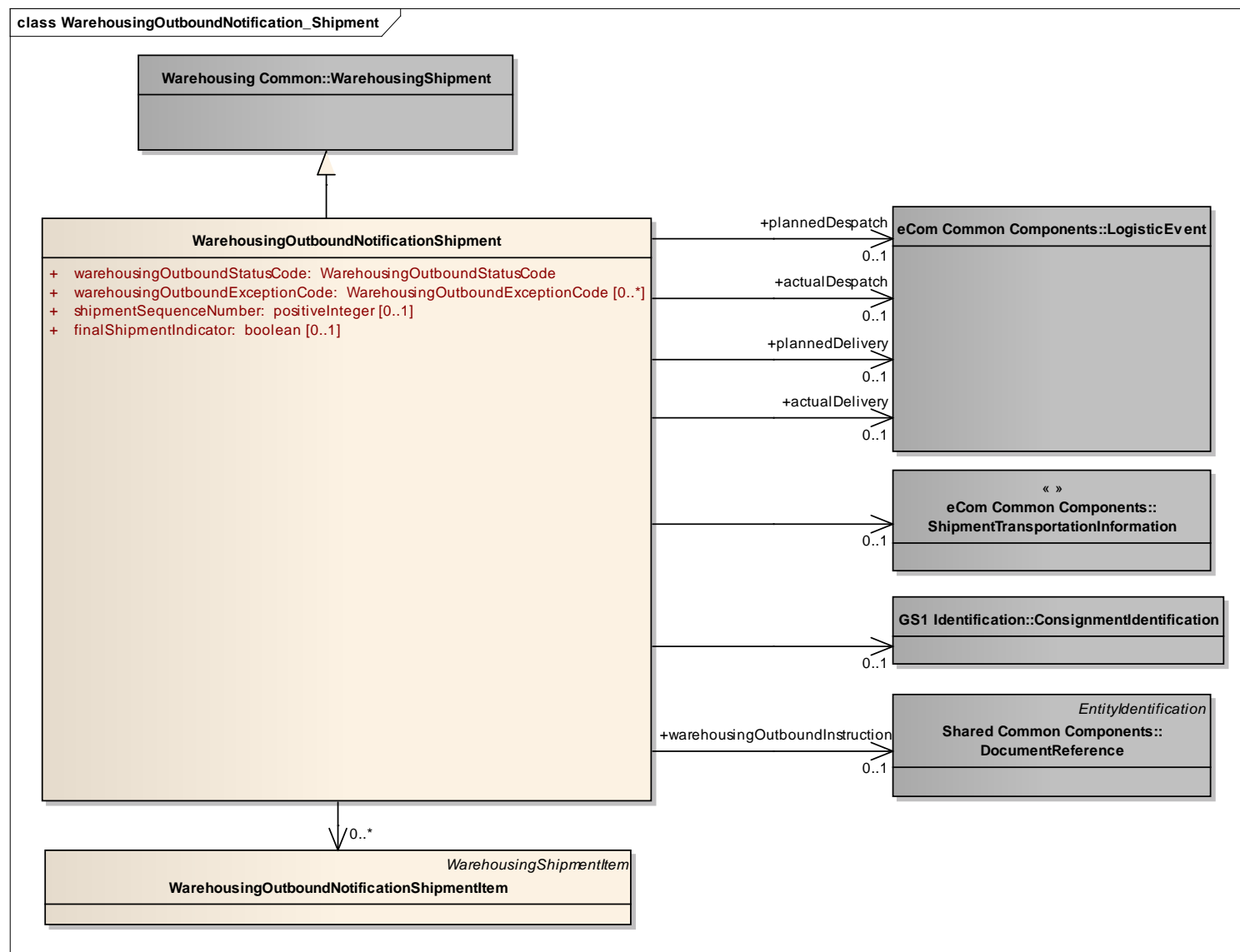


GDD Report

Content	Attribute / Role	Datatype /Secondary class	Multipli city	Definition	Requirements
WarehousingOutbound Notification					
Association		WarehousingOutboundNoti ficationShipment	1..*	Status information on the shipments that have been shipped or are expected to be shipped.	
Association	logisticServicesSeller	TransactionalParty	1..1	A party that provides logistics services to another party.	[brad-whiop:obsta-3]
Association	logisticServicesBuyer	TransactionalParty	1..1	A party that purchases logistics services from another party.	[brad-whiop:obsta-2]
Association	warehousingOutboundNotifi cationIdentification	EntityIdentification	1..1	The identification of the warehousing outbound notification document.	[brad-whiop:obsta-1]
Generalization		Document		Used to specify basic information about the content of the message including version number, creation date and time.	[brad-whiop:obsta-1]

4.5. Warehousing Outbound Notification – Shipment

Class Diagram



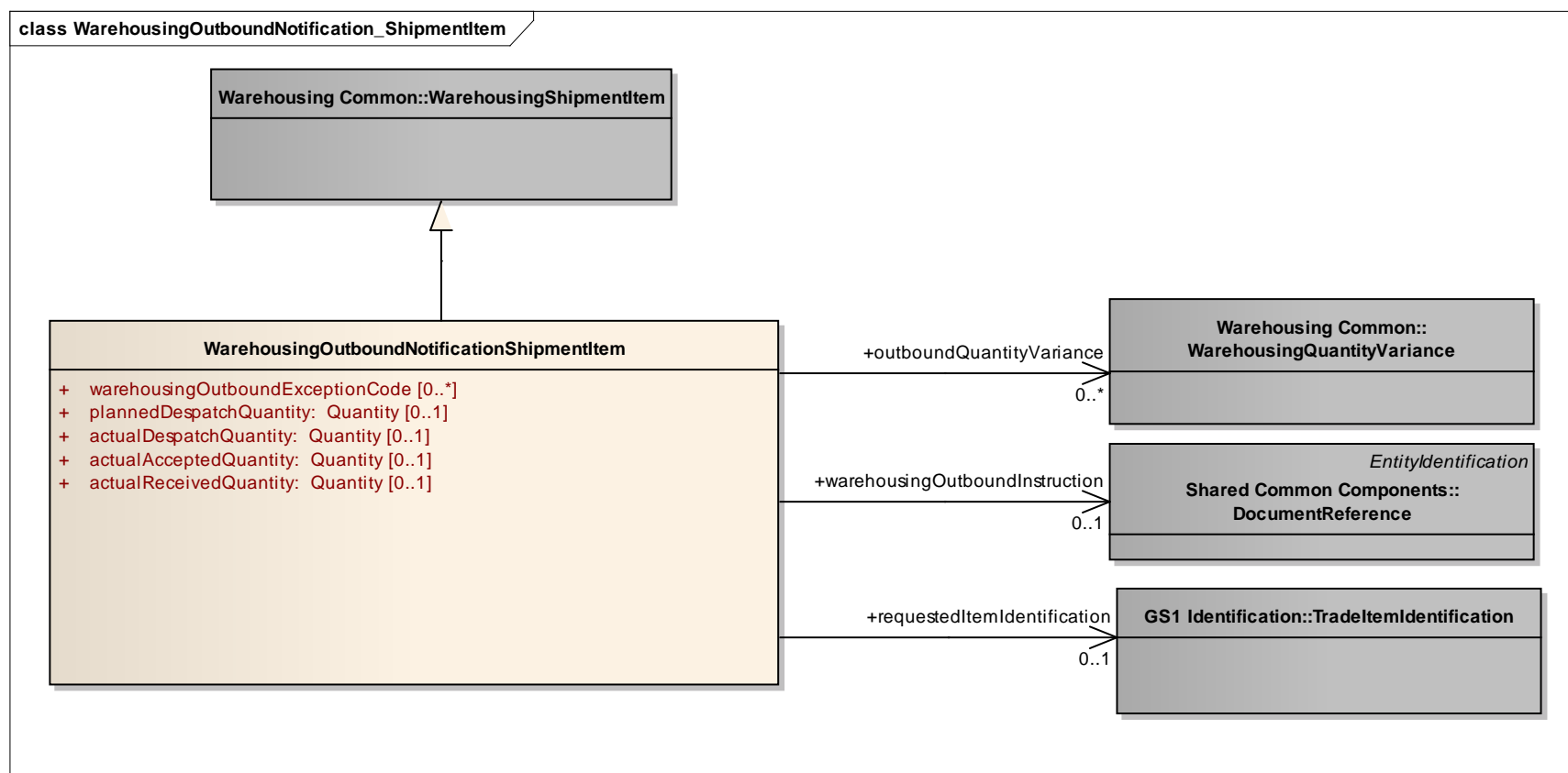
GDD Report

Content	Attribute / Role	Datatype /Secondary class	Multipli city	Definition	Requirements
WarehousingOutbound NotificationShipment				A shipment is an identifiable collection of one or more Trade Items available to be transported together from the shipper (Original Consignor/Shipper), to the receiver (Final/Ultimate Consignee).	[brad-whiop:obsta-4]
Association		WarehousingOutboundNoti ficationShipmentItem	0..*	Details on the items contained in the shipment.	
Association	plannedDespatch	LogisticEvent	0..1	Details on the date and time the goods were planned to be despatched.	[brad-whiop:obsta-4.4]
Generalization		WarehousingShipment			
Association		ConsignmentIdentification	0..1	Identification of the consignment that contains the shipment.	[brad-whiop:obsta-4.10.2]
Association		ShipmentTransportationInf ormation	0..1	Information on the way the shipment was transported.	[brad-whiop:obsta-4.10.1]
Association	actualDelivery	LogisticEvent	0..1	Details on the date and time the goods were actually delivered.	[brad-whiop:obsta-4.7]
Association	plannedDelivery	LogisticEvent	0..1	Details on the date and time the goods were planned to be delivered.	[brad-whiop:obsta-4.6]
Association	actualDespatch	LogisticEvent	0..1	Details on the date and time the goods were actually despatched.	[brad-whiop:obsta-4.5]
Association	warehousingOutboundInstru ction	DocumentReference	0..1	A reference to the related outbound instruction.	
Attribute	warehousingOutboundStatu sCode	WarehousingOutboundStat usCode	1..1	Code specifying the status of the outbound delivery.	[brad_wio:ibsta-4.2]
Attribute	warehousingOutboundExce ptionCode	WarehousingOutboundExc eptionCode	0..*	Codes specifyinganexception that occurred during the outbound process.	[brad_wio:ibsta-4.3]
Attribute	shipmentSequenceNumber	positiveInteger	0..1	A number indicating the sequence in which shipments related to the same delivery were despatched.	
Attribute	finalShipmentIndicator	boolean	0..1	Indicator specifying if a shipment, being one of	

Content	Attribute / Role	Datatype /Secondary class	Multipli city	Definition	Requirements
				multiple shipments for the same delivery, is the final shipment. See also shipmentSequenceNumber.	

4.6. Warehousing Outbound Notification – Shipment Item

Class Diagram

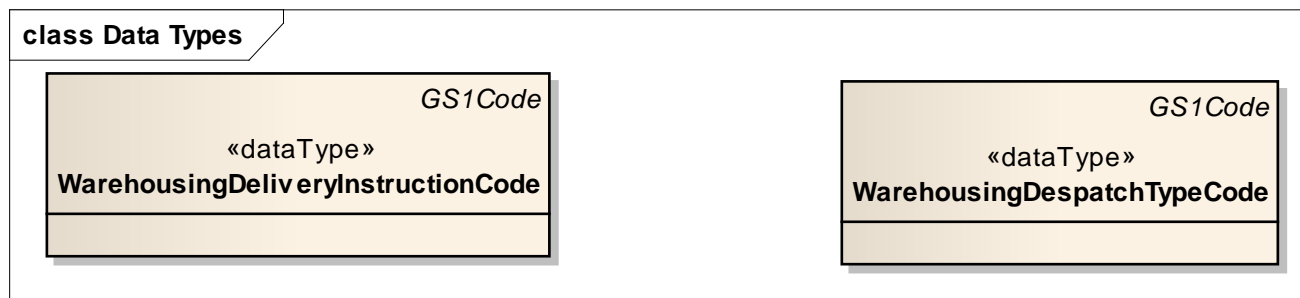


GDD Report

Content	Attribute / Role	Datatype /Secondary class	Multiplcity	Definition	Requirements
WarehousingOutboundNotificationShipmentItem				A shipment item is collection of trade items and related logistic units that can each be identified (uniquely) within a shipment.	[brad-whiop:obsta-5]
Association	warehousingOutboundInstruction	DocumentReference	0..1	A reference to the related line item in the outbound instruction.	
Association	requestedItemIdentification	TradeItemIdentification	0..1	The identification of the trade item that was requested to be delivered, but was replaced with another trade item.	
Generalization		WarehousingShipmentItem			
Association	outboundQuantityVariance	WarehousingQuantityVariance	0..*	Quantity and reason of a shortage or surplus occurring in a warehousing process.	[brad-whiop:obsta-5.7]
Attribute	warehousingOutboundExceptionCode		0..*	Codes specifying an exception that occurred during the outbound process.	[brad_wio:obsta-5.2]
Attribute	plannedDespatchQuantity	Quantity	0..1	The number of items that were planned to be despatched.	[brad_wio:obsta-5.3]
Attribute	actualDespatchQuantity	Quantity	0..1	The number of items that were despatched.	[brad_wio:obsta-5.4]
Attribute	actualAcceptedQuantity	Quantity	0..1	The number of items that were accepted by the receiver.	[brad_wio:obsta-5.5]
Attribute	actualReceivedQuantity	Quantity	0..1	The number of items that were received by the receiver.	[brad_wio:obsta-5.6]

4.7. Warehousing Outbound Instruction - Data Types

Class Diagram

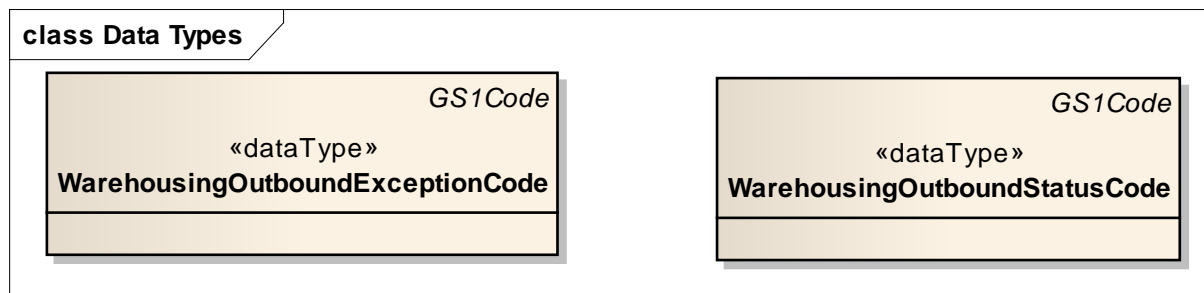


GDD Report

Content	Attribute / Role	Datatype /Secondary class	Multipli city	Definition	Requirements
WarehousingDeliveryIn structionCode					
Generalization		GS1Code			
WarehousingDespatch TypeCode					
Generalization		GS1Code			

4.8. Warehousing Outbound Notification - Data Types

Class Diagram



GDD Report

Content	Attribute / Role	Datatype /Secondary class	Multipli city	Definition	Requirements
WarehousingOutboundExceptionCode					
Generalization		GS1Code			
WarehousingOutboundStatusCode					
Generalization		GS1Code			

4.9. Enumerations (message specific)

Not applicable

4.10. External Code Lists

Codelist	Referenced in

4.10.1. Warehousing Outbound Status Code

GS1 Code List	urn:gs1:gdd:cl: WarehousingOutboundStatusCode
GS1 Code List Version	1 (March 2013)
Managing Agency	GS1
Based on Code List	Not applicable
Type Of Management	Not applicable

Code Value	Code Name	Code Definition
INSTRUCTION_RECEIVED		The outbound instruction has been received.
DELIVERY_SLOT_NEGOTIATED		A delivery slot has been negotiated with the receiver by the logistic services seller.
TRANSPORT_PLANNED		The transport has been planned by the logistic services seller
STOCK_ALLOCATED		The stock has been allocated in the warehouse management system.
PICKING_STARTED		Picking of the goods is in progress.
PRODUCT_PACKED		Product has been packed.
READY_TO_SHIP		Goods are ready for transport.
GOODS_LOADED		The goods have been loaded onto the transport means.
TRANSPORT_AUTHORIZATION_REQUIRED		Logistic services seller needs a transport authorization from the shipper.
SHIPPING_DOCUMENTATION_NEEDED		Logistic services seller needs shipping documentation from the shipper.
DESPATCH_CONFIRMED		A despatch advice has been sent to the party that will be receiving the goods.

Code Value	Code Name	Code Definition
CONFIRMATION_OF_DELIVERY		A receiving advice has been received from the party that received the goods.
PROOF_OF_DELIVERY		The official proof-of-delivery is available, for example the party receiving the goods has signed-off the waybill.
STOCK_ALLOCATION_UNSUCCESSFUL		It has been impossible to allocate stock in the warehouse management system.
PICKING_UNSUCCESSFUL		Picking of the goods has failed.

4.10.2. Warehousing Outbound Exception Code

GS1 Code List	urn:gs1:gdd:cl: WarehousingOutboundExceptionCode
GS1 Code List Version	1 (March 2013)
Managing Agency	GS1
Based on Code List	Not applicable
Type Of Management	Not applicable

Code Value	Code Name	Code Definition
SHIPMENT_REFUSED_BY_RECEIVER		An attempt was made to deliver the goods but the shipment was not accepted.
DELIVERY_DELAY_EXPECTED		The goods are expected to be delivered later than instructed.
LATE_DELIVERY		The goods have been delivered later than instructed
DELIVERY_SLOT_MISSED		Goods have been delivered outside of the instructed delivery slot.
DELIVERY_SPLIT		The instructed delivery has been split into multiple shipments during.
SHIPMENT_SPLIT		The shipment has been split during transport.
CANCELLED		The outbound instruction has been cancelled by the logistic services buyer.
UNKNOWN_ITEM_ID		The item ID in the instruction is not known.
INSUFFICIENT_STOCK		Insufficient stock of a particular product.
INSUFFICIENT_STOCK_FOR_BATCH		Insufficient stock of a product from a particular batch or lot.
QUANTITY_ROUNDED		Delivery quantity has been adjusted for rounding reasons, for example to case level.
PRODUCT_DAMAGED_DURING_OUTBOUND		The product has been damaged during the outbound process and can no longer be delivered.
PRODUCT_REFUSED		An attempt was made to deliver the product but the item was not accepted.

Code Value	Code Name	Code Definition
ITEM_CANCELLED		The item has been cancelled by the logistic services buyer.

4.10.3. Warehousing Delivery Instruction Code

GS1 Code List	urn:gs1:gdd:cl:WarehousingDeliveryInstructionCode
GS1 Code List Version	1 (March 2013)
Managing Agency	GS1
Based on Code List	Not applicable
Type Of Management	Not applicable

Code Value	Code Name	Code Definition
PRIORITY_DESPATCH		The instructed delivery is of high priority.
REPAIR_DESPATCH		Instructed delivery is to a party that will repair the items, goods are expected to return after repair.
DESTRUCTION_DESPATCH		Instructed delivery is to a party that will destroy the items.
PRODUCTION_LINE_DESPATCH		Instructed delivery is directly to a production line.
COMPLETE_DELIVERY_ONLY		Splitting of the instructed delivery is not allowed. If used at the <u>header</u> level then the entire delivery must be delivered in one go. If used at the <u>item</u> level then the delivery may be partially shipped but the item mentioned must delivered all at once.

4.10.4. WarehousingDespatchTypeCode

GS1 Code List	urn:gs1:gdd:cl: WarehousingDespatchTypeCode
GS1 Code List Version	1 (March 2013)
Managing Agency	GS1
Based on Code List	Not applicable
Type Of Management	Not applicable

Code Value	Code Name	Code Definition
WAREHOUSE_SHIPMENT		All goods are picked from stock.
CROSS-DOCKED_SHIPMENT		One on one cross-dock of an incoming cross-dock shipment.

Code Value	Code Name	Code Definition
WAREHOUSE_CROSS- DOCK_COMBINATION		Combination of goods picked from stock and goods taken from cross-docked receipts.

5. Business Message Examples

5.1. Warehousing Outbound Instruction

Element	Value
WarehousingOutboundInstruction	creationDateTime: 2012-07-17T12:15:00 documentStatusCode: ORIGINAL documentActionCode: ADD
EntityIdentification (+warehousingOutboundInstructionIdentification)	entityIdentification: INSDES00123
TransactionalParty (+logisticServicesSeller)	gln: 3333333000001
TransactionalParty (+logisticServicesBuyer)	gln: 2222222000004
WarehousingOutboundInstructionShipment (+)	warehousingDespatchTypeCode: WAREHOUSE_SHIPMENT
TransactionalParty (+receiver)	gln: 4444444000008
TransactionalParty (+shipper)	gln: 3333333000018
ShipmentTransportationInformation (+)	transportServiceCategoryType: 30 transportServiceLevelCode: STANDARD_SERVICE
LogisticEvent (+plannedDelivery)	
- DateTimeRange (+logisticEventPeriod)	beginDate: 2012-07-18 beginTime: 15:00:00 endDate: 2012-07-18 endTime: 16:00:00
WarehousingOutboundInstructionShipment Item	lineItemNumber: 1 plannedDespatchQuantity: 30
TransactionalTradeItem (+)	gtin: 01111111000120
WarehousingServiceInstruction (+inlineServiceInstruction)	warehousingServiceConditionCode: BUILD_PALLET
WarehousingServiceAttribute (+)	warehousingServiceAttributeTypeCode: PALLET_HEIGHT warehousingServiceAttributeMeasurement: 180 cm

5.2. Warehousing Outbound Notification

Element	Value
WarehousingOutboundNotification	creationDateTime: 2012-07-18T12:15:00 documentStatusCode: ORIGINAL documentActionCode: ADD

Element	Value
EntityIdentification (+warehousingOutboundNotificationIdentification)	entityIdentification: OBSTA00113
TransactionalParty (+logisticServicesSeller)	gln: 3333333000001
TransactionalParty (+logisticServicesBuyer)	gln: 2222222000004
WarehousingOutboundNotificationShipment	warehousingOutboundStatusCode READY_TO_SHIP
TransactionalParty (+receiver)	gln: 4444444000008
TransactionalParty (+shipper)	gln: 3333333000018
ShipmentIdentification (+)	gsin: 33333330000114050
WarehousingOutboundNotificationShipmentItem	lineItemNumber: 1 warehousingOutboundExceptionCode: QUANTITY_ROUNDED plannedDespatchQuantity: 30 actualDespatchQuantity: 32
TransactionalTradeItem (+)	gtin: 01111111000120
WarehousingQuantityVariance (+outboundQuantityVariance)	varianceQuantity: 2 warehousingQuantityVarianceCode: QUANTITY_OVER
LogisticUnit	tradeItemQuantity: 16
- LogisticUnitIdentification (+)	sscc: 133333330000003450
LogisticUnit	tradeItemQuantity: 16
- LogisticUnitIdentification (+)	sscc: 133333330000003450

5.3. Warehousing Outbound Instruction (complex example)

Logistic Services Buyer 2222222 instructs his Logistic Services Seller (3333333, the warehouse service provider) that goods need to be shipped and transported as follows:

- By a LSB designated carrier (5555555) to an LSB designated freight forwarder (6666666).
- Freight forwarder (6666666) will transport the goods overseas to a de-consolidation centre (4444444001104) controlled by the customer (4444444).
- From there the customer will arrange transport to the final customer location (4444444002224).

Element	Value	Comment
WarehousingOutboundInstruction	creationDateTime: 2012-07-17T12:15:00 documentStatusCode: ORIGINAL documentActionCode: ADD	
EntityIdentification (+warehousingOutboundInstructionIdentification)	entityIdentification: INSDES00123	

Element	Value	Comment
TransactionalParty (+logisticServicesSeller)	gln: 3333333000001	The LS SELLER has a single central GLN to identify the single Integration Services Point of Contact for that LSS.
TransactionalParty (+logisticServicesBuyer)	gln: 2222222000004	The LS BUYER has a single central GLN to identify the single Integration Services Point of Contact for that LSB.
WarehousingOutboundInstructionShipment (+)	warehousingDespatchType Code: WAREHOUSE_SHIPMENT	
TransactionalParty (+receiver)	gln: 4444444000008	Identifies one of multiple entities within the Customers (Material Buyer) organisation.
TransactionalParty (+shipper)	gln: 3333333000018	Identifies the warehouse from which the LSS is expected to despatch the Order. The LS SELLER may operate many different warehousing sites even multiple different sites for the same LS BUYER. The GLN used to identify the sites are the GLN assigned and owned by the LS SELLER.
TransactionalParty (+shipTo)	gln: 4444444001104	Identifies the facility (de-consolidation centre) where the Customer wants to get the Order delivered to by the forwarder. This GLN is assigned by the Customer who may operate many different facilities each of which (may be) identified with a GLN. The Customer should then also clearly identify/include this GLN in the Order placed on the Material Supplier (the LS BUYER).
TransactionalParty (+ultimateConsignee)	gln: 4444444002224	Identifies the final delivery location for the Order. This GLN is assigned by the Customer (who is ultimately responsible for the delivery to this point). Clearly the Customer should include the appropriate GLN for the ultimateConsignee in the original Order placed on the Material Supplier (the LS BUYER).
ShipmentTransportationInformation		
ShipmentTransportationInformation (+)	transportServiceCategoryType: 30 transportServiceLevelCode: STANDARD_SERVICE	
TransactionalParty (+carrier)	gln: 5555555000005	Identifies the specific entity within the Carriers organisation that will be responsible for the physical movement of the Order from the warehouse
TransactionalParty (+freightForwarder)	gln: 6666666000002	Identifies the location of the freight forwarder where the goods need to be dropped-off.
LogisticEvent (+plannedDelivery)		
- DateOptionalTime	date: 2012-07-25	

Element	Value	Comment
(+logisticEventDateTime)		
WarehousingOutboundInstructionShipmentItem	lineItemNumber: 1 plannedDespatchQuantity: 30	
TransactionalTradeItem (+)	gtin: 01111111000120	

6. Implementation Considerations

(Insert Content Here)

7. Appendices

(Insert Content Here)

8. Summary of Changes

8.1. BMS Release 3.1

First release