



Transport Pick up Drop off Request and Confirmation

Business Message Standard (BMS)

Release 3.2

01-Dec-2014, Issue 1



Document Summary

| Document Item | Current Value |
|----------------------|---|
| Document Title | Business Message Standard (BMS) - Transport Pick up Drop off Request and Confirmation |
| BMS Release | 3.2 |
| Document Version | Issue 1, 01-Dec-2014 |
| Work Group Name | eCom SMG |
| BMS Template Version | 2.4 |

Work Request Reference

| Date of WR Submission to GSMP: | WR Submitter(s): | Refer to Work Request (WR) Number(s): |
|--------------------------------|-------------------|---------------------------------------|
| 02-Jul-2012 | GS1 Germany | 12-000195 |
| 25-Jun-2014 | GS1 Global Office | 14-000110 |

Business Requirements Document (BRAD) Reference

| BRAD Title | BRAD Issue Date | BRAD Version |
|----------------------|-----------------|--------------|
| Transport Management | | 1.0 |
| | | |

Document Change History

| Date of Change | Version | Changed By | Reason for Change | Summary of Change |
|----------------|-------------------|-----------------|-------------------|------------------------|
| 12-Jan-2012 | BMS 3.0 – Issue 1 | Mark Van Eeghem | BMS Release 3.0 | See summary of changes |
| 01-May-2013 | BMS 3.1 – Issue 1 | Coen Janssen | BMS Release 3.1 | See summary of changes |
| 15-Sep-2014 | BMS 3.2 – Issue 1 | Ewa Iwicka | BMS Release 3.2 | See summary of changes |

Disclaimer

WHILST EVERY EFFORT HAS BEEN MADE TO ENSURE THAT THE GUIDELINES TO USE THE GS1 STANDARDS CONTAINED IN THE DOCUMENT ARE CORRECT, GS1 AND ANY OTHER PARTY INVOLVED IN THE CREATION OF THE DOCUMENT HEREBY STATE THAT THE DOCUMENT IS PROVIDED WITHOUT WARRANTY, EITHER EXPRESSED OR IMPLIED, REGARDING ANY MATTER, INCLUDING BUT NOT LIMITED TO THE OF ACCURACY, MERCHANTABILITY OR FITNESS FOR A PARTICULAR PURPOSE, AND HEREBY DISCLAIM ANY AND ALL LIABILITY, DIRECT OR INDIRECT, FOR ANY DAMAGES OR LOSS RELATING TO OR RESULTING FROM THE USE OF THE DOCUMENT. THE DOCUMENT MAY BE MODIFIED, SUBJECT TO DEVELOPMENTS IN TECHNOLOGY, CHANGES TO THE STANDARDS, OR NEW LEGAL REQUIREMENTS. SEVERAL PRODUCTS AND COMPANY NAMES MENTIONED HEREIN MAY BE TRADEMARKS AND/OR REGISTERED TRADEMARKS OF THEIR RESPECTIVE COMPANIES. GS1 IS A REGISTERED TRADEMARK OF GS1 AISBL.

Table of Contents

| | | |
|-----------|--|-----------|
| 1. | Business Domain View | 4 |
| 1.1. | Introduction..... | 4 |
| 1.2. | References | 4 |
| 2. | Business Context | 4 |
| 3. | Business Transaction View | 5 |
| 3.1. | Business Transaction – Request Transport Pick-up / Drop-off..... | 5 |
| 3.2. | Confirm Transport Pick-up / Drop-off | 6 |
| 4. | Business Information View | 8 |
| 4.1. | Transport Pick Up Drop Off Request (message) | 8 |
| 4.2. | Transport Pick Up Drop Off Confirmation (message) | 11 |
| 4.3. | Transport Pick Up Drop Off Consignment | 14 |
| 4.4. | Transport Pick Up Drop Off Shipment | 16 |
| 4.5. | Code Lists | 18 |
| 5. | Business Message Examples | 18 |
| 5.1. | Example 1 | 18 |
| 5.2. | Example 2 | 20 |
| 6. | Implementation Considerations | 21 |
| 6.1. | User Guide | 21 |
| 6.2. | Message Specific Considerations | 21 |
| 7. | Summary of Changes..... | 21 |
| 7.1. | BMS Release 3.0 | 21 |
| 7.2. | BMS Release 3.1 | 21 |
| 7.3. | BMS Release 3.2 | 22 |
| 8. | Appendices | 23 |
| 9. | Acknowledgements | 23 |
| 9.1.1. | Work Group | 23 |
| 9.1.2. | Development Team Members | 23 |

1. Business Domain View

1.1. Introduction

Message Definition

Transport Pick-up/Drop-off Request Message Definition

Transport Pick-up message enables the request for an appointment to collect goods at a pick-up location or to deliver goods at a drop-off location.

Transport Pick-up/Drop-off Confirmation Message Definition

This business message enables the confirmation for an appointment to collect goods at a pick-up location or to deliver goods at a drop-off location.

Principles

Initial information about the collection and delivery of goods may already have been exchanged in the transport instruction. However, the party where the goods are collected (consignor / pick-up location / shipper / ship-from location) or delivered (consignee / drop-off location / receiver / ship-to location) will not in all cases be aware of the transport instruction details or they might have changed.

In the pick-up / drop-off request the carrier can specify delays or other relevant status information that might impact the time of collection or the time of delivery.

In the pick-up / drop-off confirmation besides the detailed time and location (dock door) additional handling instructions might be included.

1.2. References

| Reference Name |
|--|
| BRAD Transport Management (GS1, 2009) |
| Logistics Interoperability Model (GS1, 2007) |
| BMS eCom Common Library 3.2 (GS1, 2014) |
| BMS Shared Common Library 3.2 (GS1, 2014) |

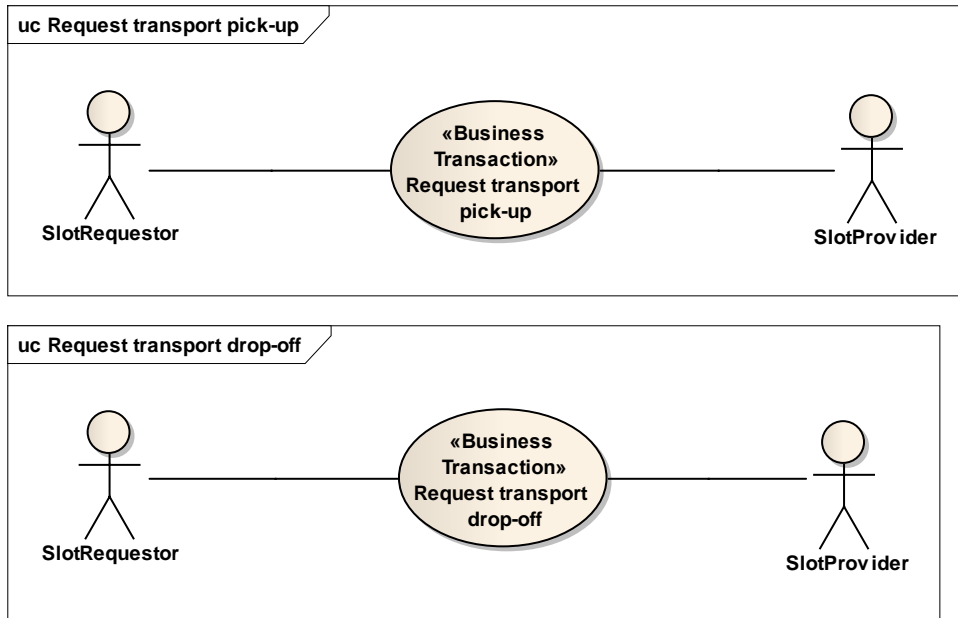
2. Business Context

| Context Category | Value(s) |
|----------------------|--------------------------------|
| Industry | All |
| Geopolitical | All |
| Product | All |
| Process | Deliver / Transport Management |
| System Capabilities | GS1 System |
| Official Constraints | None |

3. Business Transaction View

3.1. Business Transaction – Request Transport Pick-up / Drop-off

Use Case Diagram



Use Case Description

| Use Case ID | UC-1 |
|-----------------------------|---|
| Use Case Name | Request Transport Pick-up / Drop-off |
| Use Case Description | To request a slot (detailed time and location) for the collection or delivery of goods. |
| Actors (Goal) | Slot Requestor (logistic service provider) Slot Provider (customer, supplier, consolidation centre, ...) |
| Performance Goals | Not applicable |
| Preconditions | The provider is aware that a shipment / consignment will need to be collected or delivered, based on previous information exchanges. The requestor is aware of the planned execution details for the transport, for example based on information exchanged in the transport instruction. |
| Post conditions | The slot provider has received the request. |

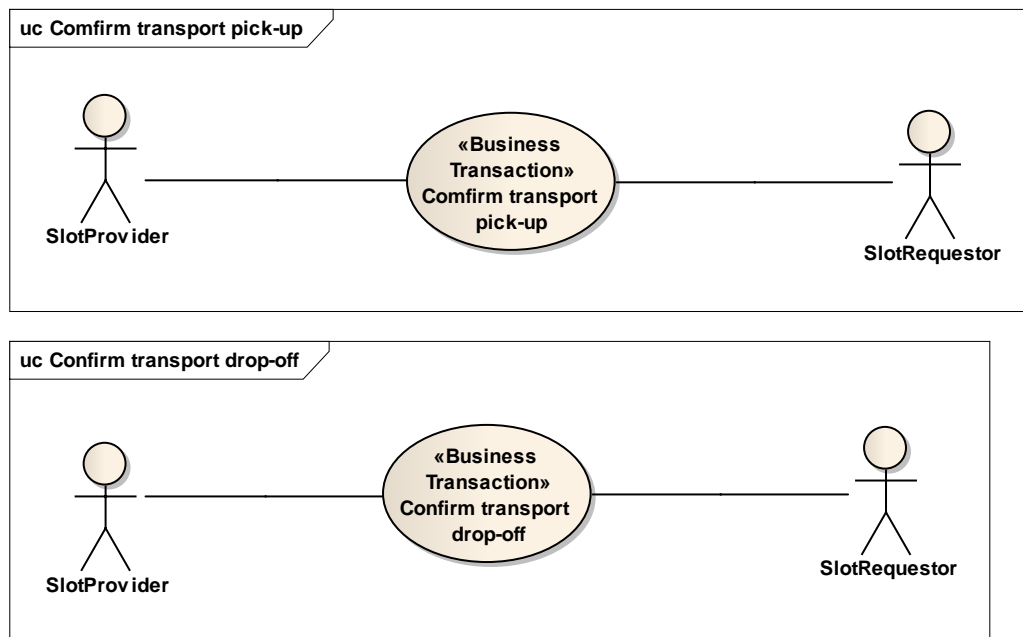
| | | | |
|----------------------|---|-----------|---|
| | | | |
| Scenario | Begins when the slot requestor determines a specific appointment is required. | | |
| | Continues with... | | |
| | Step # | Actor | Activity Step |
| | 1 | Requestor | Issues the transport pick-up drop-off request |
| | 2 | Provider | Receives the transport pick-up drop-off request |
| | Ends when | | |
| Alternative Scenario | Not applicable | | |
| Related Requirements | Not applicable | | |
| Related Rules | Not applicable | | |

Activity Diagram(s)

Not applicable

3.2. Confirm Transport Pick-up / Drop-off

Use Case Diagram



Use Case Description

| | |
|-----------------------------|---|
| Use Case ID | UC-2 |
| Use Case Name | Confirm Transport Pick-up / Drop-off |
| Use Case Description | To confirm the assignment of a slot (detailed time and location) for the collection or delivery of goods. |

| Actors (Goal) | Slot Requestor (logistic service provider) Slot Provider (customer, supplier, consolidation centre, ...) | | | | | | | | | | | | |
|----------------------|--|------------------------------------|-------|---------------|---|----------|------------------------------------|---|----------|------------------------|---|-----------|---------------------------|
| Performance Goals | Not applicable | | | | | | | | | | | | |
| Preconditions | The provider is aware that a shipment / consignment will need to be collected or delivered, based on previous information exchanges. Optional: the provider may have received a Transport Pick-up Drop-off Request | | | | | | | | | | | | |
| Post conditions | | | | | | | | | | | | | |
| Scenario | Begins when the provider receives the transport pic-up drop-off request Continues with... <table><tr><th>Step #</th><th>Actor</th><th>Activity Step</th></tr><tr><td>1</td><td>provider</td><td>Assigns a slot (time and location)</td></tr><tr><td>2</td><td>provider</td><td>Sends the confirmation</td></tr><tr><td>3</td><td>requestor</td><td>Receives the confirmation</td></tr></table> Ends when | Step # | Actor | Activity Step | 1 | provider | Assigns a slot (time and location) | 2 | provider | Sends the confirmation | 3 | requestor | Receives the confirmation |
| Step # | Actor | Activity Step | | | | | | | | | | | |
| 1 | provider | Assigns a slot (time and location) | | | | | | | | | | | |
| 2 | provider | Sends the confirmation | | | | | | | | | | | |
| 3 | requestor | Receives the confirmation | | | | | | | | | | | |
| Alternative Scenario | Begins when the provider determines an update on the pick-up or drop-off slot is required. Continues with... <table><tr><th>Step #</th><th>Actor</th><th>Activity Step</th></tr><tr><td>1</td><td>provider</td><td>Assigns a slot (time and location)</td></tr><tr><td>2</td><td>provider</td><td>Sends the confirmation</td></tr><tr><td>3</td><td>requestor</td><td>Receives the confirmation</td></tr></table> | Step # | Actor | Activity Step | 1 | provider | Assigns a slot (time and location) | 2 | provider | Sends the confirmation | 3 | requestor | Receives the confirmation |
| Step # | Actor | Activity Step | | | | | | | | | | | |
| 1 | provider | Assigns a slot (time and location) | | | | | | | | | | | |
| 2 | provider | Sends the confirmation | | | | | | | | | | | |
| 3 | requestor | Receives the confirmation | | | | | | | | | | | |
| Related Requirements | Not applicable | | | | | | | | | | | | |
| Related Rules | Not applicable | | | | | | | | | | | | |

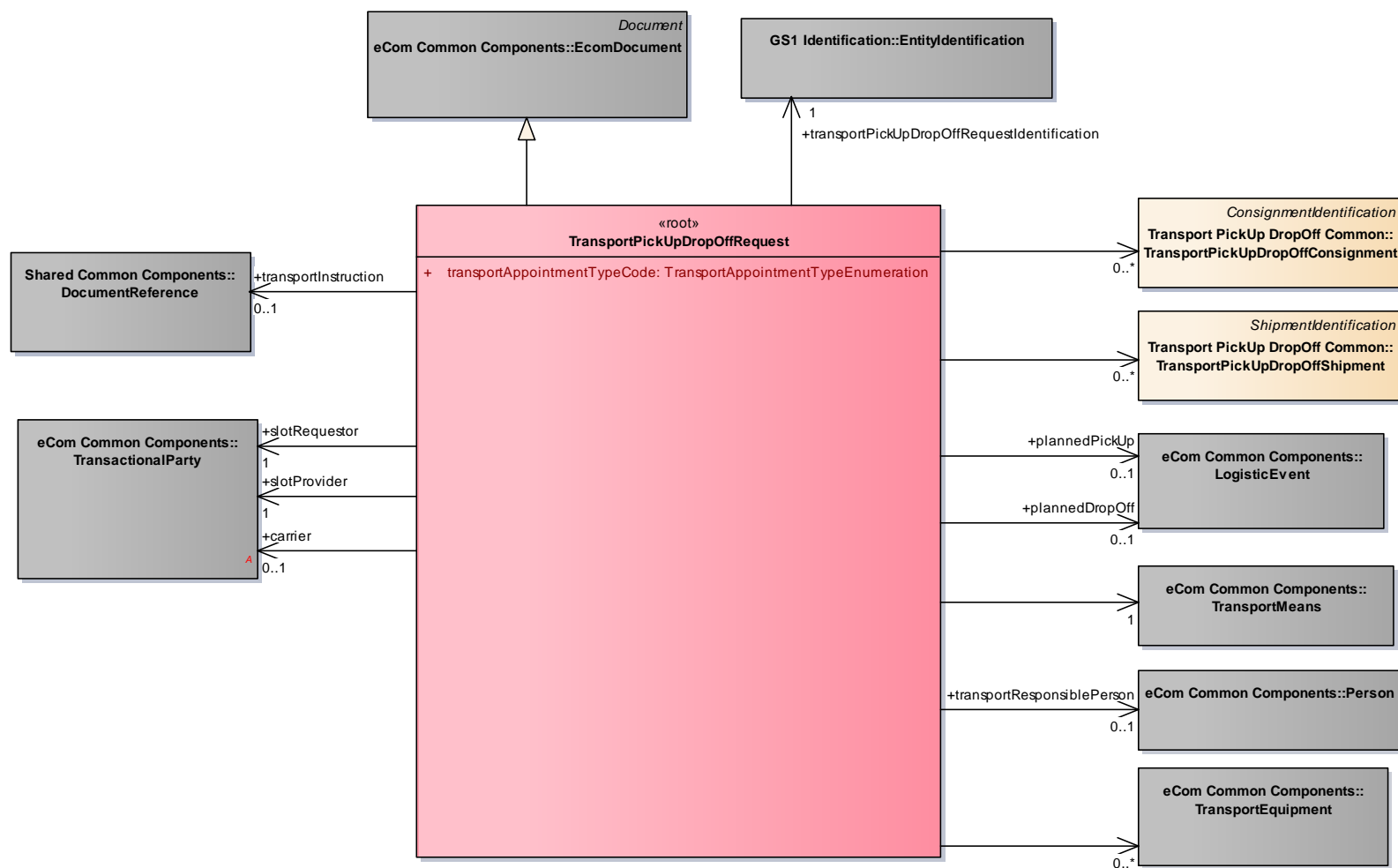
Activity Diagram(s)

Not applicable

4. Business Information View

4.1. Transport Pick Up Drop Off Request (message)

Class Diagram



GDD Report

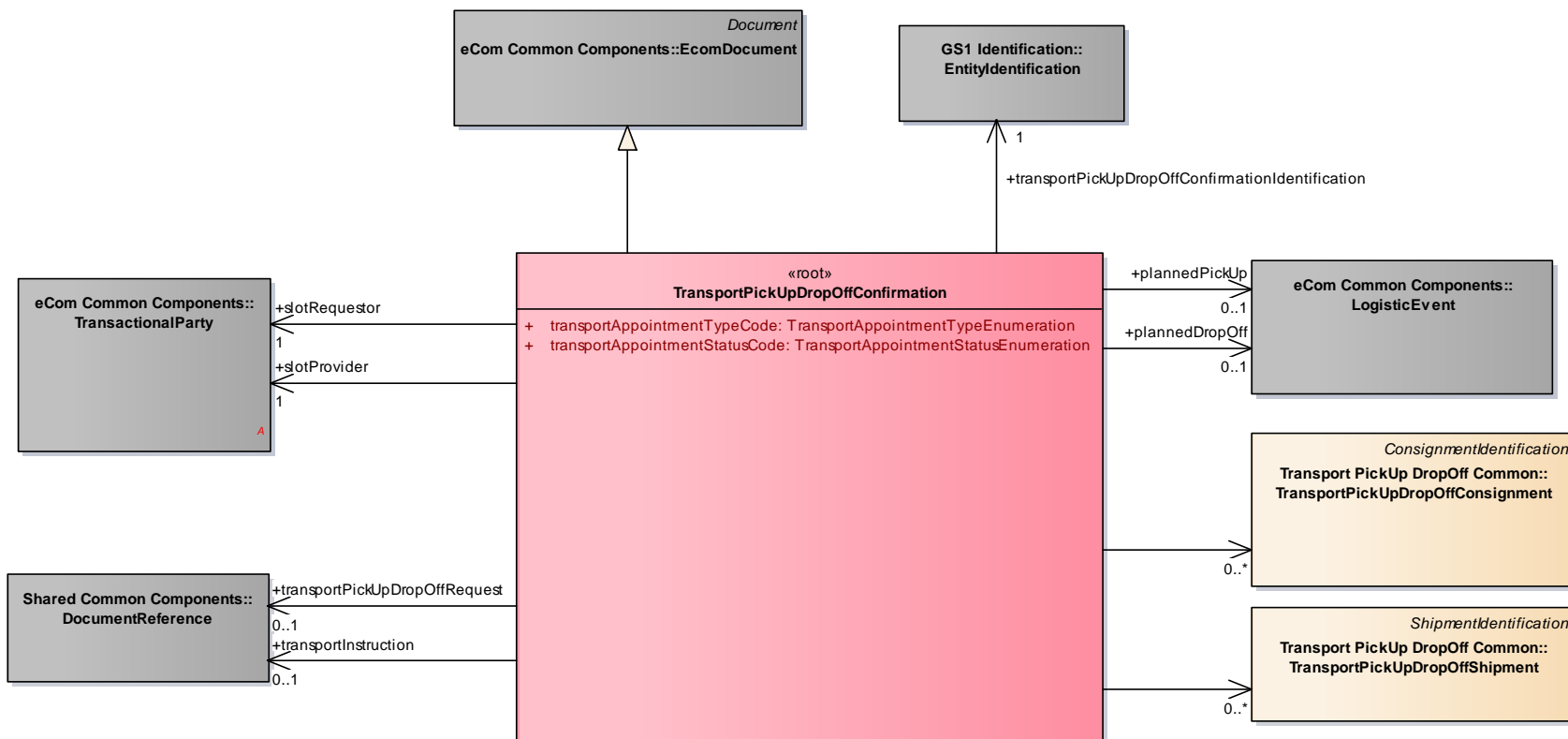
The content of the TransportPickUpDropOffRequest class, its structure and component definitions can be accessed in the Global Data Dictionary: http://apps.gs1.org/GDD/bms/Version3_2/Pages/bieDetails.aspx?semanticURN=urn:gs1:gdd:bie:TransportPickUpDropOffRequest

| Content | Attribute / Role | Datatype /Secondary class | Multiplicity | Definition | Requirements |
|-------------------------------|----------------------|-----------------------------------|--------------|--|---|
| TransportPickUpDropOffRequest | | | | This business message standard enables the request for an appointment to collect goods at a pick-up location or to deliver goods at a drop-off location. | |
| Association | slotRequestor | TransactionalParty | 1..1 | The party that requests a pick-up or drop-off slot from another party. | BRAD TM - new requirement |
| Association | plannedPickUp | LogisticEvent | 0..1 | Details on the planned time and location the goods will be collected. | |
| Association | carrier | TransactionalParty | 0..1 | The party that will collect, transport and deliver the goods. | BRAD TM - TransportPUDORRequest-4 |
| Association | slotProvider | TransactionalParty | 1..1 | The party that provides a pick-up or drop-off slot to another party. | BRAD TM - new requirement |
| Association | | TransportPickUpDropOffShipment | 0..* | Details of the shipment that will be collected or delivered. | |
| Generalization | | EcomDocument | | Basic information about the content of the message including version number, creation date and time. | BRAD TM - TransportPUDORRequest-2 |
| Association | plannedDropOff | LogisticEvent | 0..1 | Details on the planned time and location the goods will be delivered. | |
| Association | transportInstruction | DocumentReference | 0..1 | Reference to the transport instruction document related to this request. | BRAD TM - TransportPUDORRequest-3 |
| Association | | TransportPickUpDropOffConsignment | 0..* | Details on the consignment that will be collected or delivered. | |
| Association | | TransportEquipment | 0..* | Details on the transport equipment used for the transport. | BRADTransportManagement -newrequirement |

| Content | Attribute / Role | Datatype /Secondary class | Multiplicity | Definition | Requirements |
|-------------|---|------------------------------|--------------|---|-----------------------------------|
| Association | transportResponsiblePerson | Person | 0..1 | The person responsible for the execution of this pick-up or drop-off, for example the driver. | BRAD TM - TransportPUDORRequest-4 |
| Association | | TransportMeans | 1..1 | Details on the transport means used for the transport. | BRAD TM - TransportPUDORRequest-6 |
| Association | transportPickUpDropOffRequestIdentification | EntityIdentification | 1..1 | The identification of the Transport Pick-up Drop-off Request document. | BRAD TM - TransportPUDORRequest-1 |
| Attribute | transportAppointmentTypeCode | TransportAppointmentTypeEnum | 1..1 | Code specifying whether the request relates to a pick-up or drop-off. | |

4.2. Transport Pick Up Drop Off Confirmation (message)

Class Diagram



GDD Report

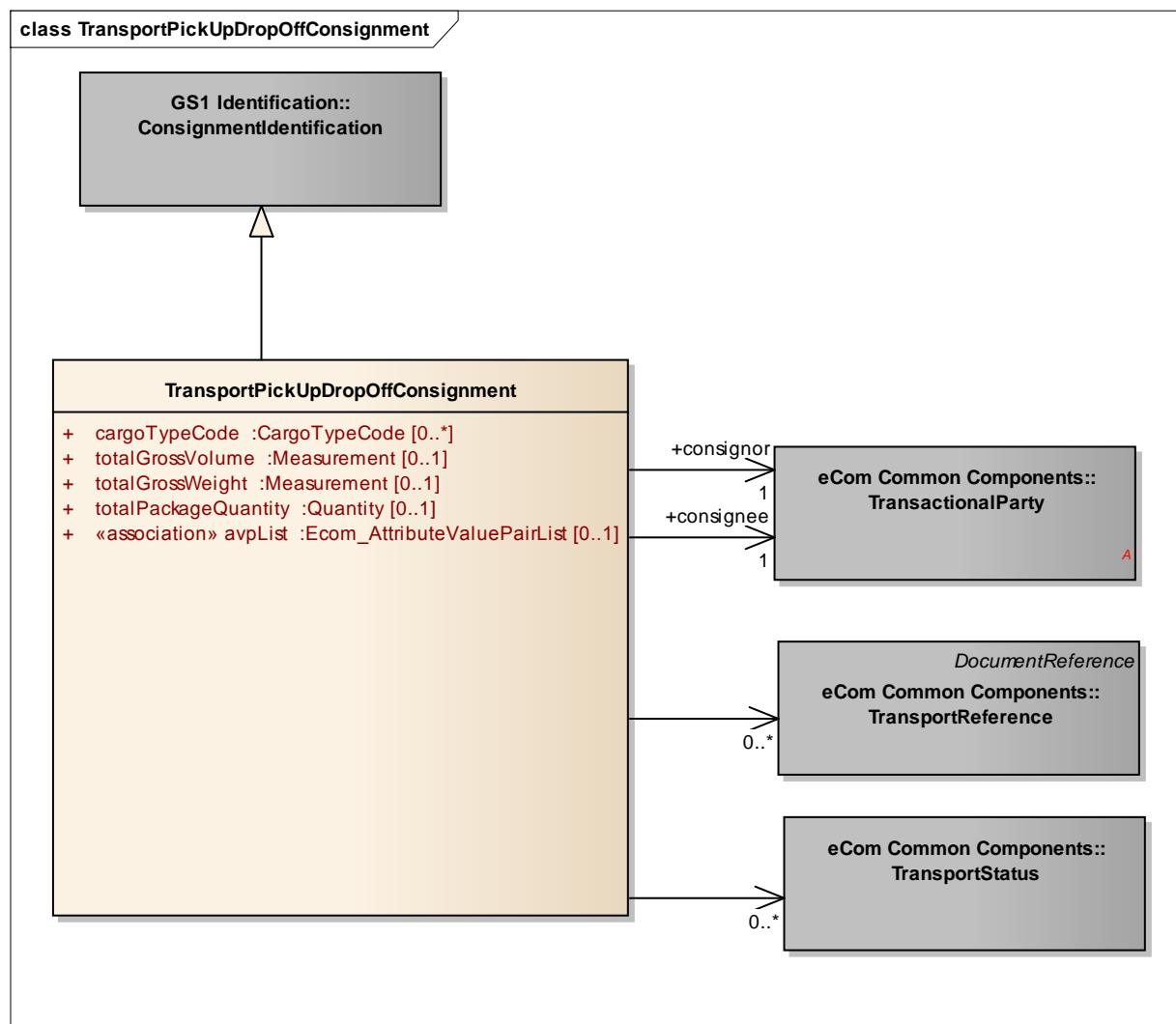
The content of the TransportPickUpDropOffConfirmation class, its structure and component definitions can be accessed in the Global Data Dictionary: http://apps.gs1.org/GDD/bms/Version3_2/Pages/bieDetails.aspx?semanticURN=urn:gs1:gdd:bie:TransportPickUpDropOffConfirmation

| Content | Attribute / Role | Datatype /Secondary class | Multiplicity | Definition | Requirements |
|------------------------------------|--|--------------------------------|--------------|--|---|
| TransportPickUpDropOffConfirmation | | | | This business message standard enables the confirmation of an appointment to collect goods at a pick-up location or to deliver goods at a drop-off location. | |
| Association | plannedDropOff | LogisticEvent | 0..1 | Details on the planned time and location the goods will be delivered. | BRAD TM - TransportPUDOCconfirmation-6 |
| Association | transportPickUpDropOffConfirmationIdentification | EntityIdentification | 1..1 | The identification of the Transport Pick-up Drop-off Request document. | BRAD TM - TransportPUDOCconfirmation-1 |
| Generalization | | EcomDocument | | Basic information about the content of the message including version number, creation date and time. | BRAD TM - TransportPUDOCconfirmation-2 |
| Association | transportInstruction | DocumentReference | 0..1 | Reference to the Transport Instruction document related to this confirmation. | BRAD TM - TransportPUDOCconfirmation-4 |
| Association | slotProvider | TransactionalParty | 1..1 | The party that provides a pick-up or drop-off slot to another party. | BRAD TM - TransportPUDOCconfirmation- new |
| Association | | TransportPickUpDropOffShipment | 0..* | Details on the shipment that will be collected or delivered. | BRAD TM - TransportPUDOCconfirmation-7 |
| Association | plannedPickUp | LogisticEvent | 0..1 | Details on the planned time and location the goods will be collected. | BRAD TM - TransportPUDOCconfirmation-6 |
| Association | transportPickUpDropOffRequest | DocumentReference | 0..1 | Reference to the Transport Pick-up Drop-off Request document related to this request. | BRAD TM - TransportPUDOCconfirmation-3 |

| Content | Attribute / Role | Datatype /Secondary class | Multiplicity | Definition | Requirements |
|-------------|--------------------------------|---------------------------------------|--------------|---|---|
| Association | | TransportPickUpDropOffConsignment | 0..* | Details on the consignment that will be collected or delivered. | BRAD TM - TransportPUDOCconfirmation-7 |
| Association | slotRequestor | TransactionalParty | 1..1 | The party that requests a pick-up or drop-off slot from another party. | BRAD TM - TransportPUDOCconfirmation- new |
| Attribute | transportAppointmentTypeCode | TransportAppointmentTypeEnum | 1..1 | Code specifying whether the request relates to a pick-up or drop-off. | |
| Attribute | transportAppointmentStatusCode | TransportAppointmentStatusEnumeration | 1..1 | Code specifying the status of the confirmed appointment, for example UPDATED. | BRAD TM - TransportPUDOCconfirmation-5 |

4.3. Transport Pick Up Drop Off Consignment

Class Diagram



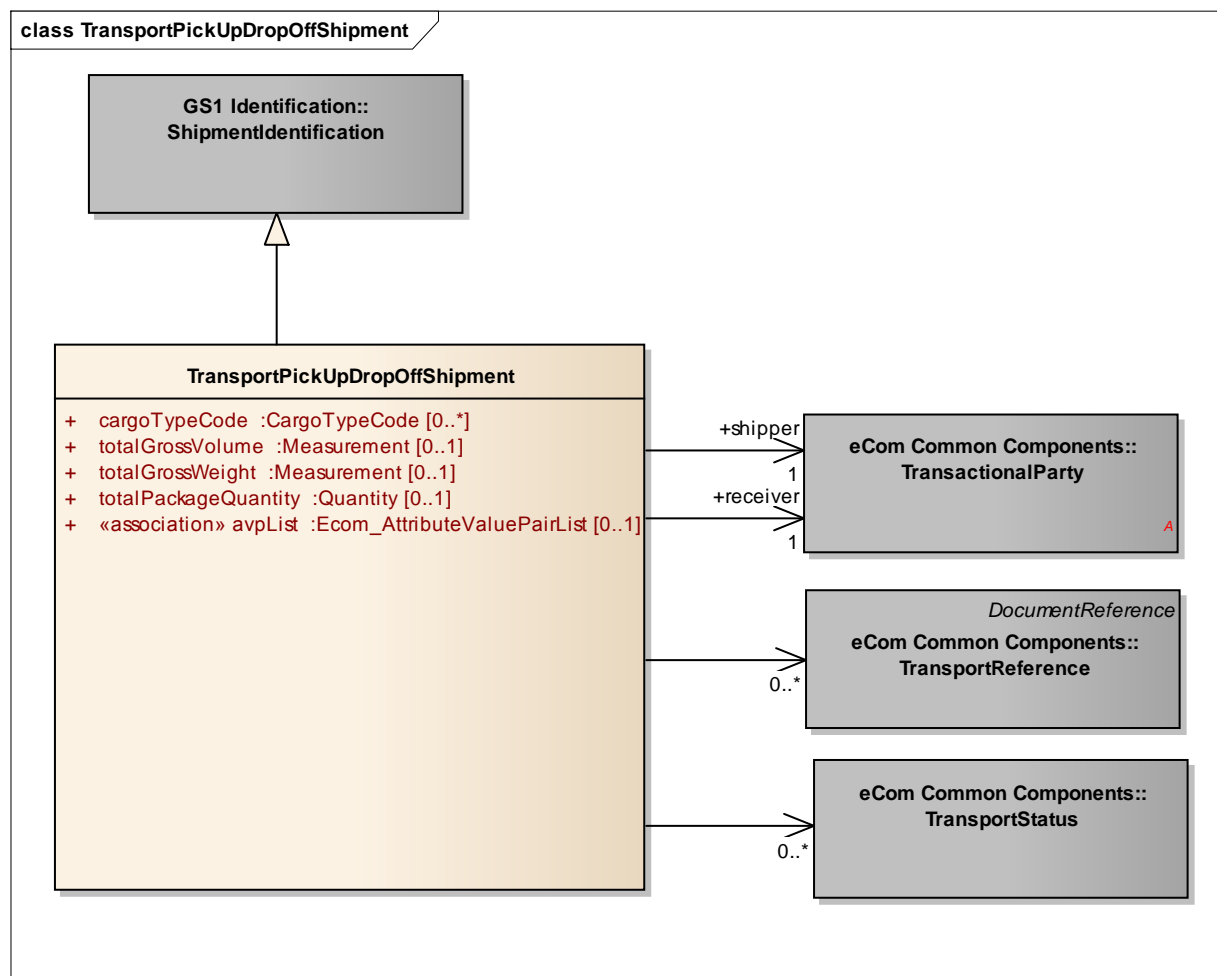
GDD Report

The content of the TransportPickUpDropOffConsignment class, its structure and component definitions can be accessed in the Global Data Dictionary: http://apps.gs1.org/GDD/bms/Version3_2/Pages/bieDetails.aspx?semanticURN=urn:gs1:gdd:bie:TransportPickUpDropOffConsignment

| Content | Attribute / Role | Datatype /Secondary class | Multiplicity | Definition | Requirements |
|-----------------------------------|----------------------|-----------------------------|--------------|--|-----------------------------------|
| TransportPickUpDropOffConsignment | | | | Details on the consignment that will be collected or delivered. | BRAD TM - TransportPUDORRequest-6 |
| Association | | TransportStatus | 0..* | Details on the transport status of the consignment. | |
| Association | consignor | TransactionalParty | 1..1 | The party despatching a consignment of goods. | |
| Association | | TransportReference | 0..* | References to the commercial transaction or to transport or legal documents related to the consignment. | |
| Generalization | | ConsignmentIdentification | | The unique identifier for this consignment. | |
| Association | consignee | TransactionalParty | 1..1 | The party receiving a consignment of goods. | |
| Attribute | cargoTypeCode | CargoTypeCode | 0..* | Code specifying the classification of a type of cargo for example hazardous cargo. | |
| Attribute | totalGrossVolume | Measurement | 0..1 | A measure of the volume, normally calculated by multiplying the maximum length, width, and height of the packaged goods. | |
| Attribute | totalGrossWeight | Measurement | 0..1 | A measure of the mass of the goods including the weight of transport packaging, and potentially the weight of any transport equipment. | |
| Attribute | totalPackageQuantity | Quantity | 0..1 | Total number of logistic units (e.g. pallets) in this transport cargo. | |
| Attribute | avpList | Ecom_AttributeValuePairList | 0..1 | Temporary attributes introduced between minor versions. | |

4.4. Transport Pick Up Drop Off Shipment

Class Diagram



GDD Report

The content of the TransportPickUpDropOffShipment class, its structure and component definitions can be accessed in the Global Data Dictionary: http://apps.gs1.org/GDD/bms/Version3_2/Pages/bieDetails.aspx?semanticURN=urn:gs1:gdd:bie:TransportPickUpDropOffShipment

| Content | Attribute / Role | Datatype /Secondary class | Multiplicity | Definition | Requirements |
|--------------------------------|----------------------|-----------------------------|--------------|--|-----------------------------------|
| TransportPickUpDropOffShipment | | | | Details on the shipment that will be collected or delivered. | BRAD TM - TransportPUDO Request-6 |
| Association | | TransportReference | 0..* | References to the commercial transaction or to transport or legal documents related to the shipment. | |
| Association | | TransportStatus | 0..* | Details on the transport status of the shipment. | |
| Association | shipper | TransactionalParty | 1..1 | A party which engages in shipping this shipment of goods. | |
| Generalization | | ShipmentIdentification | | The unique identifier for this shipment. | |
| Association | receiver | TransactionalParty | 1..1 | A party which engages in receiving this shipment of goods. | |
| Attribute | cargoTypeCode | CargoTypeCode | 0..* | Code specifying the classification of a type of cargo for example hazardous cargo. | |
| Attribute | totalGrossVolume | Measurement | 0..1 | A measure of the volume, normally calculated by multiplying the maximum length, width, and height of the packaged goods. | |
| Attribute | totalGrossWeight | Measurement | 0..1 | A measure of the mass of the goods including the weight of transport packaging, and potentially the weight of any transport equipment. | |
| Attribute | totalPackageQuantity | Quantity | 0..1 | Total number of logistic units (e.g. pallets) in this transport cargo. | |
| Attribute | avpList | Ecom_AttributeValuePairList | 0..1 | Temporary attributes introduced between minor versions. | |



Note: Reference Shared Common Library Business Message (BMS) Release 3.2.0 and eCom Domain Common Library Business Message (BMS) Release 3.2.0 for all common information.

4.5. Code Lists

| Class | Codelist | GDD Link |
|--|---------------------------------------|---|
| TransportPickUpDropOffShipment TransportPickUpDropOffConsignment | CargoTypeCode | http://apps.gs1.org/GDD/Pages/clDetails.aspx?semanticURN=urn:gs1:gdd:cl:CargoTypeCode |
| TransportPickUpDropOffRequest, TransportPickUpDropOffConfirmation | TransportAppointmentTypeEnumeration | http://apps.gs1.org/GDD/Pages/clDetails.aspx?semanticURN=urn:gs1:gdd:cl:TransportAppointmentTypeEnumeration |
| TransportPickUpDropOffConfirmation | TransportAppointmentStatusEnumeration | http://apps.gs1.org/GDD/Pages/clDetails.aspx?semanticURN=urn:gs1:gdd:cl:TransportAppointmentStatusEnumeration |



Note: Refer to the Global Data Dictionary (GDD) for the code values.

5. Business Message Examples

5.1. Example 1

This is an example of the Transport Pick Up Drop Off Request message used as a Pick-Up Request for a Consignment.

Party Information

| GS1 Global Location Number | Party Type |
|----------------------------|----------------|
| 7365566156190 | Slot Provider |
| 4048623000003 | Slot Requestor |
| 7365566156190 | Consignor |
| 7300011234566 | Consignee |

Message Example 1

| Attribute | Value |
|--|---------------------|
| TransportPickUpDropOffRequest | |
| creationDateTime | 2011-01-12T12:00:00 |
| documentStatusCode | ORIGINAL |
| transportAppointmentTypeCode | PICK_UP |
| EntityIdentification (+transportPickUpDropOffRequestIdentification) | |
| uniqueCreatorIdentification | PUDOR00001 |
| TransportPickUpDropOffConsignment | |
| ginc | 7365566156191234567 |
| TransactionalParty (+consignor) | |
| gln | 7365566156190 |

| Attribute | Value |
|---|--------------------------------|
| TransactionalParty (+consignee) | |
| gln | 7300011234566 |
| LogisticEvent (+plannedPickUp) | |
| DateOptionalTime (+logisticEventDateTime) | |
| date | 2009-01-13 |
| time | 09:00:00 |
| TransportMeans | |
| transportMeansType | 31 |
| transportMeansID | TF-69-XX |
| TransportEquipment | |
| transportEquipmentTypeCode | 14 |
| ReturnableAssetIdentification (+individualReturnableAssetIdentification) | |
| grai | 00000000000000 |
| additionalReturnableAssetIdentification; additionalReturnableAssetIdentificationTypeCode | TRL-ABC-912; OWNER_ASSIGNED |
| TransactionalParty (+slotRequestor) | |
| gln | 4048623000003 |
| TransactionalParty (+slotProvider) | |
| gln | 7365566156190 |

5.2. Example 2

This is an example of the Transport Pick Up Drop Off Request message used as a Pick-Up Confirmation for a Consignment.

Message Example 2

| Attribute | Value |
|---|---------------------|
| TransportPickUpDropOffConfirmation | |
| creationDateTime | 2011-01-12T12:00:00 |
| documentStatusCode | ORIGINAL |
| transportAppointmentTypeCode | PICK_UP |
| transportAppointmentStatusCode | CONFIRMED |
| EntityIdentification (+transportPickUpDropOffConfirmationIdentification) | |
| uniqueCreatorIdentification | PUDOC00001 |
| LogisticEvent (+plannedPickUp) | |
| DateOptionalTime (+logisticEventDateTime) | |
| date | 2009-01-13 |
| time | 09:00:00 |
| LogisticLocation | |
| gln | 7365566156190 |
| subLocationIdentification | Dockdoor-23 |
| TransportPickUpDropOffConsignment | |
| ginc | 7365566156191234567 |
| TransactionalParty (+consignor) | |
| gln | 7365566156190 |
| TransactionalParty (+consignee) | |
| gln | 7300011234566 |
| TransactionalParty (+slotRequestor) | |
| gln | 4048623000003 |
| TransactionalParty (+slotProvider) | |
| gln | 7365566156190 |
| DocumentReference (+transportPickUpDropOffRequest) | |
| uniqueCreatorIdentification | PUDOR00001 |

6. Implementation Considerations

6.1. User Guide

The Functional User Guide contains more information about the structure and content of the Transport Pick up Drop off Request and Confirmation message: http://www.gs1.org/docs/ecom/xml/3/3.2/eCom-Trade_messages.html#TransportPickupDropoffRequestandConfirmation

6.2. Message Specific Considerations

Not Applicable

7. Summary of Changes

Any change in the GS1 standards is done based on the Work Request (WR) submitted by the GS1 User Companies or Member Organisations. All Work Requests are documented in the Work Request system available on the GS1 website: <http://wr.gs1.org>. The system is accessible to registered users. New visitors need to register first, to be able to access it. WRs can be searched by the number referenced in tables below, see: Search Work Requests. The number starts with the two last digits of the year when it was submitted, followed by the consecutive number within that year.



Note: WRs submitted earlier than February 2012 should be searched in Old Change Requests.

7.1. BMS Release 3.0

First publication

7.2. BMS Release 3.1

| Change | BSD Version | Associated CR Number |
|--|-------------|----------------------|
| <ul style="list-style-type: none">TransportPickUpDropOffRequest: changed cardinality of association to Consignment from 0..1 to 0..*TransportPickUpDropOffConfirmation: changed cardinality of association to Consignment from 0..1 to 0..* | Draft 1 | WR 12-195 |

7.3. BMS Release 3.2

| Change | Associated WR |
|---|---------------|
| <p>Added Attribute Value Pair at the root, line item and sub line item levels</p> <div> <p>class TransportPickUpDropOffRequest - maintenance view</p> <div> <p>«root» TransportPickUpDropOffRequest</p> <p>+ transportAppointmentTypeCode :TransportAppointmentTypeEnumeration</p> <p><i>maintenance</i></p> <p>Change: (Complete) 3.1 changed cardinality of association to Consignment from 0..1 into 0..* (WR 12-195) Change: (Verified) 3.2 changed generalisation from Document to eComDocument class to include AVP (WR 14-110)</p> </div> </div> <div> <p>class TransportPickUpDropOffConfirmation - maintenance view</p> <div> <p>«root» TransportPickUpDropOffConfirmation</p> <p>+ transportAppointmentTypeCode :TransportAppointmentTypeEnumeration + transportAppointmentStatusCode :TransportAppointmentStatusEnumeration</p> <p><i>maintenance</i></p> <p>Change: (Complete) 3.1 changed cardinality of association to Consignment from 0..1 into 0..* (WR 12-195) Change: (Verified) 3.2 changed generalisation from Document to eComDocument class to include AVP (WR 14-110)</p> </div> </div> <div> <p>class TransportPickUpDropOffConsignment - maintenance view</p> <div> <p>TransportPickUpDropOffConsignment</p> <p>+ cargoTypeCode :CargoTypeCode [0..*] + totalGrossVolume :Measurement [0..1] + totalGrossWeight :Measurement [0..1] + totalPackageQuantity :Quantity [0..1] + «association» avpList :Ecom_AttributeValuePairList [0..1]</p> <p><i>maintenance</i></p> <p>Change: (Verified) 3.2 added +avpList (WR 14-110)</p> </div> </div> <div> <p>class TransportPickUpDropOffShipment - maintenance view</p> <div> <p>TransportPickUpDropOffShipment</p> <p>+ cargoTypeCode :CargoTypeCode [0..*] + totalGrossVolume :Measurement [0..1] + totalGrossWeight :Measurement [0..1] + totalPackageQuantity :Quantity [0..1] + «association» avpList :Ecom_AttributeValuePairList [0..1]</p> <p><i>maintenance</i></p> <p>Change: (Verified) 3.2 added +avpList (WR 14-110)</p> </div> </div> | 14-000110 |

8. Appendices

Not Applicable

9. Acknowledgements

The following is a list of individuals (and their companies) who participated in the creation, review and approval of this BMS.

9.1.1. Work Group

| Function | Name | Company / organisation |
|-------------------|-------------------|-----------------------------------|
| Work Group Chair | Fred Kempkes | Unilever |
| Work Group Chair | Jaco Voorspuij | DHL |
| Work Group Member | Mia Lenman | GS1 Sweden |
| Work Group Member | Richard Chresta | GS1 Switzerland & UNCEFACT TGB3 |
| Work Group Member | Jeff Melcher | Army & Air Force Exchange Service |
| Work Group Member | Yuliya Shevchenko | GS1 Global Office |
| Work Group Member | Roman Strand | GS1 Germany |
| Work Group Member | Henk van Maaren | CETIMA & UNCEFACT TBG3 |
| Work Group Member | Pere Rosell | GS1 Spain |
| Work Group Member | Mats Rosen | DSV Sweden |
| Work Group Member | Helena Lunden | ICA Sweden |
| Work Group Member | Gerald Borgolte | Atos Origin |
| Work Group Member | Audun Vennesland | SINTEF & eFreight |
| Work Group Member | Mary Vayou | BMT Group Ltd & eFreight |

9.1.2. Development Team Members

| Function | Name | Organisation |
|----------------------------|--------------------------|-------------------|
| GSMP Process Lead | Jean-Luc Champion | GS1 Global Office |
| Standards Content Lead | Coen Janssen, Ewa Iwicka | GS1 Global Office |
| Technical Development Lead | Ewa Iwicka | GS1 Global Office |
| Peer Review | Eric Kauz | GS1 Global Office |