

Remove the garbage – Start improving your master data quality today!

Meet the GS1 standards & Master data management in healthcare



Hans Pannekoek – Senior Consultant
Judith de Witte – Sales & Marketing manager



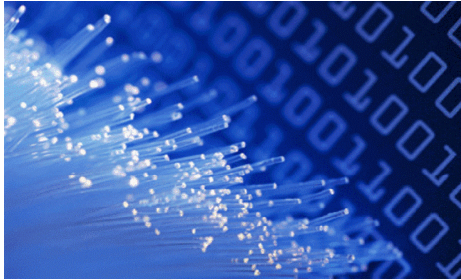
Agenda

- Type 2 Solutions ...clear vision on data
- Remove the garbage?
- Start improving today!
 - Demonstration of the Data Quality Monitor (DQM)
- Result: your data can be trusted



Type 2 Solutions ...clear vision on data

- Focus on data management and data-driven label management systems
- Solutions for optimization, migration and integration of your corporate data
- Enable our clients to get more insight in their most important asset, their data
- Empowering them to adapt more easily to process, market or regulations changes



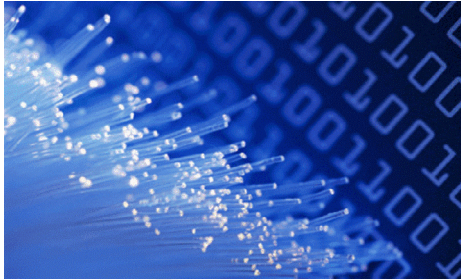
Remove the garbage?

- A recent study conducted by GS1 UK revealed the magnitude of the cost that bad data has for the business

£475m
*The admin shrinkage
over 5 years*

£235m
*5 year cost of
corrections and
manual work
arounds for retailers
and suppliers*

£300m
*Lost sales over next
5 years*



Why data quality?

- Realize the full potential of
 - Your ERP / WMS systems
 - The G-Standaard Logic (GDSN / GS1-DAS / Z-index)
 - Automation and e-collaboration
- Exchange complete, consistent, accurate data
- Reduce costs, adapt more easily to process or market changes, increase productivity and accelerate speed to market
- Achieve patient safety and supply chain efficiency



Start improving today!

- Clearly define data management project team
- Define and measure the data quality
- Set up and execute data quality management action plan
- Exchange complete, consistent, accurate data
- Monitor and maintain master data quality

...with the **Data Quality Monitor (DQM)**



The Data Quality Monitor

- Connects to and accesses your data
 - Standard connectivity to the most common Relational Database Management Systems
- Makes your data quality visible and measurable
 - The platform incorporates a number of standard modules to track down and tackle syntax flaws, such as duplicate records or deviating values
 - External reference sources can be used
- Faults can be mended automatically or manually



GS1 Healthcare demo

- 29,199 records evaluated against required fields for G-Standaard Logic (GDSN / GS1-DAS / Z-index)

 English



You are currently using the DQM environment DQM Demo | GS1 Healthcare

Domains 🔄 📊 Log Out				
Domain	Rules	Penalty	Quality	
 GS1_CODE_CHECKS	3	1	<div style="width: 90%; background-color: orange;">90%</div>	
 WEIGHTS_AND_MEASURES	2	3	<div style="width: 84%; background-color: orange;">84%</div>	
 Z_INDEX_CHECKS	2	1	<div style="width: 96%; background-color: green;">96%</div>	



What is good data quality?

- **Completeness**
 - All the required values are electronically recorded
- **Standards-based**
 - Data conforms to industry standards
- **Consistency**
 - Data values aligned across systems
- **Accuracy**
 - Data values are right, at the right time
- **Time-stamped**
 - Validity timeframe of data is clear



GS1 Healthcare demo






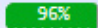


English

You are currently using the DQM environment DQM Demo | GS1 Healthcare

Domains

Log Out

Domain	Rules	Penalty	Quality
 GS1_CODE_CHECKS	3	1	 90%
 WEIGHTS_AND_MEASURES	2	3	 84%
 Z_INDEX_CHECKS	2	1	 96%

- The GS1 Healthcare demo is accessible only through a personal account. Please contact us at info@t2s.nl or call us at +31 (0) 180 545151.
- A free online demo of the Data Quality Monitor is available at www.t2s.nl/dqm



The Data Quality Monitor offers you

- Day-to-day progress tracking, neatly organized by topics
 - You can define as many business specific domains and rules as you wish
- An overview of all identified exceptions, optionally with an explanation of why an entry was tagged as exception
 - Exceptions can be mended manually or automatically via the migration platform
- A historical overview of progress on global, Domain, or Rule level



Result: your data can be trusted!

- Exchange complete, consistent, accurate, and industry standards-based data and realize the full potential of the G-Standaard Logic (GDSN / GS1-DAS)
- Data quality is the key enabler of an efficient supply chain and will contribute to patient safety
- Continuously improving your data quality will reduce costs, increase productivity and accelerate speed to market



Start improving today!

Please contact us and talk to one of our Data Quality Management experts and see how we can help you to start improving your master data today!

- Judith de Witte
Sales & Marketing manager
judith.de.witte@t2s.nl
+31 (0) 6 2126 8961
- Hans Pannekoek
Senior Consultant
hans.pannekoek@t2s.nl
+31 (0) 180 545151

www.t2s.nl

- Data Quality Monitor online demo: www.t2s.nl/dqm

Thank you for your attention

