



HUG Auto-ID Data Work Team

Berlin, 30th January 2007

Mark Walchak, Pfizer & Mark Hoyle, Tyco Healthcare

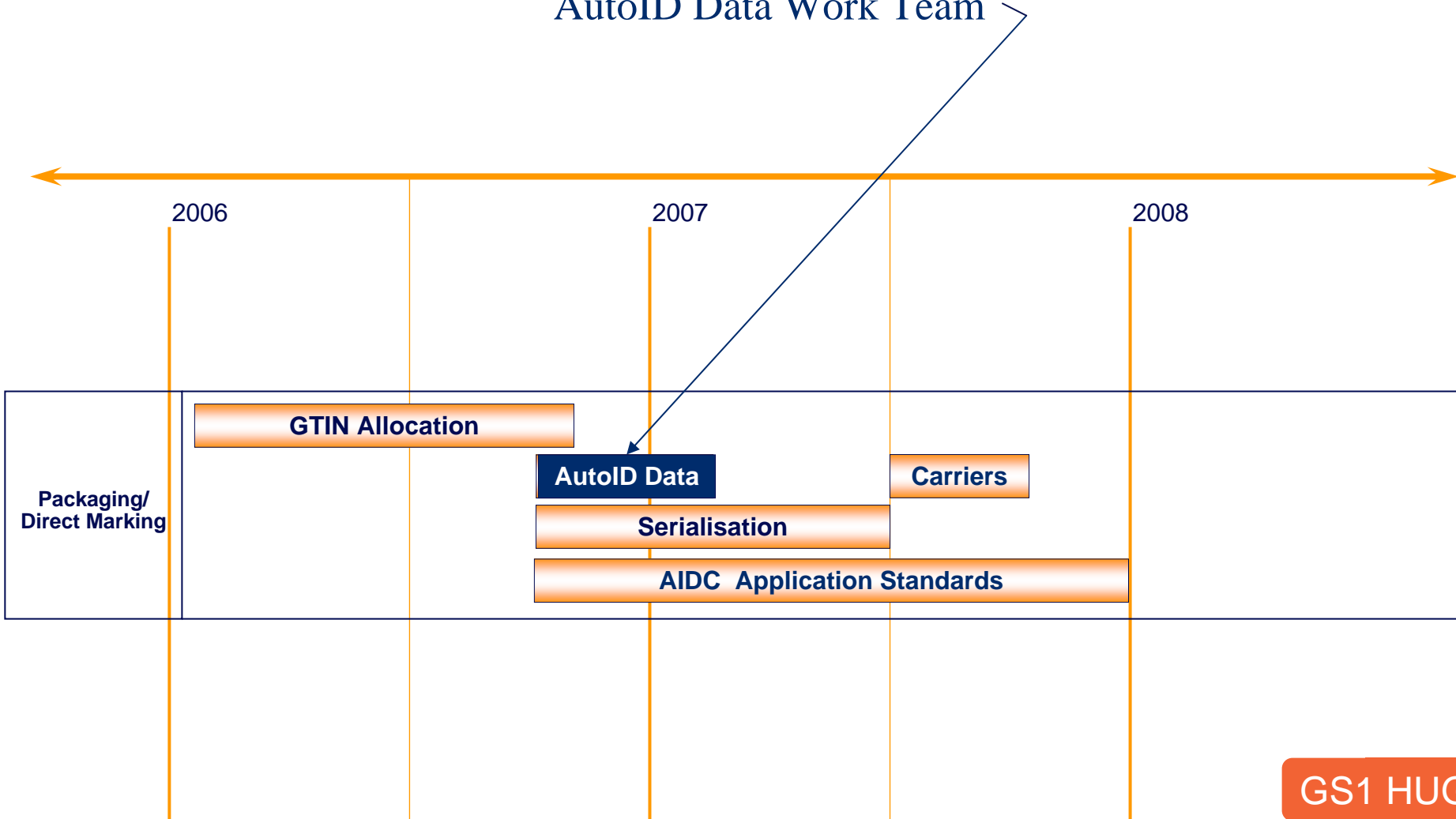
The global language of business

www.gs1.org



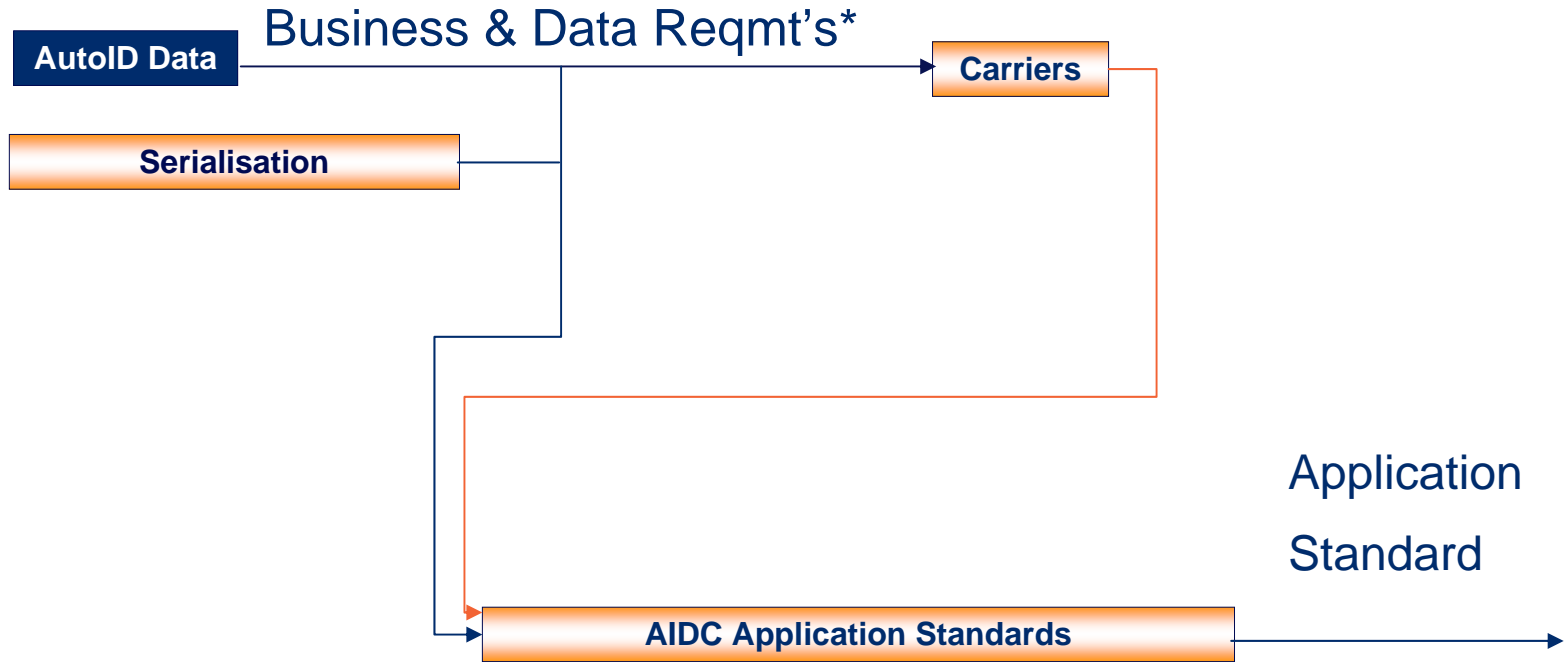
“AIDC Application Standards”

AutoID Data Work Team





AIDC Data Work Team Deliverables



* Final report



Auto-ID Data Work Team Work Team Leaders



Mark Walchak

**Senior Manager of Global
Packaging Technology**

Pfizer



Mark Hoyle

**Global Strategy Development &
Implementation for Product
Identification**

Tyco Healthcare



AIDC Data Work Team Members

- Abbott
- Aexxdis
- Aesculap
- Baxter
- Behring
- B. Braun
- Boston Scientific
- Celesio
- FDA
- Pfizer
- GSG Northern University Hospitals
- Johnson & Johnson
- Medtronic
- Merck Germany
- NHS Chelsea & Westminster
- Novartis
- Procter & Gamble
- Sanofi-Aventis
- St. Jude
- Tyco Healthcare



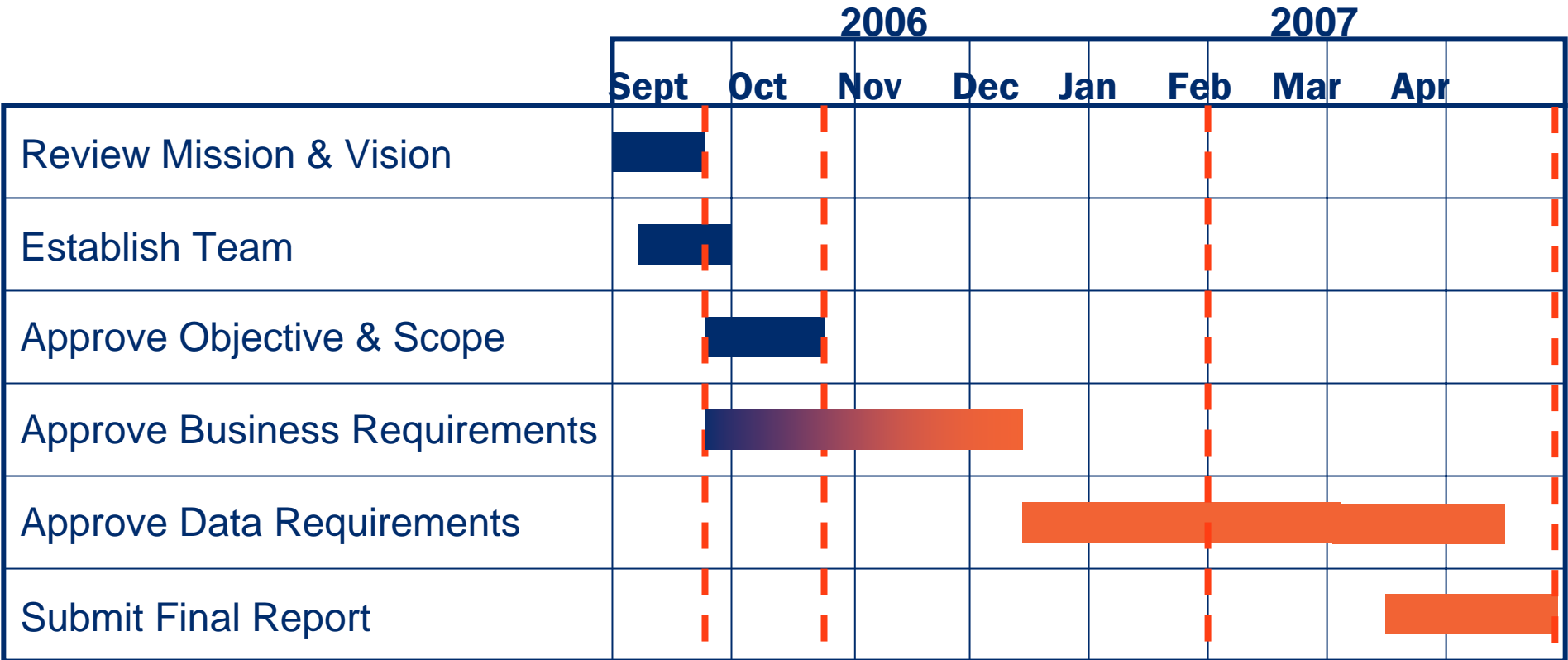
AIDC Data Work Team Members

And GS1 Organizations from:

- Australia
- Austria
- Canada
- China
- France
- Hong Kong
- Hungary
- Italy
- Japan
- New Zealand
- Spain
- Switzerland
- UK
- USA



AIDC Data Work Team Project Plan



key

- - - physical meetings
- task scheduled
- task complete

Paris Philadelphia Berlin



“Because there are no **Global Application Standards for the **Automatic Identification** of data related to **Healthcare**, this team will identify the **Business Requirements** and **Data Requirements** to be used for the development of a global standard for the automatic identification of vaccines, biological, pharmaceuticals, therapeutic nutritional products, medical devices, instruments and implants with the goal of improving patient safety.”**



AIDC Data Work Team's Scope

- The starting point on the supply chain will be at the manufacturer and the point of finished goods, because marking only starts at the point of finishing. Upstream from this point will be out of scope.
- Food services will not be included but therapeutic nutritional products will be included. Note: Therapeutic nutrition is defined as “Therapeutic Nutrition business means enteral and parenteral nutrition of products and services to treat patients who require feeding on that specific route because of a specific disease or to prevent a potential disease.”
- Adverse events related to data capture shall be considered within scope and used as an input to preparing the deliverable.
- Animal healthcare will not be in scope at this time, but input will be considered..
- Equipment used to transport patients is out of scope.
- A facility's assets used by a patient such as tables, lights, etc. is out of scope.



Scope Supply Chain Boundaries



Manufacturing → Distribution → Care Facility



These are the boundaries



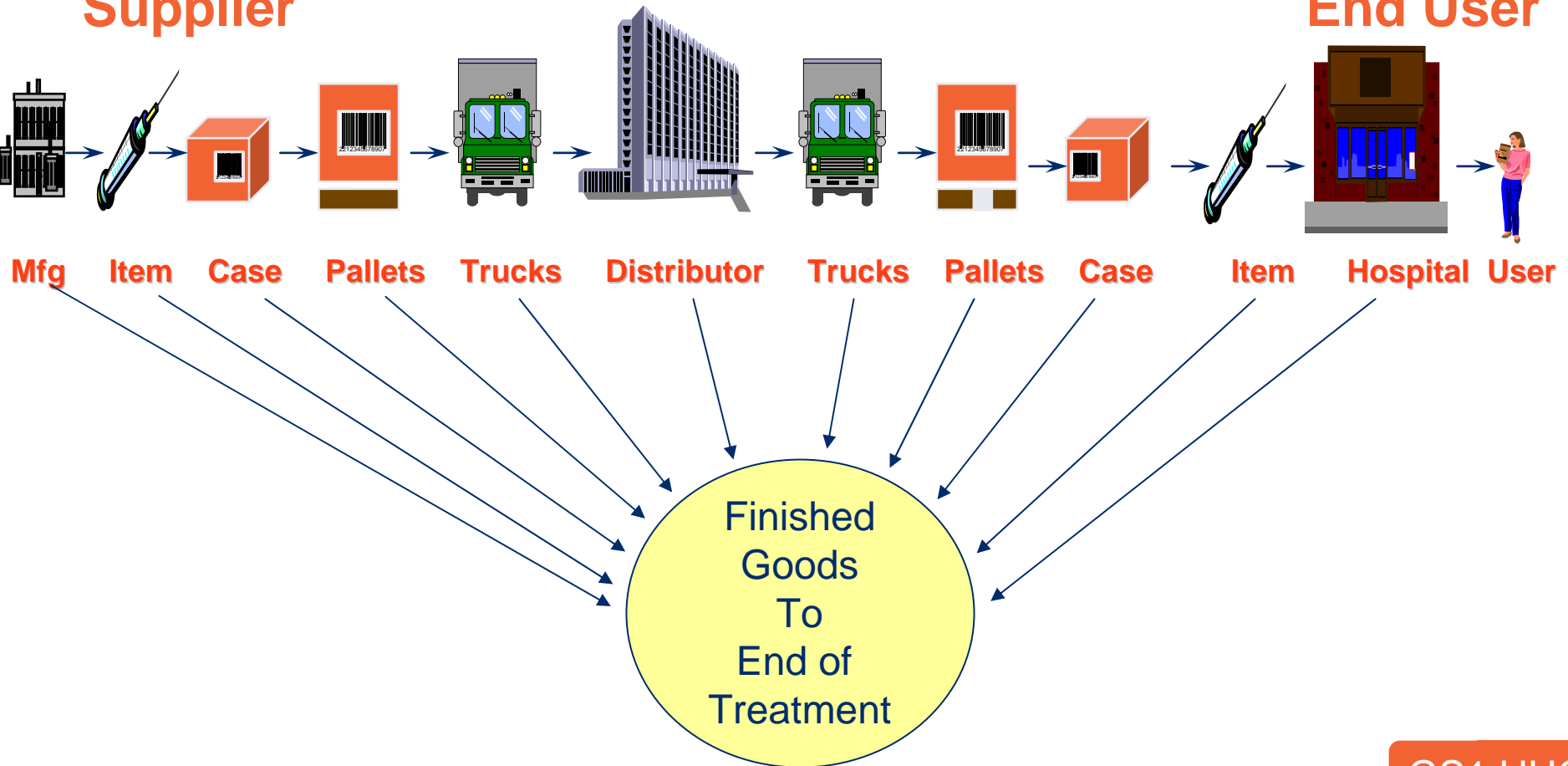
Scope

Supply Chain Illustration – Packaging/Direct Marking

Looking for Common Ground

Supplier

End User





For this task the work team has:

1. Gathered Business Requirements
2. Compiled and Condensed
3. Agree upon Content (team consensus)

Next Steps:

The approved business requirements will be used to establish the DATA requirements.



Contact details

Mark Hoyle, Tyco Healthcare

Mark.Hoyle@emea.tycohealthcare.com

Mark Walchak, Pfizer

Mark.Walchak@pfizer.com

The global language of business

www.gs1.org